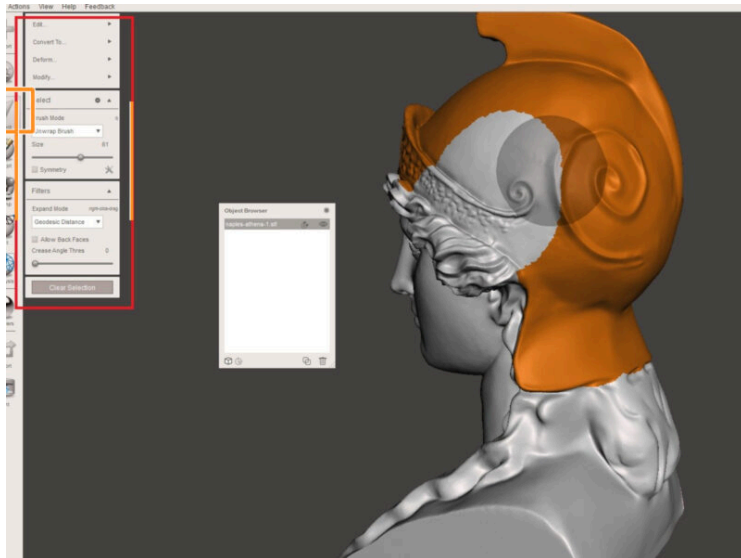


Table of Contents

Splitting STL with single compact part	3
Step 1 - Choose Select tool and paint the area you want to separate.	4
Step 2 - Use Edit -> Separate to separate the shells	5
Step 3 - Hide dark grey body by clicking the eye icon in the Object Browser	5
Step 4 - Click Analysis, Inspector and Auto repair all	6
Step 5 - Close hole on the other object as well	6
Step 6 - You can now export both parts	7
Step 7 - Open files in PrusaSlicer	7

Splitting STL with single compact part

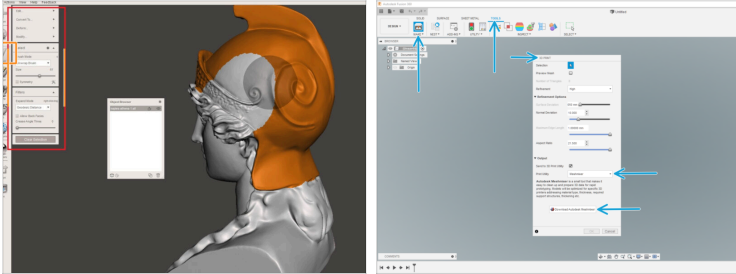


help.prusa3d.com/g106640

Scan the QR code to
display the latest
version of this
chapter.



STEP 1 Choose Select tool and paint the area you want to separate.



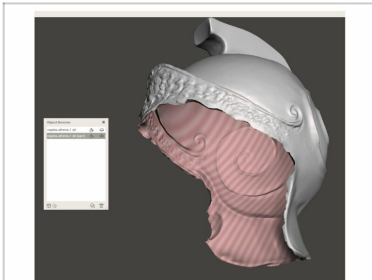
- In our case the helmet. (Note: Do not double click on the model. That would select the whole part)
- ① Software used in this tutorial is Autodesk Meshmixer.
- 📌 You can download Meshmixer at: meshmixer.com/download.html
- If you are using Fusion 360, you can download MeshMixer from there. In DESIGN workspace, visit the TOOLS tab, go to MAKE, 3D Print, select MeshMixer as a Print Utility and hit Download.

STEP 2 Use Edit -> Separate to separate the shells



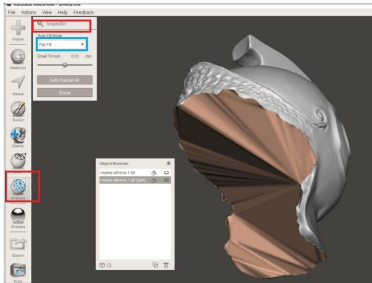
- Y as keyboard shortcut.
- You have now separated the shells, light grey is selected active body(ies), dark grey is unselected body.

STEP 3 Hide dark grey body by clicking the eye icon in the Object Browser



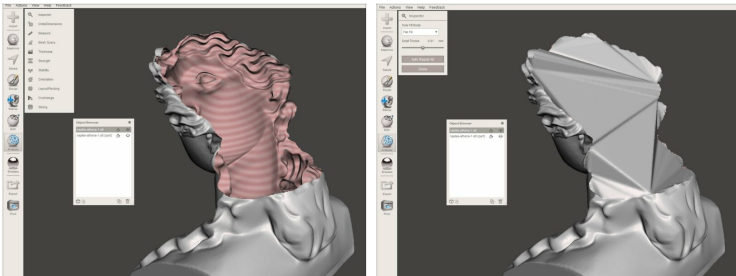
- Pink lines means object is non-manifold and needs to be closed.

STEP 4 Click Analysis, Inspector and Auto repair all



- Meshmixer will try to close the object.
- You can try other types of hole fill mode other than Flat Fill, depending on result.

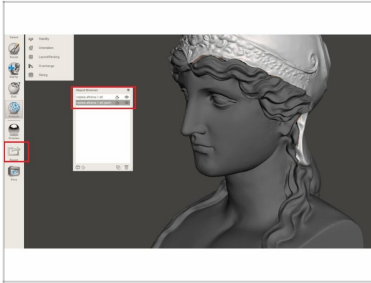
STEP 5 Close hole on the other object as well



- Use the same type or repair for both shells.

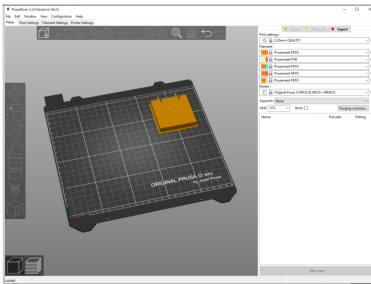
Splitting STL with single compact part

STEP 6 You can now export both parts



- Use binary STL format

STEP 7 Open files in PrusaSlicer



- Continue by opening this model in PrusaSlicer. Please follow this guide: [G-code preparation for MMU2S.](#)
