

Table of Contents

How to replace a Lid safety switch (CW1)	3
Step 1 - Introduction	4
Step 2 - Tools necessary for this guide	5
Step 3 - Removing the lid	5
Step 4 - Removing the top cover	6
Step 5 - Removing the rear cover	7
Step 6 - Removing the top cover	8
Step 7 - Removing the top cover	9
Step 8 - Disconnecting the covercheck assembly	10
Step 9 - Removing the lid safety switch	10
Step 10 - Removing the lid safety switch	11
Step 11 - New lid safety switch - parts preparation	11
Step 12 - Lid safety switch installation	12
Step 13 - Mounting the covercheck assembly	13
Step 14 - Connecting the covercheck cables	14
Step 15 - Mounting the top cover	14
Step 16 - Mounting the rear cover	15
Step 17 - Mounting the rear cover	15
Step 18 - Mounting the front cover	16
Step 19 - Securing the top cover	16
Step 20 - Mounting the lid	17
Step 21 - It's done!	17

How to replace a Lid safety switch (CW1)



help.prusa3d.com/g158527

Scan the QR code to
display the latest
version of this
chapter.



STEP 1 Introduction



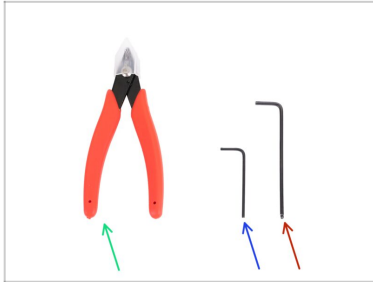
i This guide will take you through the replacement of the **Lid safety switch** on the **Original Prusa CW1**.

◆ All necessary parts are available in our shop
shop.prusa3d.com

i Note that you have to be logged in to have access to the spare parts section.

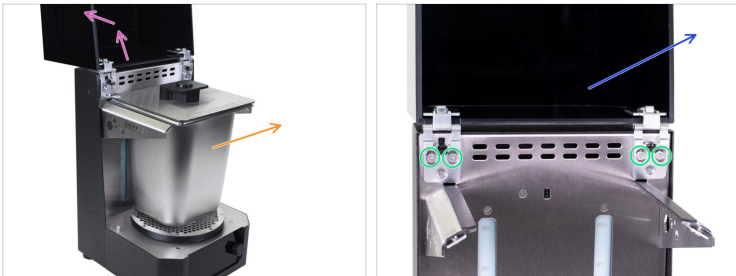
⚠ **WARNING:** This device utilizes UV light, which can harm your eyesight or skin. Do not turn the device ON until it is fully reassembled with all the covers installed!!!

STEP 2 Tools necessary for this guide



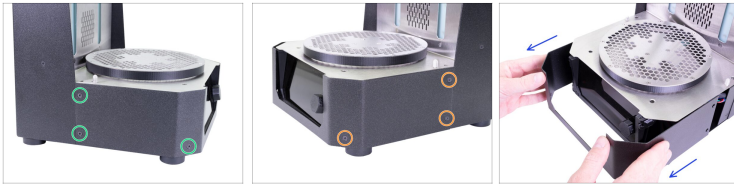
- ◆ Pliers for zip ties
- ◆ 2.0mm Allen key
- ◆ 2.5mm Allen key


STEP 3 Removing the lid







- ◆ Open the lid, all the way to the back.
 - ◆ Remove gastro pan from the CW1.
 - ◆ Release four screws on both hinges.
 - ◆ Carefully remove the lid with hinges.
- ⚠ **Manipulate with the lid carefully, it can be easily scratched.**

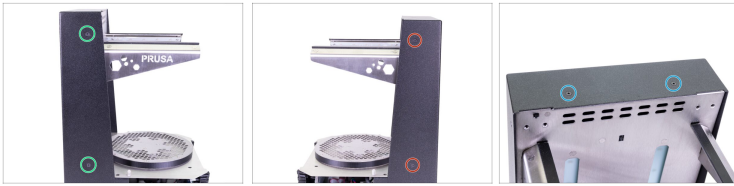
STEP 4 Removing the top cover









 **Proceed carefully with these screws, preferably use an Allen key with straight sharp edges, there is a risk of stripping the screw's head.**

-  Turn the left side of the CW1 towards you.
-  Locate, release, and remove three screws.
-  Turn the CW1 to the other side (180 °) and again remove three screws.
-  Remove the front cover from the CW1.

STEP 5 Removing the rear cover



 **Proceed carefully with these screws, preferably use an Allen key with straight sharp edges, there is a risk of stripping the screw's head.**

-  Turn the left side of the CW1 towards you.
-  Release and remove two screws on the side.
-  Turn the right side of the CW1 towards you.
-  Release and remove two screws on the side.
-  Release and remove two screws on the top of the rear cover.

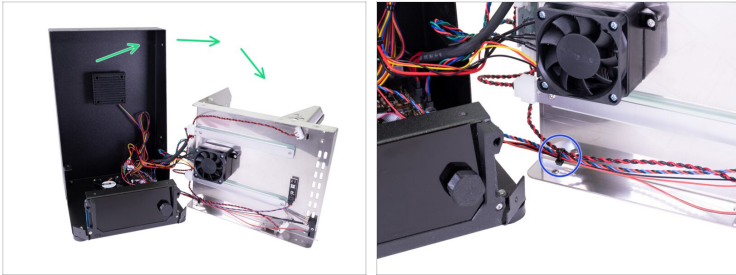
STEP 6 Removing the top cover






Be extra careful!!! The steel parts on the machine have sharp edges. **Avoid cutting yourself!**

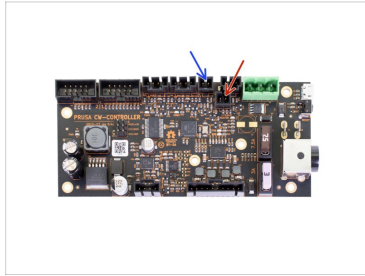
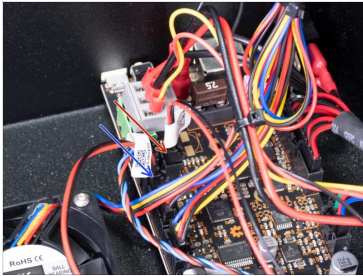
- ◆ Release and remove four screws on the top cover.
- ◆ Carefully grab both gastro pan holders and slightly push them down and out. The stainless steel sheet bends slightly - that's alright.
- ◆ As soon as the steel sheet with the holders pops out, grab one holder with your hand and use the other hand to grab the sheet near the rotating the platform. Then carefully remove this assembly out. **Be careful, there are cables attached to it!!!**

STEP 7 Removing the top cover



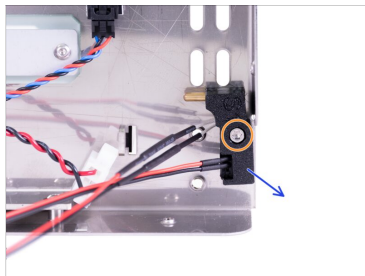
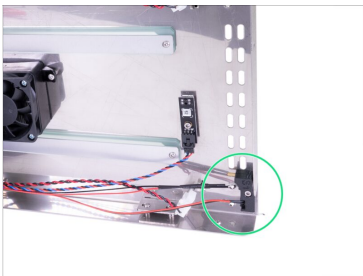
-  **Be extra careful!!!** The steel parts on the machine have sharp edges. **Avoid cutting yourself!**
-  Carefully remove the top part from the machine and put it next to the CW1 so that the filtration fan is facing you, like in the picture. **Do not pull the cables!!!**
-  Cut the zip tie on the cables from the covercheck assembly, LEDs and IR-sensor. **Be careful, avoid cutting cables!!!**

STEP 8 Disconnecting the covercheck assembly



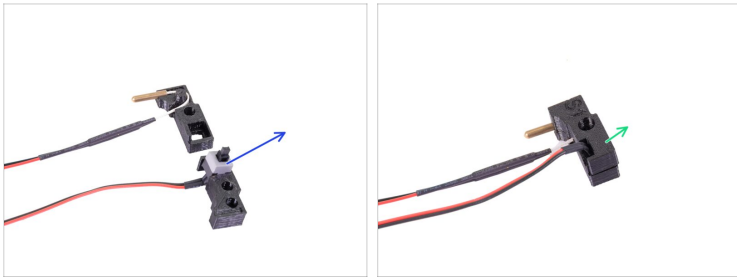
- ◆ Disconnect the lid safety switch (red & black) cable from the Prusa CW-Controller.
- ◆ Disconnect the thermistor (red & black) cable from the Prusa CW-Controller.

STEP 9 Removing the lid safety switch



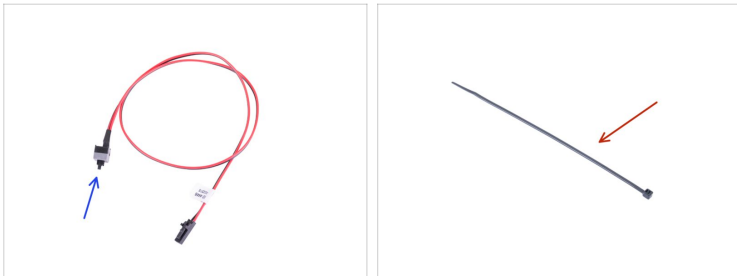
- ◆ Locate the lid safety switch on the inside of the top cover.
- ◆ Release the screw on the lid safety switch.
- ◆ Remove the lid safety switch from the top cover.

STEP 10 Removing the lid safety switch



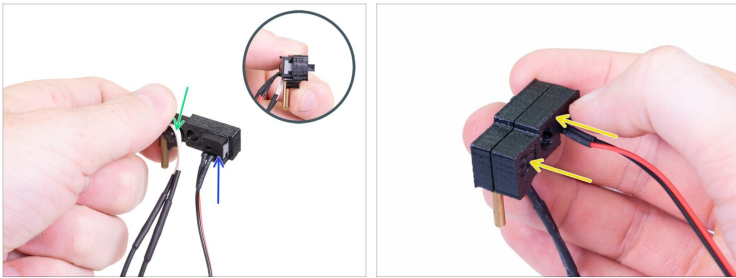
- ◆ Remove the covercheck-bottom part from the covercheck-top.
- ◆ Remove the lid safety switch.
- ⓘ Keep the printed parts and the thermistor for the upcoming steps.

STEP 11 New lid safety switch - parts preparation



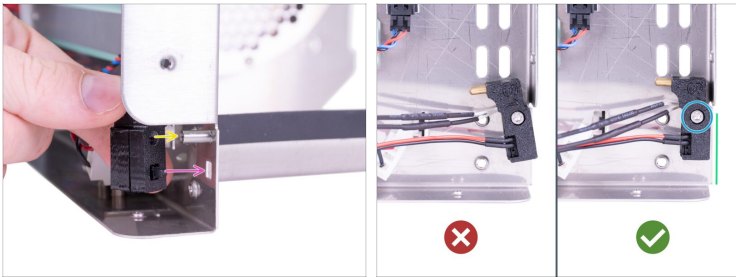
- ◆ **For the following steps, please prepare:**
- ◆ New lid safety switch (1x)
- ◆ Zip tie (1x)

STEP 12 Lid safety switch installation



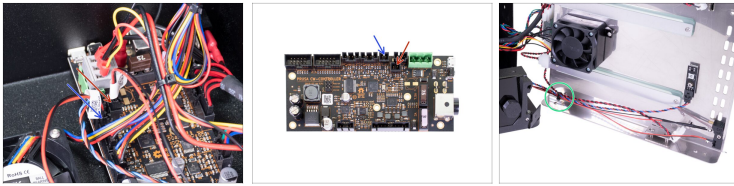
- ◆ Insert the lid safety switch in the covercheck-top part from the same side as the thermistor. In other words, both sensors will have cables on the same side of the printed part.
- ◆ Make sure that the thermistor did not fall out of the covercheck-top.
- ◆ Finish the assembly using the covercheck-bottom part. **Ensure no wire is pinched or bent!!!**

STEP 13 Mounting the covercheck assembly



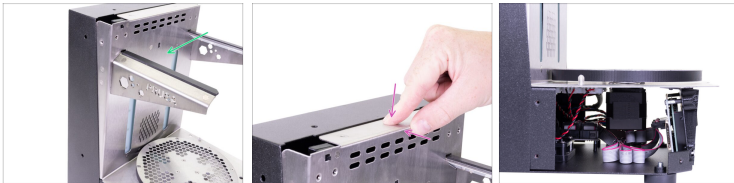
- ◆ To properly mount the covercheck assembly to the top cover, follow these instructions:
 - ◆ The circular hole in the printed parts must fit on the "extension" nut welded to the sheet.
 - ◆ The button of the switch has to go through the hole.
- ◆ Align the assembly with the edge of the cover.
- ◆ Secure the covercheck assembly using the M3x5 screw.

STEP 14 Connecting the covercheck cables



- ◆ Connect the thermistor cable to the Prusa CW-Controller.
- ◆ Connect the lid safety switch cable to the Prusa CW-Controller.
- ◆ Put the lid safety switch, thermistor, LED power cable and IR-sensor cables together and secure them with the zip tie. **Do not overtighten the zip tie! You may damage the cables.**

STEP 15 Mounting the top cover



- ⚠ **Be extra careful!!!** The steel parts on the machine have sharp edges. **Avoid cutting yourself!**
- ◆ Put the cover back in the CW1.
- ◆ Squeeze the edges of the cover slightly to get under the rear cover.
- ⚠ **Make sure no cables are pinched under the cover and make sure the cables do not interfere with the lower fan.**

STEP 16 Mounting the rear cover



- Align both screw holes on the top of the rear cover with the holes in the stainless steel cover.
- Insert two M3x5b countersunk screws into the holes and tighten it.

STEP 17 Mounting the rear cover



- Turn the left side of the CW1 towards you.
- Secure the rear cover with two M3x5b countersunk screws.
- Turn the right side of the CW1 towards you.
- Secure the rear cover with two M3x5b countersunk screws.

STEP 18 Mounting the front cover



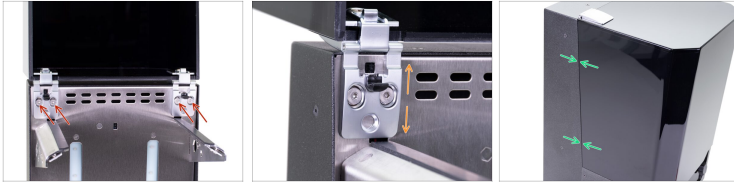
- ◆ Carefully place the front cover on the CW1.
- ◆ Turn the left side of the CW1 towards you.
- ◆ Secure the cover with three M3x5b countersunk screws.
- ◆ Turn the right side of the CW1 towards you.
- ◆ Secure the cover with three M3x5b countersunk screws.

STEP 19 Securing the top cover



- ◆ Align all four holes in both parts.
- ◆ Secure the top cover with four M4x8b countersunk screws.

STEP 20 Mounting the lid



- ◆ Mount the lid with hinges back to the CW1 and slightly tighten the screws.
- ◆ Adjust the screws in the oval holes to the same position on both hinges. Tighten the screws.
- ◆ Close the lid and check on the sides that it fits correctly on the rear cover along its entire length. If necessary, adjust the position of the hinges.

STEP 21 It's done!



- ◆ **Great job!** You've just changed the lid safety switch on the CW1 machine.
