

# Table of Contents

<b>How to replace a display (CW1)</b> .....	3
Step 1 - Introduction .....	4
Step 2 - Tools necessary for this guide .....	5
Step 3 - Removing the lid .....	5
Step 4 - Removing the top cover .....	6
Step 5 - Removing the rear cover .....	7
Step 6 - Removing the top cover .....	8
Step 7 - Removing the top cover .....	9
Step 8 - Disconnecting the LCD cables .....	9
Step 9 - Removing the display .....	10
Step 10 - Removing the display .....	10
Step 11 - New display: parts preparation .....	11
Step 12 - Mounting the new display .....	11
Step 13 - Connecting the new LCD cables .....	12
Step 14 - Assembling the LCD knob .....	13
Step 15 - Mounting the top cover .....	13
Step 16 - Mounting the rear cover .....	14
Step 17 - Mounting the rear cover .....	14
Step 18 - Mounting the front cover .....	15
Step 19 - Securing the top cover .....	15
Step 20 - Mounting the lid .....	16
Step 21 - It's done! .....	16



# How to replace a display (CW1)



[help.prusa3d.com/g216620](https://help.prusa3d.com/g216620)

Scan the QR code to  
display the latest  
version of this  
chapter.



## STEP 1 Introduction



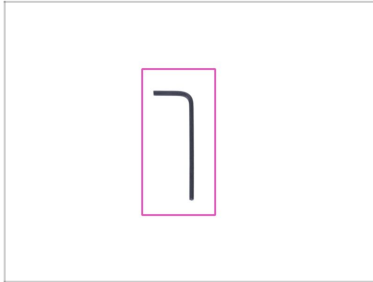
**i** This guide will take you through the replacement of the **display** on the **Original Prusa CW1**.

◆ All necessary parts are available in our shop [shop.prusa3d.com](http://shop.prusa3d.com)

**i** Note that you have to be logged in to have access to the spare parts section.

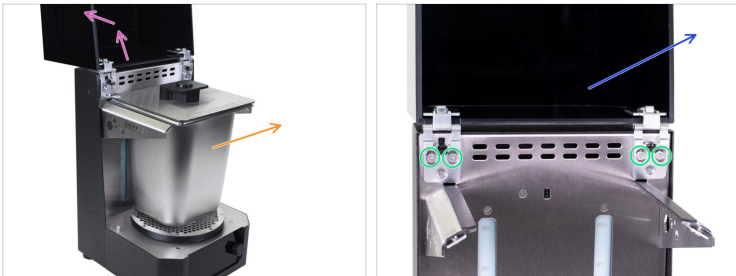
**!** **WARNING:** This device utilizes UV light, which can harm your eyesight or skin. Do not turn the device ON until it is fully reassembled with all the covers installed!!!

## STEP 2 Tools necessary for this guide



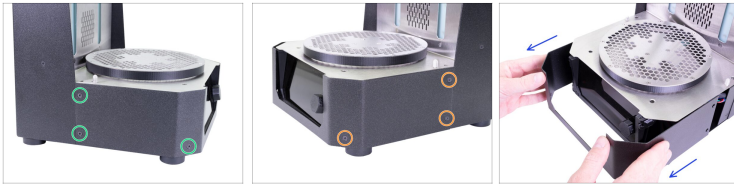
- For the following steps, please prepare:
- ◆ 2.0mm Allen key

## STEP 3 Removing the lid



- Turn the CW1 off and unplug it from the external PSU.
- ◆ Open the lid all the way to the back.
- ◆ Remove gastro pan from the CW1.
- ◆ Release four screws on both hinges.
- ◆ Carefully remove the lid with hinges.
- ⚠ **Manipulate with the lid carefully. It can be easily scratched.**

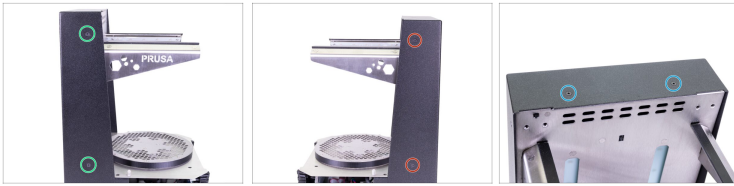
## STEP 4 Removing the top cover









**⚠** Proceed carefully with these screws, preferably use an Allen key with straight sharp edges. There is a risk of stripping the screw's head.

- Turn the left side of the CW1 towards you.
- Locate, release, and remove three screws.
- Turn the CW1 to the other side (180 °) and again remove three screws.
- Remove the front cover from the CW1.

## STEP 5 Removing the rear cover



 **Proceed carefully with these screws, preferably use an Allen key with straight sharp edges, there is a risk of stripping the screw's head.**

-  Turn the left side of the CW1 towards you.
-  Release and remove two screws on the side.
-  Turn the right side of the CW1 towards you.
-  Release and remove two screws on the side.
-  Release and remove two screws on the top of the rear cover.

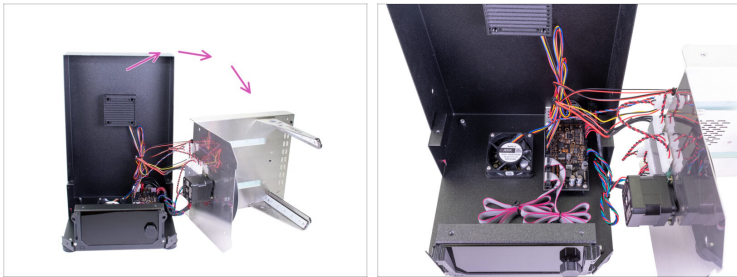
## STEP 6 Removing the top cover



**Be extra careful!!!** The steel parts on the machine have sharp edges. **Avoid cutting yourself!**

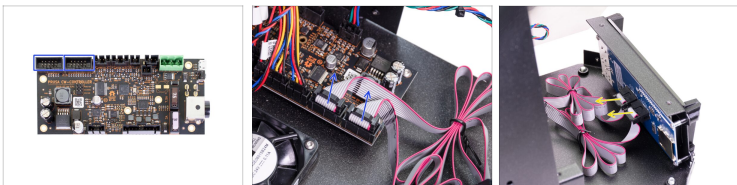
- ◆ Release and remove four screws on the top cover.
- ◆ Carefully grab both gastro pan holders and slightly push them down and out. The stainless steel sheet bends slightly - that's alright.
- ◆ As soon as the steel sheet with the holders pops out, grab one holder with your hand and use the other hand to grab the sheet near the rotating the platform. Then carefully remove this assembly out. **Be careful, there are cables attached to it!!!**

## STEP 7 Removing the top cover



- ⚠ **Be extra careful!!!** The steel parts on the machine have sharp edges. **Avoid cutting yourself!**
- 🟡 Carefully remove the top part from the machine and put it next to the CW1. **Do not pull the cables!!!**

## STEP 8 Disconnecting the LCD cables



- 🟡 Remove both LCD cables from the slots on the electronics board.
- 🟡 Remove both LCD cables from the slots on the display board. And remove the cables from the printer.

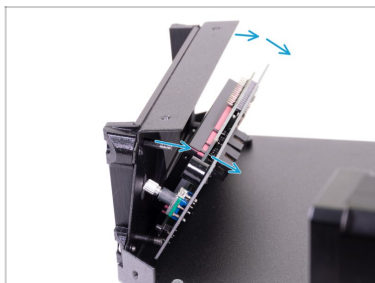
## STEP 9 Removing the display



- ◆ Pull out the LCD knob from the display.
- ◆ Look from the back of the display. Locate two screws on the right side of the display board and remove them using the 2.0mm Allen key.
- ◆ Remove two screws from the left side of the board.

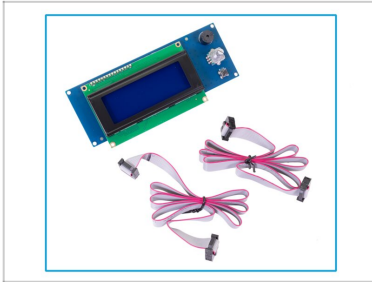
---

## STEP 10 Removing the display



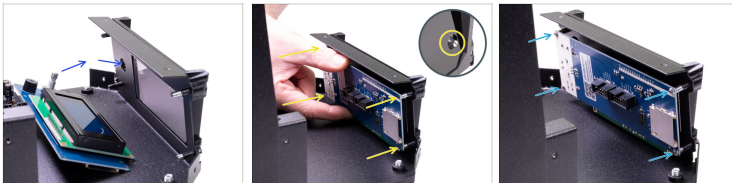
- ◆ The display may be glued on self-adhesive tape on the plexiglass. Gently remove the display from the front cover by tilting it.

## STEP 11 New display: parts preparation



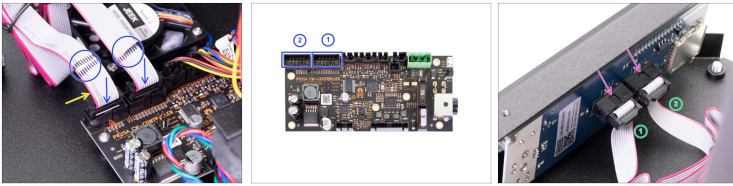
- ◆ **For the following steps, please prepare:**
- ◆ New CW1 display (1x) *package includes two LCD cables*
- ⓘ Make sure you have prepared the new LCD cables. Put the old cables away so that they are not confused.







## STEP 12 Mounting the new display



- ◆ Place the display into the device like in the picture. Make sure the encoder is on the same side as the hole in the front cover.
- ◆ Place the display on the front cover. Make sure the encoder is going through the hole. And align four screw holes on the display board against four columns on the front cover.
- ◆ Secure the display with four M3x8r screws.

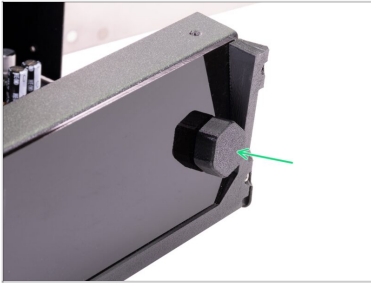
## STEP 13 Connecting the new LCD cables



-  The LCD cables are marked with one and two stripes. Carefully read the instructions for the correct connection.
-  Connect the cable with two stripes to the first slot from the left on the electronics board. And the cable with one stripe to the right slot.
  -  Make sure the pink wire on each cable is on the left side.
  -  Make sure the "tooth" on each connector fits into the notch in the slot.
  -  Connect the LCD cable with one stripe to the left slot on the display board. And the cable with two stripes to the right slot.
  -  Ensure that both cables are plugged all the way into the slots.

---

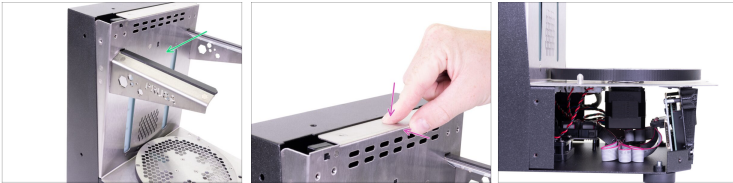
## STEP 14 Assembling the LCD knob



- Assemble the LCD-knob part as shown in the picture.

---

## STEP 15 Mounting the top cover



- ⚠ Be extra careful!!!** The steel parts on the machine have sharp edges. **Avoid cutting yourself!**
- Put the cover back in the CW1.
- Squeeze the edges of the cover slightly to get under the rear cover.
- ⚠ Make sure no cables are pinched under the cover** and make sure the cables do not interfere with the lower fan.

## STEP 16 Mounting the rear cover



- Align both screw holes on the top of the rear cover with the holes in the stainless steel cover.
- Insert two M3x5b countersunk screws into the holes and tighten it.

## STEP 17 Mounting the rear cover



- Turn the left side of the CW1 towards you.
- Secure the rear cover with two M3x5b countersunk screws.
- Turn the right side of the CW1 towards you.
- Secure the rear cover with two M3x5b countersunk screws.

---

## STEP 18 Mounting the front cover



- ◆ Carefully place the front cover on the CW1.
- ◆ Turn the left side of the CW1 towards you.
- ◆ Secure the cover with three M3x5b countersunk screws.
- ◆ Turn the right side of the CW1 towards you.
- ◆ Secure the cover with three M3x5b countersunk screws.

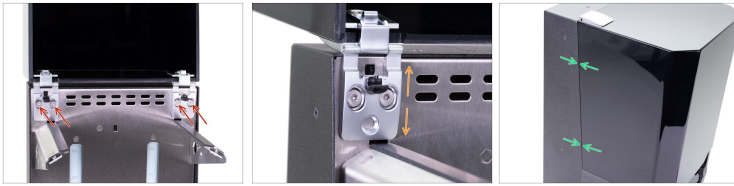
---

## STEP 19 Securing the top cover



- ◆ Align all four holes in both parts.
- ◆ Secure the top cover with four M4x8b countersunk screws.

## STEP 20 Mounting the lid



- ◆ Mount the lid with hinges back to the CW1 and slightly tighten the screws.
- ◆ Adjust the screws in the oval holes to the same position on both hinges. Tighten the screws.
- ◆ Close the lid and check on the sides that it fits correctly on the rear cover along its entire length. If necessary, adjust the position of the hinges.

---

## STEP 21 It's done!



- ◆ **Good job. It's done!**
- ◆ Now try to wash and cure some print ;)



---

---

---

---

---

---

---

---

---

---



---

---

---

---

---

---

---

---

---

---



---

---

---

---

---

---

---

---

---

---



---

---

---

---

---

---

---

---

---

---