

Table of Contents

How to replace the print display (SL1S)	3
Step 1 - Introduction	4
Step 2 - Tools necessary for this chapter	5
Step 3 - Preparing the printer	5
Step 4 - Removing the cover	6
Step 5 - Disconnecting the print display	7
Step 6 - Removing the print display	8
Step 7 - Print display installation: parts preparation	8
Step 8 - New print display - parts preparation	9
Step 9 - Connecting the print display	10
Step 10 - Checking the print display cable	11
Step 11 - Connecting the power button	11
Step 12 - Assembling the cover	12
Step 13 - Checking the display functionality	13
Step 14 - Calibrating the print platform	14
Step 15 - It's done!	14

How to replace the print display (SL1S)



help.prusa3d.com/g235687

Scan the QR code to
display the latest
version of this
chapter.

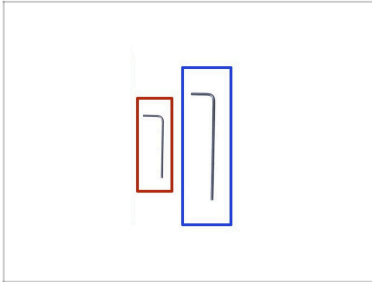


STEP 1 Introduction



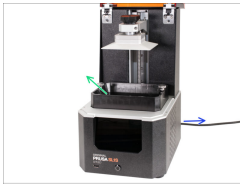
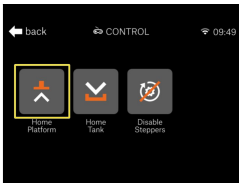
- i** This guide will take you through the replacement of the **print display** on your **Original Prusa SL1S SPEED**.
- ◆** Monochromatic print display for SL1S is available in our eshop shop.prusa3d.com
- i** Note that you have to be logged in to have access to the spare parts section.
- i** The SL1S SPEED print display is not directly compatible with the older SL1 printer without upgrading the printer first.
- ◆** The **SL1S SPEED print display is not compatible with the SL1 printer**. For replacement of the SL1 print display, please follow this guide: How to replace the print display (SL1)
- ⚠** **WARNING:** This device utilizes UV light, which can harm your eyesight or skin. Do not turn the device ON until it is fully reassembled with all the covers installed!!!

STEP 2 Tools necessary for this chapter




- For this guide, please prepare:
- 2.0mm Allen key
 - 2.5mm Allen key

STEP 3 Preparing the printer



Before you start, do the following:

- Move the cantilever with the print platform up (Menu -> Control -> Home platform). *You will need more space in the following steps.*
- Remove the resin tank. If you have a resin inside, pour it back into the bottle and clean the tank.
- Turn the printer off and unplug it.
- Use ESD gloves (recommended).

 ESD gloves are anti-static (prevents damage to the electronics).

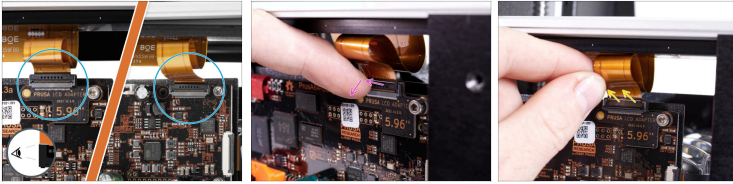
STEP 4 Removing the cover



⚠ Proceed carefully with these screws, preferably use an Allen key with straight sharp edges, there is a risk of stripping the screw's head.

- Turn the left side of the printer towards you.
- Locate, release and remove the four screws.
- Turn the printer by 180° and remove the last four screws on the other side.
- Slide the cover just a few cm/inches out.
- **(i)** **There are two designs of USB and power button:**
 - **NEW DESIGN:** The USB and the power button share the same connector. Disconnect the cable and remove the cover completely.
 - **OLD DESIGN:** The USB and the power button are separate. Disconnect the power button cable from the extension cable and remove the cover completely.

STEP 5 Disconnecting the print display



- ◆ Look at the printer from the left and locate the LCD cable connector on the electronics board.
- ⓘ Note that **there are two variants of the LCD cable connector position**. However, the procedure remains the same.
- ◆ There is a safety latch on the LCD connector. Using your nail, gently flip out the safety latch. Note that it is not removable.
- ◆ Carefully remove the LCD cable from the connector.

STEP 6 Removing the print display



- ◆ Using the 2.5mm Allen key remove all 4 screws holding the display assembly. Proceed carefully as you might strip the screw.
- ⓘ Keep all the removed screws for a later use.
- ◆ Using your index finger from below on the left side, push the display assembly up.
- ◆ Remove the display assembly.

STEP 7 Print display installation: parts preparation







- ◆ **For the following steps, please prepare:**
- ◆ New SL1S print display (1x)

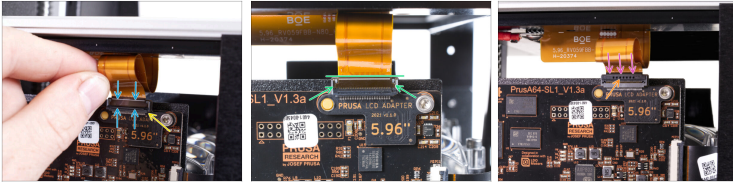
STEP 8 New print display - parts preparation








Keep the orange protective sticker on the other side of the print display for now!

-  **Make sure the cable from the display is not bent or pinched** before you tighten up the screws. The cable can be damaged easily by improper handling. Keep an eye on it.
-  **Carefully insert the display assembly into the printer**, as seen in the picture. Make sure the cable is **ON THE LEFT** side under the black tilt frame and moving freely.
-  Carefully align the display with the tilt frame underneath. Use the M4x14b countersunk screws to fix it back in position.
-  Now, tighten all 4 screws gradually in a cross-pattern using a reasonable force.

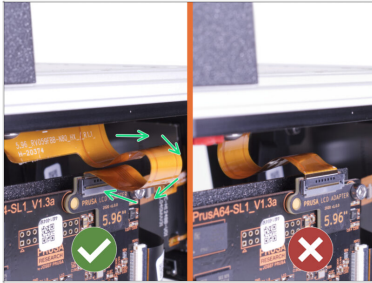
STEP 9 Connecting the print display



WARNING: screen cables and connectors are fragile. Please proceed with extra caution.

-  Make sure the safety latch is still open.
-  Carefully insert the display cable into the connector. The white line on the cable must be aligned parallel to the connector.
-  Align the cable into the connector so that the "tooth" on each side of the cable fits into the shaped slot.
-  Close the safety latch using your finger.
-  Verify that the white line on the display cable is slightly above the safety latch, and it's parallel to the connector body.

STEP 10 Checking the print display cable



⚠ Make sure the bow on the display cable is inclined towards the electronics board side, not the display side.

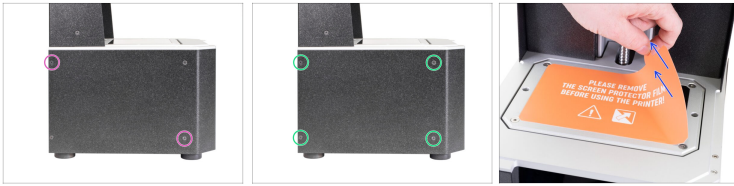
STEP 11 Connecting the power button



⚠ Avoid pinching cables!

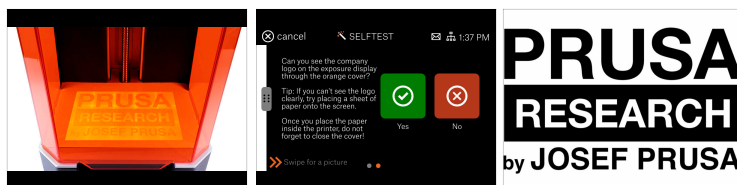
- Slide the cover halfway onto the printer. We need to connect the front USB and power button first.
- **NEW DESIGN:** Look from above at the front cover and connect the USB & Power cable. Make sure the safety pin "clicks in".
- **OLD DESIGN:** Connect the power cable button into the extension cable. Make sure the safety pin "clicks in".

STEP 12 Assembling the cover



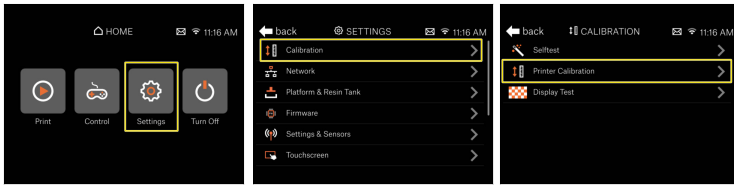
- ◆ Slide the cover onto the printer and secure it on one side using two M3x5b countersunk screws. Don't tighten them firmly yet. Move to the other side and repeat the procedure.
- ◆ As soon as the cover is aligned and partly secured, add the remaining screws and tighten them all on both sides.
- ◆ Remove the protective film from the print display.

STEP 13 Checking the display functionality



- Plug in the printer and turn it ON.
- On the touchscreen navigate to *Menu -> Settings -> Calibration -> Display test* and follow the instructions on the display.
- ⚠ **Don't open the lid under any circumstances, keep it closed!** There is a UV light inside, which will cause damage to your eyes.
- Look from the front side into the printer. Your eye level needs to be slightly above. Otherwise, you won't be able to judge the result correctly.
- Check the entire screen, you must be able to see the details of our company logo across the whole screen. No parts (letters) should be missing.
- ⓘ **Tip:** If you can't see the logo clearly, try placing a sheet of paper onto the screen. We recommend format A5 with a density 80g/m².
- ⚠ **Don't forget to CLOSE THE COVER after inserting the sheet!**

STEP 14 Calibrating the print platform



⚠ After replacing the print display, the height values of the new part may change slightly. Therefore, **calibrate the print platform.**

- 🟡 On the touch screen navigate to *Home* -> *Settings* -> *Calibration* -> *Printer calibration* and follow the instructions on the screen.

STEP 15 It's done!



- 🟡 **You have just successfully replaced the print display on your SL1S SPEED printer.**
- 🟡 **Now fill the resin tank and test it out ;)**
