

Table of Contents

How to install the Nextruder V6 Nozzle Adapter (CORE One)	3
Step 1 - Introduction	4
Step 2 - Printer Preparation (Part 1)	5
Step 3 - Printer Preparation (Part 2)	5
Step 4 - Top Cover Removal	6
Step 5 - Tools necessary for this chapter	6
Step 6 - Heatbed Protection	7
Step 7 - Nextruder Uncovering	7
Step 8 - Cables Disconnecting	8
Step 9 - Hotend Assembly Removal	8
Step 10 - Prusa Nozzle Removal	9
Step 11 - V6 Adapter: Parts Preparation	9
Step 12 - V6 Adapter Installation	10
Step 13 - Hotend Insertion	11
Step 14 - Hotend Cables Guidance	12
Step 15 - Cables Connection	12
Step 16 - Nextruder Cover	13
Step 17 - Top Cover	14
Step 18 - Turning the Printer On	14
Step 19 - Nozzle Hot Tightening	15
Step 20 - Hotend tightening	16
Step 21 - Nozzle Set Up	17
Step 22 - Final check	18

How to install the Nextruder V6 Nozzle Adapter (CORE One)

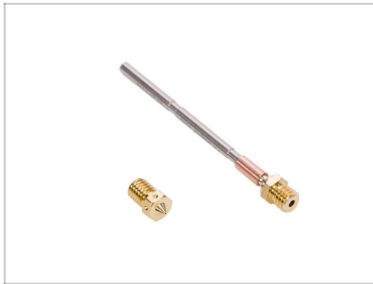


help.prusa3d.com/g252348

Scan the QR code to
display the latest
version of this
chapter.



STEP 1 Introduction



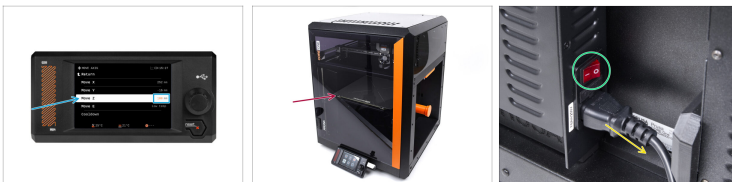
- ◆ This guide will take you through the installation of the **Nextruder V6 Nozzle Adapter** on the Prusa CORE One.
- ⓘ The following instructions are compatible with all Prusa Nozzle diameters.
- ◆ All necessary parts are available in our eshop prusa3d.com.
- 📌 Note that you have to be logged in to have access to the spare parts section.

One)
STEP 2 Printer Preparation (Part 1)



- ◆ Close the printer's door.
- ◆ Unload the filament. Visit the menu **Filament** and select **Unload filament**.
- ◆ Unload the filament from the printer.
- ◆ Remove the filament spool from the printer.
- ⚠ Ensure the printer has completely cooled down.

STEP 3 Printer Preparation (Part 2)



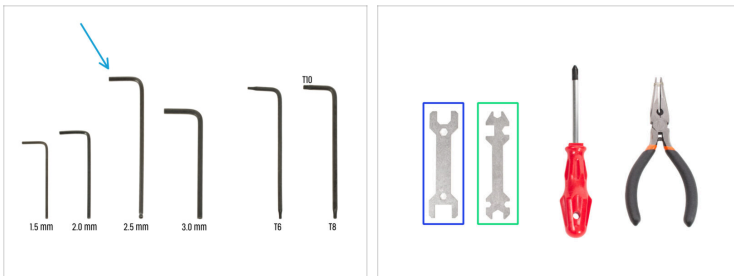
- ◆ Open the menu **Control > Move Axis > Move Z** and set it to 100mm or more.
- ◆ Wait until the heatbed moves down.
- ◆ Turn the printer off using the switch on the back.
- ◆ Disconnect the printer from power.

STEP 4 Top Cover Removal ^{One)}



- 🟡 Open the printer. From the inside, reach for the nylon rivet on the front right of the top cover. Push it out to unlock it.
- 🟠 Then, remove the rivet from the outside.
- 🟢 Remove the remaining nylon rivets on the top cover using the same technique.
- 🟠 Remove the top cover.

STEP 5 Tools necessary for this chapter



- 🟠 **Please prepare tools for this chapter:**
 - 🟠 2.5mm Allen key
 - 🟠 Wrench 13-16
 - 🟢 Universal wrench

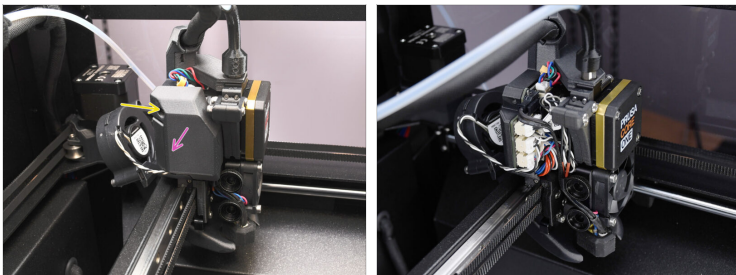
STEP 6 Heatbed Protection



⚠ Before proceeding any further, it is recommended to protect the heatbed first!

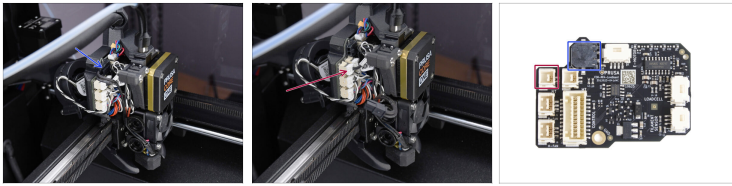
- Use a piece of fabric or other material thick enough to cover the heatbed. This will ensure you won't damage (scratch) the surface during the process.


STEP 7 Nextruder Uncovering





- Let's move onto the left side of the Nextruder.
- Using the 2.5mm Allen key, remove the M3x10 screw holding the side cover.
- Remove the cover.

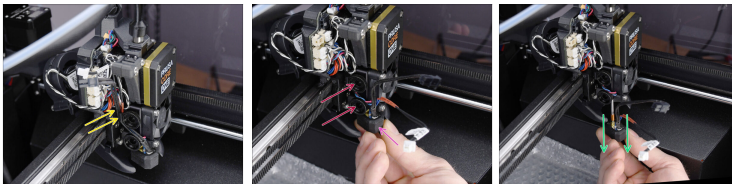
STEP 8 Cables Disconnecting^{One)}








 Each connector has a safety latch. **It is necessary to press the latch before disconnecting.** Otherwise, the connector may get damaged.

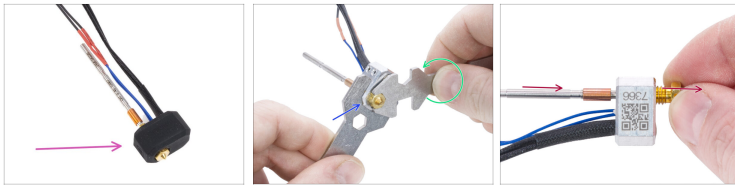
-  Disconnect the hotend heater cable.
-  Disconnect the hotend thermistor cable.

STEP 9 Hotend Assembly Removal



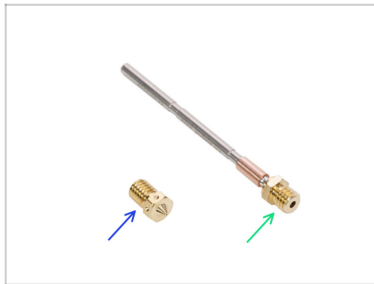
-  Remove the hotend cables from the cable channel.
-  Grasp the hotend with your hand.
-  Use your other hand to loosen the two thumb screws. **There is no need to remove them completely**, a few turns are enough.
-  Watch out, the hotend assembly may fall out!
-  Slide out the hotend assembly from the heatsink.

STEP 10 Prusa Nozzle Removal ^{One)}



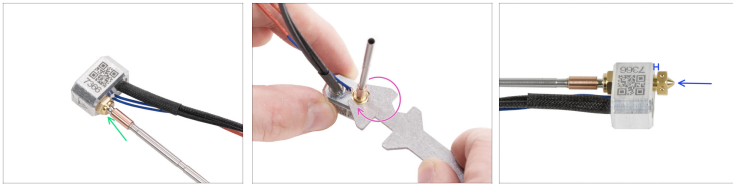
- Remove the silicone sock from the heater block.
- Use the 13-16 wrench to hold the heater block securely.
- Use the 7mm cutout in the universal wrench to grasp and loosen the nozzle.
- Manually unscrew and remove the Prusa nozzle from the hotend assembly.

STEP 11 V6 Adapter: Parts Preparation



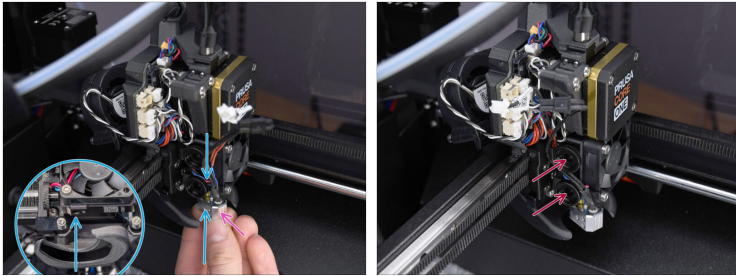
- For the following steps, please prepare:**
- Nextruder V6 Nozzle Adapter (1x)
- V6 Nozzle (1x)
- i** See the Different Nozzle Types article for more info on the available options.

STEP 12 V6 Adapter Installation ^{One)}



- ◆ From the side with the cables, screw the Nextruder V6 Nozzle Adapter onto the heater block.
- ◆ Hold the heater block in your hand and tighten the Nextruder V6 Nozzle Adapter using the universal nozzle wrench.
- ◆ From the opposite side of the heater block, screw in the V6 nozzle. Tighten it gently but firmly.
- ⓘ A gap of approximately 2 millimeters between the nozzle and the heater block is normal and correct.

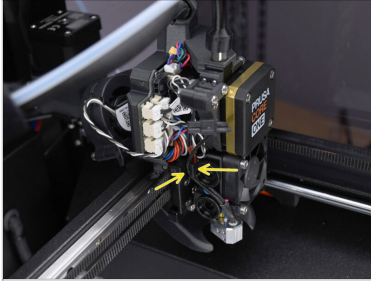
STEP 13 Hotend Insertion



- Locate the corresponding opening on the bottom of the extruder heatsink and fully insert the hotend into the heatsink.
- At the same time, keep the hotend cables pointing to the front, at a slight angle.
- ⓘ Ensure that there is enough free space between the new hotend assembly and the fan shroud.
- Slightly tighten the thumb screws just so that the hotend doesn't fall out. We will tighten it fully later on.

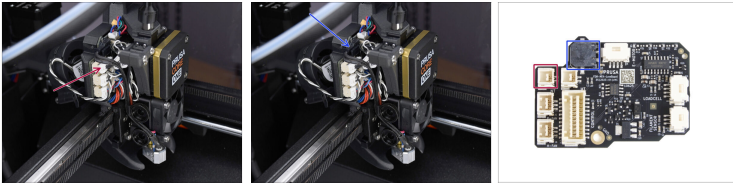
How to install the Nextrunder V6 Nozzle Adapter (CORE One)

STEP 14 Hotend Cables Guidance



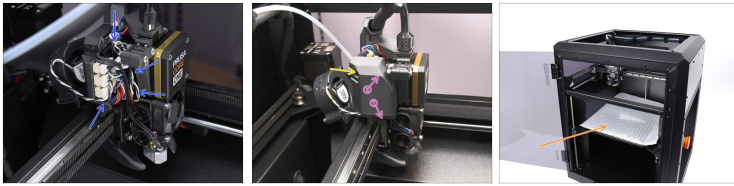
- Locate the cable channel behind the thumb screws. Guide the thermistor cable through the channel first. Then insert the hotend heater cable.

STEP 15 Cables Connection



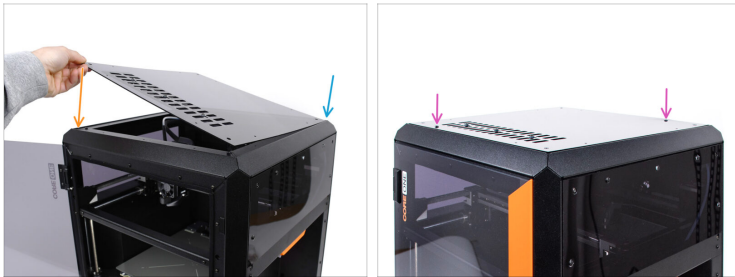
- Connect the hotend thermistor to the top left slot on the LoveBoard.
- Connect the hotend heater to the black slot on the upper part of the LoveBoard.

STEP 16 Nextruder Cover



- ◆ Organize the cables to ensure they do not protrude.
- ◆ Attach the cover to the left side of the Nextruder assembly.
 - ◆ Hook it at the bottom first.
 - ◆ Push it towards the Nextruder.
- ◆ Fix the cover in place using the M3x10 screw.
- ◆ Remove the protective material from the heatbed.

STEP 17 Top Cover



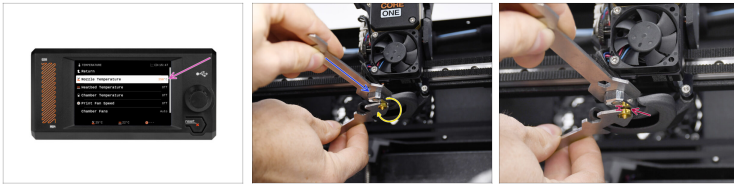
- Now, we can reinstall the top cover.
- Align the cover with the metal frame in the far-right corner.
- Align the cover with the recess in the front part as well
- Secure the cover in place using two nylon rivets in the marked openings.

STEP 18 Turning the Printer On



- Close the door.
- Connect the printer to electricity.
- Turn the printer on.

STEP 19 Nozzle Hot Tightening ^{One)}



- ⚠ In the following steps, we will need to heat up the nozzle. **Avoid touching the HOT parts on the hotend.**
- 🟡 Set the nozzle temperature to 250°C. On the printer screen, navigate to **Control -> Temperature -> Nozzle Temperature** and set it to 250°C.
- 🟢 Grasp the heaterblock with the wrench 13-16. Avoid pulling on the hotend!
- 🟠 Tighten the nozzle using the universal wrench. **Do not overtighten, as it may damage the thread.** Apply sufficient force; the recommended tightening torque is 1.5 Nm.
- ⚠ **NOTE: Avoid bending the hotend assembly while tightening!** After that, there will be a gap of approximately 1 mm between the nozzle and the heater block.

STEP 20 Hotend tightening ^{One)}









⚠ CAUTION!!! COOLDOWN THE PRINTER before proceeding with this step. Wait until the hot parts are cooled down to ambient temperature. It takes approximately 10 minutes.

- Push the hotend assembly all the way into the heatsink.
- While pushing the hotend assembly in, firmly tighten both thumb screws. **Avoid pinching any cable between the screws and the heatsink!**
- Make sure the V6 adapter is fully inserted into the heatsink. The copper ring on the steel tube shouldn't be visible.
- There should be approximately a 2 mm gap between the heatsink and the brass part of the nozzle.
- You may now reinstall the Silicone sock.

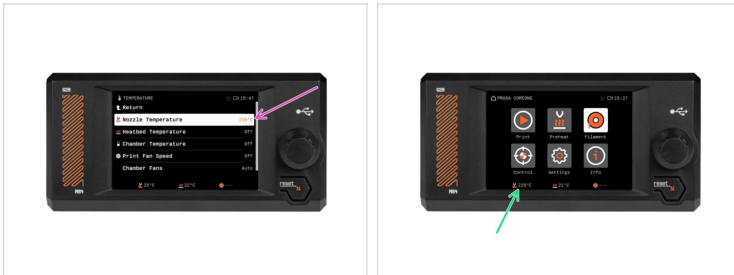
STEP 21 Nozzle Set Up



 This step is important only if you changed your nozzle diameter or type.

-  Visit the **Settings > Hardware > Printhead** menu
-  Select the **Nozzle diameter** you are using (e.g. 0.25 / 0.3 / 0.4 / 0.5 / 0.6 / 0.8)
-  On CORE One, the 0.40 mm nozzle is the stock size.
-  Turn on the **Silicone sock** option if you are using one.
-  Select a nozzle type.

STEP 22 Final check



- ◆ To verify everything works correctly, navigate to **Control > Temperature > Nozzle Temperature** and set it to above 200°C.
- ◆ Return to the main screen and check the bottom bar to ensure the temperature is rising as expected.



Great job! You can now resume using your printer.
