

Table of Contents

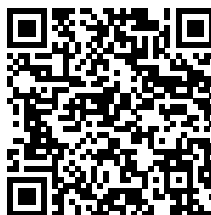
How to replace a UV LED fan (SL1S)	3
Step 1 - Introduction	4
Step 2 - Tools necessary for this chapter	5
Step 3 - Preparing the printer	6
Step 4 - Securing the printer	7
Step 5 - Removing the UV LED fan	8
Step 6 - Removing the UV LED fan	8
Step 7 - New UV LED fan: parts preparation	9
Step 8 - Assembling the UV LED fan	9
Step 9 - Mounting the UV LED fan	10
Step 10 - Testing the proper functionality	11
Step 11 - That's all	11

How to replace a UV LED fan (SL1S)



help.prusa3d.com/g304052

Scan the QR code to
display the latest
version of this
chapter.



STEP 1 Introduction



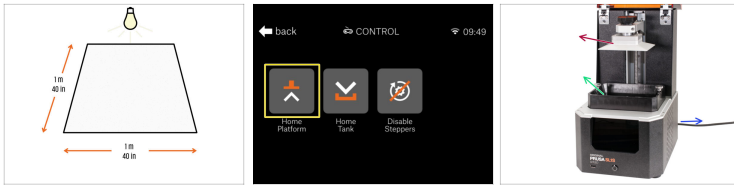
- ◆ This guide will take you through the replacement of the **UV LED fan** on the **Original Prusa SL1S SPEED**.
- ◆ All necessary parts are available in our shop shop.prusa3d.com
- ⓘ Note that you have to be logged in to have access to the spare parts section.
- ⚠ **WARNING:** This device utilizes UV light, which can harm your eyesight or skin. Do not turn the device ON until it is fully reassembled with all the covers installed!!!


STEP 2 Tools necessary for this chapter




- **For this guide, please prepare:**
- 2.0mm Allen key
- Cardboard or similar soft pad (e.g. a piece of cloth)
- ⓘ Owners of the SL1 kit version can use the cardboard pad that came in the kit.
- Small bowl or box for storing fasteners. Some fasteners are very small and can be lost.





STEP 3 Preparing the printer




 For a better handling, it is recommended to **prepare a clean workbench** with a space of at least 1 m x 1 m (40 in x 40 in).

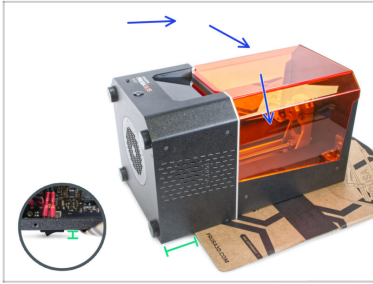
 We're recommending a **bright light above your workbench**. Some parts inside the printer are dark and inadequate light could make a very difficult procedure.

 **Before you start, do the following:**

-  Move the cantilever with the print platform up (Menu -> Control -> Home platform). You will need more space in the following steps.
-  Remove the resin tank. If you have a resin inside, pour it back into the bottle and clean the tank.
-  Remove the print platform
-  Turn the printer off and unplug it.

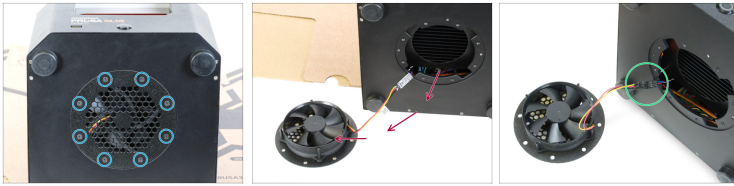
 **All the removed screws will be reused. Do not throw away any screw!** In the instructions, it is graphically showing which type of screw to prepare.

STEP 4 Securing the printer



- Place the cardboard or other soft pad on your workbench.
- **VERY CAREFULLY** lay the printer on the soft pad by its back.
- Make sure there is a gap between the PSU power button and the surface beneath it. **Avoid laying the printer directly on the button.**

STEP 5 Removing the UV LED fan



- ◆ Release all eight screws on the bottom of the printer. Store these screws
- ⚠ **Keep the screws safely in a bowl or box. You will need them later on.**
- ◆ Carefully remove the UV LED fan from the printer. Put it next to the printer. **No need to disconnect the fan cable.**
- ◆ Disconnect the UV LED fan cable from the extension cable.

STEP 6 Removing the UV LED fan



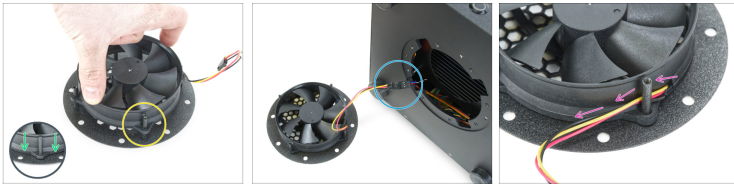
- ◆ Push out the UV LED fan from the columns on the ventilator cover.

STEP 7 New UV LED fan: parts preparation



- For the following steps, please prepare:
- New UV LED fan (1x)

STEP 8 Assembling the UV LED fan



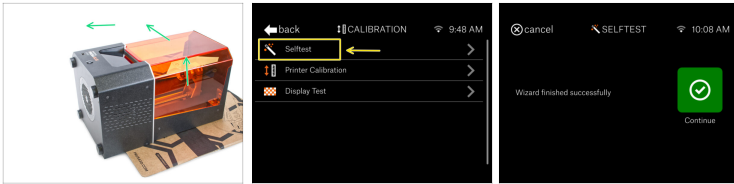
- There are four columns on the ventilator holder. Align the four holes on the fan casing with the columns.
- Push the UV LED fan on the columns and slide the fan all the way down.
- Connect the UV LED fan cable with the extension cable.
- Guide the fan cable behind the nearest column, like in the picture.

STEP 9 Mounting the UV LED fan



- ◆ Gather as much UV LED cable as possible on the left side of the printer. Push the cable as far as the edge of the opening.
- ◆ Close the UV LED fan. Avoid pinch the UV LED fan cable!
- ◆ Make sure you do not pinch the cable by making sure that the cover is flush with the surface of the printer.
- ◆ Align the holes after closing the UV LED fan.
- ◆ Secure the UV LED fan by tightening eight M3x5b countersunk screws, that you removed earlier.

STEP 10 Testing the proper functionality



- Now you can carefully put the printer back on its feet.
- Plug the printer and turn it ON.
- On the touch screen navigate to Home -> Settings -> Calibration -> Selftest.
- Run the Selftest and follow the instructions on the screen.
- The Selftest takes only a few minutes and will need user interaction. If no error message is displayed during the Selftest, everything is OK.

STEP 11 That's all



- Congratulation!** The UV LED fan is successfully replaced on your SL1S SPEED printer. So, *happy printing!*
