

Tabla de Contenido

How to set up a Buddy3D Cam	3
Paso 1 - Introduction	4
Paso 2 - XL: parts preparation	5
Paso 3 - CoreXY & frame holder preparation	5
Paso 4 - Frame clip preparation	6
Paso 5 - Frame holder securing	6
Paso 6 - Buddy cam securing	7
Paso 7 - XL & ENC: parts preparation	7
Paso 8 - Frame holder securing	8
Paso 9 - Buddy cam securing	9

How to set up a Buddy3D Cam

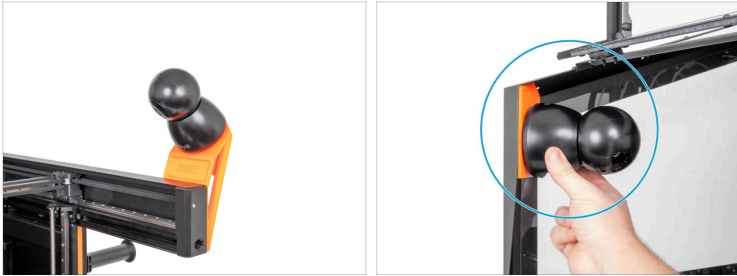


help.prusa3d.com/g385023

Escanea el código
QR para ver la última
versión de este
capítulo.



PASO 1 Introduction



- ◆ This guide will take you through the installation of the **Buddy3D camera mount** on your **Original Prusa XL**.
- ⚠ **Before starting, ensure you have printed all the necessary parts.**
- ⓘ The printed parts can be found on [Printables.com](https://www.printables.com).
- ◆ If you are installing the camera in an Enclosure, proceed to the **XL & ENC: parts preparation**

PASO 2 XL: parts preparation



● **Para esta guía, prepara:**

- Fixing-card (1x)
- M3x10 screw (3x)
- Frame-clip (2x)
- XL-Cam-holder (1x)
- XL-frame-holder (1x)

PASO 3 CoreXY & frame holder preparation



- Attach the XL-cam-holder to the XL-frame-holder and secure it with one M3x10 screw using a 2.5 mm Allen key. **Do not overtighten the screw!**
- Using a T10 Torx screwdriver, remove the M3x8bT from the frame. **Don't throw the screw away!**

PASO 4 Frame clip preparation



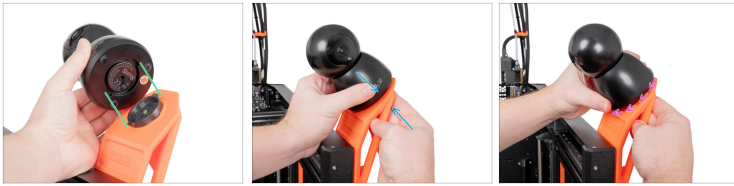
- From the outside of the **right XY core**, insert one frame-clip into the extrusion and rotate it by 90° clockwise. *Hint: use the Needle-nose pliers to rotate the frame-clip.*
- Insert the second frame-clip with the same process.
- Using a fixing-card, align the frame-clips on the left side of the extrusion.

PASO 5 Frame holder securing



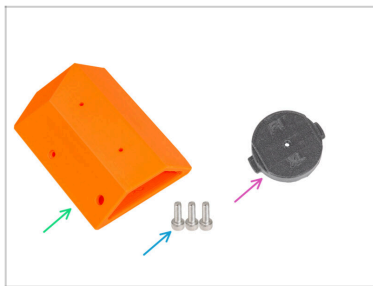
- Attach the prepared XL-frame-holder and attach it onto the frame-clips.
- Secure the XL-frame-holder with two M3x10 using a 2.5 mm Allen key. **Do not overtighten the screws!**
- Insert and secure the M3x8bT screw using a T10 Torx screwdriver. **Do not overtighten the screw!**

PASO 6 Buddy cam securing



- ◆ Align the Buddy3D cam with the XL-cam-holder as in the picture.
- ◆ **While holding the XL-frame-holder from the right side**, attach the Buddy cam to the XL-cam-holder.
- ◆ Turn the Buddy3D cam 90° clockwise to secure it in its position.
- ◆ Connect the camera with a USB-C cable.

PASO 7 XL & ENC: parts preparation



- ◆ **Para los siguientes pasos, por favor prepara:**
- ◆ XL-ENC-frame-holder (1x)
- ◆ M3x10 screw (3x)
- ◆ XL-Cam-holder (1x)

PASO 8 Frame holder securing



- ◆ Attach the XL-cam-holder to the XL-ENC-frame-holder and secure it with one M3x10 screw using a 2.5 mm Allen key. **Do not overtighten the screw!**
- ◆ Open the lid.
- ◆ Attach the prepared XL-ENC-frame-holder to the **upper left corner** inside the XL Enclosure.
- ◆ Secure the XL-ENC-frame-holder with two M3x10 screws using a 2.5 mm Allen key. **Do not overtighten the screw!**

PASO 9 Buddy cam securing



- ◆ Align the Buddy3D cam with the XL-cam-holder as in the picture.
- ◆ Attach the Buddy3D cam to the XL-cam-holder and turn the Buddy3D cam 90° clockwise to secure it in its position.
- ◆ Connect the camera with a USB-C cable.
