

# Table of Contents

<b>IPA pigment filter</b> .....	3
Step 1 - Introduction .....	4
Step 2 - IPA pigment filter, parts preparation .....	5
Step 3 - Assembling the filter holder .....	6
Step 4 - Preparing the filter .....	7
Step 5 - Completing .....	7
Step 6 - Filter securing .....	8
Step 7 - Inserting into CW .....	8
Step 8 - It's done! .....	9

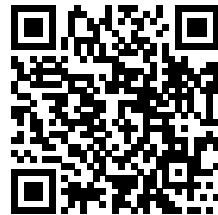


# IPA pigment filter



[help.prusa3d.com/g397213](https://help.prusa3d.com/g397213)

Scan the QR code to  
display the latest  
version of this  
chapter.



## STEP 1 Introduction



- i** The filter can be used in **CW1 /CW1S**.
- The filter can be purchased on <https://www.prusa3d.com>.
- Print models can be downloaded here. Models are for both SLA and FDM.
- New CW1 / CW1S 3.3.0 firmware includes IPA filtering mode.
- !** **Be gentle, more pressure can damage or tear the filter.**


## STEP 2 IPA pigment filter, parts preparation






- For the following steps, please prepare:
- IPA pigment filter (1x)
- Filter holder bottom (1x)
- Filter holder top (1x)

### STEP 3 Assembling the filter holder







 **Assemble the filter before mounting to the CW,** otherwise you can damage the filter if you going to complete the top and bottom printed parts after the filter is installed.

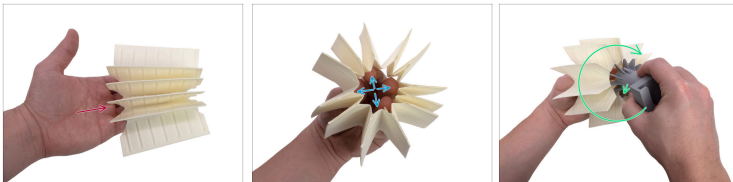
-  Parts have printed locking elements.
-  Insert the filter holder top part into the filter holder bottom printed part as described in the picture. Locking parts has to be inserted correctly.
-  Turn the filter holder top part to the left to secure both parts together.






## STEP 4 Preparing the filter



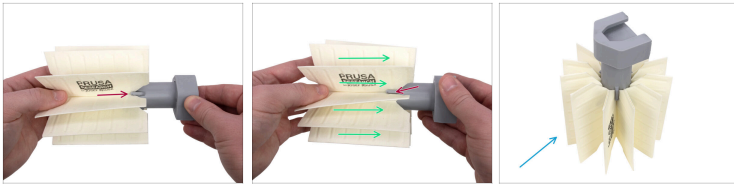
-  **Be gentle, more pressure can damage or tear the filter.**
-  Gently take the last folded sheet and insert it into the left glued sheet.
-  Gently push the folded sheet to secure it inside the glued sheet.
-  The filter is ready.

## STEP 5 Completing



-  **Be gentle, more pressure can damage or tear the filter.**
-  Insert 3-4 fingers into the prepared filter.
-  Use your fingers to gently open the filter as described in the picture.
-  **Every blade of the printed part has one own filter sheet.**
-  Use your fingers to open each filter sheet and insert the printed part into the filter clockwise.

## STEP 6 Filter securing



- ◆ The printed part has 3 locks around the perimeter.
- ⚠ **Be gentle, more pressure can damage or tear the filter.**
- ◆ Gently push the filter towards the printed part and secure the position in 3 locks around the perimeter.
- ◆ The filter is prepared and secured.

## STEP 7 Inserting into CW



- ⚠ **Use gloves.** The CW1 / CW1S parts may be wet from the IPA.
- ◆ For this step, please prepare these things:
  - ◆ CW1 / CW1S Stainless steel tank lid
  - ◆ Assembled IPA pigment filter
- ◆ On the tank lid, press the plastic button to push out the knob from the opposite side.
- ◆ When the knob is pushed out, slide the IPA filter assembly onto the holder from the bottom side.

## STEP 8 It's done!



- ◆ Good job!
- ◆ More info in the article



---

---

---

---

---

---

---

---

---

---



---

---

---

---

---

---

---

---

---

---



---

---

---

---

---

---

---

---

---

---

