

Table of Contents

- Filament Guide addon (MK4S/MK4) 3**
 - Step 1 - Introduction 4
 - Step 2 - Spool holder parts preparation 5
 - Step 3 - Spool holder assembly 5
 - Step 4 - Filament guide parts preparation
..... 6
 - Step 5 - Filament guide assembly (part 1) 7
 - Step 6 - Filament guide assembly (part 2)
..... 8
 - Step 7 - Loading a filament 8
 - Step 8 - Standby filament 9

Filament Guide addon (MK4S/MK4)



help.prusa3d.com/g413227

Scan the QR code to
display the latest
version of this
chapter.

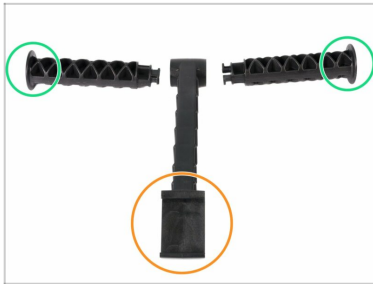


STEP 1 Introduction



- ◆ The **Filament guide** is an optional accessory for your **Original Prusa MK4** printer. When printing tall objects with a full filament spool, this accessory prevents filament tangling if it falls off the spool to the side.
- ◆ Where to get the Filament guide?
 - ◆ Factory-assembled printers include the guide (marked E1) and fasteners in the package.
 - ◆ A G-code pre-sliced for PLA (marked R1) can be found on the bundled USB flash drive.
 - ◆ An editable 3MF file can be found on Printables or in the drivers' package.
- ⓘ Note that marking on the printed parts is either Ex for factory printed, on Rx for self-printed. The geometry is the same.

STEP 2 Spool holder parts preparation



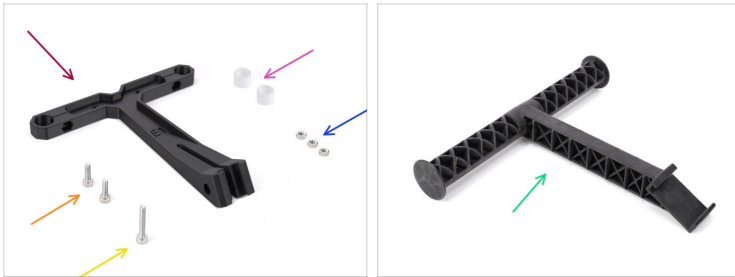
- ◆ For the following steps, please prepare:
- ◆ Spool holder **Center part** (1x)
- ◆ Spool holder **Side arm** (2x)

STEP 3 Spool holder assembly



- ◆ Place all three parts in front of you. Note both "arms" are identical. Make sure the C shaped opening, which will snap on the printer's frame is facing you.
- ◆ Take the "arm" on the right side, insert it gently into the main part and rotate it clockwise. It should take about half the turn to lock the part in place.
- ◆ Take the other "arm" on the left side, insert it gently into the main part and rotate it anti-clockwise until it locks in place.

STEP 4 Filament guide parts preparation



● **For the following steps, please prepare:**

● Filament guide (1x)

● Filament guide PTFE (2x)

● M3n nut (3x)

● M3x10 screw (2x)

● M3x18 screw (1x)

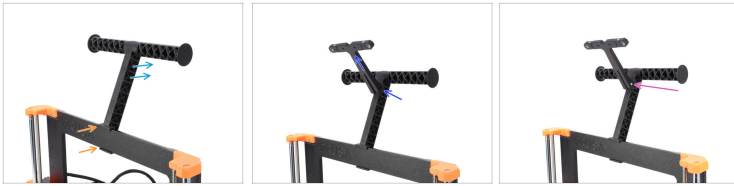
● Assembled spool holder (1x) *to attach the filament guide to*

STEP 5 Filament guide assembly (part 1)



- ◆ Insert two M3n nuts into the marked openings.
 - ◆ Use the longer M3x18 screw as a handle for inserting the nut.
- ◆ Insert the two PTFE tubes into the marked openings.
- ◆ Fix the tubes in place with two M3x10 screws from the other side.
- ◆ Insert the third M3n nut into the opening on the side.

STEP 6 Filament guide assembly (part 2)



- Attach the spoolholder onto the **middle** of the printer's frame.
- Make sure the spool holder is inclined towards the back of the printer.
- Attach the filament guide onto the spool holder. It should click in between the top two ribs, pointing upwards, as seen in the photo.
- Fix the guide in place using **M3x18** screw.

STEP 7 Loading a filament



- Attach a spool of your favorite Prusament onto one of the spool holder side parts.
- To load a filament, take the filament end and route it through the PTFE in the guide. Then, load it into the printer's extruder.

STEP 8 Standby filament



- To prevent filament tangling, when a given spool is not in use, hook up the filament end into the small opening on the spool guide.
- This comes in handy if you have two spools on the holder.
