

# Table of Contents

## Packing printer for transport - Original Packing

<b>Material (XL)</b> .....	3
Step 1 - Introduction .....	4
Step 2 - Tools necessary for this step .....	5
Step 3 - Necessary fixations for this guide .....	6
Step 4 - Necessary fixations for this guide .....	7
Step 5 - Preparing the printer .....	8
Step 6 - Removing the Wi-Fi antenna .....	9
Step 7 - Disconnecting the PTFE tube .....	9
Step 8 - Disconnecting the extruder cable .....	10
Step 9 - Removing the xl-dock-cable-router .....	10
Step 10 - Removing the extruder .....	11
Step 11 - Removing the extruder .....	11
Step 12 - Packing the extruder .....	12
Step 13 - Fixing the metal insert .....	13
Step 14 - Disassembling the LCD .....	13
Step 15 - Disassembling the LCD .....	14
Step 16 - Removing the spool holder .....	14
Step 17 - Preparing the bottom .....	15
Step 18 - Preparing the bottom .....	15
Step 19 - Preparing the bottom .....	16
Step 20 - Inserting the printer .....	17
Step 21 - Installing the fixations .....	18
Step 22 - Preparing the top .....	18
Step 23 - Preparing the top .....	19
Step 24 - Installing the top .....	19
Step 25 - Installing the top fixation .....	20
Step 26 - Installing the top fixation .....	20
Step 27 - Preparing the shipping straps .....	21
Step 28 - Preparing the shipping straps .....	21
Step 29 - Wrapping the package .....	22
Step 30 - Labelling the package .....	23

Step 31 - Hooray! The printer is ready to ship  
..... 23

# Packing printer for transport - Original Packing Material (XL)



[help.prusa3d.com/g417468](https://help.prusa3d.com/g417468)

Scan the QR code to  
display the latest  
version of this  
chapter.



## STEP 1 Introduction



- ◆ This guide will outline how to prepare and pack down your **Original Prusa XL** for return or repair using the packing material we supply with assembled printers.
- ◆ Contact our Customer support to receive the shipping label.
- ⓘ Be sure to read each step carefully! Colors on the Hexagon bullet points correspond to markers in the photos.
- ⚠ **The package with the printer is heavy! Always ask another person for help with handling.**

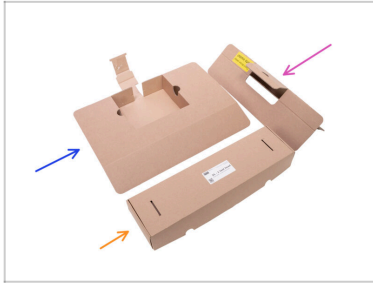
## STEP 2 Tools necessary for this step <sup>(XL)</sup>



### For this guide, please prepare:

- 2,5mm Allen key
- 4mm Allen key
- TX10 Torx key
- Black packing tape
- Wrapping tape
- Fragile stickers (4x) Can be downloaded here.
- Accessories for return shipment (you received with the printer)

### STEP 3 Necessary fixations for this guide



For this manual, **please prepare the complete original packaging material** in which the Original Prusa XL printer was sent to you.

For this guide, please prepare:

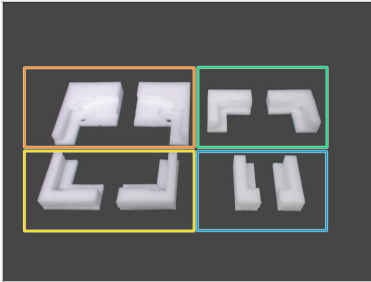
Top front cardboard fixation

Top rear cardboard fixation

Extruder box

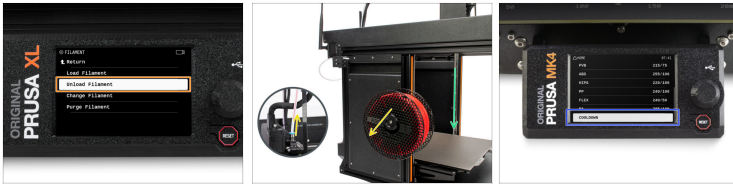
The list continues in the next step...

## STEP 4 Necessary fixations for this guide



- ◆ **For this guide, please prepare:**
- ◆ Left and right bottom rear fixation
- ◆ Left and right bottom front fixations
- ◆ Left and right top rear fixations
- ◆ Left and right top front fixations

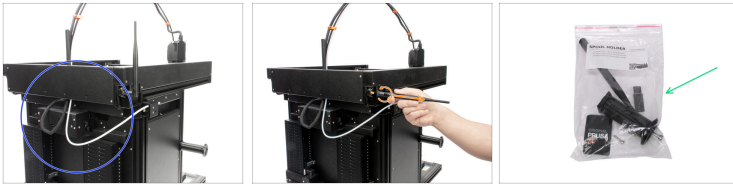
## STEP 5 Preparing the printer<sup>(XL)</sup>







- 🟠 If you have loaded the filament, unload it from the hotend. On the screen, navigate to *Filament* -> *Unload Filament*.
- 🟡 Remove the filament from the hotend. It is necessary to completely remove it from the printer.
- 🟢 Move the Z-axis down. On the screen, navigate to *Control* -> *Move axis* -> *Move Z*.
- 🟡 Cool down the printer. Go to *Preheat* -> *COOLDOWN*.
- ⚠️ **Wait until the hot parts are cooled down to ambient temperature. It takes approximately 10 minutes.**

---

## STEP 6 Removing the Wi-Fi antenna<sup>(XL)</sup>





 **Make sure the printer is cooled down.**

-  Turn the printer OFF and unplug the power cord.
-  Turn the printer with its back to you.
-  Unscrew and remove the Wi-Fi antenna from the printer.
-  Place the antenna into the bag with other accessories.

---

## STEP 7 Disconnecting the PTFE tube



-  Push the black collet to release the PTFE tube.
-  Gently pull out the PTFE tube.

---

## STEP 8 Disconnecting the extruder cable<sup>(XL)</sup>



- ◆ Slightly loosen two screws on the cover. No need to remove them completely. Push the cover to the right and remove it from the printer.
- ◆ Press the secure pin and release the extruder cable.
- ◆ Attach the connectors cover to the screws. Push it all the way to the left and tighten the screws.

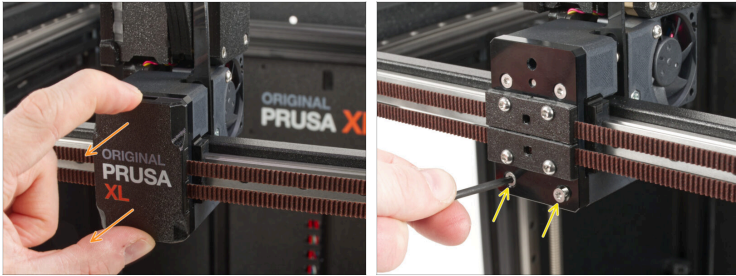
---

## STEP 9 Removing the xl-dock-cable-router



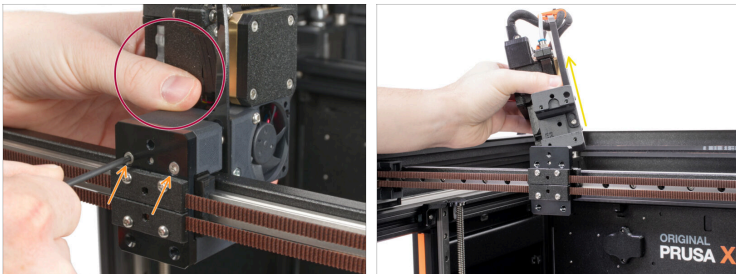
- ◆ Push the 2,5mm Allen key all the way through the hole in the rear metal sheet until you reach the screw in the xl-dock-cable-router and release the screw. **Leave the screw in the xl-dock-cable-router.**
- ◆ Take off the xl-dock-cable-router.
- ◆ Leave the extruder cable bundle with the PTFE tube freely over the printer to the rear side.


## STEP 10 Removing the extruder<sup>(XL)</sup>



- Remove the X-carriage-cover from the X-carriage.
- Use the TX10 key to unscrew both lower M3x12b.

## STEP 11 Removing the extruder



-  Hold the extruder with your hand to pretend the fall of the extruder while unscrewing.
- Use the TX10 key to unscrew both upper M3x12b.
- Take off the extruder.

## STEP 12 Packing the extruder<sup>(XL)</sup>



- Pack the extruder carefully into the box with the fixture provided.
- First, close the bottom part of the box.
- Second, close the upper part of the box.
- Put the extruder packaging aside for now, we'll use it later.

## STEP 13 Fixing the metal insert



- i The M3x10 screw prevents the damage of the plastic parts during the transport.
- Take one M3x10 screw from the spare parts.
- Insert the M3x10 screw into the insert and secure it using a 2.5mm Allen key. **The metal insert has not move!**

## STEP 14 Disassembling the LCD



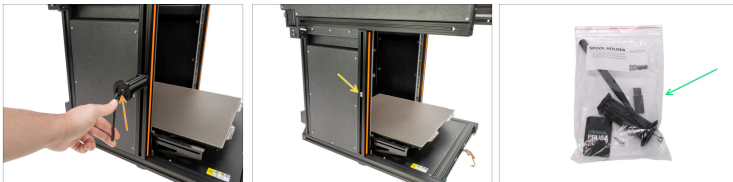
- Use 2,5mm Allen key to unscrew both M3x18 screws from the LCD supports.
- Gently unplug the LCD cable.

## STEP 15 Disassembling the LCD<sup>(XL)</sup>



- Use the TX10 key to release the screw securing the PE cable.
- Let the cables hang freely.
- Pack the LCD into the bubble wrap to prevent damage while shipping.

## STEP 16 Removing the spool holder



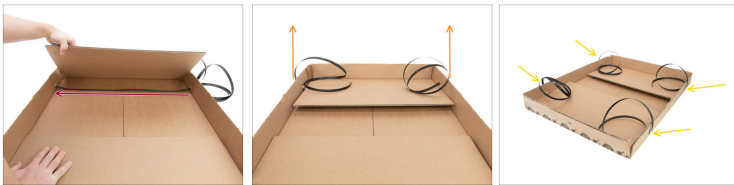
- Use a 4mm Allen key to release the M5x85 screw and take off the spoolholder.
- Leave the M5nEs in the frame.
- Pack the spoolholder a into the bag with other accessories.
- Put the printer aside for now, we'll use it later.

## STEP 17 Preparing the bottom <sup>(XL)</sup>



- ◆ The bottom part of the box has 4 pre-cut holes for shipping straps.
- ◆ Use your finger to create holes in the cardboard.

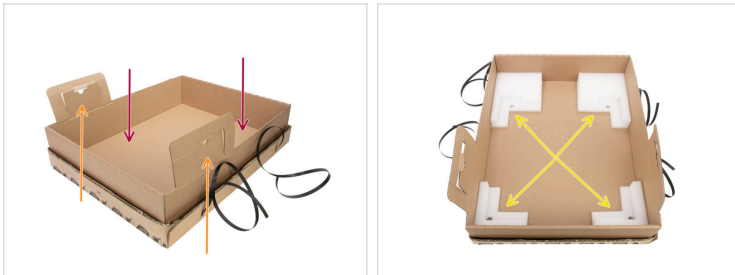
## STEP 18 Preparing the bottom



**⚠ Do not twist the shipping straps.**

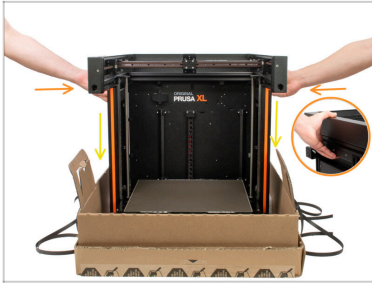
- ◆ Take the shipping straps.
- ◆ Stretch the shipping strap between two holes as described in the picture.
- ◆ Move the shipping strap to be the same length on both sides.
- ◆ Stretch the shipping strap on the second side of the bottom part box.

**STEP 19** Preparing the bottom <sup>(XL)</sup>



- ◆ Insert the cardboard base into the bottom part of the box.
- ◆ The front of the box shows cardboard cuts on the sides.
- ◆ Put the fixation into the cardboard base as described in the picture.

## STEP 20 Inserting the printer



**⚠ Do not hold the printer by the top metal profiles!!!**  
Otherwise, you may warp the printer and damage the LED lighting inside the profiles.

**⚠ Handle the printer in two persons.**

🟡 Use the side handles on both sides of the printer to handle.

🟡 Insert the printer into the cardboard base.

ⓘ Be careful to orient the printer correctly to the front of the box base.

⬛ Keep the steel sheet on the printer. No need to pack it separately.

## STEP 21 Installing the fixations<sup>(XL)</sup>



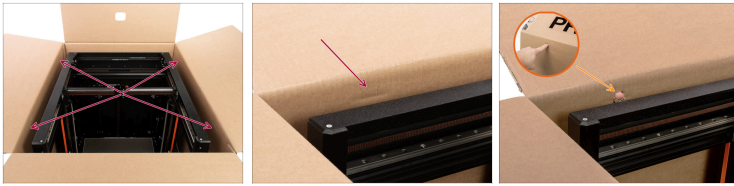
- (i)** The extruder box will "lock" the printer in its place.
- ◆** Lay out the box cutouts so that the box can be pushed through them.
- ◆** Lock the cardboard pins into the extruder box.

## STEP 22 Preparing the top



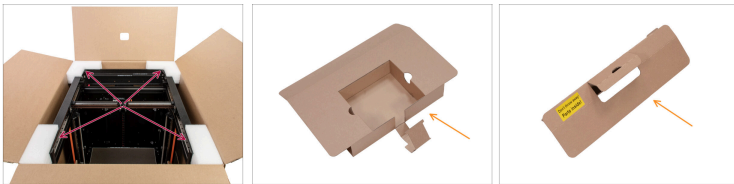
- ◆** Use a knife to cut the tape and open the box.
- ◆** Put the top part on a prepared cardboard base.

## STEP 23 Preparing the top<sup>(XL)</sup>



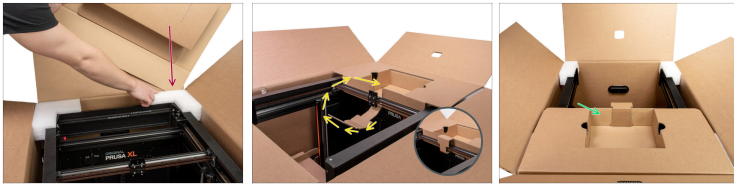
- 🔴 Locate the pre-cuts on the top part.
- 🟡 Use your finger to create holes.
- ⬛ The holes are for the shipping straps. We will use them later.





## STEP 24 Installing the top



- ⚠️ **Front and back white fixations are not the same.**
- 🔴 Put four white fixations on top of the printer.
- 🟡 Prepare top cardboard fixations, we'll use them in the next steps.





## STEP 25 Installing the top fixation<sup>(XL)</sup>



-  Put the larger cardboard fixation between the box and the white fixture.
-  Turn the cardboard cutout around the X-carriage to fix it in position.
-  Rotate the package.
-  Use a tape to secure the cutout.

## STEP 26 Installing the top fixation



-  Put the smaller cardboard fixation between the box and the white fixture.
-  Rotate the package.
-  Use the space in the fixation to store accessories that you received with the printer.
-  If you have a Prusament box, you can fill it with accessories and use the free space in a larger cardboard fixture.

## STEP 27 Preparing the shipping straps<sup>(XL)</sup>



**⚠ The shipping strap must be flattened, not twisted.**

- 🟠 Push the strap through the prepared hole in the top part box.
- 🟡 Do this step for all straps on both sides.

## STEP 28 Preparing the shipping straps



**⚠ Check if are the shipping straps all the same length.**

- 🟠 Prepare the shipping strap clip.
- ⬛ For securing shipping straps use this video.

## STEP 29 <sup>(XL)</sup> Wrapping the package



- Use wrapping tape to tape all places as described in the pictures.
- ⚠ **Make at least a minimum of 3 lines of wrapping tape on yellow spots.**
- Cover the shipping straps with wrapping tape.
- Use packing tape or food wrap (transparent) for wrapping the whole package. You'll protect your package from unnecessary damage.

## STEP 30 Labelling the package <sup>(XL)</sup>



- Place the "Fragile" stickers at least on four sides of the box. **Do not place them on the top or bottom side.**
- ⓘ You get the shipping label from our Customer support.
- Place the shipping label on the side with the fragile sticker.

## STEP 31 Hooray! The printer is ready to ship



- **Great job!** Your printer is ready for shipping.



---

---

---

---

---

---

---

---

---

---



---

---

---

---

---

---

---

---

---

---

