

Tabla de Contenido

Embalaje de la impresora para devolución -

Material de embalaje original (XL)	3
Paso 1 - Introducción	5
Paso 2 - Tools necessary for this step	6
Paso 3 - Fijaciones necesarias para esta guía	7
Paso 4 - Fijaciones necesarias para esta guía	8
Paso 5 - Preparing the printer	9
Paso 6 - Removing the Wi-Fi antenna	10
Paso 7 - Disconnecting the PTFE tube	10
Paso 8 - Disconnecting the extruder cable	11
Paso 9 - Removing the xl-dock-cable-router	11
Paso 10 - Removing the extruder	12
Paso 11 - Removing the extruder	12
Paso 12 - Packing the extruder	13
Paso 13 - Fixing the metal insert	14
Paso 14 - Disassembling the LCD	14
Paso 15 - Disassembling the LCD	15
Paso 16 - Removing the spool holder	15
Paso 17 - Preparing the bottom	16
Paso 18 - Preparing the bottom	16
Paso 19 - Preparing the bottom	17
Paso 20 - Inserting the printer	18
Paso 21 - Installing the fixations	19
Paso 22 - Preparing the top	19
Paso 23 - Preparing the top	20
Paso 24 - Installing the top	20
Paso 25 - Installing the top fixation	21
Paso 26 - Installing the top fixation	21
Paso 27 - Preparing the shipping straps	22
Paso 28 - Preparing the shipping straps	22
Paso 29 - Wrapping the package	23
Paso 30 - Labelling the package	24

Paso 31 - ¡Hurra! La impresora está lista para ser enviada 24

Embalaje de la impresora para devolución - Material de embalaje original (XL)



help.prusa3d.com/g417472

**Escanea el código
QR para ver la última
versión de este
capítulo.**



PASO 1 Introducción



- ◆ This guide will outline how to prepare and pack down your **Original Prusa XL** for return or repair using the packing material we supply with assembled printers.
- ◆ Contact our Customer support to receive the shipping label.
- ⓘ Be sure to read each step carefully! Colors on the Hexagon bullet points correspond to markers in the photos.
- ⚠ ¡El paquete con la impresora es pesado! Pide siempre ayuda a otra persona para su manipulación.

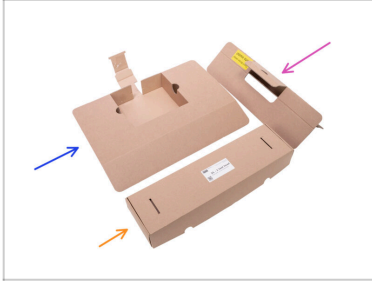
PASO 2 Tools necessary for this step



Para esta guía, prepara:

- Llave Allen de 2.5mm
- Llave Allen de 4mm
- Llave Torx TX10
- Black packing tape
- Cinta de embalaje
- Fragile stickers (4x) Can be downloaded here.
- Accessories for return shipment (you received with the printer)

PASO 3 Fijaciones necesarias para esta guía



● For this manual, **please prepare the complete original packaging material** in which the Original Prusa XL printer was sent to you.

● For this guide, please prepare:

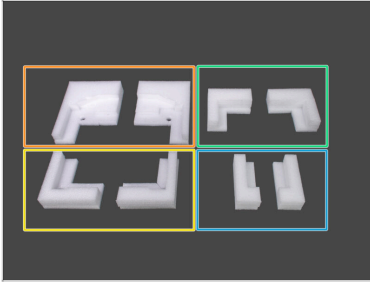
● Top front cardboard fixation

● Top rear cardboard fixation

● Extruder box

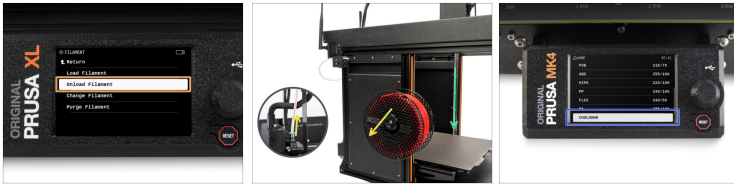
ⓘ La lista continúa en el siguiente paso...

PASO 4 Fijaciones necesarias para esta guía



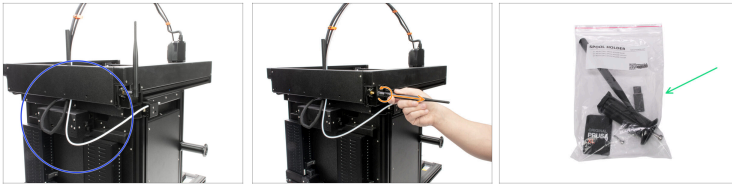
- **Para esta guía, prepara:**
- Left and right bottom rear fixation
- Left and right bottom front fixations
- Left and right top rear fixations
- Left and right top front fixations

PASO 5 Preparing the printer







- 🟠 Si has cargado el filamento, descárgalo del hotend. En la pantalla, navega hasta *Filamento* -> *Descargar Filamento*.
 - 🟡 Remove the filament from the hotend. It is necessary to completely remove it from the printer.
 - 🟢 Mueva el eje Z abajo. En la pantalla, navega hasta *Control* -> *Mover Eje* -> *Mover Z*.
 - 🟣 Enfía la impresora. Ve a *Precalear* -> *ENFRIAR*.
- ⚠️ **Espera a que las piezas calientes se enfríen a temperatura ambiente. Tarda aproximadamente 10 minutos.**

PASO 6 Removing the Wi-Fi antenna





 **Make sure the printer is cooled down.**

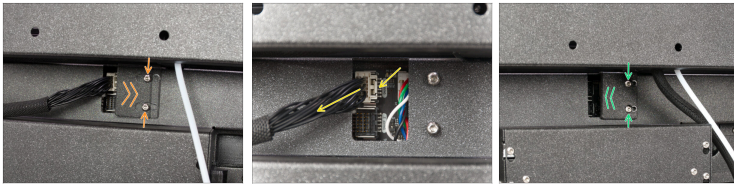
-  Turn the printer OFF and unplug the power cord.
-  Turn the printer with its back to you.
-  Unscrew and remove the Wi-Fi antenna from the printer.
-  Place the antenna into the bag with other accessories.

PASO 7 Disconnecting the PTFE tube



-  Empuja la presilla negra para liberar el tubo de PTFE.
-  Gently pull out the PTFE tube.

PASO 8 Disconnecting the extruder cable



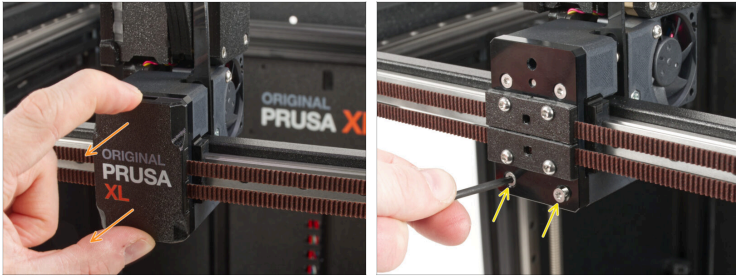
- Slightly loosen two screws on the cover. No need to remove them completely. Push the cover to the right and remove it from the printer.
- Press the secure pin and release the extruder cable.
- Fija la cubierta de los conectores a los tornillos. Empújala hacia la izquierda y aprieta los tornillos.

PASO 9 Removing the xl-dock-cable-router



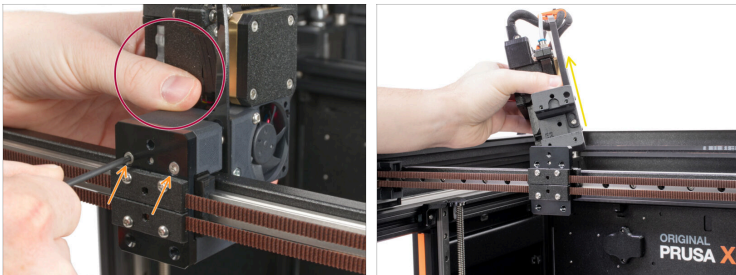
- Push the 2,5mm Allen key all the way through the hole in the rear metal sheet until you reach the screw in the xl-dock-cable-router and release the screw. **Leave the screw in the xl-dock-cable-router.**
- Sacar el xl-dock-cable-router.
- Leave the extruder cable bundle with the PTFE tube freely over the printer to the rear side.


PASO 10 Removing the extruder



- Remove the X-carriage-cover from the X-carriage.
- Use the TX10 key to unscrew both lower M3x12b.

PASO 11 Removing the extruder



-  Hold the extruder with your hand to pretend the fall of the extruder while unscrewing.
- Use the TX10 key to unscrew both upper M3x12b.
- Take off the extruder.

PASO 12 Packing the extruder



- Pack the extruder carefully into the box with the fixture provided.
- First, close the bottom part of the box.
- Second, close the upper part of the box.
- Put the extruder packaging aside for now, we'll use it later.

PASO 13 Fixing the metal insert



- i The M3x10 screw prevents the damage of the plastic parts during the transport.
- Take one M3x10 screw from the spare parts.
- Insert the M3x10 screw into the insert and secure it using a 2.5mm Allen key. **The metal insert has not move!**

PASO 14 Disassembling the LCD



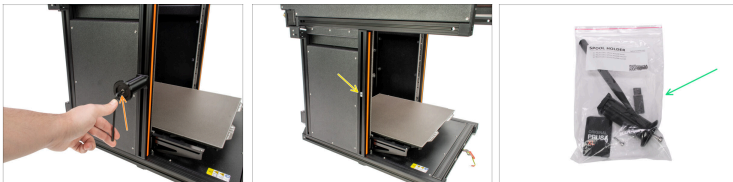
- Use 2,5mm Allen key to unscrew both M3x18 screws from the LCD supports.
- Gently unplug the LCD cable.

PASO 15 Disassembling the LCD



- Use the TX10 key to release the screw securing the PE cable.
- Let the cables hang freely.
- Pack the LCD into the bubble wrap to prevent damage while shipping.

PASO 16 Removing the spool holder



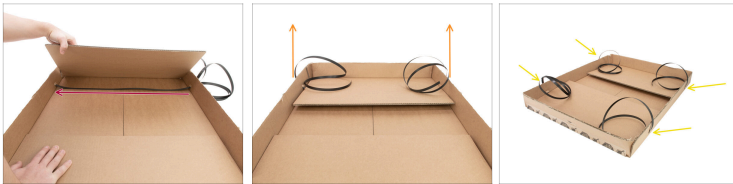
- Use a 4mm Allen key to release the M5x85 screw and take off the spoolholder.
- Leave the M5nEs in the frame.
- Pack the spoolholder a into the bag with other accessories.
- Put the printer aside for now, we'll use it later.

PASO 17 Preparing the bottom



- ◆ The bottom part of the box has 4 pre-cut holes for shipping straps.
- ◆ Use your finger to create holes in the cardboard.

PASO 18 Preparing the bottom



⚠ Do not twist the shipping straps.

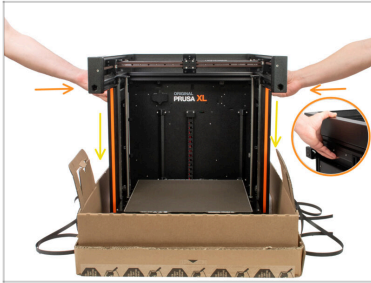
- ◆ Take the shipping straps.
- ◆ Stretch the shipping strap between two holes as described in the picture.
- ◆ Move the shipping strap to be the same length on both sides.
- ◆ Stretch the shipping strap on the second side of the bottom part box.

PASO 19 Preparing the bottom



- Insert the cardboard base into the bottom part of the box.
- The front of the box shows cardboard cuts on the sides.
- Put the fixation into the cardboard base as described in the picture.

PASO 20 Inserting the printer



⚠ Do not hold the printer by the top metal profiles!!!
Otherwise, you may warp the printer and damage the LED lighting inside the profiles.

⚠ Manipula la impresora entre dos personas.

🟡 Use the side handles on both sides of the printer to handle.

🟡 Insert the printer into the cardboard base.

ⓘ Be careful to orient the printer correctly to the front of the box base.

⬛ Keep the steel sheet on the printer. No need to pack it separately.

PASO 21 Installing the fixations



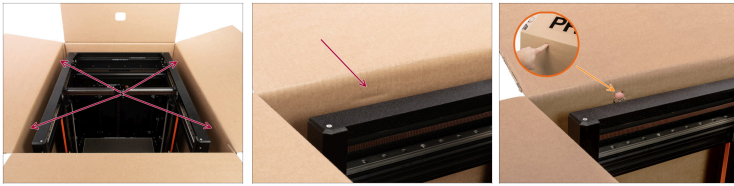
- (i)** The extruder box will "lock" the printer in its place.
- ◆** Lay out the box cutouts so that the box can be pushed through them.
- ◆** Lock the cardboard pins into the extruder box.

PASO 22 Preparing the top



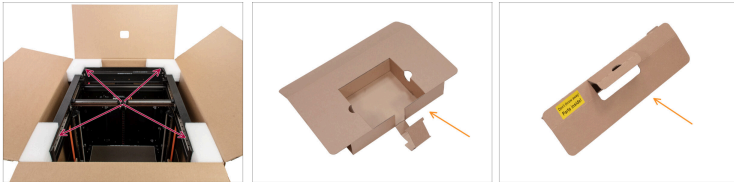
- ◆** Use a knife to cut the tape and open the box.
- ◆** Put the top part on a prepared cardboard base.

PASO 23 Preparing the top



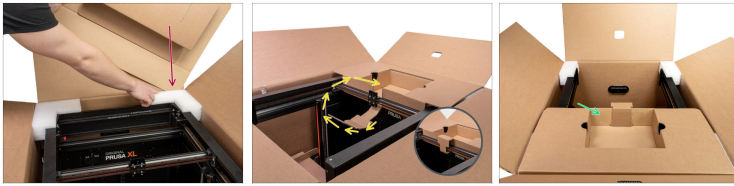
- Locate the pre-cuts on the top part.
- Use your finger to create holes.
- The holes are for the shipping straps. We will use them later.





PASO 24 Installing the top



- ⚠ **Front and back white fixations are not the same.**
- Put four white fixations on top of the printer.
- Prepare top cardboard fixations, we'll use them in the next steps.





PASO 25 Installing the top fixation



-  Put the larger cardboard fixation between the box and the white fixture.
-  Turn the cardboard cutout around the X-carriage to fix it in position.
-  Rotate the package.
-  Use a tape to secure the cutout.

PASO 26 Installing the top fixation





-  Put the smaller cardboard fixation between the box and the white fixture.
-  Rotate the package.
-  Use the space in the fixation to store accessories that you received with the printer.
-  If you have a Prusament box, you can fill it with accessories and use the free space in a larger cardboard fixture.

PASO 27 Preparing the shipping straps





 **The shipping strap must be flattened, not twisted.**

-  Push the strap through the prepared hole in the top part box.
-  Do this step for all straps on both sides.

PASO 28 Preparing the shipping straps



 **Check if are the shipping straps all the same length.**

-  Prepare the shipping strap clip.
-  For securing shipping straps use this video.


PASO 29 Wrapping the package



- Use wrapping tape to tape all places as described in the pictures.
- ⚠ **Make at least a minimum of 3 lines of wrapping tape on yellow spots.**
- Cover the shipping straps with wrapping tape.
- Use packing tape or food wrap (transparent) for wrapping the whole package. You'll protect your package from unnecessary damage.


PASO 30 Labelling the package



- Place the "Fragile" stickers at least on four sides of the box. **Do not place them on the top or bottom side.**
-  Nuestro servicio de atención al cliente te facilitará la etiqueta de envío.
- Place the shipping label on the side with the fragile sticker.

PASO 31 ¡Hurra! La impresora está lista para ser enviada



-  **¡Buen trabajo! Tu impresora está lista para enviarse.**
