

# Tabla de Contenido

## Embalaje de la XL Multicabezal para

### devolución - Material de embalaje original ..... 3

Paso 1 - Introduction ..... 5

Paso 2 - Tools necessary for this guide ..... 6

Paso 3 - Necessary cardboard fixations for this  
guide ..... 7

Paso 4 - Fijaciones necesarias para esta guía  
..... 8

Paso 5 - Preparing the printer ..... 9

Paso 6 - Removing the Spool Holder ..... 10

Paso 7 - Versiones del soporte de la antena Wi-fi  
..... 10

Paso 8 - Removing the Wi-Fi antenna: Side  
version ..... 11

Paso 9 - Removing the Wi-Fi antenna: Back  
version ..... 12

Paso 10 - Removing the Wi-Fi antenna: Back  
version ..... 13

Paso 11 - Disconnecting the Nextruder cables  
(Dual-head) ..... 14

Paso 12 - Disconnecting the Nextruder cables  
(Five-head) ..... 15

Paso 13 - Disconnecting the PTFE tube ..... 16

Paso 14 - Removing Nextruder docks ..... 16

Paso 15 - Removing the nozzle seals ..... 17

Paso 16 - Removing Nextruder docks ..... 17

Paso 17 - Fixing the metal insert ..... 18

Paso 18 - Packing the extruder ..... 18

Paso 19 - Packing the extruder ..... 19

Paso 20 - Disassembling the LCD ..... 19

Paso 21 - Disassembling the LCD ..... 20

Paso 22 - xLCD cables preparing ..... 20

Paso 23 - xLCD cables securing ..... 21

Paso 24 - Preparing the bottom ..... 21

Paso 25 - Preparing the bottom ..... 22

Paso 26 - Preparing the bottom ..... 22

Paso 27 - Inserting the printer .....	23
Paso 28 - Installing the fixations .....	24
Paso 29 - Installing the fixations (Single-head) .....	25
Paso 30 - Installing the fixations (Dual-head) .....	25
Paso 31 - Installing the fixations (Five-head) .....	26
Paso 32 - Preparando el superior .....	26
Paso 33 - Instalando las fijaciones superiores .....	27
Paso 34 - Instalando las fijaciones superiores .....	28
Paso 35 - Preparing the shipping straps .....	28
Paso 36 - Preparing the shipping straps .....	29
Paso 37 - Wrapping the package .....	30
Paso 38 - Labelling the package .....	31
Paso 39 - ¡Hurra! La impresora está lista para ser enviada .....	31

# Embalaje de la XL Multicabezal para devolución - Material de embalaje original



[help.prusa3d.com/g510173](https://help.prusa3d.com/g510173)

**Escanea el código  
QR para ver la última  
versión de este  
capítulo.**



## PASO 1 Introduction



- ◆ This guide will outline how to prepare and pack down your **Original Prusa XL** for return or repair using the packing material we supply with assembled printers.
- ⓘ This guide is for all toolhead versions of the Original Prusa XL printer.
- ◆ Contact our customer support to receive the shipping instructions and label.
- ⓘ Be sure to read each step carefully! Colors on the Hexagon bullet points correspond to markers in the photos.
- ⚠ ¡El paquete con la impresora es pesado! Pide siempre ayuda a otra persona para su manipulación.

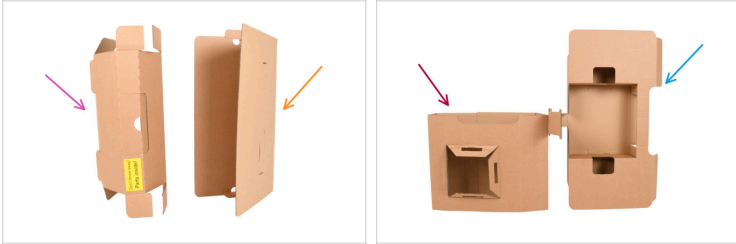
## PASO 2 Tools necessary for this guide



### ● Para esta guía, prepara:

- Llave Allen de 2.5mm
- 4mm Allen key
- TX10 Torx key
- Black packing tape or transparent cling wrap for added protection - optional, as you have the original packaging.
- Adhesive tape
- Fragile stickers (4x) Can be downloaded [here](#).
- Transport helpers that you received with your printer.
- Zip-tie (1x)

### PASO 3 Necessary cardboard fixations for this guide



- For this manual, **please prepare the complete original packaging material** in which the Original Prusa XL printer was sent to you.
- For this guide, please prepare:
  - Top front cardboard insert
  - Front inner insert
  - Cardboard insert
  - Top rear cardboard fixation
- ① Continúa en el siguiente paso...

## PASO 4 Fijaciones necesarias para esta guía



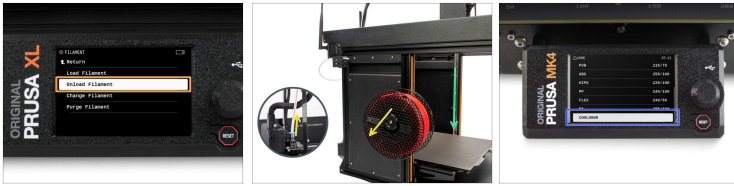
### ◆ Para esta guía, prepara:

- ◆ Left and right bottom rear fixation
- ◆ Left and right bottom front fixations
- ◆ Left and right top foam fixations
- ◆ Left and right top hardened cardboard fixations
- ◆ Extruder boxes ( one, two or five, depending on the number of toolheads on your printer)

Embalaje de la XL Multicabezal para devolución - Material  
de embalaje original

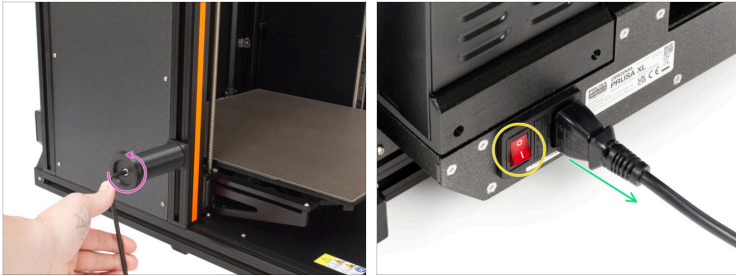
---

## PASO 5 Preparing the printer



- 🟠 Si has cargado el filamento, descárgalo del hotend. En la pantalla, navega hasta *Filamento* -> *Descargar Filamento*.
  - 🟡 Remove the filament from the hotend. It is necessary to completely remove it from the printer.
  - 🟢 Mueva el eje Z abajo. En la pantalla, navega hasta *Control* -> *Mover Eje* -> *Mover Z*.
  - 🟣 Enfía la impresora. Ve a *Precalear* -> *ENFRIAR*.
- ⚠️ **Espera a que las piezas calientes se enfríen a temperatura ambiente. Tarda aproximadamente 10 minutos.**

## PASO 6 Removing the Spool Holder



- ◆ Use the 4.0 mm Allen key to remove the screw holding the spool holders.
- ◆ Once you remove the spool holders, locate the power switch at the rear of the printer. Switch it to OFF (symbol "O").
- ◆ Unplug the power cable.






## PASO 7 Versiones del soporte de la antena Wi-fi



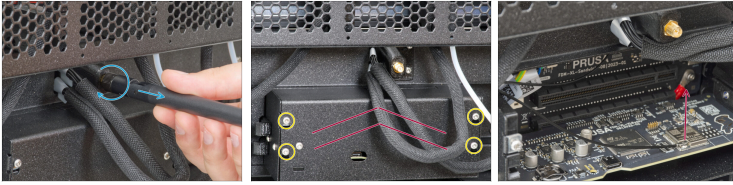
- ◆ The Original Prusa XL might be shipped with one of the two versions of the Wi-Fi antenna. Both work the same.
- ◆ Side version: Wi-Fi antenna holder is on the side at the rear of the printer. Go to the next step.
- ◆ Back version: Wi-fi antenna is in the middle at the rear of the printer. Skip to: **Removing the Wi-Fi antenna: Back version.**

## PASO 8 Removing the Wi-Fi antenna: Side version



-  **Make sure the printer is cooled down.**
-  Turn the printer with the rear facing you.
-  Unscrew and remove the Wi-Fi antenna from the printer.
-  Place the antenna and spool holder into the bag with other accessories.
-  Now, go to this step: **Disconnecting the Nextruder cables.**

## PASO 9 Removing the Wi-Fi antenna: Back version



**Make sure the printer is cooled down.**



Turn the printer with its back to you.



Unscrew and remove the Wi-Fi antenna from the printer.

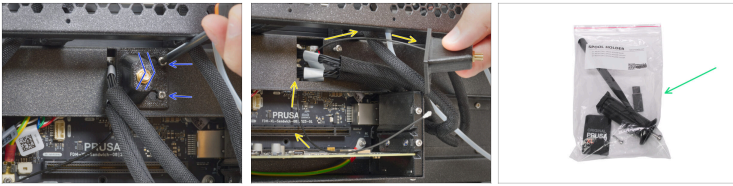


Loosen the four screws with a T10 key. There is no need to remove the screw completely.



Slide the XL-buddy-box-cover up and remove it.

## PASO 10 Removing the Wi-Fi antenna: Back version



- ◆ Disconnect the antenna connector from the XL buddy board.
- ◆ Loosen the two screws on the cover lightly, there is no need to remove them completely. Slide antenna holder to the right and remove it from the printer.
- ◆ Gently pull out the antenna holder with the cable from the opening in the rear-cable-management-upper. Add the antenna holder to the accessories bag.
- ◆ Add the antenna holder, antenna, and spoolholders to the accessories bag.

## PASO 11 Disconnecting the Nextruder cables (Dual-head)



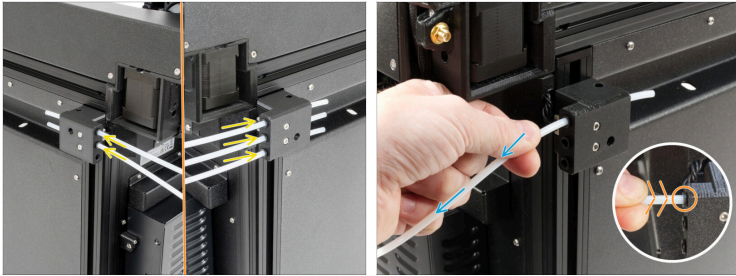
- i** This step is intended for the **Dual-head version of the printer**. If you have the Five-head version, skip to the next step.
- ◆ Afloja dos tornillos de la tapa ligeramente. No es necesario retirarlos completamente. Empuja la cubierta hacia la derecha y retírala de la impresora.
- i** The cover might not be present depending on your printer variant.
- ◆ Remove the Nextruder connectors from both of the slots. Make sure to press the safety latch so to release the connectors.
- ◆ Fija la cubierta de los conectores a los tornillos. Empújala hacia la derecha y aprieta los tornillos.
- ◆ Once the Nextruder cables on your Dual-head printer are disconnected, skip to this step: **Disconnecting the PTFE tube**.

## PASO 12 Disconnecting the Nextruder cables (Five-head)



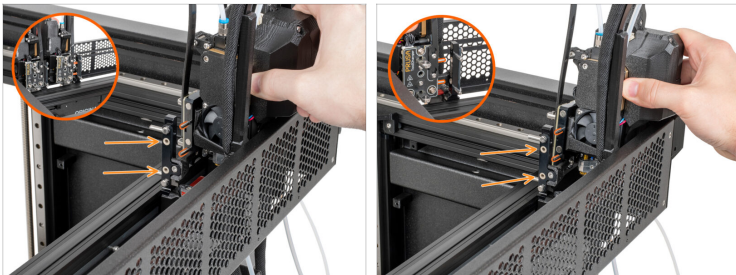
- i** **This step is intended for Five-head.** If you have the Dual-head version, skip to the next step.
- ⬢ Afloja cuatro tornillos de la tapa ligeramente. No es necesario retirarlos completamente. Empuja la cubierta hacia la derecha y retírala de la impresora.
  - ⬢ Disconnect the three Nextruder connectors from the slots. Make sure to press the safety latch so to release the connectors.

## PASO 13 Disconnecting the PTFE tube



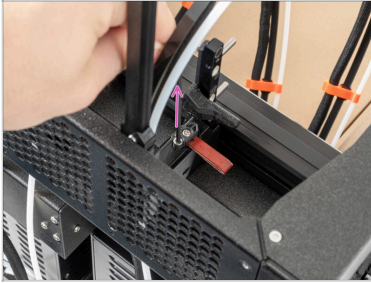
- There are two or five PTFE tubes on the side filament sensors depending on number of tool heads on your printer. The process is the same for both of them.
- Empuja la presilla negra para liberar el tubo de PTFE.
- Gently pull out the PTFE tube.

## PASO 14 Removing Nextruder docks



- Remove each Nextruder by pulling it outwards from the metal inserts.
- i** Aunque es de esperar una pequeña resistencia, ya que los insertos metálicos son magnéticos, utiliza una fuerza moderada.

## PASO 15 Removing the nozzle seals

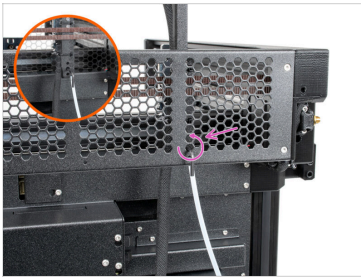


- Each of the nozzle docks have a nozzle seal that needs to be removed before removing the nozzle dock. Do that for all the toolheads on the printer.

- i** Place the nozzle seal together with the other accessories.

---

## PASO 16 Removing Nextruder docks



- Push the 2.5 mm Allen key all the way through the hole in the rear metal sheet until you reach the middle screw in the xl-dock-cable-router and loosen the screw until the dock is loose.
- Carefully pull up the Nextruder dock and cable from the printer.

## PASO 17 Fixing the metal insert



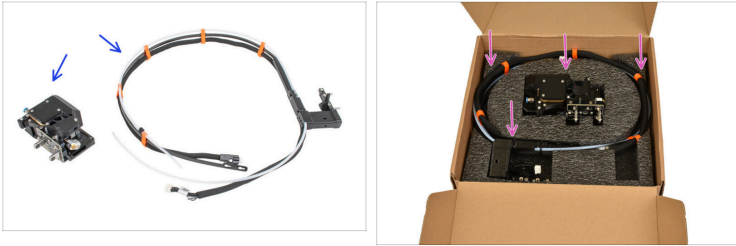
- i The M3x10 screw prevents the damage of the plastic parts during the transport.
- ◆ Take one M3x10 screw from the spare parts.
- ◆ Insert the M3x10 screw into the insert and secure it using a 2.5mm Allen key.  
**The metal insert has not move!**

## PASO 18 Packing the extruder



- ◆ Using the T10 key, loosen the screws marked on the picture, there is no need to remove them. Slide down the flexible plate of the cable bundle and remove it.
- ◆ Press down the blue collet to remove the PTFE tube.
- i If the PTFE is too slippery, try grabbing it with a piece of paper.
- ◆ Press the latch to detach the cable connector.

## PASO 19 Packing the extruder



- ◆ The extruder and dock will be separated.
- ◆ Pack the extruder, dock, cables and PTFE carefully into the proper places in the foam.
- ◆ Close the box, and put the extruder packaging aside for now, we'll use it later.

## PASO 20 Disassembling the LCD



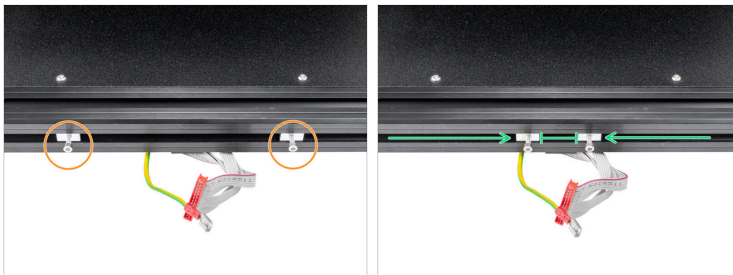
- ◆ Use the 2,5mm Allen key to unscrew both M3x18 screws from the LCD supports.
- ◆ Gently unplug the LCD cable.

## PASO 21 Disassembling the LCD



- Use the TX10 key to release the screw securing the PE cable.
  - Let the cables hang freely.
  - Pack the LCD into the bubble wrap to prevent damage while shipping. It will be placed in the top rear cardboard fixation later.
- (i)** Keep the M3x18/12 screws for the next step.

## PASO 22 xLCD cables preparing

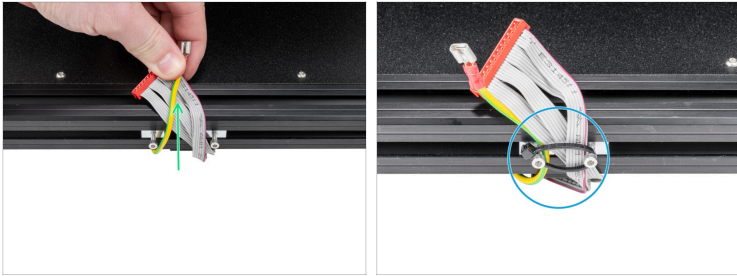


- Insert both screws into the M3nEs nuts and secure them. A few turns are enough.
- Slide the M3nEs nuts closer to the center of the printer. Leave a small gap for the cables.

Embalaje de la XL Multicabezal para devolución - Material  
de embalaje original

---

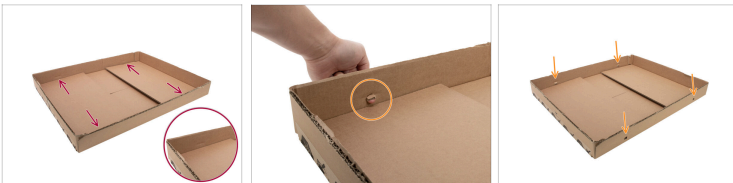
## PASO 23 xLCD cables securing



- Pull the xLCD cables up.
- Secure the zip-tie around the screws to hold the xLCD cables in place.

---

## PASO 24 Preparing the bottom







- The bottom part of the box has 4 pre-cut holes for shipping straps.
- Use your finger to push through the pre-cut holes in the cardboard.

## PASO 25 Preparing the bottom






 **Do not twist the shipping straps.**

-  Take the shipping straps.
-  Stretch the shipping strap between two holes as described in the picture.
-  Move the shipping strap to be the same length on both sides.
-  Stretch the shipping strap on the second side of the bottom part box.

## PASO 26 Preparing the bottom



-  Insert the cardboard base into the bottom part of the box.
-  The front of the box shows cardboard cuts on the sides.
-  Put the fixation into the cardboard base as described in the picture.

## PASO 27 Inserting the printer



**⚠ Do not hold the printer by the top metal profiles!!!** Otherwise, you may warp the printer and damage the LED lighting inside the profiles.

**⚠ Handle the printer in two people.**

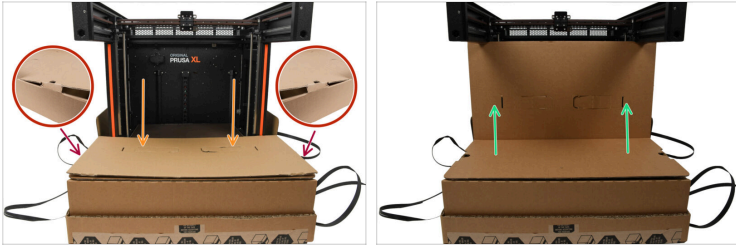
**🟡 Use the side handles on both sides of the printer to handle.**

**🟡 Insert the printer into the cardboard base.**

**ⓘ Be careful to orient the printer correctly to the front of the box base.**

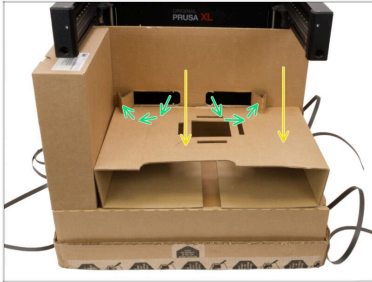
**⬛ Keep the steel sheet on the printer.** No need to pack it separately.

## PASO 28 Installing the fixations



- ✦ Bend the flaps of the main box, and attach the front inner insert on them on the side shown in the image.
- ⚠ **Secure the front inner insert by inserting the cutouts into the bottom box. See the picture**
- ✦ Lift the top part of the front inner insert so the CoreXY holds it up.
- ✦ Place the previously prepared Nextruder boxes on the sides of the printer.
- ⓘ If you have an Original Prusa XL with 1 toolhead, go to the next step
- ⓘ Si tienes una XL con 2 cabezales, ve al siguiente paso. Si tienes una XL con 5 cabezales, ve al paso 27.
- ⓘ If you have an Original Prusa XL with 5 toolheads, go to this step: **Installing the fixations (Five-head)**

## PASO 29 Installing the fixations (Single-head)



- Fold the cardboard insert and place it next to the extruder box.
- Fold the tabs from the front inner insert to hold down the cardboard insert.
- Once the bottom cardboard insert is secured in place, skip to this step: **Preparing the top**

## PASO 30 Installing the fixations (Dual-head)



- Fold the cardboard insert and add it between the extruder boxes.
- Fold the tabs from the front inner insert to secure the cardboard insert in place.
- Once the bottom cardboard insert is secured in place, skip to this step: **Preparing the top**

## PASO 31 Installing the fixations (Five-head)



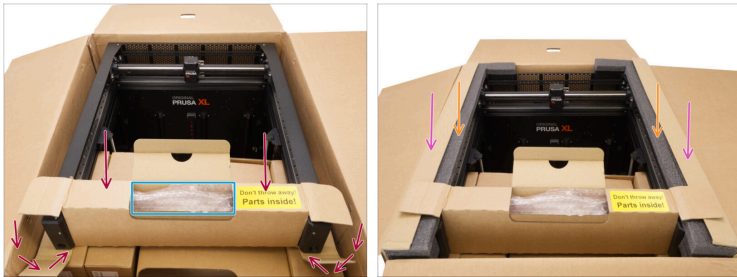
- Add the other three boxes for the extruders as shown in the picture.
- Fold the cardboard insert and add it between the extruder boxes.

## PASO 32 Preparando el superior



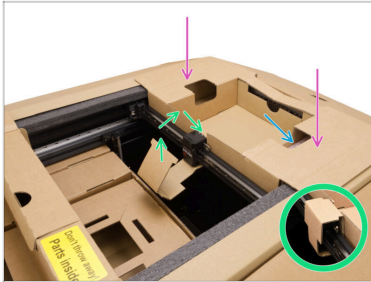
- Use a knife to cut the tape and open the box.
  - Put the top part on the prepared base
  - Open the top of the box to place the rest of the fixations.
- i** The next steps are the same for the 2 toolhead and 5 toolhead printers, even if only one of them appears in the images.

## PASO 33 Instalando las fijaciones superiores



- Place the top front cardboard fixation between the two front printer arms.
- Use the space in the Top front cardboard fixation to store accessories that you have received with the printer.
  - ⓘ Bend the flaps on the side of the top front cardboard fixation to be able to add the foam and hardened cardboard fixations.
- Insert the top foam protective fixations. The "L" shaped end of the foam fixation should be protecting the rear side of the printer.
  - ⓘ The "L" shaped end of the foam fixation should protect the rear side of the printer.
- Insert the top hardened cardboard protective fixations.

## PASO 34 Instalando las fijaciones superiores



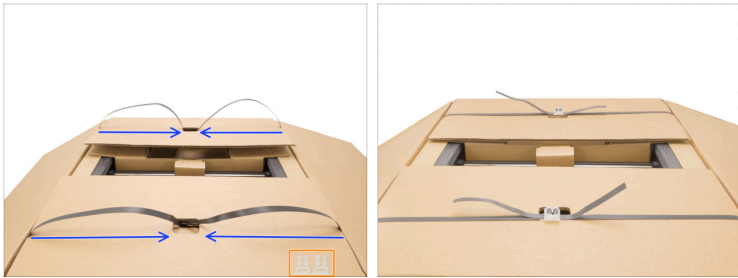
- Insert the top rear cardboard fixation.
- Turn the cardboard cutout around the X-carriage to fix it in position.
- Place the bubble-wrapped LCD into the compartment in the top rear cardboard fixation.

## PASO 35 Preparing the shipping straps



- ⚠ The shipping strap must be flattened, not twisted.**
- Push the strap through the prepared hole in the top part box.
- Do this step for all straps on both sides.

## PASO 36 Preparing the shipping straps



- ◆ Make sure that the shipping straps are all the same length.
- ◆ Prepare the shipping strap clips.
- ◆ For securing shipping straps, use **this video**.

## PASO 37 Wrapping the package




- Use wrapping tape to tape all places as described in the pictures.
- ⚠ **Make sure to apply at least 3 layers of wrapping tape on the yellow-highlighted areas.**
- Secure the shipping straps with at least two layers of adhesive tape to prevent any damage.
- If you have it, use black packing tape or transparent food wrap to wrap the whole package. This is optional, but recommended.

Embalaje de la XL Multicabezal para devolución - Material de embalaje original

---

## PASO 38 Labelling the package




- Place the "Fragile" stickers on at least four sides of the box. **Do not place them on the top or bottom side.**
-  Nuestro servicio de atención al cliente te facilitará la etiqueta de envío.
- Place the shipping label on the side with the fragile sticker. Make sure that the barcode is visible.

---

## PASO 39 ¡Hurra! La impresora está lista para ser enviada



-  **¡Buen trabajo! Tu impresora está lista para enviarse.**



---

---

---

---

---

---

---

---

---

---



---

---

---

---

---

---

---

---

---

---

