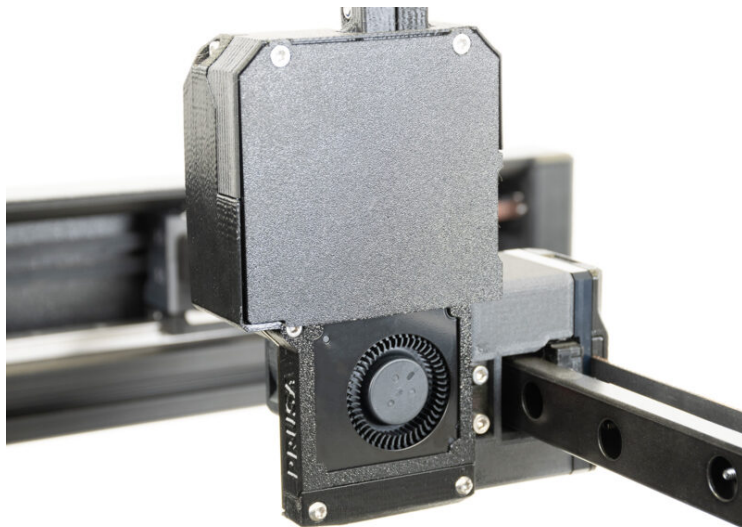


# Table of Contents

<b>How to replace a print fan (XL single tool) .....</b>	<b>3</b>
Step 1 - Introduction .....	4
Step 2 - Tools necessary for this guide .....	4
Step 3 - Preparing the printer .....	5
Step 4 - Protecting the heatbed .....	6
Step 5 - Disconnecting the print fan .....	7
Step 6 - Accessing the print fan .....	7
Step 7 - Removing the print fan .....	8
Step 8 - New print fan - parts preparation .....	8
Step 9 - Connecting the print fan .....	9
Step 10 - Mounting the extruder-plate .....	9
Step 11 - Mounting the print fan .....	10
Step 12 - It's done! .....	10



# How to replace a print fan (XL single tool)

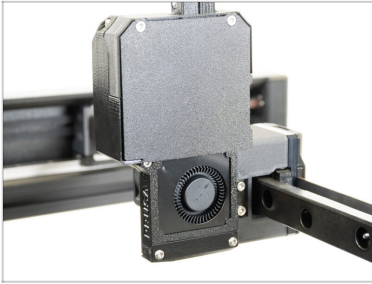


[help.prusa3d.com/g511916](https://help.prusa3d.com/g511916)

Scan the QR code to  
display the latest  
version of this  
chapter.

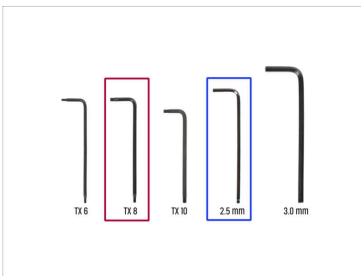


## STEP 1 Introduction



- ◆ This guide will take you through the replacement of the **print fan** on the **Original Prusa XL**.
- ⓘ Some parts might slightly differ. However, it does not affect the procedure.
- ◆ All necessary parts are available in our eshop.

## STEP 2 Tools necessary for this guide



- ◆ **For the following steps, please prepare:**
- ◆ TX 8 Torx key
- ◆ 2.5 mm Allen key
- ◆ A cardboard box for use as a heatbed protection during the assembly. *Hint: use the Prusament box.*

## STEP 3 Preparing the printer



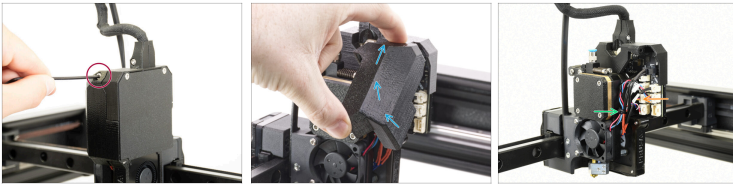
- Manually move the X-axis assembly all the way to the front side of the printer.
- Move the extruder approximately to the center of the X-axis.
- If you have loaded the filament, unload it from the hotend. On the screen, navigate to *Filament* -> *Unload Filament*.
- ⚠ **WARNING: The hotend and heatbed are very HOT. Do not touch these parts!!!**
- Remove the filament from the hotend. It is not necessary to completely remove it from the printer. Just a few centimeters (inches) above the extruder.

## STEP 4 Protecting the heatbed



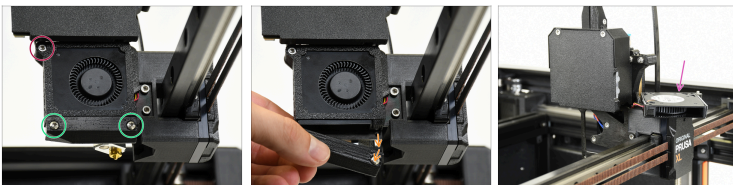
- ◆ **Before you proceed, it is recommended to protect the heatbed.**
- ◆ **Make sure the heatbed is cooled down to ambient temperature.** Place the empty cardboard box approximately to the front center part of the heatbed.

## STEP 5 Disconnecting the print fan



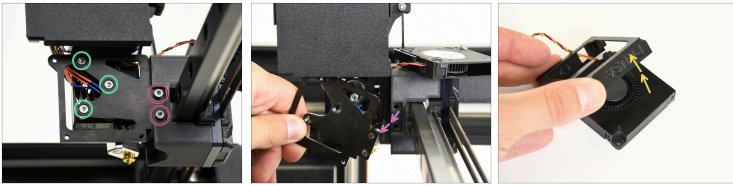
- ◆ Loosen the M3x14 screw of the dwarf-cover-door.
- ◆ Lift the dwarf-cover-door to access the electronics board.
- ◆ Cut the zip tie that is holding all the cables in place (be careful not to damage any of the cables while doing so).
- ⚠ **The connector has a safety latch. It is necessary to press the latch before disconnecting. Otherwise, the connector may get damaged.**
- ◆ Disconnect the print fan cable.

## STEP 6 Accessing the print fan



- ◆ Release the M3x14 screw of the print fan's plastic cover.
- ◆ Release the two TX8 Torx screws of the fan shroud under the print fan's plastic cover.
- ◆ Remove the fan shroud.
- ◆ Remove the print fan and place it on the X-carriage.

## STEP 7 Removing the print fan



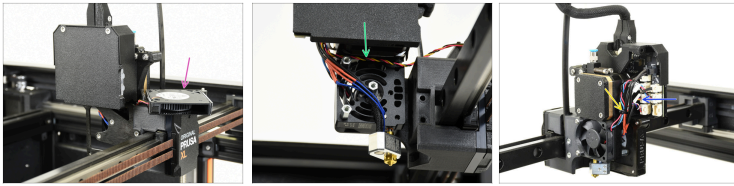
- ◆ Release the two M3x40 screws.
- ◆ Release the three M3x10b screws.
- ◆ Remove the extruder-plate metal part.
- ◆ Remove the print fan and gently separate it from its printed plastic cover.

## STEP 8 New print fan - parts preparation



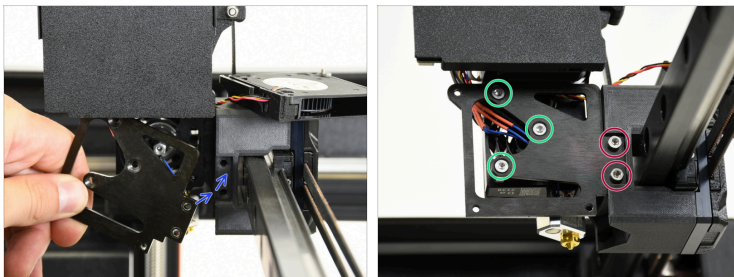
- ◆ **For the following steps, please prepare:**
- ◆ New print fan (1x)
- ◆ Zip tie (1x)

## STEP 9 Connecting the print fan



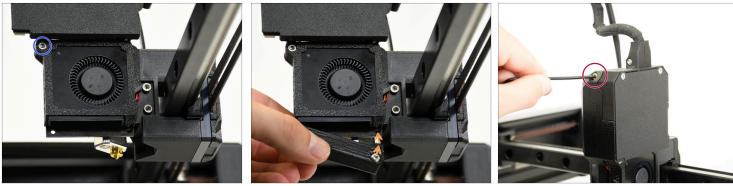
- ◆ Place the print fan on the X-carriage.
- ◆ Lead the print fan's cable as shown in the picture.
- ◆ Connect the print fan cable to the Dwarf board.
- ⚠ **Do not overtighten the zip tie!** Otherwise, you can break wires.
- ◆ Guide the zip tie around all extruder cables except for the hotend heater cable and hotend thermistor cable and slightly tighten it.

## STEP 10 Mounting the extruder-plate



- ◆ Place the extruder-plate into the cutout area and make sure the screw holes are aligned.
- ◆ Secure it with three M3x10b screws.
- ◆ Then secure it with two M3x40 screws.

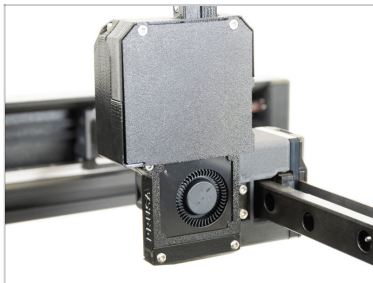
## STEP 11 Mounting the print fan



- ◆ Orientate the print fan according to the first picture and secure it with one M3x14 screw.
- ◆ Mount the fan shroud and secure it with two TX8 Torx screws.
- ◆ Mount the dwarf-cover-door and secure it with one M3x14 screw.

---

## STEP 12 It's done!



- ◆ **Good job!** You just replaced the print fan on your printer.
- ◆ To ensure everything works as expected and all wires are connected correctly, turn the printer on and **run the Fan test** found in *LCD menu -> Control -> Calibrations & Tests -> 1. Fan test.*



---

---

---

---

---

---

---

---

---

---



---

---

---

---

---

---

---

---

---

---



---

---

---

---

---

---

---

---

---

---