

Tabla de Contenido

How to fix Modular bed error (HW solution) ...	3
Paso 1 - Preparing the printer	4
Paso 2 - Parts preparation	4
Paso 3 - Disassembling the Heatbed parts	5
Paso 4 - Assembling replacement parts	6
Paso 5 - Assembling the Heatbed parts	7
Paso 6 - Final assembly	8

How to fix Modular bed error (HW solution)

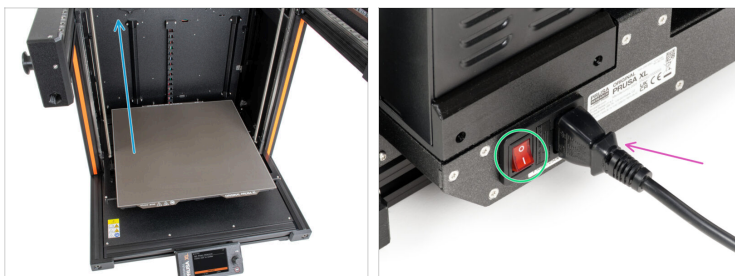


help.prusa3d.com/g512081

Escanea el código QR para ver la última versión de este capítulo.



PASO 1 Preparing the printer



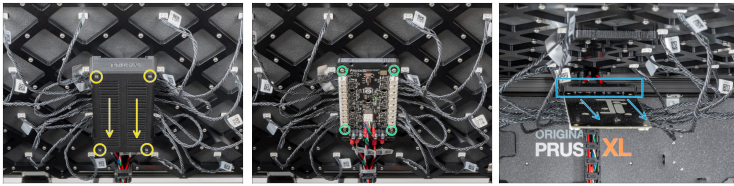
- Move the Heatbed all the way to the top
 - ⓘ *menu -> control -> move axis -> move Z*
- Apaga el interruptor (símbolo "O").
- Desde la parte posterior de la impresora, desenchufa el cable de la fuente de alimentación.

PASO 2 Parts preparation



- Para este capítulo, prepara por favor:
 - XL-bed-controller-mount-rear-E3 (1x)
 - Modular Bed PCB Shield (1x)

PASO 3 Disassembling the Heatbed parts



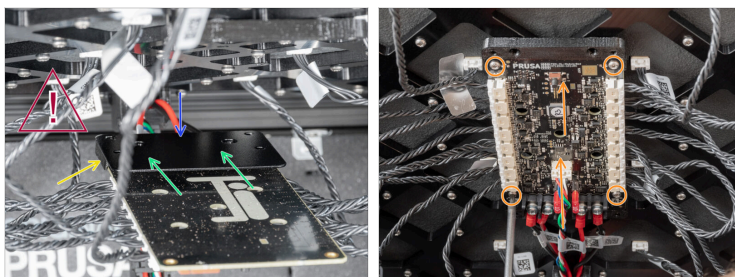
- ✦ Unscrew four M3x20rT screws and remove the cover.
- ✦ Unscrew four M3x10rT screws and remove them.
- ⚠ **Be careful around the electronics**
- ⓘ The heatbed board will be held by cables.
- ✦ Remove the *XL-bed-controller-mount-rear-E2* (plastic part) from the top of the board.

PASO 4 Assembling replacement parts



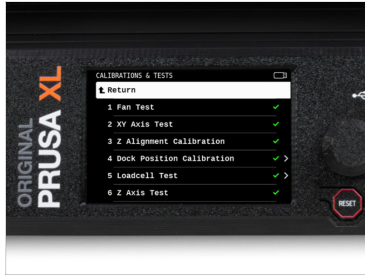
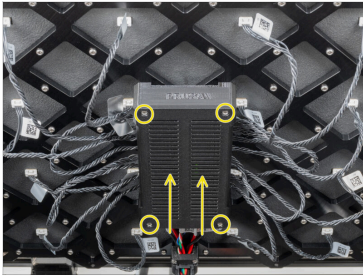
- i Remove the two M3nE nuts from the old part *XL-bed-controller-mount-rear-E2*.
- Add two M3nE nuts to the new plastic part (*XL-bed-controller-mount-rear-E3*).
- Place the *Modular Bed PCB Shield* on the *XL-bed-controller-mount-rear-E3*.
- i **The parts are not fixed together.**

PASO 5 Assembling the Heatbed parts



- ◆ Put the plastic part with the metal part on the bottom face of the electronic board.
- ◆ XL-bed-controller-mount-rear-E3
- ◆ Modular Bed PCB Shield
- ⓘ The Modular Bed PCB Shield should be on the top of the plastic part
- ⚠ **The plastic and metal parts are not attached to each other. You have to hold the parts.**
- ◆ Vuelve a colocar la placa en la base calefactable. Fija la placa con cuatro tornillos M3x10t.

PASO 6 Final assembly



- Attach the electronic cover back and secure four M3x16 screws.
- Well done!
- ⓘ Perform a self-test after assembly is done.
