

Table of Contents

How to lubricate the coupler pins on Original

Prusa XL (Multi-Tool)	3
Step 1 - Introduction	4
Step 2 - Tools necessary for this chapter	5
Step 3 - Parking the Nextruder	5
Step 4 - Preparing the printer	6
Step 5 - Assembling the applicator	6
Step 6 - Detaching the Nextruder	7
Step 7 - Cleaning the coupler screws	7
Step 8 - Lubricating the coupler screws	8
Step 9 - Checking the grease	8
Step 10 - Parking the Nextruder	9
Step 11 - That's it	9

How to lubricate the coupler pins on Original Prusa XL (Multi-Tool)

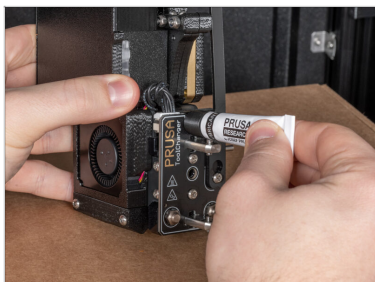


help.prusa3d.com/g636777

Scan the QR code to
display the latest
version of this
chapter.



STEP 1 Introduction



◆ This guide will take you through the lubricating of the **Tool-changer** on the **Original Prusa XL (Multi-tool)**.

ⓘ The following instructions are intended for XL Multi-Tool only.

📌 **Before you start with the printer surgery, download and print the required lubricant applicator *tc_greaser* from [Printables.com](https://www.printables.com).**

How to lubricate the coupler pins on Original Prusa XL (Multi-Tool)

STEP 2 Tools necessary for this chapter




For this chapter, please prepare:

- Prusa lubricant (1x)
- tc_greaser (1x)
- Cardboard box at least 20 x 20 cm to protect the heatbed *Hint: use the original Nextruder box.*
- Cloth or piece of fabric or paper towels to clean the parts.

STEP 3 Parking the Nextruder



- If the tool-changer holds the Nextruder:
- On the xLCD, go to *Control* -> *Pick/Park tool* -> *Park current tool*.
-  Wait for the printer to finish the parking.
- If are all your Nextruders parked, proceed to the next step.

How to lubricate the coupler pins on Original Prusa XL (Multi-Tool)

STEP 4 Preparing the printer



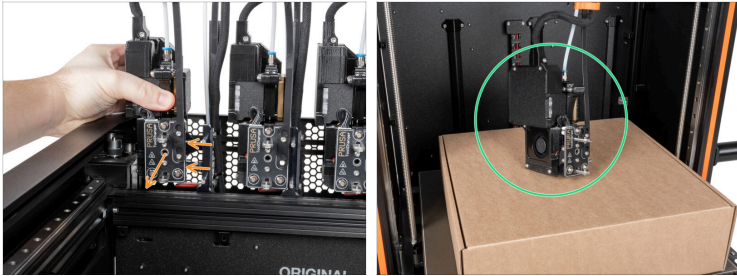
- From the rear side of the printer, turn the power switch OFF (symbol "O").
- Move the tool-changer manually to the front side of the printer.
- To protect the heated bed, place the nextdruder box on it.

STEP 5 Assembling the applicator



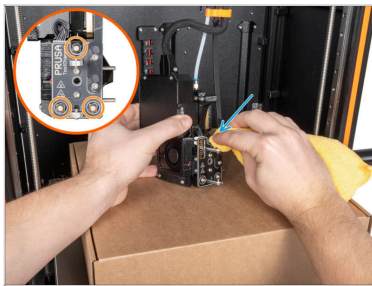
- Open the lubricant by twisting the lid and turning it 180°. Press the lid through the metal seal to open the lubricant.
- Attach the tc_greaser to the Prusa lubricant. Turn clockwise to secure.
- Try to squeeze it a little, the lubricant should come out through the holes in the inside of the tc_greaser.

STEP 6 Detaching the Nextruder



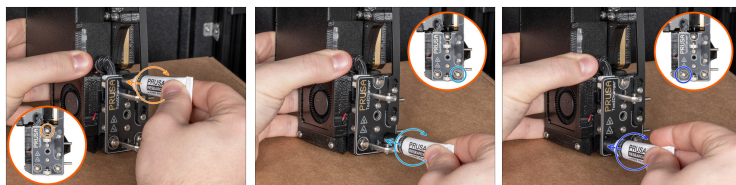
- Gently remove the selected Nextruder from the dock.
- Place the Nextruder on a box on the heatbed.

STEP 7 Cleaning the coupler screws



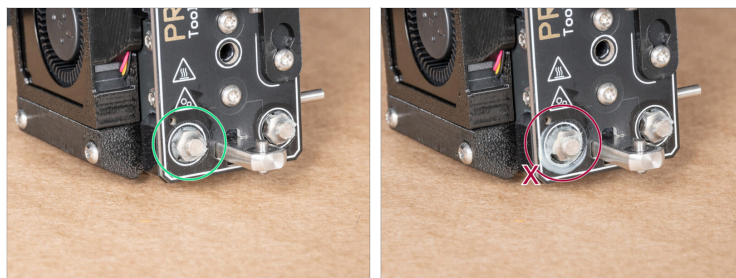
- On the tool-changer, locate 3 coupler screws.
- Using a cloth or paper towel, clean all coupler screws.

STEP 8 Lubricating the coupler screws



- Take the lubricant with the applicator.
- Lubricate the upper screw by applying the lubricant and gently squeezing the lubricant. After squeezing, rotate the applicator to ensure even distribution of the lubricant.
- Repeat the same process for the lower right screw.
- Repeat the same process for the lower left screw.

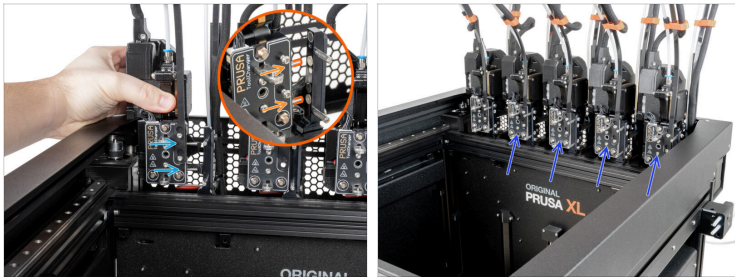
STEP 9 Checking the grease



- Visually check lubricant levels on each screw, ensuring sufficient coverage. Refer to the provided pictures for comparison.
- Pay attention to the screws specifically, avoiding excess application on other parts!**
- Use a paper towel to thoroughly clean grease from the area around the screws.

How to lubricate the coupler pins on Original Prusa XL (Multi-Tool)

STEP 10 Parking the Nextruder



- Take the Nextruder and line up it with the appropriate dock.
- Attach the Nextruder to the dock by sliding two pins into the holes in the dock.
- ⚠️ Ensure, the Nextruder is parked correctly.**
- Proceed with these steps sequentially for the remaining Nextruders.

STEP 11 That's it



- Remove the cardboard box from the heatbed.
- From the rear side of the printer, turn the power switch ON (symbol "I").
- Good job!** You successfully lubricate all tool-changers on your printer.
