

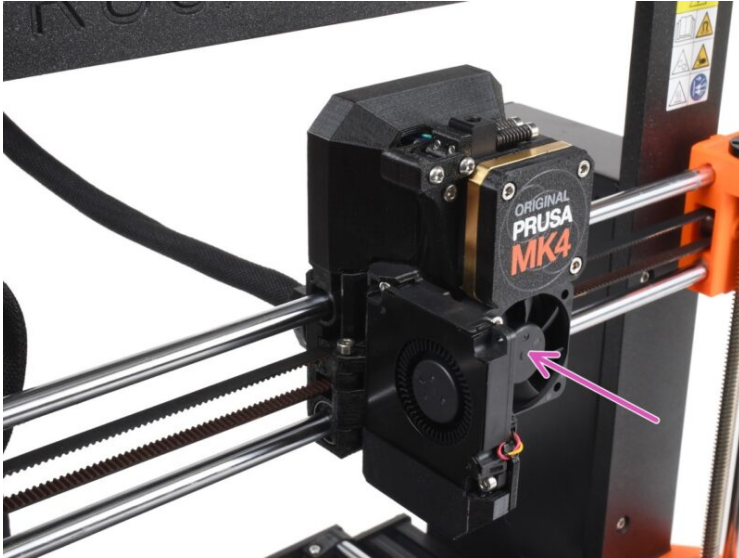
Table of Contents

How to replace a hotend fan (MK4 / MK3.9) ..

3

Step 1 - Introduction	4
Step 2 - Tools necessary for this chapter	4
Step 3 - Preparation	5
Step 4 - Disconnecting the cables	5
Step 5 - Removing the cables	6
Step 6 - Hotend fan parts preparation	6
Step 7 - Attaching the hotend fan	7
Step 8 - Connecting the cables	8
Step 9 - Finishing the fan installation	9

How to replace a hotend fan (MK4 / MK3.9)

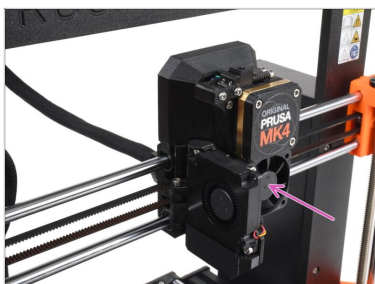


help.prusa3d.com/g637579

Scan the QR code to display the latest version of this chapter.

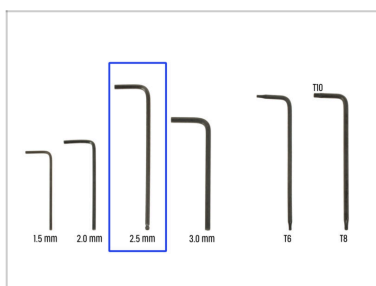


STEP 1 Introduction



- ◆ This guide will take you through the Hotend fan replacement on your Original Prusa MK4 or MK3.9.
- ◆ All necessary parts are available in our eshop [prusa3d.com](https://eshop.prusa3d.com).
- ⓘ Note that you have to be logged in to have access to the spare parts section.

STEP 2 Tools necessary for this chapter



- ◆ **For this chapter, please prepare:**
- ◆ 2.5mm Allen key

STEP 3 Preparation



- ◆ Before you start, make sure the extruder on your printer is in the middle of both the X and Z axes.
- ◆ Power off your printer and disconnect it from the power.

STEP 4 Disconnecting the cables



- ◆ Remove the loveboard cover on the extruder by lifting it up.
 - ◆ Disconnect the print fan, heater thermistor and heater cables.
- ⚠ Note there is a small safety latch on each connector, which must be pushed in, while you pull the connector out, in order to disconnect it.**

STEP 5 Removing the cables



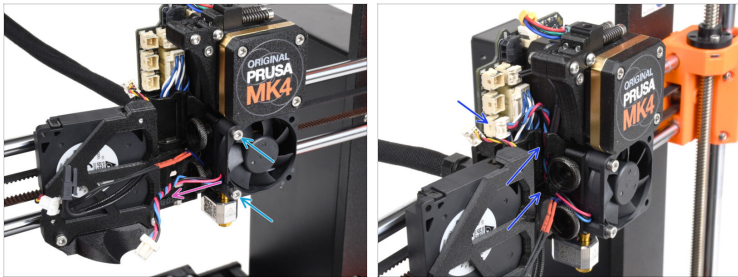
- 🟠 Open up the print fan.
- 🟡 Remove the hotend thermistor and heater cables from the cable groove in the x-carriage.
- 🟣 Disconnect the hotend fan cable and pull it out of the cable groove.
- 🟢 Remove the two M3x18 screws holding the hotend fan and remove the fan.

STEP 6 Hotend fan parts preparation



- ⬛ **For the following steps, please prepare:**
- 🟢 Hotend fan (1x)
- 📄 **i** Can be obtained on Prusa E-shop

STEP 7 Attaching the hotend fan



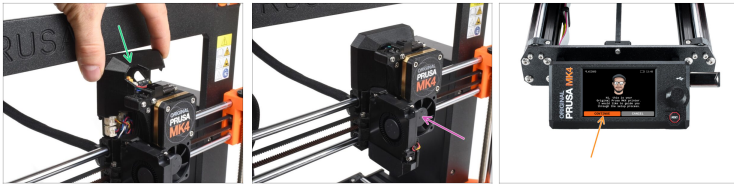
- Attach the hotend fan to the heatsink using two M3x18 screws.
- Make sure the cable is pointing to the left.
- Guide the **hotend fan** cable through the groove in the x-carriage and plug it to the corresponding connector on the **lower left** part of the Loveboard.

STEP 8 Connecting the cables



- ◆ Guide the heater thermistor cable through the channel in the x-carriage and plug it to the corresponding connector on the Loveboard.
- ◆ Guide the heater cable through the channel in the x-carriage and plug it to the corresponding connector on the Loveboard.
- ⚠ **Make sure none of the cables is protruding out of the cable groove in the X-carriage. Otherwise, the print fan won't close. You can use the Allen key to gently push the cables in.**
- ◆ Close the print fan and plug it to the corresponding connector on the Loveboard.

STEP 9 Finishing the fan installation



- ◆ Cover the extruder with the Loveboard cover on top. Make sure none of the cables gets pinched.
- ◆ The fan replacement is finished. Verify your extruder is assembled as seen in the picture.
- ◆ To test out the fan functionality, visit the menu **Control > Calibrations & Tests > Fan test**.
