

Table of Contents

Packing the XL Enclosure for return - Original

Packing material	3
Step 1 - Introduction	4
Step 2 - Before you get started	5
Step 3 - Original packing material	6
Step 4 - Profiles & Steel Sheets box - First part	7
Step 5 - Profiles & Steel Sheets box - Second part	7
Step 6 - Bellows set box	8
Step 7 - Clear Plastic Sheets box - First part	8
Step 8 - Clear Plastic Sheets box - Second part	9
Step 9 - Fasteners & Accessories box	9
Step 10 - Packing layer by layer	10
Step 11 - Sealing the box	11
Step 12 - All done!	12

Packing the XL Enclosure for return - Original Packing material



help.prusa3d.com/g701946

Scan the QR code to
display the latest
version of this
chapter.



STEP 1 Introduction



- ◆ This guide will outline how to prepare and pack down your Original Prusa XL Enclosure for return or repair using the packing material we supplied with it.
- ⓘ Be sure to read each step carefully! Colors on the Hexagon bullet points correspond to markers in the photos.

STEP 2 Before you get started



- ◆ Contact us using following channels:
 - ◆ Using our 24/7 live chat at shop.prusa3d.com
 - ◆ Writing an email to info@prusa3d.com
- ⓘ Before you start packing it down, get out your phone or camera and take pictures of the Enclosure before and during the packing process.
- ◆ Make sure the Serial Number sticker is present in the place indicated. If it is not present, please contact support right away.

STEP 3 Original packing material



- Here we will outline the required packing material:
- Black packing foil
- Fragile sticker - Can be downloaded [here](#).
- Packing tape
- ⓘ You will also need the original boxes and padding.

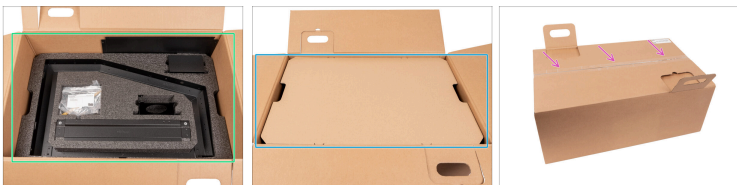
material

STEP 4 Profiles & Steel Sheets box - First part



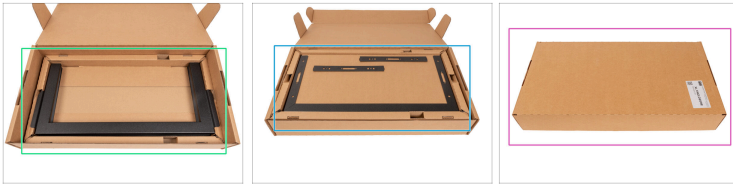
- On the bottom of the Profiles & Steel Sheets box place the back panel on the box padding.
- As the first layer, place the same padding as in the picture, filled with metal sheets.
- Make sure that the top right corner is empty. This space will be filled with the second layer.

STEP 5 Profiles & Steel Sheets box - Second part



- As the second layer, place the same padding as in the picture, filled with metal sheets.
- Place the cardboard & foam padding layer on top of the second layer to prevent movement and damage to the parts during transport.
- Close the Profiles & Steel Sheets box and secure it with the packing tape.
- Leave the box now, let's pack the other parts.

STEP 6 Bellows set box



- ◆ Place the bellows in the bottom of the Bellows set box.
- ◆ Pack the Lower bellows holder and Upper magnet covers on top of the Bellows set box.
- ⓘ You can use the packing tape to secure the box and prevent it from being opened.
- ◆ Close the box.

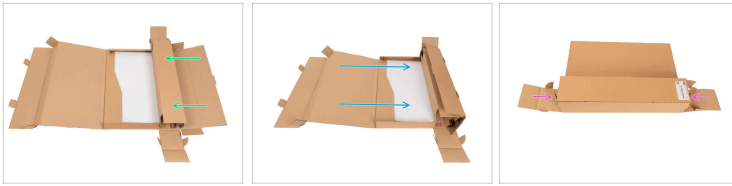
STEP 7 Clear Plastic Sheets box - First part



- ◆ Place the front panel on the Clear Plastic Sheets box.
- ⓘ **To prevent the panels from being scratched**, place a few sheets of paper or bubble wrap between the plastic panels.
- ◆ Place the remaining panels (both side panels + top panel) on the front panel.
- ◆ Secure the sheets with folded cardboard from the left and right sides.

material

STEP 8 Clear Plastic Sheets box - Second part



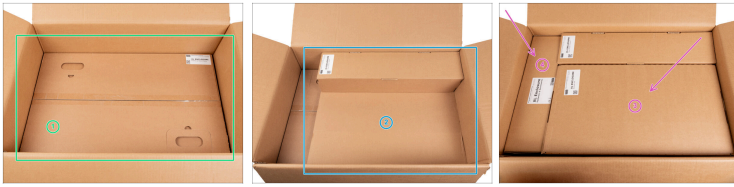
- ◆ Fold the right side of the box.
- ◆ Fold the left side of the box.
- ◆ Fold and close the both sides of the Clear Plastic Sheets box.
- ⓘ You can use the packing tape to secure the box and prevent it from being opened.
- ◆ Leave the box now, let's pack the other parts.

STEP 9 Fasteners & Accessories box



- ◆ Pack all the fasteners and additional parts of the XL Enclosure in a smaller cardboard box named **XL Enclosure Fasteners & Accessories** that will fit within the Enclosure box.
- ⓘ You can use the packing tape to secure the box and prevent it from being opened.
- ◆ Close the box.

STEP 10 Packing layer by layer



- As a first layer, place the **Profiles & Steel Sheets box** into the Original XL Enclosure box.
- As a second layer, place the **Clear Plastic Sheet box** inside the Original XL Enclosure box. Look at the picture.
- Now place the **Bellows set box** and the **Fasteners & Accessories box** inside the Original XL Enclosure box. Look at the picture.

STEP 11 Sealing the box



- i** Before sealing the box make sure you have documented the packing process, sent it to our shipping department, and received approval!
- !** **Damage that occurs to unapproved shipments is liable to be covered to the sender.**
- Close the Original Prusa XL Enclosure box and secure it with the packing tape.
- Wrap the box up in plastic foil (cling film) to make it more sturdy and protect it from any water damage.
- Place the "Fragile" sticker on at least two sides of the box.

STEP 12 All done!



That is all for the packing process! Proceed with emailing our shipping department, providing pictures of the packing process and the service list.

i You can contact the shipping department by either replying to their initial email or just emailing info@prusa3d.com.

Once the packing process has been approved, you will receive a shipping label for the return.
