

Table of Contents

How to install the Camera dummy module

(HT90)	3
Step 1 - Introduction	4
Step 2 - Tools necessary for this chapter	5
Step 3 - Preparing the printer	6
Step 4 - Door opening stopper releasing	7
Step 5 - Door opening stopper removing	7
Step 6 - Lid opening	8
Step 7 - Camera module removing	8
Step 8 - Camera dummy module: parts preparation	9
Step 9 - Camera dummy module installing	9
Step 10 - Camera dummy module securing	10
Step 11 - Lid closing	10
Step 12 - Door opening stopper securing	11
Step 13 - Printer connecting	11
Step 14 - Well done!	12

How to install the Camera dummy module (HT90)

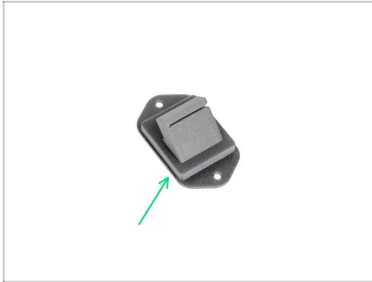


help.prusa3d.com/g790991

Scan the QR code to
display the latest
version of this
chapter.



STEP 1 Introduction



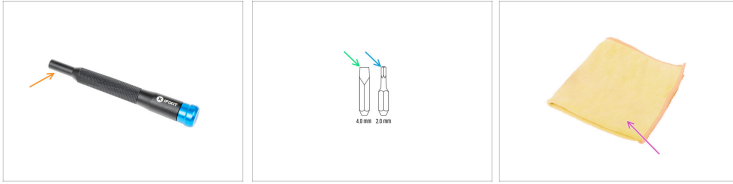
◆ This guide will take you through the installation of the **Camera-dummy-module** on the HT90.

⚠ **Print out the parts before you start assembly.**

◆ The Camera-dummy-module is available at **Printables.com**.

⚠ **Recommended material is PA11CF (for stiffness and durability due to high temperatures in the chamber)**

STEP 2 Tools necessary for this chapter



● **For this chapter, please prepare:**

● Universal screwdriver

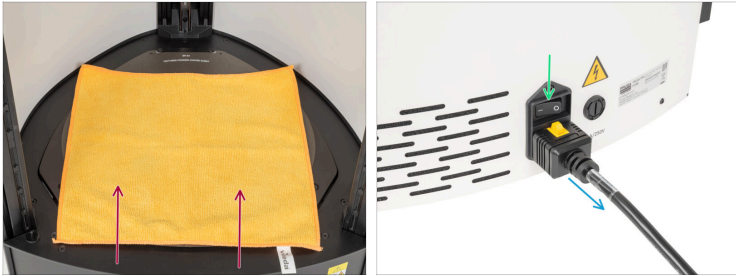
ⓘ Don't have any ? Visit our e-shop Prusa3D.com

● 4.0 mm Flathead screwdriver bit

● 2.0 mm Hex screwdriver bit

● A piece of cloth for use as a heatbed protection during the assembly. *Hint: use the dust cloth.*

STEP 3 Preparing the printer



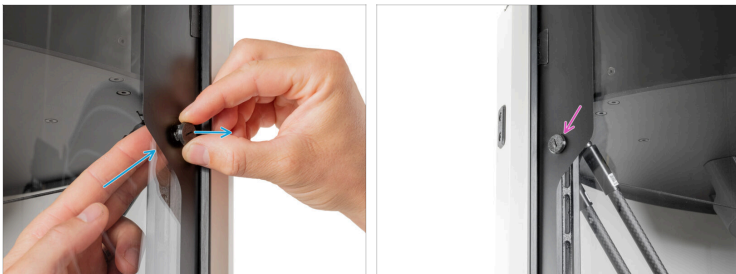
- Before you proceed, it is recommended to protect the heatbed.
- Make sure the heatbed is cooled down to ambient temperature. Place the dust cloth approximately to the front center part of the heatbed.
- Turn the power switch OFF (symbol "O").
- Unplug the power cord from the right side of the printer by pressing the safety latch.

STEP 4 Door opening stopper releasing



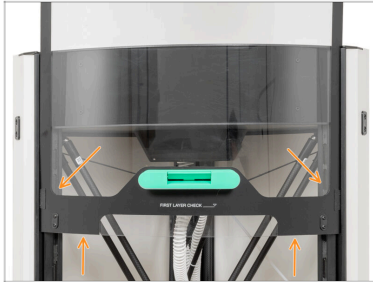
- Open the lid.
- Using a flat screwdriver, loosen the Door-opening-stopper by turning it 120° counter-clockwise.
 - ⓘ The Door-opening-stopper is a printer part, just a slight twist will loosen this part.
- Proceed to the next step.

STEP 5 Door opening stopper removing



- Remove the Door-opening-stopper by pushing from the inside of the printer.
- Repeat the process on the second Door-opening-stopper on the other side of the lid.

STEP 6 Lid opening



- Now slowly pull the lid up to the second step.

STEP 7 Camera module removing



- i** From now on, we will demonstrate the Camera dummy module replacing on the printer without the lid for better visibility. **Please note, do not remove the lid from your printer.** The printer in the pictures will be shown without the lid for improved visualization for the customers.
- Using a 2 mm Allen bit, remove two M3x8b screws from the Camera-module.
- Gently pull out the Camera-module from the panel.
- Gently pull out the black safety latch to release the Camera module cable.
- Leave the Camera module cable hanging for now.

STEP 8 Camera dummy module: parts preparation



- For the next steps, please prepare:
- Camera-dummy-module (1x)
- M3x8b (2x) removed in the previous step





STEP 9 Camera dummy module installing



- Gently slide the Camera module cable facing with a **blue strip towards you** to the Camera-dummy-module.
- Align the Camera module cable with the Camera-dummy-module
- Proceed to the next step.



STEP 10 Camera dummy module securing



-  **Don't pinch the Camera module cable.**
-  Gently insert the Camera-dummy-module into the panel.
-  Secure the Camera-dummy-module with two M3x8b.
-  Good job! The module is installed.

STEP 11 Lid closing



-  **Before pulling down the lid, check that the plastic Door-guide on both sides are inserted into the rails. See at the picture.**
-  Now slowly pull the lid downwards until the plastic cut-outs for the Door-opening-stopper are under the top panel. See the picture.

STEP 12 Door opening stopper securing



- ◆ Using a flat screwdriver, secure the Door-opening-stopper by turning it clockwise.
- ⓘ The Door-opening-stopper is a printer part, just a slight twist will secure this part.
- ◆ Repeat this proces on the left side of the lid.
- ◆ Close the lid

STEP 13 Printer connecting



- ◆ Remove the dust cloth from the bottom.
- ◆ Plug the power cord from on the right side of the printer.
- ◆ Turn the power switch ON (symbol "I").

STEP 14 Well done!



- ◆ The Camera-dummy-module is in place. Happy printing!
