

Tabla de Contenido

How to install the Camera dummy module

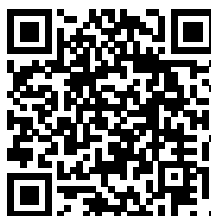
(HT90)	3
Paso 1 - Introduction	4
Paso 2 - Herramientas necesarias para este capitulo	5
Paso 3 - Preparing the printer	6
Paso 4 - Door opening stopper releasing	7
Paso 5 - Door opening stopper removing	7
Paso 6 - Lid opening	8
Paso 7 - Camera module removing	8
Paso 8 - Camera dummy module: parts preparation	9
Paso 9 - Camera dummy module installing	9
Paso 10 - Camera dummy module securing	10
Paso 11 - Lid closing	10
Paso 12 - Door opening stopper securing	11
Paso 13 - Conectando la impresora	11
Paso 14 - ¡Bien hecho!	12

How to install the Camera dummy module (HT90)

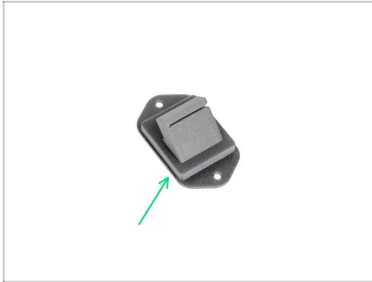


help.prusa3d.com/g790995

Escanea el código QR para ver la última versión de este capítulo.



PASO 1 Introduction



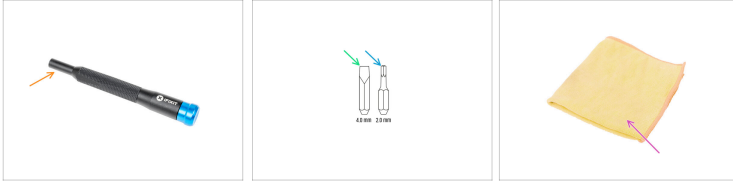
◆ This guide will take you through the installation of the **Camera-dummy-module** on the HT90.

⚠ **Imprime las piezas antes de empezar el montaje.**

◆ The Camera-dummy-module is available is at **Printables.com**.

⚠ **Recommended material is PA11CF (for stiffness and durability due to high temperatures in the chamber)**

PASO 2 Herramientas necesarias para este capítulo



● Para este capítulo, prepara por favor:

● Universal screwdriver

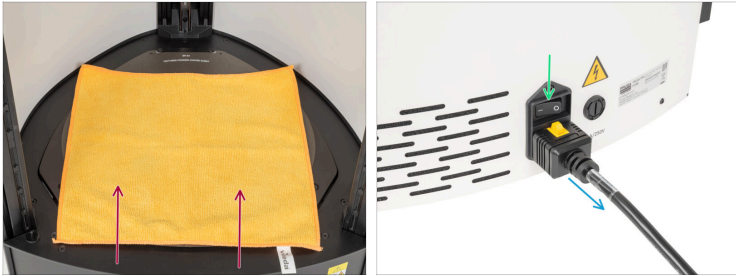
ⓘ Don't have any ? Visit our e-shop Prusa3D.com

● 4.0 mm Flathead screwdriver bit

● 2.0 mm Hex screwdriver bit

● A piece of cloth for use as a heatbed protection during the assembly. *Hint: use the dust cloth.*

PASO 3 Preparing the printer



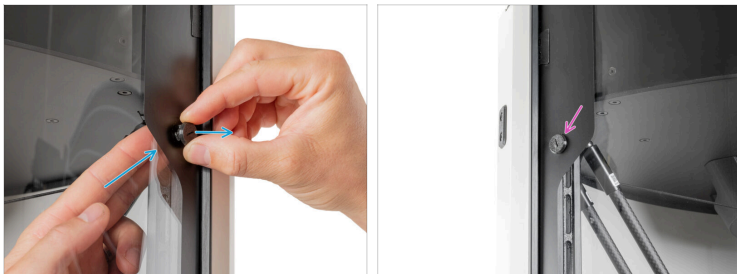
- Antes de continuar, te recomendamos que protejas la base calefactable.
- Make sure the heatbed is cooled down to ambient temperature. Place the dust cloth approximately to the front center part of the heatbed.
- Apaga el interruptor (símbolo "O").
- Unplug the power cord from the right side of the printer by pressing the safety latch.

PASO 4 Door opening stopper releasing



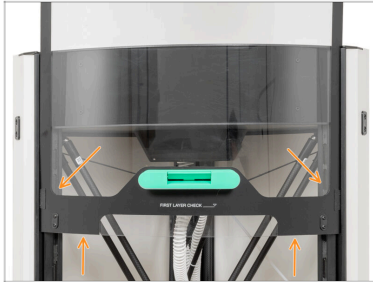
- Open the lid.
- Con un destornillador plano, afloja el Door-opening-stopper girándolo 120° en el sentido contrario a las agujas del reloj.
- ⓘ The Door-opening-stopper is a printer part, just a slight twist will loosen this part.
- Continúa en el siguiente paso.

PASO 5 Door opening stopper removing



- Remove the Door-opening-stopper by pushing from the inside of the printer.
- Repeat the process on the second Door-opening-stopper on the other side of the lid.

PASO 6 Lid opening



- Now slowly pull the lid up to the second step.

PASO 7 Camera module removing



- i** From now on, we will demonstrate the Camera dummy module replacing on the printer without the lid for better visibility. **Please note, do not remove the lid from your printer.** The printer in the pictures will be shown without the lid for improved visualization for the customers.
- Using a 2 mm Allen bit, remove two M3x8b screws from the Camera-module.
- Gently pull out the Camera-module from the panel.
- Gently pull out the black safety latch to release the Camera module cable.
- Leave the Camera module cable hanging for now.

PASO 8 Camera dummy module: parts preparation



- Para los siguientes pasos, por favor prepara:
- Camera-dummy-module (1x)
- M3x8b (2x) *removed in the previous step*





PASO 9 Camera dummy module installing



- Gently slide the Camera module cable facing with a **blue strip towards you** to the Camera-dummy-module.
- Align the Camera module cable with the Camera-dummy-module
- Continúa en el siguiente paso.



PASO 10 Camera dummy module securing



-  **Don't pinch the Camera module cable.**
-  Gently insert the Camera-dummy-module into the panel.
-  Secure the Camera-dummy-module with two M3x8b.
-  Good job! The module is installed.

PASO 11 Lid closing



-  **Before pulling down the lid, check that the plastic Door-guide on both sides are inserted into the rails. See at the picture.**
-  Now slowly pull the lid downwards until the plastic cut-outs for the Door-opening-stopper are under the top panel. See the picture.

PASO 12 Door opening stopper securing



- Using a flat screwdriver, secure the Door-opening-stopper by turning it clockwise.
- ⓘ The Door-opening-stopper is a printer part, just a slight twist will secure this part.
- Repeat this proces on the left side of the lid.
- Close the lid

PASO 13 Conectando la impresora



- Retira el paño antipolvo de la parte inferior.
- Plug the power cord from on the right side of the printer.
- Enciende el interruptor (símbolo "I").

PASO 14 ¡Bien hecho!



- ◆ The Camera-dummy-module is in place. Happy printing!
