

Tabla de Contenido

| | |
|--|----|
| How to change the xLCD (XL) | 3 |
| Paso 1 - Introduction | 4 |
| Paso 2 - Herramientas necesarias para este capitulo | 4 |
| Paso 3 - Printer preparing | 5 |
| Paso 4 - Removing the xLCD | 5 |
| Paso 5 - xLCD assembly versions | 6 |
| Paso 6 - Versión A: Cables del xLCD | 6 |
| Paso 7 - Versión B: Cables del xLCD | 7 |
| Paso 8 - Version C: xLCD cables | 7 |
| Paso 9 - xLCD: parts preparation | 8 |
| Paso 10 - Version A & B: xLCD preparation | 8 |
| Paso 11 - Version A & B: xLCD cables | 9 |
| Paso 12 - Version C: xLCD cables | 10 |
| Paso 13 - xLCD mounting: parts preparation | 11 |
| Paso 14 - Mounting the xLCD | 11 |
| Paso 15 - Final check | 12 |

How to change the xLCD (XL)



help.prusa3d.com/g793759

Escanea el código
QR para ver la última
versión de este
capítulo.

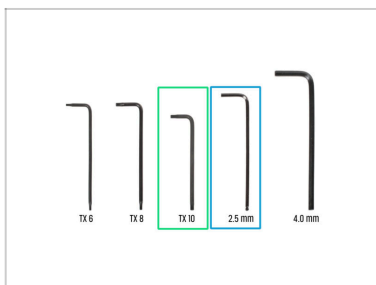


PASO 1 Introduction



- ◆ This guide will take you through the replacement of the **xLCD assembly** on the **Original Prusa XL**.
- ⓘ The following instructions are compatible with all Prusa XL printers.
- ◆ Todas las piezas necesarias están disponibles en nuestra tienda prusa3d.com.
- ⓘ Ten en cuenta que debes iniciar sesión para tener acceso a la sección de repuestos.

PASO 2 Herramientas necesarias para este capítulo



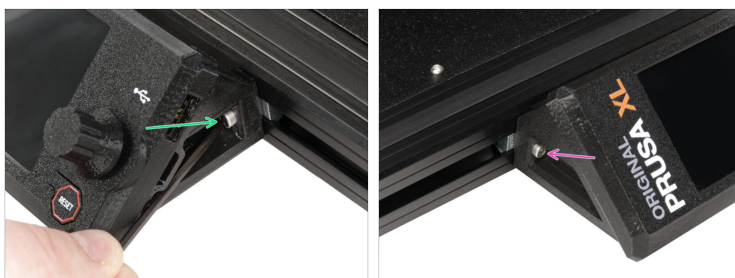
- ◆ **Para este capítulo, prepara por favor:**
- ◆ T10 Torx key
- ◆ 2.5mm Allen key

PASO 3 Printer preparing



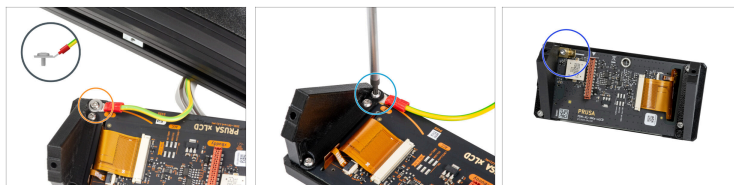
- On the back of your printer. Turn the power switch OFF (symbol "O").

PASO 4 Removing the xLCD



- From the front of the printer:
- Remove the M3x10 (M3x16) screw from the right side of the xLCD.
- Remove the M3x10 (M3x16) screw from the left side of the xLCD.

PASO 5 xLCD assembly versions



⚠ Echa un vistazo al xLCD, hay tres variantes:

- 🟠 **Version A:** with an M3 washer under the screw
- 🟢 **Version B:** without the washer under the screw
- 🟠 **Version C:** faston on the top left (injection molded xLCD)

🟠 Scroll to your version.

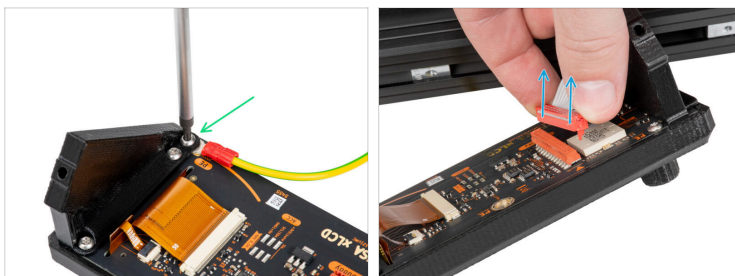
PASO 6 Versión A: Cables del xLCD



📘 If you have a different version, skip to the next step.

- 🟢 Disconnect the xLCD cable from the slot on the xLCD board.
- 🟠 Remove the M3x8rT screw and the M3 washer using a T10 Torx key.

PASO 7 Versión B: Cables del xLCD



- ① If you have a different version, skip to the next step.
- Remove the M3x8rT screw.
- Disconnect the xLCD cable from the slot on the xLCD board.

PASO 8 Version C: xLCD cables



- ① If you have an injection molded xLCD, use this procedure to remove the cables.
- Remove the earthing connector fully from the PE faston.
- Disconnect the xLCD cable from the slot on the xLCD board.

PASO 9 xLCD: parts preparation



● **Para los siguientes pasos, por favor prepara:**

● xLCD assembly (1x)

ⓘ **Version A & B:** continue to the next step.

ⓘ **Version C:** continue to the **Version C: xLCD cables**

PASO 10 Version A & B: xLCD preparation



● From the back side of the xLCD assembly:

● Using a T10 Torx key, remove the 3x8sT and the PE faston from the xLCD. **Keep the screw for the next steps.**

PASO 11 Version A & B: xLCD cables



- ◆ From the front of the printer, place the xLCD assembly close to the lower front aluminum extrusion where are the xLCD cables.
- ◆ Using the 3x8sT screw, connect the PE cable to the PE hole on the xLCD board. See the detail showing the correct position of the cable connector.
 - ⓘ The connector will bend slightly when tightened. Don't worry, it's fine.
- ◆ Conecta el cable xLCD a la ranura de la placa xLCD.
 - ⓘ Hay una pestaña en el conector del cable xLCD, que debe estar orientado hacia el símbolo del triángulo en la placa. Mira el detalle.
- ◆ Push the xLCD cable connector to fully connect to the xLCD.

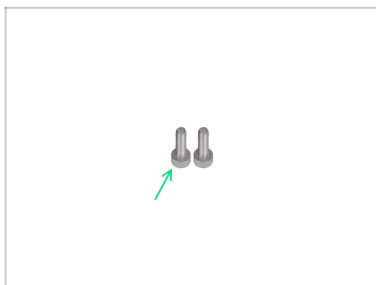
PASO 12 Version C: xLCD cables



- ◆ From the front of the printer, place the xLCD assembly close to the lower front aluminum extrusion where are the xLCD cables.
- ◆ Conecta el cable xLCD a la ranura de la placa xLCD.
- ⓘ Hay una pestaña en el conector del cable xLCD, que debe estar orientado hacia el símbolo del triángulo en la placa. Mira la imagen.
- ◆ Empuja el conector del cable del xLCD para conectarlo completamente al xLCD. Sujeta la cubierta del xLCD.
- ◆ Introduce a fondo el conector de toma de tierra en el cierre de PE.

How to change the xLCD (XL)

PASO 13 xLCD mounting: parts preparation



● Para los siguientes pasos, por favor prepara:

● M3x10 screw (2x)

PASO 14 Mounting the xLCD



- Alinea el conjunto xLCD con las tuercas de la extrusión de aluminio frontal.
- Insert and tighten the M3x10 (M3x16) screw from the left side of the xLCD.
- Insert and tighten the M3x10 (M3x16) screw from the left side of the xLCD.
- Good job! The xLCD is ready.

How to change the xLCD (XL)

PASO 15 Final check



- On the back of your printer. Turn the power switch ON (symbol "I").
- Try the control wheel if everything works.
