

Table of Contents

How to replace the door (HT90)	3
Step 1 - Introduction	4
Step 2 - Tools necessary for this chapter	5
Step 3 - Door opening stopper releasing	6
Step 4 - Door opening stopper removing	6
Step 5 - Releasing the spring rod	7
Step 6 - Releasing the Spring Guides	8
Step 7 - Removing the handle	9
Step 8 - Removing the door panel	9
Step 9 - New door panel: parts preparation	10
Step 10 - Lid closing	10
Step 11 - Door opening stopper securing	11
Step 12 - Installing the handle	12
Step 13 - Spring guides: parts preparation	13
Step 14 - Installing the Spring Guides	14
Step 15 - Inserting the Spring rod	15
Step 16 - That's it	16

How to replace the door (HT90)



help.prusa3d.com/g818719

Scan the QR code to
display the latest
version of this
chapter.



STEP 1 Introduction



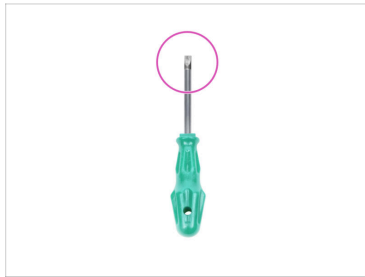
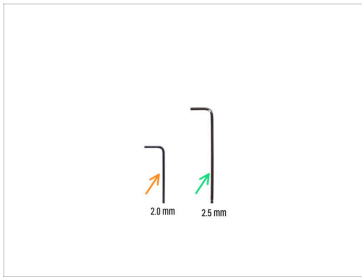
◆ This guide will take you through the replacement of the **door panel** on the **Prusa Pro HT90**.

⚠ **CAUTION: Handle the Printer and Its Components with Care!**

⚠ The printer is heavy. Seek assistance to lift or move it and avoid injury or damage safely.

⚠ Do not discard any parts unless instructed to do so.

STEP 2 Tools necessary for this chapter



◆ **For this guide, please prepare:**

◆ 2.0 mm Allen key

◆ 2.5 mm Allen key

◆ Flat screwdriver

ⓘ Tools are not included in the replacement package.

STEP 3 Door opening stopper releasing



- ◆ Open the lid.
- ◆ Using a flat screwdriver, loosen and remove the Door-opening-stopper by turning it 120° counter-clockwise.
- ⓘ The Door-opening-stopper is a printed part, just a slight twist will loosen this part.

STEP 4 Door opening stopper removing



- ◆ Remove the Door-opening-stopper by pushing from the inside of the printer.
- ◆ Repeat the process on the second Door-opening-stopper on the other side of the lid.

STEP 5 Releasing the spring rod



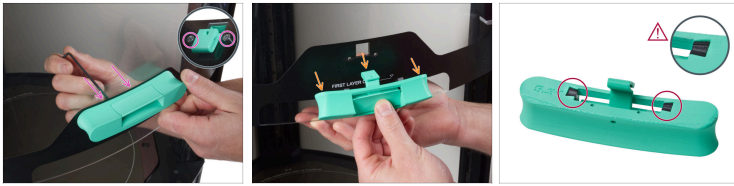
- ◆ Press the handle lever to the **middle position**.
- ◆ Maintain the handle lever in this position.
- ◆ From the inside of the printer, pull the spring rod out of the handle.
- ⓘ If the spring rod cannot be pulled out, try a different lever position.
- ◆ Slide the Spring rod out of the Spring Guide on both sides of the door.
- ⓘ The rod can be bent quite a lot to remove it carefully.
- ◆ Remove the Spring rod from the printer.

STEP 6 Releasing the Spring Guides



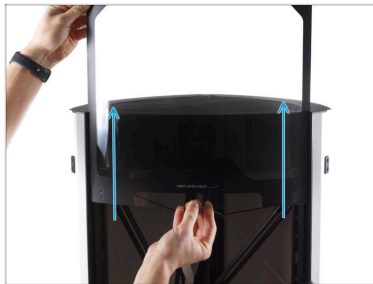
- ◆ Release and remove two M3x12r screws with the plastic pad from the right side of the door.
 - ◆ Release and remove two M3x12r screws with the plastic pad from the left side of the door.
 - ◆ Carefully slide the door upwards.
 - ◆ You will have two plastic parts left in place: Spring Guides.
- ⚠ **It is important to keep the position of the left and right sides. Do not replace them for later reassembly.**
- ⓘ We recommend leaving them in place for the duration of the procedure.

STEP 7 Removing the handle



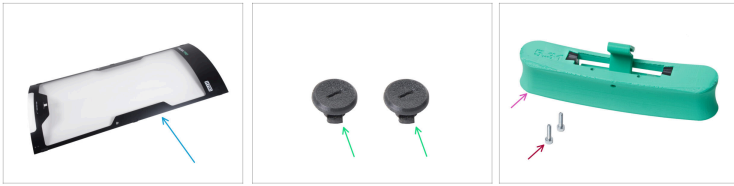
- ◆ From the inside of the printer, remove two M3x12 screw securing the handle.
- ◆ Remove the handle assembly from the printer.
- ⚠ After removing the handle, **check that it has two black parts.**
 - ◆ The two black parts must be aligned with the handle's surface.

STEP 8 Removing the door panel



- ◆ Very carefully slide the door panel up completely out of the printer.
- ◆ Put this door panel aside, you will no longer need it.

STEP 9 New door panel: parts preparation



⬛ For the following steps, please prepare:

- 🔵 New door panel (1x)
- 🟢 Door-opening-stopper (2x) *you removed earlier*
- 🟡 Door handle assembly (1x) *you removed earlier*
- 🟠 M3x12 screw (2x) *you removed earlier*

STEP 10 Lid closing



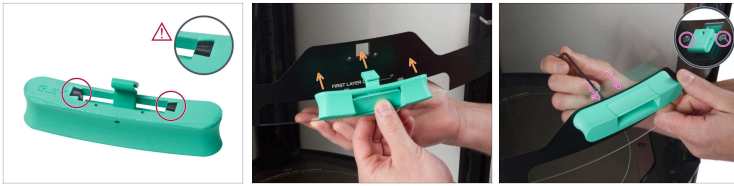
- ⚠️ Before pulling down the lid, check that the plastic Door-guide on both sides are inserted into the rails. See at the picture.
- 🔵 Now slowly pull the lid downwards until the plastic cut-outs for the Door-opening-stopper are under the top panel. See the picture.

STEP 11 Door opening stopper securing



- ◆ Using a flat screwdriver, secure the Door-opening-stopper by turning it clockwise.
- ⓘ The Door-opening-stopper is a printed part, just a slight twist will secure this part.
- ◆ Repeat this proces on the left side of the lid.

STEP 12 Installing the handle

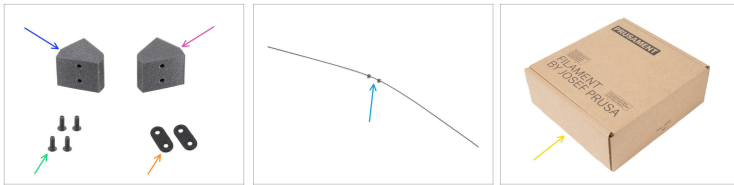


⚠ Ensure that both black plastic parts are securely positioned in the handle.

- The two black parts must be perfectly flush with the handle's surface.
- Attach the handle to the door. Ensure the correct position of the part.
- From the inside of the printer, secure the handle using two M3x12 screws.

⚠ Do not extremely overtighten the screws, it may damage the door panel.

STEP 13 Spring guides: parts preparation



◆ **For the following steps, please prepare:**

◆ Spring-guide-left (1x) *you removed earlier*

◆ Spring-guide-right (1x) *you removed earlier*



These parts are not identical; they are mirrored.
Carefully check the picture to identify the left
and right part.

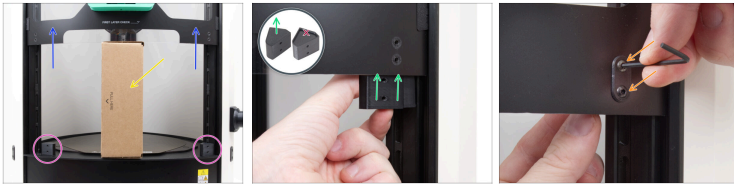
◆ M3x12r screw (4x) *you removed earlier*

◆ Screw-pad (2x) *you removed earlier*

◆ Spring Rod assembly (1x) *you removed earlier*

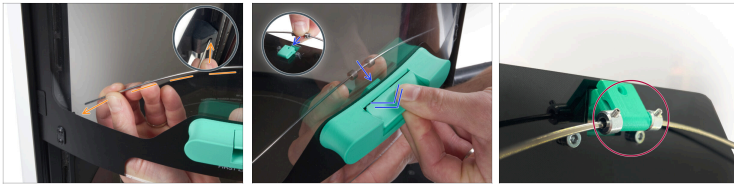
◆ Empty cardboard box e.g. *Prusament box*

STEP 14 Installing the Spring Guides



- ◆ Lift the door up.
- ◆ Place the cardboard box on its side beneath the door to provide better access to the printer. And put the door on the box.
- ◆ Make sure both Spring Guides are still in place.
- ◆ From the inside, attach the Spring-guide-left to the holes in the door panel. **The side of the part without the "pocket" must point upwards.**
- ◆ Line up the holes of both parts and secure it with two M3x12r screws and Screw-pad.
 - ⚠ **Do not overtighten the screws, it may damage the door panel.**
- ◆ Use the same procedure with the Spring-guide-right.

STEP 15 Inserting the Spring rod



- ◆ Insert one end of the Spring Rod into the left Spring-guide-left.
 - ⓘ To insert, the rod must be bent slightly. Don't worry, it is flexible and its shape will return to its original state.
- ◆ In the same way, insert the rod to the Spring-guide-right.
- ◆ Push the handle lever to the middle position and insert the center part of the Spring Rod into the handle hook.
- ◆ Ensure the rod is seated properly. (inside view)
 - ⓘ The rod must be seated at the bottom of the hook.

STEP 16 That's it



- **Remove the cardboard box.**
- To test that everything is installed correctly, try extending the door to more than one position.
- Everything's fine? **Congratulations!** You've successfully replaced the HT90 door assembly.
