

# Tabla de Contenido

<b>How to replace the door (HT90)</b> .....	3
Paso 1 - Introduction .....	4
Paso 2 - Herramientas necesarias para este capitulo .....	5
Paso 3 - Door opening stopper releasing .....	6
Paso 4 - Door opening stopper removing .....	6
Paso 5 - Releasing the spring rod .....	7
Paso 6 - Releasing the Spring Guides .....	8
Paso 7 - Removing the handle .....	9
Paso 8 - Retirando el panel de la puerta. ....	9
Paso 9 - New door panel: parts preparation .....	10
Paso 10 - Lid closing .....	10
Paso 11 - Door opening stopper securing .....	11
Paso 12 - Installing the handle .....	12
Paso 13 - Spring guides: parts preparation .....	13
Paso 14 - Installing the Spring Guides .....	14
Paso 15 - Inserting the Spring rod .....	15
Paso 16 - That's it .....	16



# How to replace the door (HT90)



[help.prusa3d.com/g818723](https://help.prusa3d.com/g818723)

Escanea el código  
QR para ver la última  
versión de este  
capítulo.



## PASO 1 Introduction



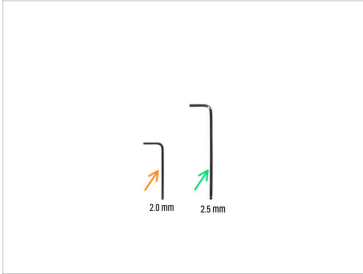
◆ This guide will take you through the replacement of the **door panel** on the **Prusa Pro HT90**.

⚠ **CAUTION: Handle the Printer and Its Components with Care!**

⚠ The printer is heavy. Seek assistance to lift or move it and avoid injury or damage safely.

⚠ Do not discard any parts unless instructed to do so.

## PASO 2 Herramientas necesarias para este capítulo



● **Para esta guía, prepara:**

● Llave Allen de 2.0 mm

● Llave Allen de 2.5 mm

● Flat screwdriver

ⓘ Tools are not included in the replacement package.

### PASO 3 Door opening stopper releasing



- ◆ Open the lid.
- ◆ Using a flat screwdriver, loosen and remove the Door-opening-stopper by turning it 120° counter-clockwise.
- ⓘ The Door-opening-stopper is a printed part, just a slight twist will loosen this part.

### PASO 4 Door opening stopper removing



- ◆ Remove the Door-opening-stopper by pushing from the inside of the printer.
- ◆ Repeat the process on the second Door-opening-stopper on the other side of the lid.

## PASO 5 Releasing the spring rod



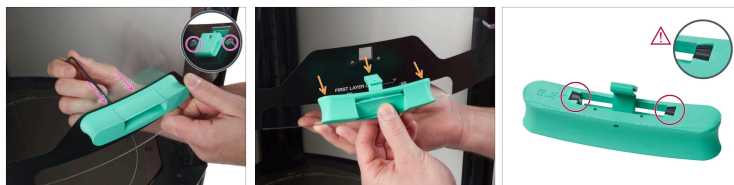
- ◆ Press the handle lever to the **middle position**.
- ◆ Maintain the handle lever in this position.
- ◆ From the inside of the printer, pull the spring rod out of the handle.
- ⓘ If the spring rod cannot be pulled out, try a different lever position.
- ◆ Slide the Spring rod out of the Spring Guide on both sides of the door.
- ⓘ The rod can be bent quite a lot to remove it carefully.
- ◆ Remove the Spring rod from the printer.

## PASO 6 Releasing the Spring Guides



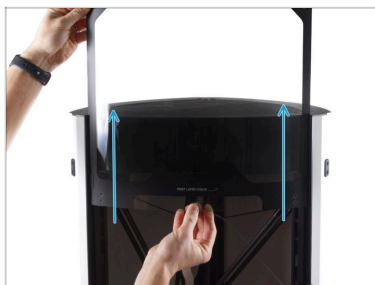
- ◆ Release and remove two M3x12r screws with the plastic pad from the right side of the door.
  - ◆ Release and remove two M3x12r screws with the plastic pad from the left side of the door.
  - ◆ Carefully slide the door upwards.
  - ◆ You will have two plastic parts left in place: Spring Guides.
- ⚠ It is important to keep the position of the left and right sides. Do not replace them for later reassembly.**
- i** We recommend leaving them in place for the duration of the procedure.

## PASO 7 Removing the handle



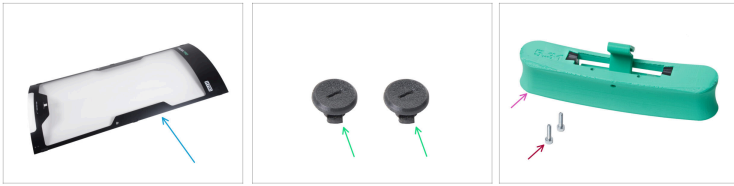
- ◆ From the inside of the printer, remove two M3x12 screw securing the handle.
- ◆ Remove the handle assembly from the printer.
- ⚠ After removing the handle, **check that it has two black parts.**
  - ◆ The two black parts must be aligned with the handle's surface.

## PASO 8 Retirando el panel de la puerta.



- ◆ Very carefully slide the door panel up completely out of the printer.
- ◆ Put this door panel aside, you will no longer need it.

## PASO 9 New door panel: parts preparation



⬛ Para los siguientes pasos, por favor prepara:

- ⬢ New door panel (1x)
- ⬢ Door-opening-stopper (2x) *you removed earlier*
- ⬢ Door handle assembly (1x) *you removed earlier*
- ⬢ M3x12 screw (2x) *you removed earlier*

## PASO 10 Lid closing



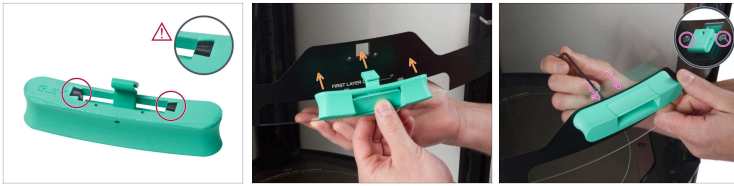
- ⚠ Before pulling down the lid, check that the plastic Door-guide on both sides are inserted into the rails. See at the picture.
- ⬢ Now slowly pull the lid downwards until the plastic cut-outs for the Door-opening-stopper are under the top panel. See the picture.

## PASO 11 Door opening stopper securing



- ◆ Using a flat screwdriver, secure the Door-opening-stopper by turning it clockwise.
- ⓘ The Door-opening-stopper is a printed part, just a slight twist will secure this part.
- ◆ Repeat this proces on the left side of the lid.

## PASO 12 Installing the handle

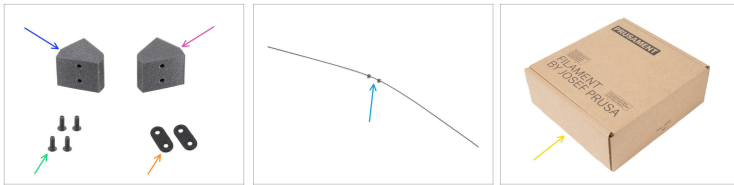


**⚠ Ensure that both black plastic parts are securely positioned in the handle.**

- The two black parts must be perfectly flush with the handle's surface.
- Attach the handle to the door. Ensure the correct position of the part.
- From the inside of the printer, secure the handle using two M3x12 screws.

**⚠ Do not extremely overtighten the screws, it may damage the door panel.**

## PASO 13 Spring guides: parts preparation



❖ **Para los siguientes pasos, por favor prepara:**

❖ Spring-guide-left (1x) *you removed earlier*

❖ Spring-guide-right (1x) *you removed earlier*



**These parts are not identical;** they are mirrored.  
Carefully check the picture to identify the left and right part.

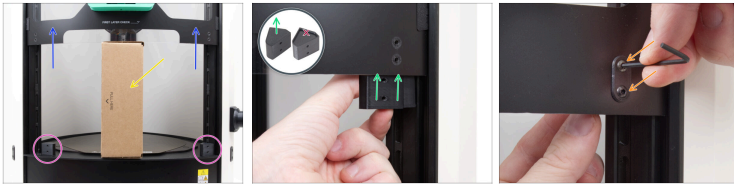
❖ M3x12r screw (4x) *you removed earlier*

❖ Screw-pad (2x) *you removed earlier*

❖ Spring Rod assembly (1x) *you removed earlier*

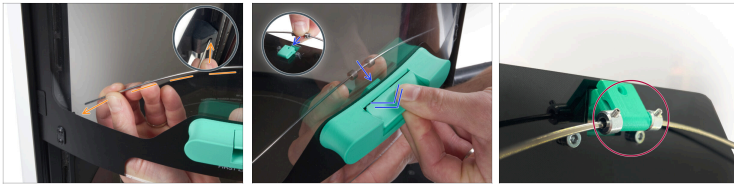
❖ Empty cardboard box e.g. *Prusament box*

## PASO 14 Installing the Spring Guides



- ◆ Lift the door up.
- ◆ Place the cardboard box on its side beneath the door to provide better access to the printer. And put the door on the box.
- ◆ Make sure both Spring Guides are still in place.
- ◆ From the inside, attach the Spring-guide-left to the holes in the door panel. **The side of the part without the "pocket" must point upwards.**
- ◆ Line up the holes of both parts and secure it with two M3x12r screws and Screw-pad.
  - ⚠ **Do not overtighten the screws, it may damage the door panel.**
- ◆ Use the same procedure with the Spring-guide-right.

## PASO 15 Inserting the Spring rod



- ◆ Insert one end of the Spring Rod into the left Spring-guide-left.
  - ⓘ To insert, the rod must be bent slightly. Don't worry, it is flexible and its shape will return to its original state.
- ◆ In the same way, insert the rod to the Spring-guide-right.
- ◆ Push the handle lever to the middle position and insert the center part of the Spring Rod into the handle hook.
- ◆ Ensure the rod is seated properly. (inside view)
  - ⓘ The rod must be seated at the bottom of the hook.

## PASO 16 That's it



- **Remove the cardboard box.**
- To test that everything is installed correctly, try extending the door to more than one position.
- Everything's fine? **Congratulations!** You've successfully replaced the HT90 door assembly.



---

---

---

---

---

---

---

---

---

---



---

---

---

---

---

---

---

---

---

---



---

---

---

---

---

---

---

---

---

---



---

---

---

---

---

---

---

---

---

---