

Table of Contents

How to reverse the door orientation (CORE

One)	3
Step 1 - Introduction	4
Step 2 - Tools necessary for this chapter	4
Step 3 - Removing the door panel	5
Step 4 - Removing the hinges	6
Step 5 - Door magnets: parts preparation	7
Step 6 - Installing the door magnets	7
Step 7 - Door hinges: parts preparation	8
Step 8 - Installing the hinges	9
Step 9 - Door panel: parts preparation	10
Step 10 - Mounting the door panel	11

How to reverse the door orientation (CORE One)



help.prusa3d.com/g828818

Scan the QR code to
display the latest
version of this
chapter.



STEP 1 Introduction

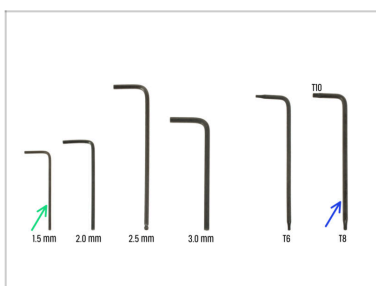


- This guide will walk you through the steps to **reverse the door orientation** on the **Prusa CORE One**.

ⓘ By default, the door on the Prusa CORE One is configured as left-hand.

⚠ **Handle the parts carefully to avoid any damage to the door or printer components.**

STEP 2 Tools necessary for this chapter



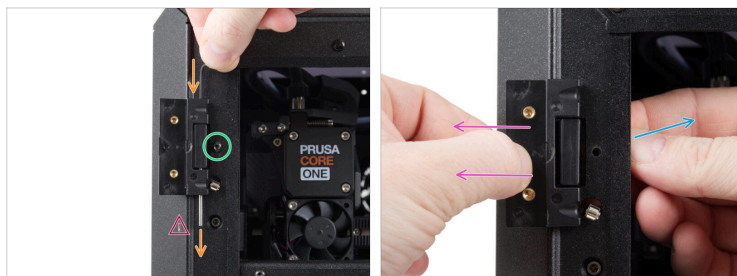
- **For this guide, please prepare:**
- 1.5mm Allen key
- T8-10 Torx key

STEP 3 Removing the door panel



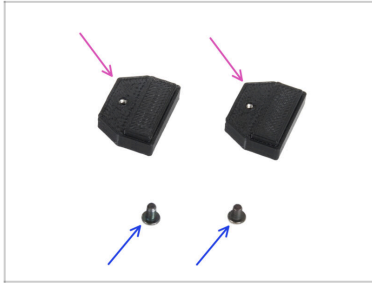
- Open the door widely.
- Using the T10 Torx key, release and remove the screw securing both Door-magnets.
- Remove the Door-magnets (there is a magnet inside the printed part).
- Release and remove two screws securing the door panel in both hinges.
- ⚠ It is essential to **hold the door panel securely while loosening the screws to prevent it from falling.**
- Carefully slide the door panel out of the hinges.
- Place the door panel in a clean and safe area to avoid any damage.

STEP 4 Removing the hinges



- i** This step will demonstrate how to remove the upper Door-hinge. The same procedure applies to the lower Door-hinge.
- 🟠** Using the 1.5mm Allen key, push down the pin in the Door-hinge and remove it.
- ⚠️** Make sure you don't lose the pin. We will use it later on.
- 🟢** Unscrew the screw securing the Door-hinge.
- 🟡** Remove the inner part of the Door-hinge.
- 🟣** Remove the Door-hinge from the printer.
- ⬛** Proceed the same with the lower Door-hinge.

STEP 5 Door magnets: parts preparation



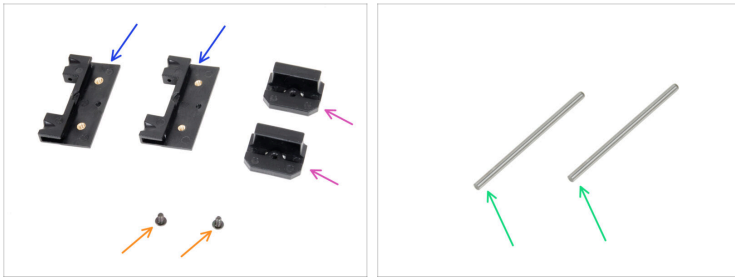
- **For the following steps, please prepare:**
- Door-magnet (2x) *you removed earlier*
- M3xr4T (2x) *you removed earlier*

STEP 6 Installing the door magnets



- Insert the Door-magnet into the upper rectangular hole in the printer frame from the inside.
 - Ensure the part is oriented as shown in the detailed illustration.
- Secure the Door-magnet with the M3x4rT screw, and tighten it firmly.
- Proceed the same with the lower Door-magnet.

STEP 7 Door hinges: parts preparation



◆ **For the following steps, please prepare:**

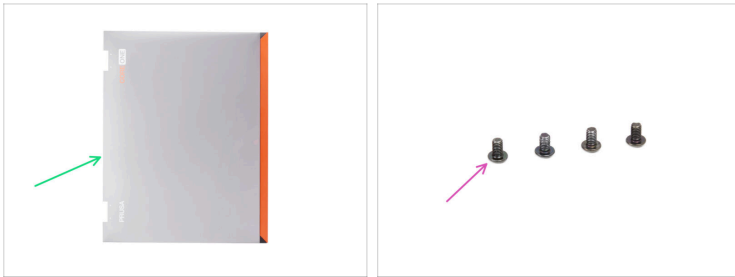
- ◆ Door-hinge-out (2x) *you removed earlier*
- ◆ Door-hinge-in (2x) *you removed earlier*
- ◆ M3x4rT screw (2x) *you removed earlier*
- ◆ Pin 2x40 (2x) *you removed earlier*

STEP 8 Installing the hinges



- ◆ Insert the Door-hinge-in into the upper rectangular hole in the printer frame from the inside.
 - ◆ Ensure the part is oriented as shown in the detailed illustration.
- ◆ Secure the Door-hinge-in with the M3x4rT screw, and tighten firmly.
- ◆ Attach the Door-hinge-out to the Door-hinge-in.
- ◆ Join both parts together by carefully pushing the pin 2x40 into place.
 - ◆ Ensure the hinge parts are properly aligned with each other before inserting the pin.
 - ◆ Use the T8-10 Torx key to fully insert the pin until it is flush.

STEP 9 Door panel: parts preparation



- **For the following steps, please prepare:**
- Door panel (1x) *you removed earlier*
- ⚠ **Handle it carefully, avoid scratching the part.**
- M3x5rT screw (4x) *you removed earlier*

STEP 10 Mounting the door panel



- ◆ Insert the door panel fully into the hinges.
 - ⚠ **Ensure the door panel is oriented correctly, with the handle facing outward. Use the V-shaped cutouts on the inner side of the door handle as a guide.**
- ◆ Insert two M3x5rT screws into each Door-hinge to secure the door panel.
 - ⚠ **Secure the screws gently to avoid over-tightening or damaging the door panel.**
- ◆ **The door has been successfully reversed.** You can now resume normal use of the printer.
