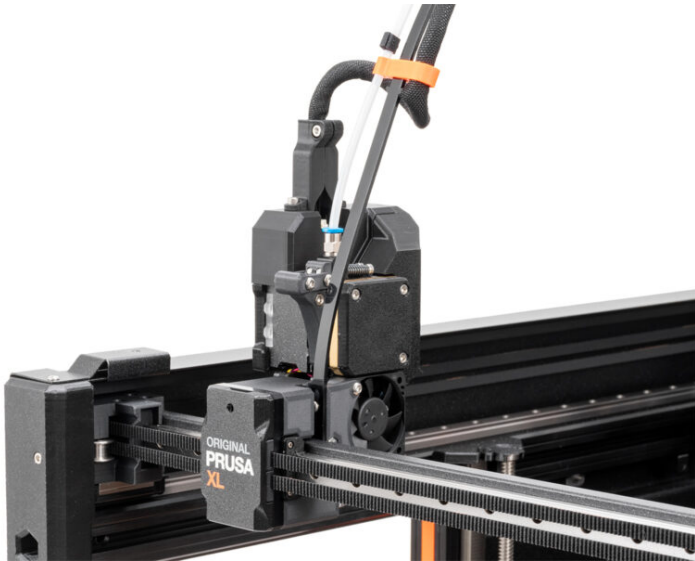


# Table of Contents

<b>How to replace the main cable connector cover (XL)</b> .....	3
Step 1 - Introduction .....	4
Step 2 - Tools necessary for this manual .....	5
Step 3 - Unloading the filament .....	6
Step 4 - Unplugging the printer .....	7
Step 5 - Protecting the heatbed .....	7
Step 6 - Multi-Tool & Single-Tool .....	8
Step 7 - Multi-Tool: disconnecting the Nextruder .....	9
Step 8 - Multi-Tool: Disassembling the Nextruder cable .....	9
Step 9 - Multi-Tool: XL dwarf cover connector: parts preparation .....	10
Step 10 - Multi-Tool: Preparing the XL dwarf cover connector .....	11
Step 11 - Multi-Tool: Reassembling the Nextruder cable .....	12
Step 12 - Multi-Tool: detaching the Nextruder .....	12
Step 13 - Multi-Tool: Disassembling the Nextruder .....	13
Step 14 - Multi-Tool: XL dwarf cover base: parts preparation .....	14
Step 15 - Multi-Tool: Preparing the XL dwarf cover base .....	14
Step 16 - Multi-Tool: Securing the XL dwarf cover base .....	15
Step 17 - Multi-Tool: XL dwarf cover door: parts preparation .....	16
Step 18 - Multi-Tool: XL dwarf cover door securing .....	16
Step 19 - Multi-Tool: docking the Nextruder .....	17
Step 20 - Multi-Tool: securing the cable bundle .....	18
Step 21 - Single-Tool: releasing the Nextruder .....	

.....	19
Step 22 - Single-Tool: detaching the Nextruder	20
Step 23 - Single-Tool: releasing the cable bundle	21
Step 24 - Single-Tool: Disassembling the Nextruder cable	21
Step 25 - Single-Tool: XL dwarf cover connector: parts preparation	22
Step 26 - Single-Tool: Preparing the XL dwarf cover connector	23
Step 27 - Single-Tool: Reassembling the Nextruder cable	24
Step 28 - Single-Tool: Disassembling the Nextruder	25
Step 29 - Single-Tool: XL dwarf cover base: parts preparation	26
Step 30 - Single-Tool: Preparing the XL dwarf cover base	26
Step 31 - Single-Tool: Securing the XL dwarf cover base	27
Step 32 - Single-Tool: XL dwarf cover door: parts preparation	28
Step 33 - Single-Tool: XL dwarf cover door securing	28
Step 34 - Single-Tool: securing the Nextruder cable	29
Step 35 - Single-Tool: securing the cable bundle	29
Step 36 - Single-Tool: securing the Nextruder: parts preparation	30
Step 37 - Single-Tool: installing the Nextruder	31
Step 38 - Good job	31

# How to replace the main cable connector cover (XL)

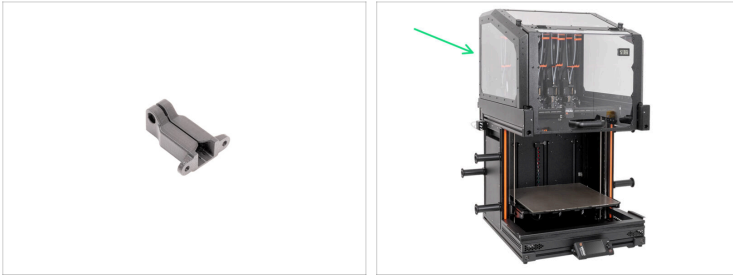


[help.prusa3d.com/g831370](https://help.prusa3d.com/g831370)

Scan the QR code to display the latest version of this chapter.

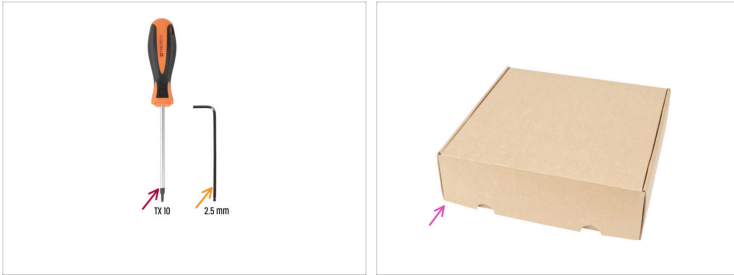


## STEP 1 Introduction



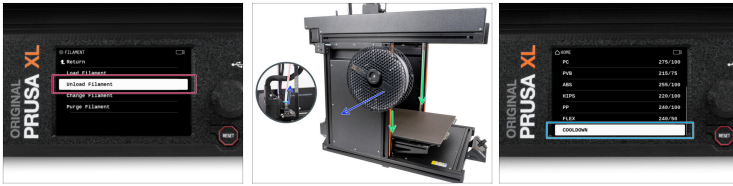
- This guide will take you through the installation of the **Main cable connector cover** on the **Original Prusa XL**.
- ⓘ The following instructions are compatible with Original Prusa XL Multi-Tool and Single-Tool.
- All necessary parts are available on **Printables.com**.
- This manual is compatible with the Original Prusa XL Enclosure.
- ⓘ We will demonstrate replacing the Main cable connector cover on a printer without the XL Enclosure for better visibility. There is no need to remove the XL Enclosure.
- ⚠ **Do not discard any removed parts unless prompted to do so.**

## STEP 2 Tools necessary for this manual



- **For the following manual, please prepare:**
- Torx T10 screwdriver
- 2.5 mm Allen key
- A cardboard box for use as heatbed protection during the assembly. *We will use the Nextruder box as an example.*

## STEP 3 Unloading the filament



- ◆ If you have loaded the filament, unload it from the hotend. On the screen, navigate to *Filament* -> *Unload Filament*.
- ◆ Remove the filament from the hotend. It is necessary to completely remove it from the printer.
- ⚠ **WARNING: The hotend and heatbed are very HOT. Do not touch these parts!!!**
- ◆ Move the Z-axis down. On the screen, navigate to *Control* -> *Move axis* -> *Move Z*.
- ◆ Cool down the printer. On the screen, navigate to *Preheat* -> *Cool-down*.
- ⚠ **Wait until the hot parts are cooled down to ambient temperature. It takes approximately 10 minutes.**

---

## STEP 4 Unplugging the printer



- Turn the power switch OFF (symbol "O").
- From the rear side of the printer, unplug the PSU cable.

---

## STEP 5 Protecting the heatbed




- i** Before you proceed, it is recommended to protect the heatbed.
- Make sure the heatbed is cooled down to ambient temperature. Place the empty cardboard box approximately to the front center part of the heatbed.


## STEP 6 Multi-Tool & Single-Tool




 **The following instructions are divided according to your printer variant.**

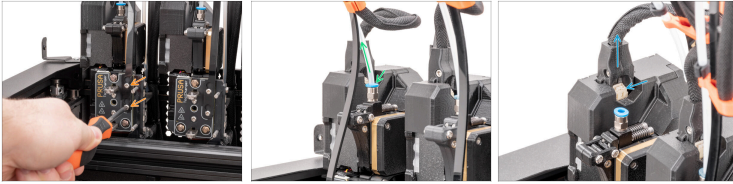
 **Choose the appropriate steps:**

 **Multi-Tool:** please proceed to the next step

 **Single-Tool:** please proceed to the **Single-Tool: releasing the Nextruder**

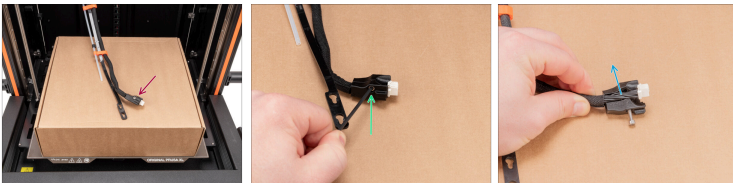
 Some steps are demonstrated using the Multi-Tool variant, but the procedure remains the same for both the Multi-Tool and Single-Tool variants.

## STEP 7 Multi-Tool: disconnecting the Nextruder



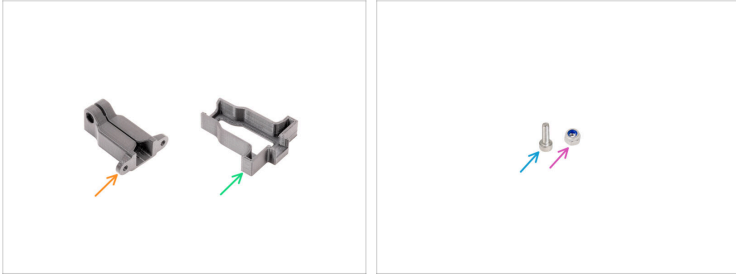
- From the front side of the Nextruder, using a T10 screwdriver, loosen (a few turns are enough) two M3x8r screws and take off the cable support.
- Locate the fitting, press the blue collet and unplug the PTFE tube from the Nextruder. Leave the PTFE hanging freely.
- Locate the Nextruder cable, press the secure latch and unplug the cable from the Nextruder. Leave the cable hanging.

## STEP 8 Multi-Tool: Disassembling the Nextruder cable



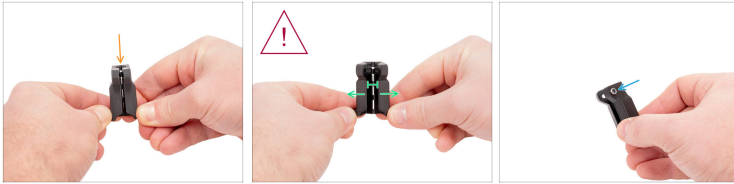
- Put the Nextruder cable on the box.
- Using a 2.5 mm Allen key, remove the M3x16 screw from the xl-dwarf-cover-connector.
- Gently remove the Nextruder cable from the xl-dwarf-cover-connector. **Discard the xl-dwarf-cover-connector, as it is no longer needed.**

## STEP 9 Multi-Tool: XL dwarf cover connector: parts preparation



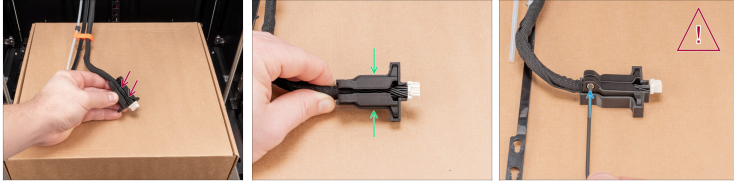
- **For the next steps, please prepare:**
- XL-dwarf-cover-connector (1x)
  - XL-dwarf-cover-connector-jig (1x)
  - M3x10 screw (1x)
  - M3nN nut (1x)

## STEP 10 Multi-Tool: Preparing the XL dwarf cover connector



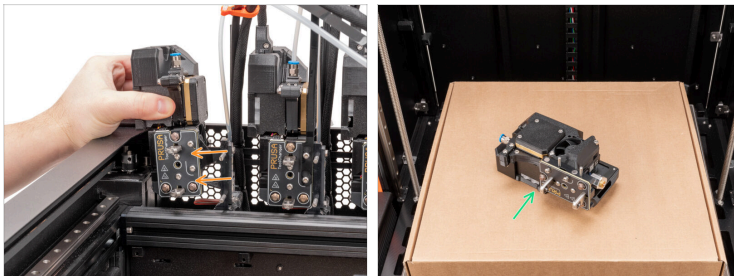
- 🟠 Take the XL-dwarf-cover-connector.
- ⚠️ **Proceed carefully, do not break the XL-dwarf-cover-connector!**
- 🟢 Use both hands to gently open the XL-dwarf-cover-connector. An opening of 5.0 mm is sufficient.
- 🟡 Insert the M3nN nut into the prepared hexagon hole in the XL-dwarf-cover-connector.

## STEP 11 Multi-Tool: Reassembling the Nextruder cable



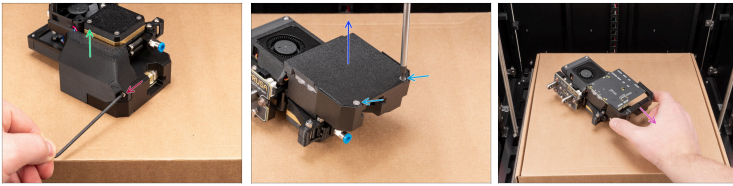
- ◆ Insert the Nextruder cable into the prepared XL-dwarf-cover-connector.
- ◆ Insert the XL-dwarf-cover-connector into the XL-dwarf-cover-connector-jig.
- ⚠ **Do not pinch any cables!**
- ⓘ The Nextruder cable needs to be longer than the front of the XL-dwarf-cover-connector-jig.
- ◆ Insert the M3x10 screw and secure it with a 2.5 mm Allen key.

## STEP 12 Multi-Tool: detaching the Nextruder



- ◆ Gently undock the Nextruder.
- ◆ Place the Nextruder on the box.

## STEP 13 Multi-Tool: Disassembling the Nextruder



- i** The next steps are compatible with both Single-tool and Multi-tool Nextruders.
- Red hexagon icon** Using a 2.5 mm Allen key, remove the M3x16 screw.
- Green hexagon icon** Remove the XL-dwarf-cover-door.
- Black hexagon icon** Turn the Nextruder so that the back is facing upwards.
- Blue hexagon icon** Using a T10 Torx screwdriver, remove two M3x6bT screws.
- Blue hexagon icon** Remove the XL-dwarf-cover-back.
- Pink hexagon icon** Slide the XL-dwarf-cover-base off the dwarf board and **discard it, as it is no longer needed.**

## STEP 14 Multi-Tool: XL dwarf cover base: parts preparation



● **For the next steps, please prepare:**

- XL-dwarf-cover-base (1x)
- M3nS nut (4x)
- M3nN nut (1x)
- XL-dwarf-cover-back (1x) *you removed earlier*
- M3x6bt screw (2x) *you removed earlier*

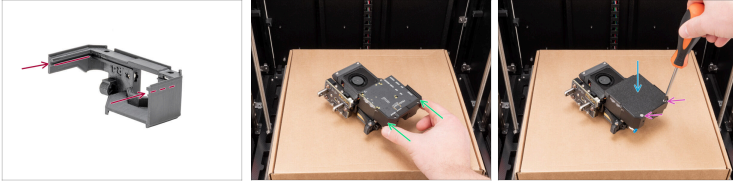
---

## STEP 15 Multi-Tool: Preparing the XL dwarf cover base



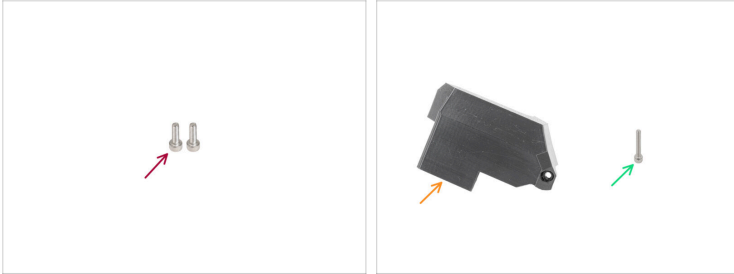
- Insert two M3nS nuts into the holes.
  - Ensure the screw holes in the printed part align with the nuts.
- Insert two M3nS nuts into the holes.
- Insert the M3nN nut into the hole.

## STEP 16 Multi-Tool: Securing the XL dwarf cover base



- There is a rail on each inner side of the part. These rails are meant to slide onto the Dwarf board.
- Push the XL-dwarf-cover-base onto the Dwarf board and slide it into place.
- Place the XL-dwarf-cover-back onto the assembly.
- Insert two M3x6bT screws and secure them with a T10 Torx screwdriver.

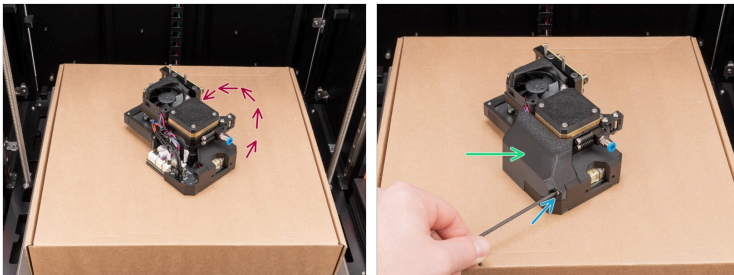
## STEP 17 Multi-Tool: XL dwarf cover door: parts preparation



● For the next step, please prepare:

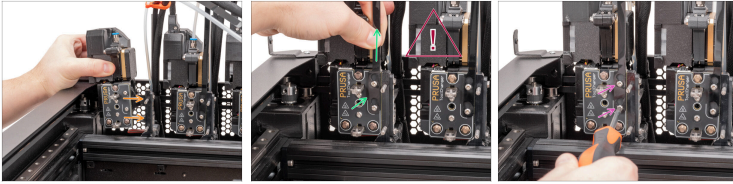
- M3x10 screw (2x)
- XL-dwarf-cover-door (1x) *you removed earlier*
- M3x16 screw (1x) *you removed earlier*

## STEP 18 Multi-Tool: XL dwarf cover door securing



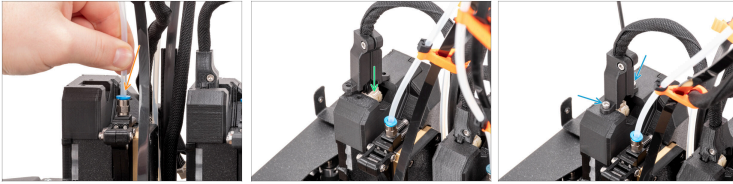
- Turn the Nextruder on the Dwarf board side.
- Attach the XL-dwarf-cover-door.
- Insert M3x16 and secure it gently using a 2.5 mm Allen key.

## STEP 19 Multi-Tool: docking the Nextruder



- ✦ Place the two metal inserts through the white holes in the dock. The magnets will help you dock the Nextruder.
- ⚠ **Check that the cable bundle is not twisted!**
- ✦ Hook up the keyhole openings in the flexible plate of the cable bundle onto the screw heads and push it up to correct the position.
- ✦ Tighten two M3x8rT screws. using a T10 Torx screwdriver.

## STEP 20 Multi-Tool: securing the cable bundle



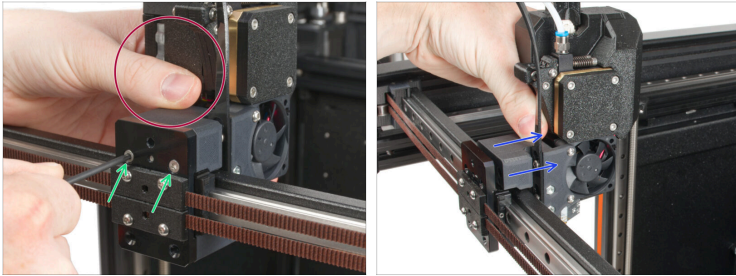
- ✦ Insert the PTFE tube into the fitting on the Nextruder. Push it all the way in.
- ✦ Attach the Nextruder cable to the top of the Nextruder and connect the main cable to the slot on the Dwarf board.
- ✦ Insert two M3x10 screws and secure them using a 2.5 mm Allen key.
- ✦ Proceed the same to the remaining tools.
- ✦ When all the remaining tools are finished, proceed to the **Good job**

## STEP 21 Single-Tool: releasing the Nextruder



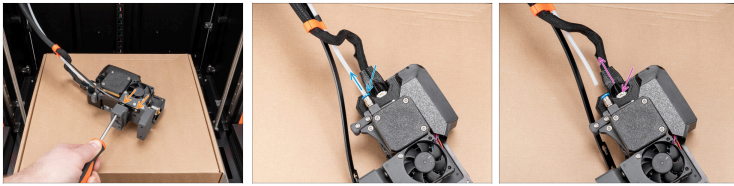
- ◆ This is where Single-tool assembly begins.
- ◆ Turn the printer, so the front side is facing you.
- ◆ Snap off the x-carriage-cover back from the X-carriage. **Do not throw it away, we'll use it later!**
- ◆ Using a T10 Torx key, remove two M3x12bT screws.

## STEP 22 Single-Tool: detaching the Nextruder



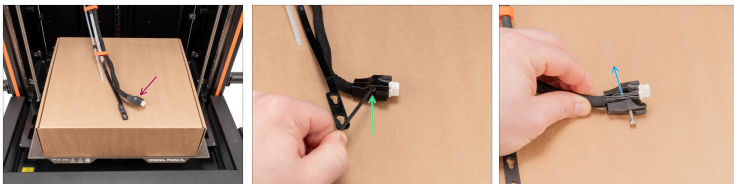
- ◆ Hold the Nextruder during disassembly.
- ◆ Untighten two M3x12bT screws using a T10 Torx key.
- ◆ Detach the Nextruder and place it nearby, we will rebuilt it in the next steps.
- ◆ Place the Nextruder with the cable bundle on the box.

## STEP 23 Single-Tool: releasing the cable bundle



- From the front side of the Nextruder, using a T10 Torx screwdriver untighten two screws to release the cable support.
- Press the fitting and pull out the PTFE tube.
- Press the secure pin and remove the Nextruder cable.
- Put the Nextruder aside, we will work on it later.

## STEP 24 Single-Tool: Disassembling the Nextruder cable



- Put the Nextruder cable on the box.
- Using a 2.5 mm Allen key, remove the M3x16 screw from the xl-dwarf-cover-connector.
- Gently remove the Nextruder cable from the xl-dwarf-cover-connector. **Discard the xl-dwarf-cover-connector, as it is no longer needed.**

## STEP 25 Single-Tool: XL dwarf cover connector: parts preparation



● **For the next steps, please prepare:**

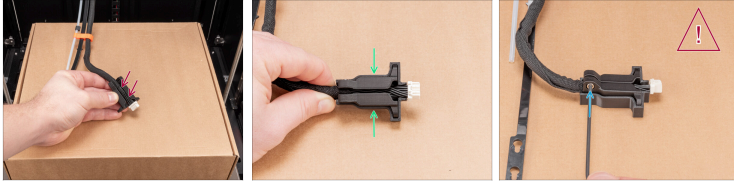
- XL-dwarf-cover-connector (1x)
- Optional: XL-dwarf-cover-connector-jig (1x)
  - ⓘ For adjusting the cable length.
- M3x10 screw (1x)
- M3nN nut (1x)

## STEP 26 Single-Tool: Preparing the XL dwarf cover connector



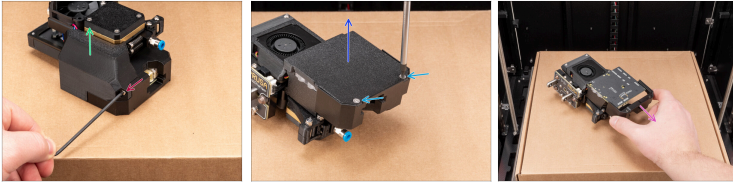
- Take the XL-dwarf-cover-connector.
- Using both hands, gently open the XL-dwarf-cover connector. Open it just enough—5.0 mm is sufficient.
  - ⚠ Proceed carefully, **do not break the XL-dwarf-cover-connector!**
- Insert the M3nN nut into the prepared hexagon hole in the XL-dwarf-cover-connector.

## STEP 27 Single-Tool: Reassembling the Nextruder cable



- ◆ Insert the Nextruder cable into the prepared XL-dwarf-cover-connector.
- ◆ Insert the XL-dwarf-cover-connector into the XL-dwarf-cover-connector-jig.
- ⚠ **Do not pinch any cables!**
- ⓘ The Nextruder cable must extend beyond the front of the XL-dwarf-cover-connector-jig.
- ◆ Insert the M3x10 screw and secure it with a 2.5 mm Allen key.

## STEP 28 Single-Tool: Disassembling the Nextruder



- ◆ Using a 2.5 mm Allen key, remove the M3x16 screw. **Don't throw the part away!**
- ◆ Remove the XL-dwarf-cover-door. **Don't throw the part away!**
- ◆ Turn the Nextruder so that the back is facing upwards.
- ◆ Using a T10 Torx screwdriver, remove two M3x6bT screws. **Don't throw the parts away!**
- ◆ Remove the XL-dwarf-cover-back. **Don't throw the part away!**
- ◆ Slide out the XL-dwarf-cover-base from the dwarf board. **Throw the XL-dwarf-cover-base away.**

## STEP 29 Single-Tool: XL dwarf cover base: parts preparation



● **For the next steps, please prepare:**

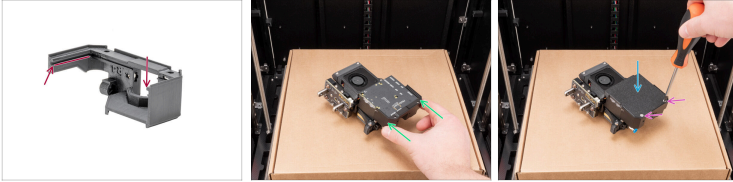
- XL-dwarf-cover-base (1x)
- M3nS nut (4x)
- M3nN nut (1x)
- XL-dwarf-cover-back (1x) *you removed earlier*
- M3x6bt screw (2x) *you removed earlier*

## STEP 30 Single-Tool: Preparing the XL dwarf cover base



- Insert two M3nS nuts into the holes.
  - Ensure the screw holes in the printed part align with the nuts.
- Insert two M3nS nuts into the holes.
- Insert the M3nN nut into the hole.

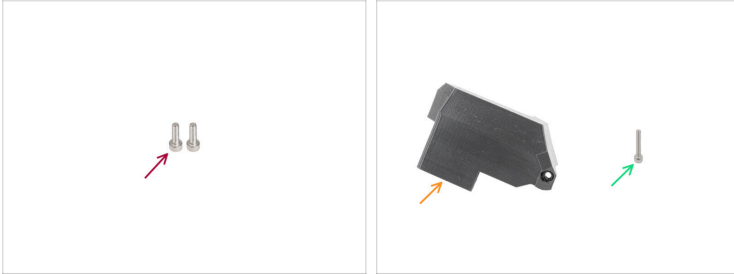
## STEP 31 Single-Tool: Securing the XL dwarf cover base



- There is a rail on each inner side of the part. These rails are meant to slide onto the Dwarf board.
- Push the XL-dwarf-cover-base to the dwarf board and slide it in place.
- Place the XL-dwarf-cover-back onto the assembly.
- Insert two M3x6bT screws and secure them with a T10 Torx screwdriver.

How to replace the main cable connector cover (XL)

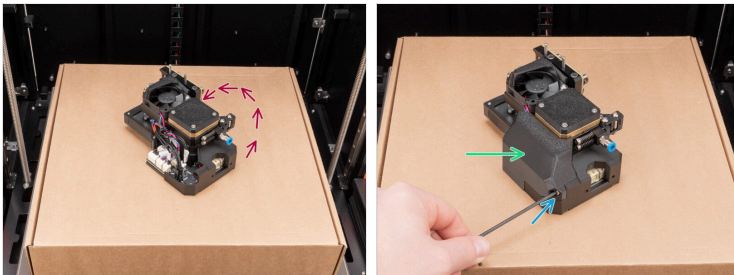
## STEP 32 Single-Tool: XL dwarf cover door: parts preparation



● For the next step, please prepare:

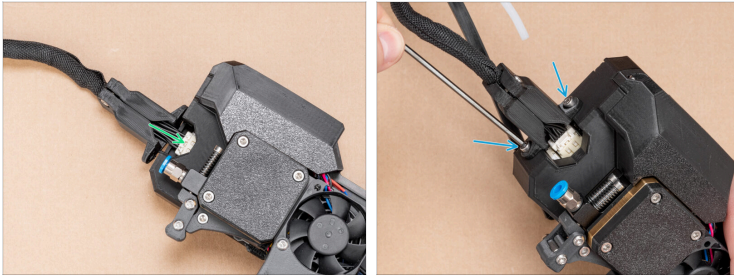
- M3x10 screw (2x)
- XL-dwarf-cover-door (1x) *you removed earlier*
- M3x16 screw (1x) *you removed earlier*

## STEP 33 Single-Tool: XL dwarf cover door securing



- Turn the Nextruder on the Dwarf board side.
- Attach the XL-dwarf-cover-door.
- Insert M3x16 and secure it gently using a 2.5 mm Allen key.

## STEP 34 Single-Tool: securing the Nextruder cable



- Attach the Nextruder cable to the top of the Nextruder and connect the main cable to the slot on the Dwarf board.
- Insert two M3x10 screws and secure them using a 2.5 mm Allen key.

## STEP 35 Single-Tool: securing the cable bundle



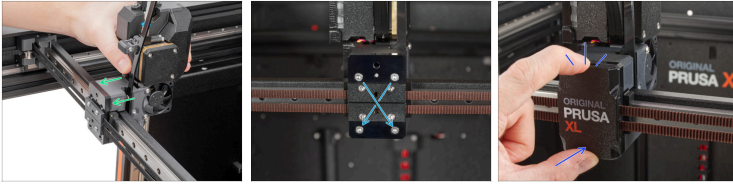
- Insert the PTFE tube into the fitting on the Nextruder. Push it all the way in.
- Hook up the keyhole openings in the flexible plate of the cable bundle and tighten two M3x8rT screws using a T10 Torx screwdriver.

## STEP 36 Single-Tool: securing the Nextruder: parts preparation



- **For the next steps, please prepare:**
- M3x12bT screw (4x) *you removed earlier*
  - M3x10 screw (2x)
  - X-carriage-cover (1x) *you removed earlier*

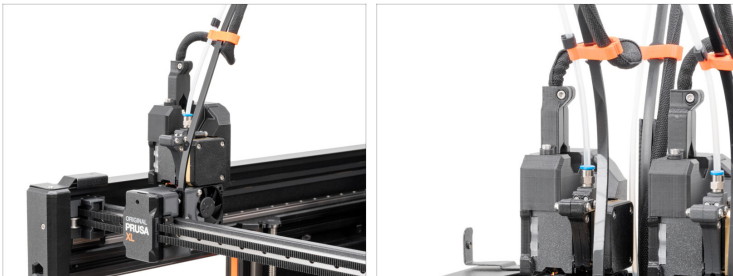
## STEP 37 Single-Tool: installing the Nextruder



- From the back of the X-carriage, attach the extruder assembly to the X-carriage. See the correct orientation of the extruder.
- Insert and fully tighten all four M3x12bT screws diagonally to secure the extruder assembly.
- Attach the bottom part of the x-carriage-cover back onto the X-carriage, then snap the upper part onto the X-carriage. You must feel a slight "click" to ensure the cover fits on the part.

---

## STEP 38 Good job



- Well done! The XL-dwarf-cover-connector is replaced.



---

---

---

---

---

---

---

---

---

---



---

---

---

---

---

---

---

---

---

---

