

Table of Contents

How to install Advanced Filtration (CORE One)

- 3
- Step 1 - Introduction 4
- Step 2 - Tools necessary for this guide 5
- Step 3 - Advanced Filtration: parts preparation
..... 5
- Step 4 - Installing the blower 6
- Step 5 - Installing the sealing foam 7
- Step 6 - Inserting the HEPA filter 8
- Step 7 - Mounting the filtration assembly 9
- Step 8 - Removing the electronics covers 9
- Step 9 - Connecting the blower cable 10
- Step 10 - Covering the electronics 11
- Step 11 - Firmware INFO 12
- Step 12 - Done 13

How to install Advanced Filtration (CORE One)



help.prusa3d.com/g868297

Scan the QR code to
display the latest
version of this
chapter.

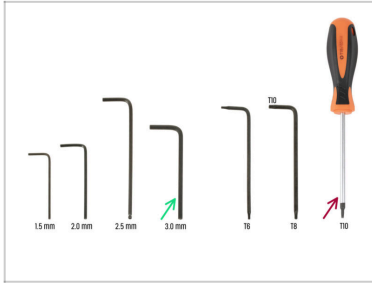


STEP 1 Introduction



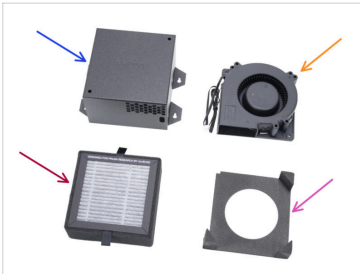
- ◆ This guide will take you through the installation of the **Advanced Filtration** on your **Prusa CORE One**.
- ◆ If you are installing the Advanced Filtration System on **Prusa CORE One L**, please follow the instructions in the corresponding manual **How to install Advanced Filtration (CORE One L)**
- ◆ All necessary parts are available in our eshop prusa3d.com.
- ⓘ Note that you have to be logged in to have access to the spare parts section.

STEP 2 Tools necessary for this guide



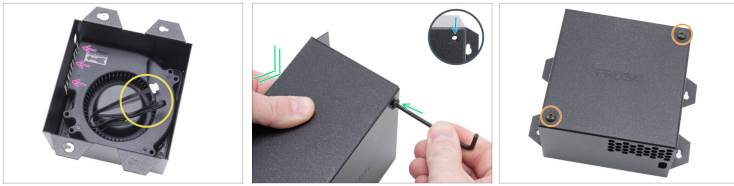
- **For this chapter, please prepare:**
- 3.0mm Allen key
- T10 torx key / T10 torx screwdriver

STEP 3 Advanced Filtration: parts preparation



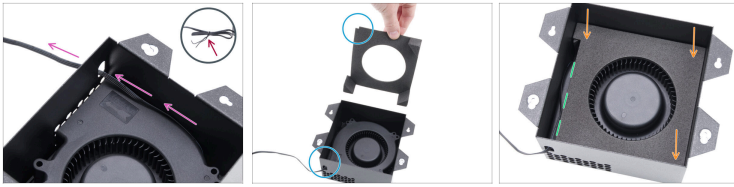
- **For the following steps, please prepare:**
- Filtration case (1x)
- High Pressure Blower (1x)
- HEPA filter (1x)
- Sealing foam (1x)
- M5x6r screw (2x)
- M3x4rT screw (4x)

STEP 4 Installing the blower



- ✦ Insert the blower into the filtration case with the air flow opening facing the grid on the case.
- ✧ Ensure the blower cable is positioned on top and not trapped underneath.
- ✧ From underneath the filtration case, align any hole with one on the blower.
- ✧ Secure the blower with the M5x6r screw.
 - The **hole isn't threaded**, so the screw will cut its own - expect some resistance. Push on the blower from the inside to help.
 - ⚠ **Do not extra overtighten, the tapped thread may be stripped.**
- ✧ Continue in the same way with the remaining hole.

STEP 5 Installing the sealing foam



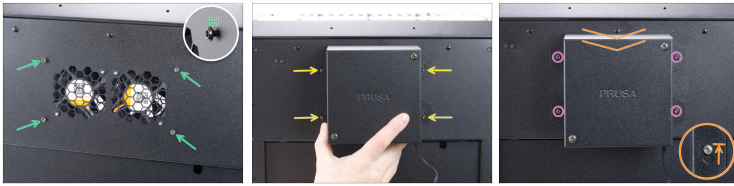
- ◆ Untie the blower cable harness.
 - ⓘ Don't throw away the wire tie, it will come in handy later.
- ◆ Route the blower cable next to the blower case and out through the oval hole above the grid.
- ◆ Place the sealing foam as shown, with the corner cutout aligned to the same side as the cable outlet.
 - ⚠ **Make sure the foam protrusions face the correct direction.**
- ◆ Place the sealing foam over the blower, **ensuring the protrusions fill the corner gaps** around it.
- ◆ Check the blower cable is routed straight and fits properly inside the foam cutout.

STEP 6 Inserting the HEPA filter



- ⚠ Remove the HEPA filter from its packaging.
- ◆ Insert the HEPA filter into the filtration case assembly.
- ◆ **Ensure it is oriented correctly.** Use the printed text on the filter as a guide.
- ◆ The filter must sit flush with the edges of the filtration case.

STEP 7 Mounting the filtration assembly



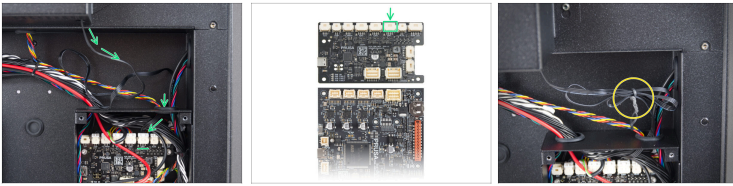
- ◆ Insert four M3x4rT screws on the back of the printer.
- ◆ **Do not tighten the screws completely**, leave approximately a 2 mm (0.08 in) gap.
- ◆ Mount the filtration assembly onto the screws using the large holes in the assembly.
- ◆ Slide the filtration assembly downward to lock it into its final position on the screws.
- ◆ Tighten all four screws.

STEP 8 Removing the electronics covers



- ◆ On the inside of the printer, remove the two M3x4rT screws holding the back cover.
- ◆ On the back of the printer, remove the top cable cover from the printer.
- ◆ Release six M3x4rT screws on the xBuddy box cover.
- ◆ Slide out the xBuddy box cover and put it aside.

STEP 9 Connecting the blower cable



- Guide the blower cable through the right hole and connect it to the slot labeled *FAN3* on the xBuddy extension board.
- It's recommended to create a loop with the excess cable and secure it using the wire tie that came on the blower cable.

STEP 10 Covering the electronics



- 🟠 Attach the xBuddy box cover to the electronics box and secure it using the six M3x4rT screws you previously removed.
- 🟢 Align the rear sheet metal cover so that the cables can run through the "tray".
- 🟡 Guide the blower cable through the U-shaped cutout in the cover. **Avoid pinch the cable.**
- 🟣 Place the rear sheet metal cover into the recess. Push it toward the printer, then move it upward to engage it.
 - ⬛ There are four tabs that should engage into the printer's chassis.
- ⚠️ **Ensure the blower cable is still in U-shaped cutout.**
- 🟢 Secure the rear cover in place using two M3x4rT screws from inside the printer.

STEP 11 Firmware INFO



- ◆ Starting with firmware version 6.3.1, a new menu option for the *Filtration Fan* is available.
- 📌 To update the firmware, please follow the dedicated instructions available at [How to update firmware](#).
- ◆ Navigate to your printer settings: *Settings* -> *Chamber Filtration* and select *Chamber Filtration [none]*.
- ◆ Enable *Advanced Filtration* mode or *DIY* mode if you have a custom filtration setup.
- ◆ The *Filtration Fan* option can be found in the menu:
 - ◆ **Idle mode** - *Control* -> *Temperature* -> *Filtration Fan*
 - ◆ **Printing** - *Tune* -> *Filtration Fan*
- ⓘ The *Filtration Fan* is set to *Auto* by default. This means it will automatically activate depending on the material in use.

STEP 12 Done



- ◆ **Congratulations!**
You've successfully installed the Advanced Filtration on your Prusa CORE One.
