

Table of Contents

How to replace HEPA filter (HT90)	3
Step 1 - Introduction	4
Step 2 - Parts necessary for this manual	4
Step 3 - Additional tools	5
Step 4 - Printer preparing	5
Step 5 - Door opening stopper releasing	6
Step 6 - Door opening stopper removing	6
Step 7 - Sliding door opening	7
Step 8 - HEPA filter removing	7
Step 9 - HEPA filter: parts reparation	8
Step 10 - HEPA filter installing	8
Step 11 - HEPA filter covering	9
Step 12 - Sliding door closing	9
Step 13 - Door opening stopper securing	10
Step 14 - Well done!	10

How to replace HEPA filter (HT90)

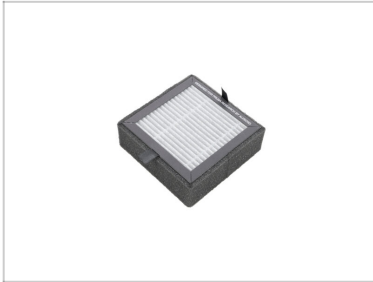


help.prusa3d.com/g887220

Scan the QR code to
display the latest
version of this
chapter.



STEP 1 Introduction



◆ This guide will take you through the replacement of the HEPA filter on the **HT90**.

◆ All necessary parts are available on our e-shop **prusa3d.com**.

ⓘ *The recommended changing interval for the HEPA filter is every 600 printing hours. However, the printer itself will notify you of maintenance via firmware.*

STEP 2 Parts necessary for this manual



◆ **For the following manual, please prepare:**

◆ HEPA filter (1x)

STEP 3 Additional tools

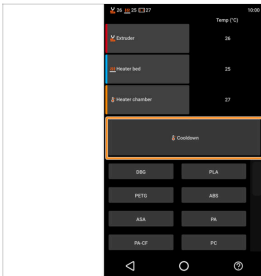


i Tools that are not supplied but can make maintenance easier.

Additional tools:

Flat screwdriver

STEP 4 Printer preparing



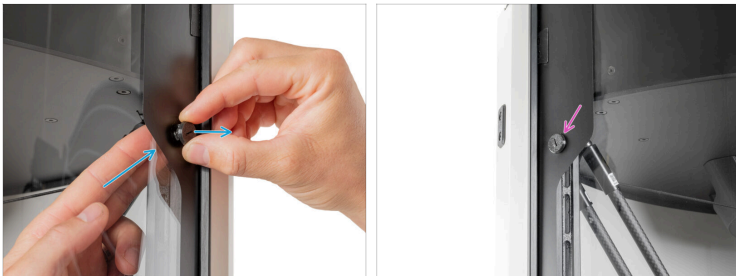
- Cool down the printer. Go to *More > Temperature > Cooldown*. Wait till the printer is cooled down!
- ⚠** **Make sure the heated bed is cooled down to ambient temperature.**
- In the LCD Menu, select *More > Move > Service position*. This will move the print head to the service position, providing space for manipulation.
- Turn the power switch OFF (symbol "O").

STEP 5 Door opening stopper releasing



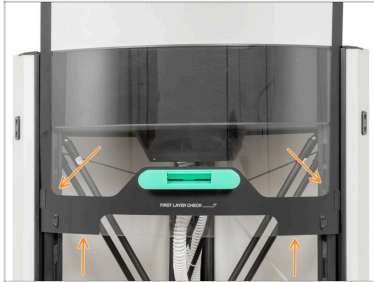
- ◆ Open the sliding door.
- ◆ Using a flat screwdriver, loosen the Door-opening-stopper by turning it 120° counter-clockwise.
- ⓘ The Door-opening-stopper is a printed part, just a slight twist will loosen this part.

STEP 6 Door opening stopper removing



- ◆ Remove the Door-opening-stopper by pushing from the inside of the printer.
- ◆ Repeat the process on the second Door-opening-stopper on the other side of the lid.

STEP 7 Sliding door opening



- Slowly pull the sliding door up to the second step.

STEP 8 HEPA filter removing



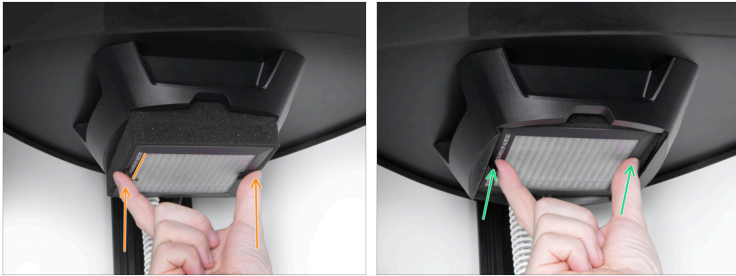
- Take the front part of the filter cover and gently pull it towards you.
- Remove the cover.
- Remove the filter by pulling it down by the side loops

STEP 9 HEPA filter: parts preparation



- For the next step, please prepare:
- HEPA filter (1x)

STEP 10 HEPA filter installing



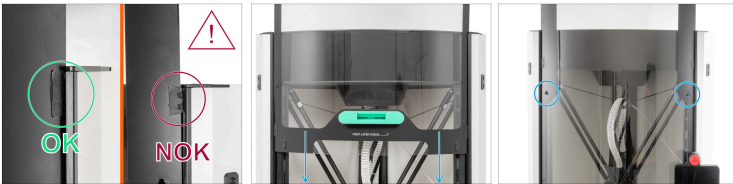
- Place the HEPA filter into the filtration compartment with the lighter side of the filter (the side with the company name) facing down.
- Push the HEPA filter all the way in.

STEP 11 HEPA filter covering



- Attach the cover to the slot.
- Slide the cover all the way in.

STEP 12 Sliding door closing



- Before pulling down the sliding door, check that the plastic Door-guides on both sides are inserted into the rails. See the picture.**
- Now slowly pull the sliding door downwards until the plastic cut-outs for the Door-opening-stopper are under the top panel. See the picture.

STEP 13 Door opening stopper securing



- Using a flat screwdriver, secure the Door-opening-stopper by turning it clockwise.
- ⓘ The Door-opening-stopper is a printed part, just a slight twist will secure this part.
- Repeat this process on the left side of the sliding door.
- Close the sliding door.

STEP 14 Well done!



- Good job! The HEPA filter is changed. Happy printing!
