

Tabla de Contenido

How to replace HEPA filter (HT90)	3
Paso 1 - Introduction	4
Paso 2 - Parts necessary for this manual	4
Paso 3 - Additional tools	5
Paso 4 - Printer preparing	5
Paso 5 - Door opening stopper releasing	6
Paso 6 - Door opening stopper removing	6
Paso 7 - Sliding door opening	7
Paso 8 - HEPA filter removing	7
Paso 9 - HEPA filter: parts reparation	8
Paso 10 - HEPA filter installing	8
Paso 11 - HEPA filter covering	9
Paso 12 - Sliding door closing	9
Paso 13 - Door opening stopper securing	10
Paso 14 - Well done!	10

How to replace HEPA filter (HT90)

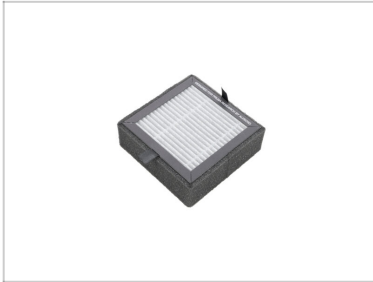


help.prusa3d.com/g887224

Escanea el código
QR para ver la última
versión de este
capítulo.



PASO 1 Introduction



- This guide will take you through the replacement of the HEPA filter on the **HT90**.
- All necessary parts are available on our e-shop **prusa3d.com**.
- ⓘ *The recommended changing interval for the HEPA filter is every 600 printing hours. However, the printer itself will notify you of maintenance via firmware.*

PASO 2 Parts necessary for this manual



- **Para el siguiente manual, por favor prepara:**
- HEPA filter (1x)

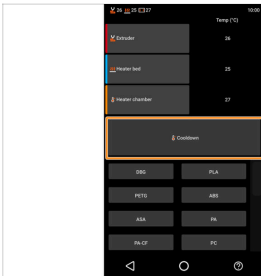
PASO 3 Additional tools



i Herramientas que no se suministran pero que pueden facilitar el mantenimiento.

- **Additional tools:**
- Flat screwdriver

PASO 4 Printer preparing



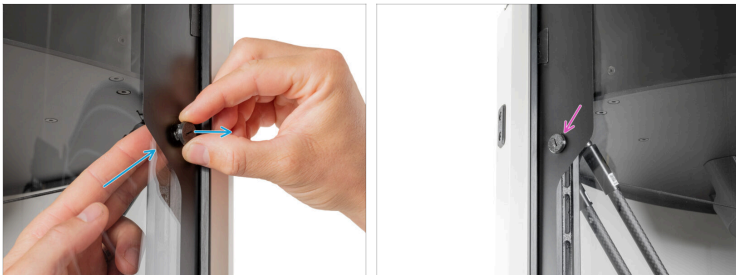
- Enfría la impresora. Ve a *More > Temperature > Cooldown*. Espera a que la impresora se enfríe.
- ⚠ **Asegúrate de que la base calefactable se ha enfriado hasta la temperatura ambiente.**
- In the LCD Menu, select *More > Move > Service position*. This will move the print head to the service position, providing space for manipulation.
- Apaga el interruptor (símbolo "O").

PASO 5 Door opening stopper releasing



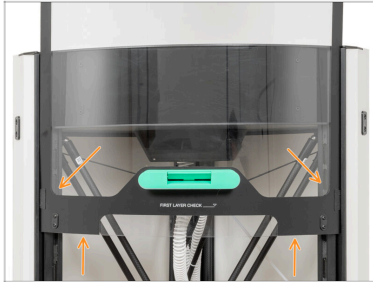
- Abre la puerta corredera.
- Con un destornillador plano, afloja el Door-opening-stopper girándolo 120° en el sentido contrario a las agujas del reloj.
- ⓘ The Door-opening-stopper is a printed part, just a slight twist will loosen this part.

PASO 6 Door opening stopper removing



- Remove the Door-opening-stopper by pushing from the inside of the printer.
- Repeat the process on the second Door-opening-stopper on the other side of the lid.

PASO 7 Sliding door opening



- Tira lentamente de la puerta corredera hasta el segundo escalón.

PASO 8 HEPA filter removing



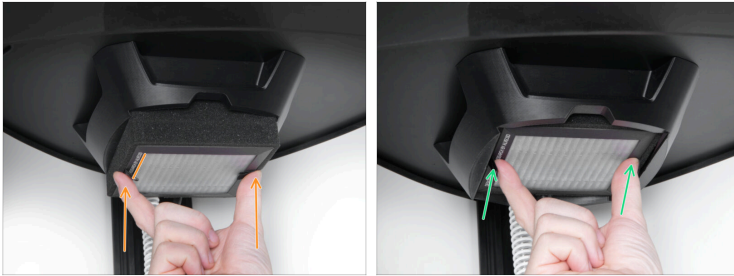
- Take the front part of the filter cover and gently pull it towards you.
- Remove the cover.
- Remove the filter by pulling it down by the side loops

PASO 9 HEPA filter: parts reparation



- **Para los siguientes pasos, por favor prepara:**
- HEPA filter (1x)

PASO 10 HEPA filter installing



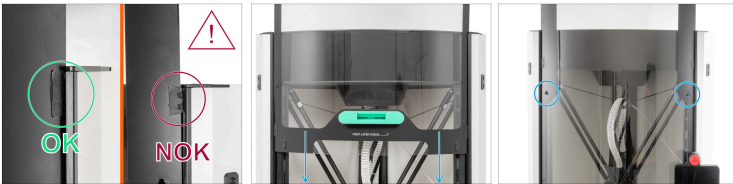
- Place the HEPA filter into the filtration compartment with the lighter side of the filter (the side with the company name) facing down.
- Empuja el filtro HEPA hasta el fondo.

PASO 11 HEPA filter covering



- Attach the cover to the slot.
- Slide the cover all the way in.

PASO 12 Sliding door closing



- ⚠** Antes de bajar la puerta corredera, comprueba que las Door-guides de plástico de ambos lados están insertadas en los railes. Mira la imagen.
- Ahora tira lentamente de la puerta corredera hacia abajo hasta que los recortes de plástico para el Door-opening-stopper queden debajo del panel superior. Mira la imagen.

PASO 13 Door opening stopper securing



- Using a flat screwdriver, secure the Door-opening-stopper by turning it clockwise.
- ⓘ The Door-opening-stopper is a printed part, just a slight twist will secure this part.
- Repite este proceso en el lado izquierdo de la puerta corredera
- Cierra la puerta corredera.

PASO 14 Well done!



- Good job! The HEPA filter is changed. Happy printing!
