

Tabla de Contenido

How to replace a high-temperature nozzle

- (HT90) 3
 - Paso 1 - Introduction 4
 - Paso 2 - Tools necessary for this guide 5
 - Paso 3 - Releasing the nozzle 6
 - Paso 4 - Removing the nozzle 7
 - Paso 5 - New High-temperature nozzle: parts
preparation 7
 - Paso 6 - Installing the new nozzle 8

How to replace a high-temperature nozzle (HT90)



help.prusa3d.com/g900314

Escanea el código
QR para ver la última
versión de este
capítulo.



PASO 1 Introduction



- ◆ This guide will walk you through **replacing the high-temperature nozzle** on the Prusa Pro HT90 using the **High-temperature nozzle exchange tool**.

ⓘ This guide expands on the Nozzle replacement (HT90) and covers situations where the High-temperature nozzle cannot be loosened by hand due to thermal expansion from high printing temperatures.



Make sure your nozzle and heater block are clean before you begin this process.

- ◆ For detailed information, please refer to Regular printer maintenance (HT90).



For easier access, we recommend performing the nozzle replacement with the print head removed from the printer. The instructions in this guide follow this recommended approach.

- ◆ For instructions on how to remove the print head, please refer to Changing the print head.



WARNING: The print head must be COOLED DOWN before proceeding with these instructions.

PASO 2 Tools necessary for this guide

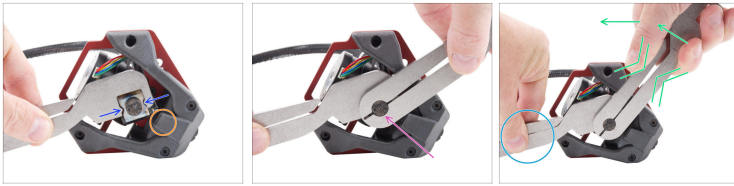


● Para los siguientes pasos, por favor prepara:

● High-temperature nozzle exchange tool (2x)

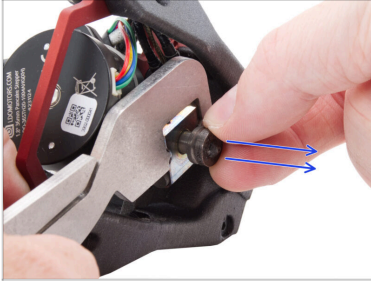
⚠ **Do not attempt to pull apart or bend the arms of the High-temperature nozzle exchange tool.** Forcing the tool open may cause it to crack or break, making it unusable.

PASO 3 Releasing the nozzle



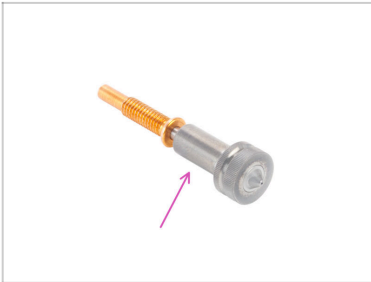
- ◆ Place the High-temperature nozzle exchange tool onto the clean heater block of the print head.
 - ◆ The notches on the tool must align with and fit into the grooves on the heater block.
- ◆ Position the tool so it **doesn't interfere with the fan shroud**.
- ◆ Take the second High-temperature nozzle exchange tool and attach its circular jaws onto the clean nozzle.
- ◆ Hold the first tool, which is holding the heater block, firmly.
- ◆ Loosen the nozzle by **gripping the arms of the circular jaws** on the second tool and turning it counterclockwise.

PASO 4 Removing the nozzle



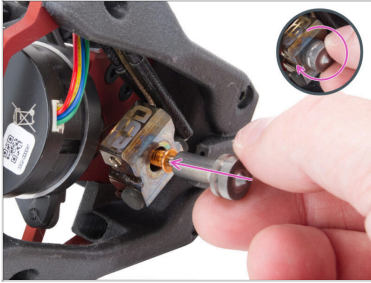
- Once the nozzle is loosened, you can unscrew it completely from the heater block using your fingers.

PASO 5 New High-temperature nozzle: parts preparation



- Para los siguientes pasos, por favor prepara:**
- High-temperature nozzle (1x)

PASO 6 Installing the new nozzle



- ◆ Insert the high-temperature nozzle into the heater block and finger-tighten it **firmly**.
- ◆ Now you can install the tool head back on the printer. For detailed instructions on this process, please refer to Changing the print head.

⚠ **Do not use the High-temperature nozzle exchange tool for tightening the nozzle, as this may lead to overtightening and potential damage to the nozzle.**
