

Table of Contents

- How to assemble the spool holder (HT90) 3**
 - Step 1 - Introduction 4
 - Step 2 - Spool holder fasteners: parts
preparation 5
 - Step 3 - Tools necessary for this guide 5
 - Step 4 - Assembling the spool holder body
..... 6
 - Step 5 - Securing the body parts 7
 - Step 6 - Installing the spool holder mount
..... 8
 - Step 7 - Mounting the spool holder 9

How to assemble the spool holder (HT90)



help.prusa3d.com/g903163


Scan the QR code to
display the latest
version of this
chapter.



STEP 1 Introduction



- This guide will take you through the **assembly of the spool holder** for the **Prusa Pro HT90**.

 **To complete this assembly, you will need the printed parts for the spool holder.**




The necessary print data for the required parts is available on [Printables.com](https://www.printables.com).

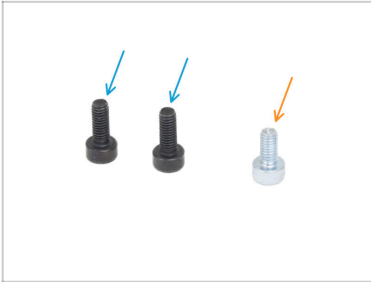
Please make sure to **read the print instructions** provided in the model's description.

- **Required Printed Parts:**

- spool-holder-fix.stl (1x)
- spool-holder-mount.stl (1x)
- spool-holder-movable.stl (1x)

 If you are unable to print these parts yourself, please contact our company directly to acquire them.

STEP 2 Spool holder fasteners: parts preparation



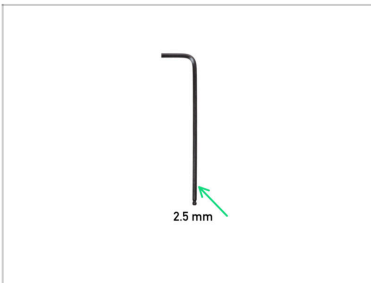
● **For the following steps, please prepare:**

ⓘ If you are replacing an older spool holder assembly, you can reuse the screws from your existing unit.

● M3x8 screw (2x)
black by default

● M3x6 screw (1x)

STEP 3 Tools necessary for this guide



● **For this guide, please prepare:**

● 2.5mm Allen key
(ball end is not required)

STEP 4 Assembling the spool holder body



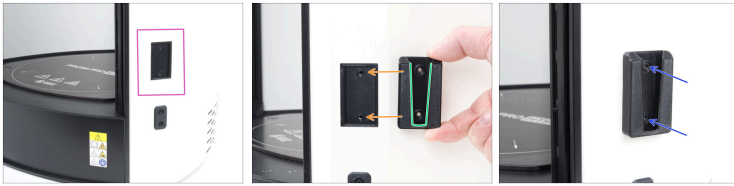
- ◆ Place the M3x6 screw onto the long arm of the 2.5mm Allen key.
- ◆ Push the Allen key with the screw through the larger hole in the spool-holder-fix part.
- ◆ From inside the spool-holder-fix, reach the smaller hole with the screw.
- ◆ Thread the M3x6 screw into the smaller hole.
- ⓘ Note: The screw will cut its own threads into the plastic as it's tightened. **Expect some resistance** during this process.
- ⚠ **Do not fully drive the screw through the part. The tip of the screw must be slightly recessed below the outer surface.**
- ◆ Screw the spool-holder-movable part onto the spool-holder-fix part.

STEP 5 Securing the body parts



- ◆ Slide the spool-holder-movable completely onto the spool-holder-fix part.
- ◆ Locate the opening in the spool-holder-movable part.
 - ◆ In this position, the opening aligns with the pre-installed M3x6 screw inside from the previous step. **Maintain this alignment.**
- ◆ Push the 2.5mm Allen key through the opening and gently tighten the screw.
- ◆ Test the movement of the assembly; the **extension must operate smoothly**. At the same time, the **spool-holder-movable part must not detach from the assembly**.
- ⓘ Stiff movement indicates an overtightened screw. Conversely, an insufficiently tightened screw will cause the spool-holder-movable part to detach from the assembly.

STEP 6 Installing the spool holder mount



- ◆ On the right side of the printer, locate the rectangular pocket.
- ◆ Take the spool-holder-mount and line it up with the pocket.
- ◆ Ensure the part is in the same position as shown in the picture.
- ◆ Fix the spool-holder-mount to the pocket using two M3x8 (black) screws.

STEP 7 Mounting the spool holder



- ◆ Slide the spool holder assembly into the spool-holder-mount.
- ◆ Note: The spool holder can only be inserted from one side. **Ensure the correct orientation of both parts** before attempting to insert.
- ◆ Slide the spool holder assembly completely down.
- ◆ Adjust the spool holder to your desired width, if necessary.



You can now confidently place a spool of filament onto the spool holder. **You're all set!**

Notes:

Notes:

Notes:
