

Table of Contents

How to replace external input fuse (HT90)	3
Step 1 - Introduction	4
Step 2 - Tools necessary for this guide	5
Step 3 - Unplugging the printer	5
Step 4 - Removing the fuse holder	6
Step 5 - New fuse: parts preparation	7
Step 6 - Installing the new fuse	8
Step 7 - Connecting the printer	9
Step 8 - Final check	10

How to replace external input fuse (HT90)



help.prusa3d.com/g903562

Scan the QR code to
display the latest
version of this
chapter.



STEP 1 Introduction



◆ This guide will take you through the **replacement of the input external fuse** on the **Prusa Pro HT90**.

◆ Fuse type:

ⓘ The required fuse type depends on your region's standard voltage.

◆ **For 230V regions:** T 10A/250V 6.3 x 32 mm (0,25 x 1,25")

◆ **For 110V regions:** T 15A/110V 6.3 x 32 mm (0,25 x 1,25")

⚠ **Do not begin disassembly until instructed in the following steps.**

STEP 2 Tools necessary for this guide



- **For this guide, please prepare:**
- Flat screwdriver width 5 mm (0.2 in) and more

STEP 3 Unplugging the printer



⚠ Warning: Before you proceed with any further steps, **turn the printer OFF and unplug it from the electricity.**

- Locate the power switch on the rear right of the printer.
- Flip the power switch to '0' to turn the printer OFF.
- Unplug the power cable from the printer. Be sure to press the yellow lock on the plug before pulling.

⚠ Don't pull on the cable itself; always pull directly on the plug.

STEP 4 Removing the fuse holder



- ◆ Using the flat-head screwdriver, unscrew the fuse holder completely from its threading.
- ◆ Pull the fuse holder out of the printer by hand.
- ◆ Take the fuse out of the holder.
- ⓘ Once removed, inspect the fuse. A blown fuse often shows a visibly broken filament or signs of charring/blackening within the glass tube.
- ◆ If the fuse appears to be blown, discard it according to your country's recycling legislation.

This step also serves as a reminder to ensure the correct fuse type is used when installing the new one.

STEP 5 New fuse: parts preparation



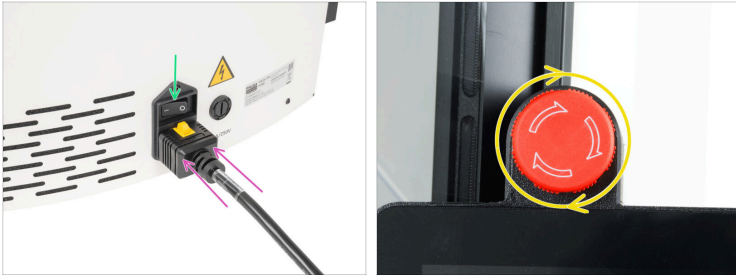
- **For the following steps, please prepare:**
- New fuse (1x)
 - **For 230V regions:** T 10A/250V 6.3 x 32 mm (0,25 x 1,25")
 - **For 110V regions:** T 15A/110V 6.3 x 32 mm (0,25 x 1,25")
- 📌 Before installation, **visually inspect the new fuse** to confirm it's not blown and matches the required specifications.

STEP 6 Installing the new fuse



- ◆ Carefully insert the new fuse into the fuse holder. The fuse can be inserted from either side - orientation doesn't matter.
- ⓘ You might feel some resistance, and the fuse may slide up slightly; this is normal as it compresses the spring underneath.
- ◆ Insert the fuse holder assembly into the printer.
- ◆ Using the flat screwdriver, tighten the fuse holder to secure it in the printer.
- ⚠ **Tighten firmly, but gently. Overtightening may damage the fuse holder.**

STEP 7 Connecting the printer



- ◆ Plug the power cable completely into the printer.
 - ◆ You'll feel the yellow locking tab click into place, confirming the connector is fully inserted.
- ◆ Flip the switch to "I" to turn the printer ON.
- ◆ Ensure the **emergency stop button is unlocked**; otherwise, the printer won't turn on.

STEP 8 Final check



- ◆ With the printer now powered on, **observe its startup sequence.** The printer should proceed to its ready state without issue.
- 📌 If the printer does not power on, recheck the fuse installation, power cable connection, and emergency stop status.
- ⓘ Store spare fuses in a dry, temperature-stable environment.
