

Table of Contents

How to replace the LCD control panel (HT90)	3
Step 1 - Introduction	4
Step 2 - Tools necessary for this guide	5
Step 3 - Unplugging the printer	6
Step 4 - Removing the LCD control panel	7
Step 5 - Disconnecting the cables	8
Step 6 - Disconnecting the emergency stop button	9
Step 7 - New LCD control panel: parts preparation	10
Step 8 - Connecting the emergency stop button	10
Step 9 - Connecting the LCD cables	11
Step 10 - Connecting the PE cable	12
Step 11 - Mounting the LCD control panel	12
Step 12 - Attaching the PTFE tube	13
Step 13 - Connecting the printer	13
Step 14 - Final check	14

How to replace the LCD control panel (HT90)

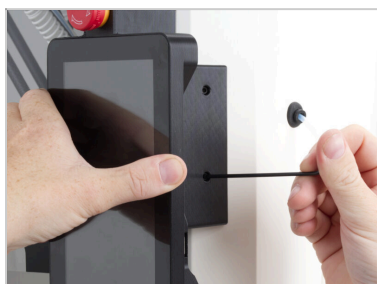


help.prusa3d.com/g905911

Scan the QR code to
display the latest
version of this
chapter.



STEP 1 Introduction



- ◆ This guide will take you through the **replacement of the LCD control panel** on the **Prusa Pro HT90**.



Important: Units manufactured in early 2025 and later are equipped with a modular LCD control panel designed for user replacement.

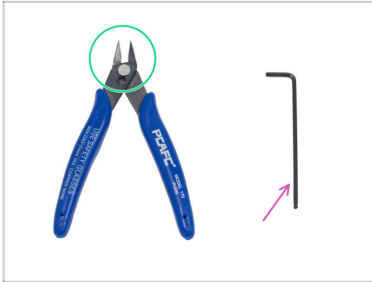
If your printer was manufactured before this change, the LCD panel is not user-serviceable. In that case, please contact our customer support for further assistance before attempting any repair.



Do not begin disassembly until instructed in the following steps.

- ◆ **Before you begin, make sure there is no filament loaded in the printer.**

STEP 2 Tools necessary for this guide



- **For this guide, please prepare:**
- Cutting pliers for cutting zip ties
- ⚠ **Wear safety glasses when cutting the zip ties.**
- 2.5mm Allen key (ball end is not required)

STEP 3 Unplugging the printer



⚠ Warning: Before you proceed with any further steps, **turn the printer OFF and unplug it from the electricity.**

- Locate the power switch on the rear right of the printer.
- Flip the power switch to '0' to turn the printer OFF.
- Unplug the power cable from the printer. Be sure to press the yellow lock on the plug before pulling.

⚠ Don't pull on the cable itself; always pull directly on the plug.

STEP 4 Removing the LCD control panel



- ◆ From the rear side of the LCD control panel, detach the PTFE tube and let it hang loosely.
 - ⓘ The PTFE tube is magnetically attached to the LCD assembly. Carefully pull it off.
- ⚠ **Hold the assembly firmly to prevent it from falling during disassembly.**
 - ⓘ The procedure requires you to hold the LCD control panel assembly in your hand while disconnecting it from the printer.
- ◆ Remove the two M3 screws from the side of the assembly.
- ◆ Carefully tilt the LCD control panel assembly away from the printer to access the LCD cables.

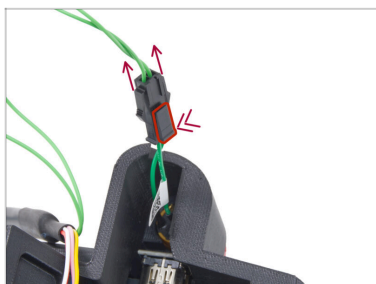
STEP 5 Disconnecting the cables



Keep holding the LCD control panel assembly.

- Carefully cut the zip ties securing the HDMI and USB-C cables.
 - ⚠ Wear safety glasses when cutting the zip ties.
 - ⚠ Avoid cutting the cables!
- Pull both cables out of their connectors.
- Press the locking tab on the filament sensor cable connector and gently pull the connector upward to disconnect it.
- Pull the PE cable connector straight upward.
 - **Do not pull on the cable** - grip the connector itself.

STEP 6 Disconnecting the emergency stop button



- Carefully unplug the two connectors from the emergency stop button by pressing the locking tab.
- **Do not pull on the cables** - grip the connectors themselves.
- Remove the LCD control panel from the printer.
- ⓘ Dispose of the parts in accordance with your country's electronic waste recycling regulations.

STEP 7 New LCD control panel: parts preparation



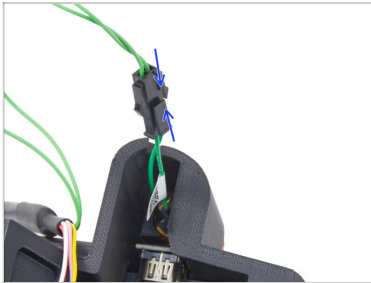
◆ **For the following steps, please prepare:**

◆ HT90 LCD control panel (1x) *new one*

ⓘ Recommendation: Keep the protective film on the LCD screen throughout the assembly process.

◆ M3x18 screw (2x) *you removed earlier*

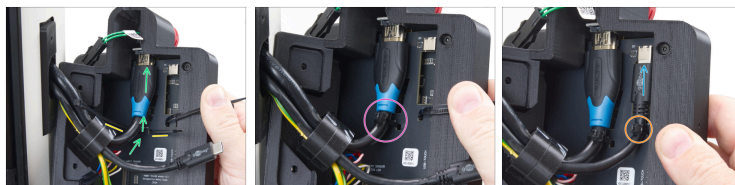
STEP 8 Connecting the emergency stop button



◆ Plug the emergency stop cable into the button connector.

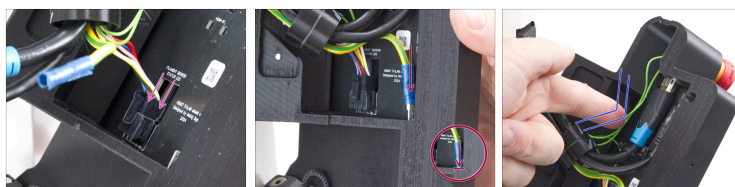
◆ Ensure the connectors are **fully engaged** to confirm a proper connection.

STEP 9 Connecting the LCD cables



- ◆ Note the pre-threaded zip ties on the LCD board.
- ◆ Route the HDMI cable **over** the left zip tie and connect it to the HDMI port. **Make sure the connector is fully seated.**
- ◆ Tighten the zip tie to secure the cable in place.
 - ◆ Cut off the excess length of the zip tie. **Avoid cutting the cables.**
- ⚠ **Wear safety glasses when cutting the zip ties.**
- ◆ Route the USB-C cable in the same way **over** the right zip tie and connect it to the USB-C port.
- ◆ Tighten the zip tie to secure the cable in place.
 - ◆ Cut off the excess length of the zip tie. **Avoid cutting the cables.**

STEP 10 Connecting the PE cable



- ✦ Plug the filament sensor cable in until it clicks, indicating a secure connection.
- ✦ Connect the PE cable to the PE connector by sliding it fully down.
- ✦ Push the emergency stop button cables fully inside to prevent them from being pinched when closing the display onto the printer.

STEP 11 Mounting the LCD control panel



- ✦ Line up the LCD control panel assembly with the holes on the LCD control panel holder on the printer.
- ✦ Place the LCD assembly onto the printer, **ensuring that no cables are pinched.**
- ✦ Secure the LCD control panel in place using two M3x18 screws. Tighten gently, but firmly.

STEP 12 Attaching the PTFE tube



- Attach the magnetic end of the PTFE tube to the filament sensor until it snaps into place.

STEP 13 Connecting the printer



- Plug the power cable completely into the printer.
 - You'll feel the yellow locking tab click into place, confirming the connector is fully inserted.
- Flip the switch to "I" to turn the printer ON.
- Ensure the **emergency stop button is unlocked**; otherwise, the printer won't turn on.

STEP 14 Final check



- With the printer now powered on, **observe its startup sequence.** The printer should proceed to its ready state without issue.

Inspect:

- The LED status indicator is **illuminating white.**
- The **touchscreen is functioning properly.**
- The **filament sensor correctly indicates filament loading and unloading.**



If any function is not working, verify the cable connections again.
