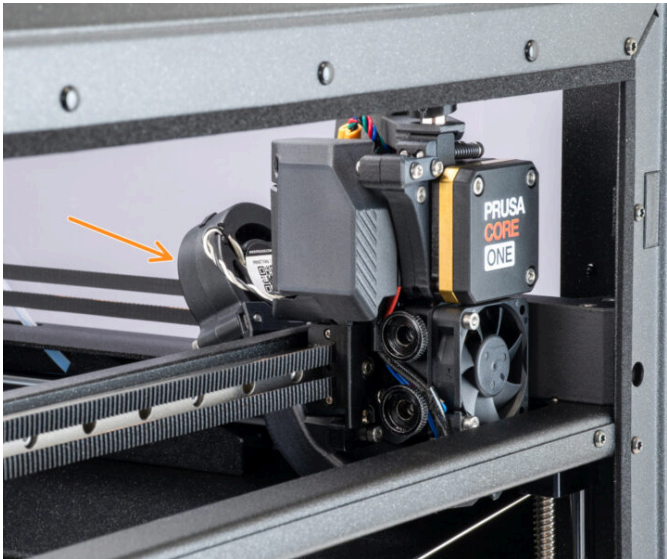


Table of Contents

How to replace the print fan (CORE One)	3
Step 1 - Introduction	4
Step 2 - Introduction components	5
Step 3 - Tools necessary for this chapter	5
Step 4 - Printer Preparation (Part 1)	6
Step 5 - Printer Preparation (Part 2)	7
Step 6 - Top Cover Removal	7
Step 7 - Heatbed Protection	8
Step 8 - Nextruder Uncovering	9
Step 9 - Removing the cables	9
Step 10 - Print fan removal	10
Step 11 - Print fan parts preparation	10
Step 12 - Attaching the print fan	11
Step 13 - Nextruder cover	12
Step 14 - Top Cover	13
Step 15 - Turning the Printer On	13
Step 16 - Final check	14

How to replace the print fan (CORE One)



help.prusa3d.com/g934717

Scan the QR code to
display the latest
version of this
chapter.

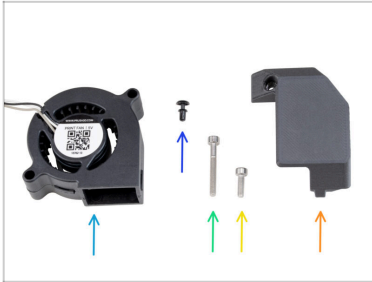


STEP 1 Introduction



- ✦ This guide will take you through the **print fan** replacement on your **Prusa CORE One**.
- ✦ All necessary parts are available in our eshop prusa3d.com.
- ⓘ Note that you have to be logged in to have access to the spare parts section.

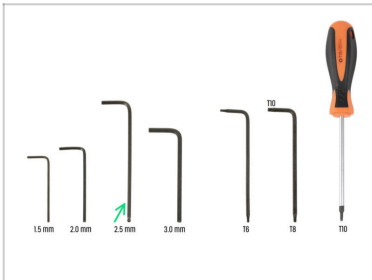
STEP 2 Introduction components



● In the following instructions, you will encounter these parts. To avoid confusion, here's how they will be referred to throughout the manual:

- Print fan
- Nylon rivet
- Screw M3x25
- Screw M3x10
- Print-head-cover-left

STEP 3 Tools necessary for this chapter



● For this chapter, please prepare:

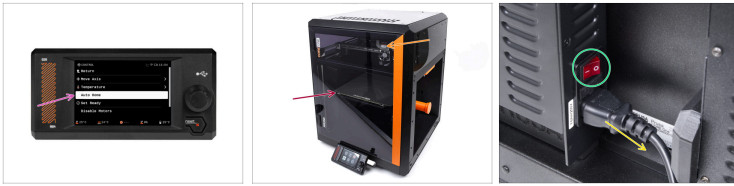
- 2.5mm Allen key

STEP 4 Printer Preparation (Part 1)



- ❖ Close the printer's door.
- ❖ Unload the filament. Visit the menu *Filament* and select *Unload filament*.
- ❖ Unload the filament from the printer.
- ❖ Remove the filament spool from the printer.
- ⚠ **Ensure the printer has completely cooled down.**
 - ❖ On the printer screen, navigate to *Preheat* -> *COOLDOWN* and wait for the temperatures to drop to ambient levels. This may take several minutes.

STEP 5 Printer Preparation (Part 2)



- ◆ Open the menu **Control -> Auto Home**.
- ◆ Wait until autohoming is complete.
- ◆ Open the menu **Control -> Move Axis -> Move Z** and set it to **100 mm** or more.
- ◆ Wait until the heatbed moves down.
- ◆ Turn the printer off using the switch on the back.
- ◆ Disconnect the printer from power.

STEP 6 Top Cover Removal



- ◆ Open the printer. From the inside, reach for the nylon rivets on the front right of the top cover. Push it out to unlock it.
- ◆ Then, remove the rivet from the outside.
- ◆ Remove the remaining nylon rivets on the top cover using the same technique.
- ◆ Remove the top cover.

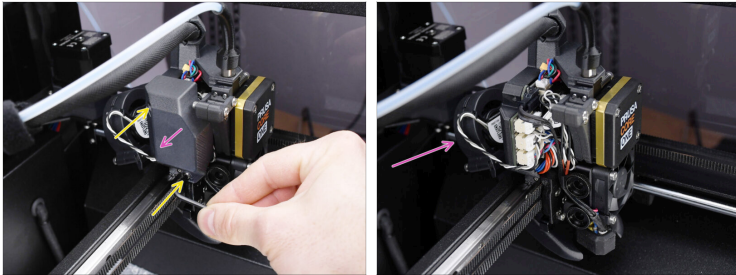
STEP 7 Heatbed Protection



⚠ Before proceeding any further, it is recommended to protect the heatbed first!

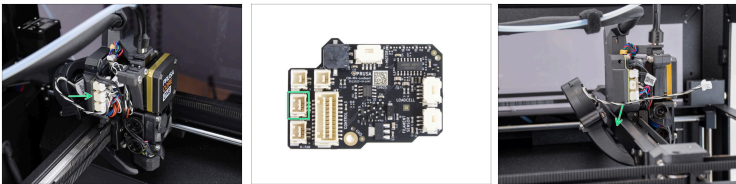
- Use a piece of fabric or other material thick enough to cover the heatbed. This will ensure you won't damage (scratch) the surface during the process.

STEP 8 Nextruder Uncovering



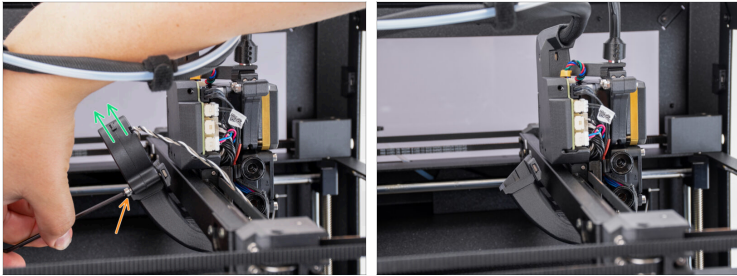
- ◆ Let's move onto the left side of the Nextruder.
- ◆ Using the 2.5mm Allen key, remove the M3x10 screw at the top, holding the side cover.
- 📌 Some of the earliest CORE One printers might have two M3x10bT screws instead. In this case, use the T10 screwdriver instead.
- ◆ Remove the cover.

STEP 9 Removing the cables



- ⚠ Each connector has a safety latch. **It is necessary to press the latch before disconnecting.** Otherwise, the connector may get damaged.
- ◆ Disconnect the print fan cable and pull it out of the cable groove.

STEP 10 Print fan removal



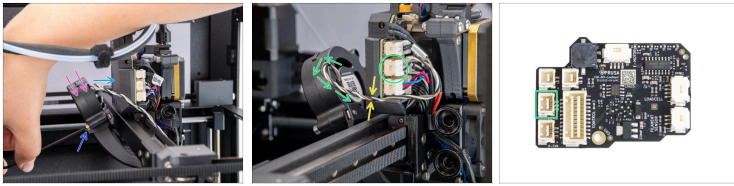
- Remove the M3x25 screw holding the print fan.
- Remove the print fan.

STEP 11 Print fan parts preparation



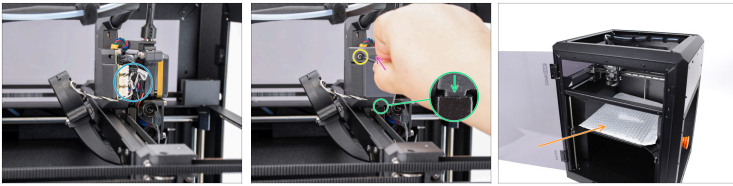
- For the following steps, please prepare:
- Print fan (1x) *new one*
- i** Can be obtained on Prusa E-shop

STEP 12 Attaching the print fan



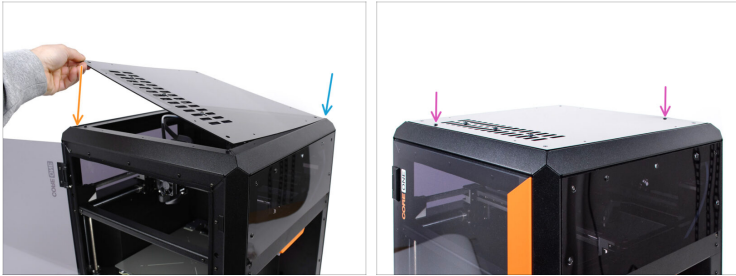
- ◆ Insert the print fan into the fan-shroud as shown. See the correct orientation of the parts.
- ◆ Make sure the cable is pointing to the front.
- ◆ Attach the print fan to the fan-shroud using one M3x25 screw.
- ◆ Guide the hotend fan cable through the channel in the plastic cover.
- ◆ Create a small loop with the print fan cable in the cable area and plug it into the middle connector in the LoveBoard.

STEP 13 Nextruder cover



- ◆ Organize the cables to ensure they do not protrude.
- ◆ Attach the cover to the left side of the Nextruder assembly.
 - ◆ Hook it at the bottom first.
 - ◆ Push it towards the Nextruder.
- ◆ Fix the cover in place using the M3x10 screw.
- ◆ Remove the protective material from the heatbed.

STEP 14 Top Cover



- Now, we can reinstall the top cover.
- Align the cover with the metal frame in the far-right corner.
- Align the cover with the recess in the front part as well
- Secure the cover in place using two nylon rivets in the marked openings.

STEP 15 Turning the Printer On



- Close the door.
- Connect the printer to electricity.
- Turn the printer on.

STEP 16 Final check



- 🟠 The fan replacement is finished. Verify your extruder is assembled as seen in the picture.
- 🟠 To test out the print fan functionality, visit the menu *Control -> Calibrations & Tests -> Fan test*.
- 📌 Great job! You can now resume using your printer.
