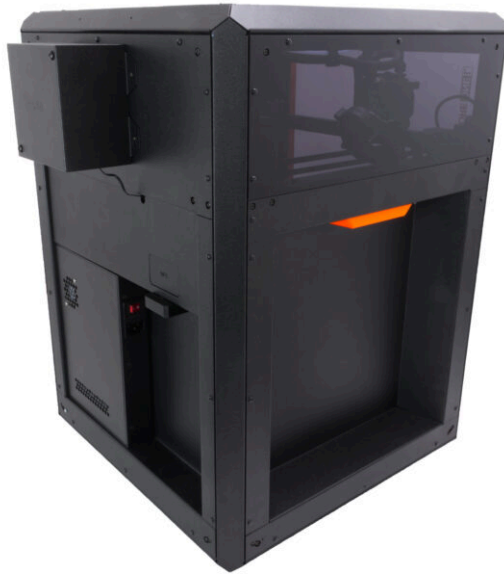


Table of Contents

How to install the Advanced Filtration (CORE One L)	3
Step 1 - Introduction	5
Step 2 - Tools necessary for this guide	6
Step 3 - Preparing the printer	6
Step 4 - Advanced filtration: parts preparation	7
Step 5 - Installing the blower	8
Step 6 - Installing the sealing foam	9
Step 7 - Inserting the HEPA filter	10
Step 8 - Mounting the filtration assembly	11
Step 9 - Removing the Wi-Fi module	12
Step 10 - Removing the electronics covers	13
Step 11 - Connecting the blower cable	13
Step 12 - Covering the electronics	14
Step 13 - Attaching the Wi-Fi module	15
Step 14 - Turning the printer on	15
Step 15 - Firmware INFO	16
Step 16 - Well done!	17

How to install the Advanced Filtration (CORE One L)



help.prusa3d.com/g944790


**Scan the QR code to
display the latest
version of this
chapter.**




STEP 1 Introduction




- ◆ This guide will take you through the installation of the **advanced filtration** on your **Prusa CORE One L**.

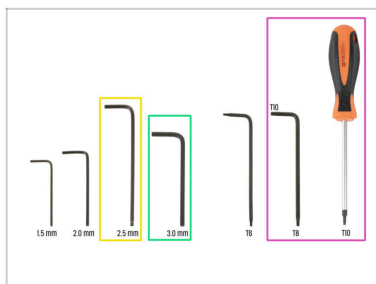
 If you are installing the Advanced Filtration System on **Prusa CORE One**, please follow the instructions in the corresponding manual **How to install Advanced Filtration (CORE One)**

- ◆ All necessary parts are available in our eshop prusa3d.com.

 Note that you have to be logged in to have access to the spare parts section.

 Keep all the fasteners and parts that you remove from the printer during the process at hand; they will be reused.

STEP 2 Tools necessary for this guide



- For this chapter, please prepare:
- 2.5mm Allen key
 - 3.0mm Allen key
 - T10 torx key / T10 torx screwdriver

STEP 3 Preparing the printer



- Open the menu **Control -> Move Axis -> Move Z** and move the heatbed all the way down.
- Wait until the heatbed moves down.
- From the rear side of the printer, unplug the PSU cable.
- Flip the power switch OFF (symbol "O").

STEP 4 Advanced filtration: parts preparation



For the following steps, please prepare:

- Filtration case (1x)**
- High pressure blower (1x)**
- HEPA filter (1x)**
- Sealing foam (1x)**
- M5x6r screw (2x)**
- M3x4rT screw (4x)**

STEP 5 Installing the blower



- ✿ Insert the blower into the filtration case with the air flow opening facing the grid on the case.
- ✿ Ensure that the blower cable is positioned on top and not trapped underneath.
- ✿ From underneath the filtration case, align the cover and blower holes.
- ✿ Use the 3.0mm Allen key to secure the blower with the M5x6r screw.
 - ✿ **The hole is not threaded-** expect slight resistance. Push on the blower from the inside to help.
 - ⚠ **Do not overtighten;** the tapped thread may be stripped.
- ✿ Use the same process for the other M5x6r screw





STEP 6 Installing the sealing foam



- ◆ Untie the blower cable harness.
- ◆ Route the blower cable next to the blower case and out through the oval hole above the grid.
- ◆ Insert the sealing foam as shown: With the corner cutout aligned to the same side as the cable outlet.
 - ⚠ **Make sure the foam protrusions face the correct direction.**
- ◆ Place the sealing foam over the blower. **Ensure that the protrusions fill the corner gaps** around it.
- ◆ Check that the blower cable is routed straight and fits properly inside the foam cutout.

STEP 7 Inserting the HEPA filter



-  **Remove the HEPA filter from its packaging.**
-  Insert the HEPA filter into the filtration case assembly.
-  **Ensure that the filter is oriented correctly.** Use the printed text on the filter as a reference.
-  The filter must sit flush with the edges of the filtration case.

STEP 8 Mounting the filtration assembly



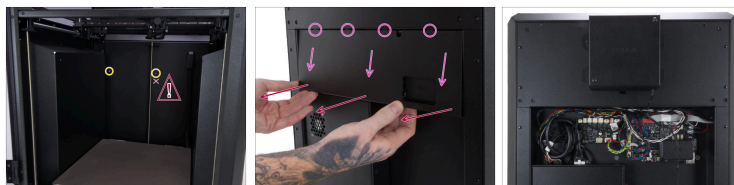
- ◆ Insert four M3x4rT screws on the back of the printer.
- ◆ **Do not tighten the screws completely.** Leave approximately a 2 mm (0.08 in) gap.
- ◆ Mount the filtration assembly onto the screws using the large holes in the filtration assembly.
- ◆ Slide the filtration assembly downward to lock it into its final position on the screws.
- ◆ Tighten all four M3x4rT screws.

STEP 9 Removing the Wi-Fi module



- ◆ Locate the Wi-Fi module at the rear of the printer.
- ◆ Use the 2.5 mm Allen key to remove the M3x14 screw
- ◆ Note that the Wi-Fi module is connected to the electronics with eight spikes.
 - ⚠ **Make sure not to bend the connectors when removing the module.**
- ◆ Gently pull the Wi-Fi module **straight downward** to remove it from the printer.

STEP 10 Removing the electronics covers



- On the inside of the printer, use the Torx T10 screwdriver to remove the two M3x4rT screws that hold the electronics cover in place.

⚠ Only remove the highlighted top screw in the middle. Do not touch the lower screw.

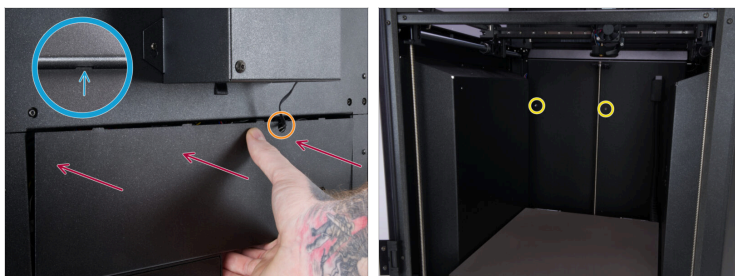
- Pull slightly downward to release the top of the cover from the docks in the printer.
- Carefully, yet firmly, pull the bottom of the cover towards you to remove it.


STEP 11 Connecting the blower cable







- Connect the blower cable to the slot labeled **FAN3** on the xBuddy extension board.
- Ensure that the safety latch clicks in and holds the connector in place.

STEP 12 Covering the electronics



 While re-attaching the electronics cover, ensure that all cables are covered and that no cables are pinched!

-  Place the electronics cover back on the rear of the printer.
-  Guide the filtration cable through the U-shaped cutout in the cover. **Avoid pinching the cable.**
-  Ensure that the top of the electronics cover slides into the four holes in the rear printer cover.
-  Secure the electronics cover in place with two M3x4rT screws from inside of the printer.

STEP 13 Attaching the Wi-Fi module



- ◆ Ensure that the Wi-Fi module is positioned correctly when plugging it into the connector.
- ⚠ **Make sure not to bend the connectors when attaching the module.**
- ◆ Push the Wi-Fi module **straight upward** to connect it to the printer.
- ◆ Use the 2.5 mm Allen key to tighten the M3x14 screw

STEP 14 Turning the printer on



- ◆ From the rear side of the printer, plug in the PSU cable.
- ◆ Flip the power switch ON (symbol "I").

STEP 15 Firmware INFO



- ◆ Starting with firmware version 6.3.1, a new menu option for the *Filtration Fan* is available.
- 📌 To update the firmware, follow the dedicated instructions available at **How to update firmware**.
- ◆ Navigate to your printer settings: *Settings* -> *Chamber Filtration* and select *Chamber Filtration [none]*.
- ◆ Enable *Advanced Filtration* mode or *DIY* mode if you have a custom filtration setup.
- ◆ The *Filtration Fan* option can be found in the menu:
 - ◆ **Idle mode:** *Control* -> *Temperature* -> *Filtration Fan*
 - ◆ **While printing:** *Tune* -> *Filtration Fan*
- ⓘ The *Filtration Fan* is set to *Auto* by default. Which means that it will automatically activate depending on the material in use.

STEP 16 Well done!



- ◆ **Congratulations!**
The Advanced Filtration for your Prusa CORE One L is successfully installed.
