

Tabla de Contenido

How to replace the Chamber fan (CORE One)

| | |
|--|----|
| | 3 |
| Paso 1 - Introduction | 4 |
| Paso 2 - Herramientas necesarias para este capitulo | 5 |
| Paso 3 - Printer preparation | 6 |
| Paso 4 - Retirando la cubierta superior de la impresora | 7 |
| Paso 5 - Protecting the heatbed | 8 |
| Paso 6 - Retirando la cubierta lateral | 9 |
| Paso 7 - Removing the side panel | 9 |
| Paso 8 - Removing back cover | 10 |
| Paso 9 - Removing xBuddy cover | 10 |
| Paso 10 - Disconnecting the cables | 11 |
| Paso 11 - Removing the chamber fans | 12 |
| Paso 12 - Preparing parts | 13 |
| Paso 13 - Placing the chamber fans | 14 |
| Paso 14 - Placing the fan grid assembly | 15 |
| Paso 15 - Securing the fans | 16 |
| Paso 16 - Connecting the cables | 17 |
| Paso 17 - Covering the buddy box | 18 |
| Paso 18 - Installing the back cover | 18 |
| Paso 19 - Installing the side cover | 19 |
| Paso 20 - Encendiendo la impresora | 19 |
| Paso 21 - Final check | 20 |

How to replace the Chamber fan (CORE One)

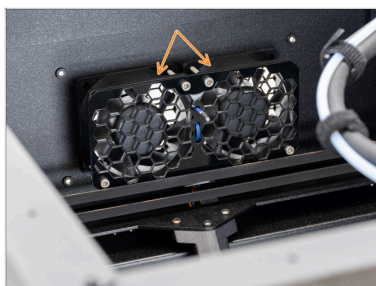


help.prusa3d.com/g944818

Escanea el código
QR para ver la última
versión de este
capítulo.

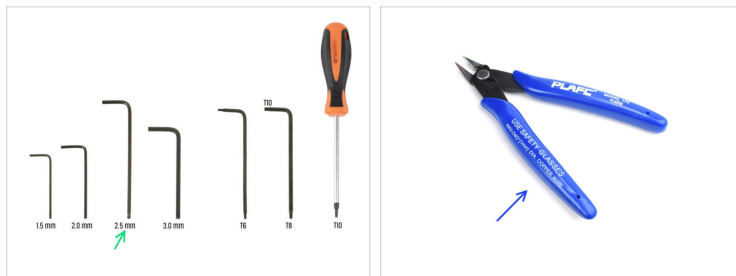


PASO 1 Introduction



- ◆ This guide will take you through the **chamber fan** replacement on your **Prusa CORE One**.
- ◆ All necessary parts are available in our eshop prusa3d.com.
- ⓘ Ten en cuenta que debes iniciar sesión para tener acceso a la sección de repuestos.
- 📌 Keep the fasteners and parts that you remove from the printer during the process at hand; they will be reused.

PASO 2 Herramientas necesarias para este capítulo



- Please prepare tools for this guide:
- 2.5mm Allen key
- Se recomienda el uso de alicates de corte plano como herramienta opcional.

PASO 3 Printer preparation



- ◆ Open the menu **Control -> Auto Home**.
- ◆ Wait until autohoming is complete.
- ◆ Open the menu **Control -> Move Axis -> Move Z** and set it to **100 mm** or more.
- ◆ Espera hasta que la base calefactable se mueva hacia abajo.
- ◆ Apaga la impresora mediante el interruptor situado en la parte posterior.
- ◆ Desconecta la impresora de la corriente.

PASO 4 Retirando la cubierta superior de la impresora



- Abre la impresora. Desde el interior, busca el remache de nylon situado en la parte delantera derecha de la cubierta superior. Empújalo hacia fuera para desbloquearlo.
- A continuación, retira el remache desde el exterior.
- Retira los remaches de nylon restantes de la cubierta superior utilizando la misma técnica.
- Retira la cubierta superior.

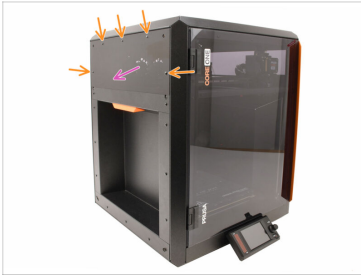
PASO 5 Protecting the heatbed



⚠ Before proceeding any further, it is recommended to protect the heatbed first!

- Utiliza un trozo de tela, cartón, plástico de burbujas o cualquier material blando para cubrir la base calefactable. Así evitarás dañar la base calefactable o la lámina de impresión durante el proceso.

PASO 6 Retirando la cubierta lateral



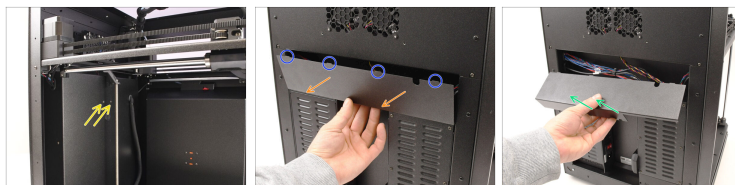
- Remove the five nylon rivets holding the plastic side cover.
- Recomendamos utilizar alicates de corte plano para levantar la parte superior del remache y desbloquearlo. A continuación, retira la parte inferior del remache.
- Retira la cubierta lateral de plástico.

PASO 7 Removing the side panel



- Remove the eleven marked nylon rivets holding the side sheet metal panel.
- Remove the panel.

PASO 8 Removing back cover



- On the inside of the printer, remove two M3x4rT screws holding the back cover.
- On the back of the printer, slide the center of the back cover down to disengage the four top tabs.
- Ensure the four tabs on top of the cover are disengaged from the metal chassis.
- Mueve la tapa ligeramente hacia atrás.
- Tira de la parte inferior de la cubierta hacia fuera mientras inclinas la parte superior hacia la impresora. Esto la desenganchará del haz de cables situado detrás.

PASO 9 Removing xBuddy cover



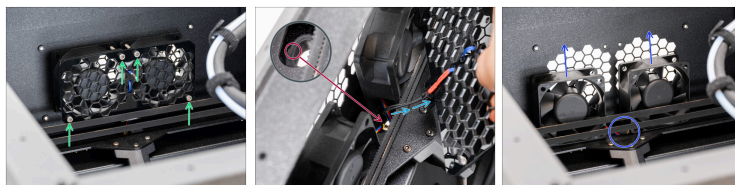
- Remove the six M3x4rT screws holding the xBuddy box cover.
- Retira la tapa deslizándola hacia fuera.

PASO 10 Disconnecting the cables



- ✿ Cut the zip tie. Be careful not to cut any cables.
- ⬛ Disconnecting the connectors.
 - ⚠ Each connector has a **safety latch**. It is necessary to press the latch before pulling the cables out. Otherwise, the **connector may get damaged**.
 - ⬢ Press the safety latch and disconnect the fan thermistor.
 - ⬢ Press the safety latch and disconnect both chamber fan cables.
- ⬢ Remove the cables from the xBuddy box.
 - 📌 There are grommets in the holes in the xBuddy box. The grommets must stay in place.

PASO 11 Removing the chamber fans



- ◆ Now turn the printer around. The following steps will take place inside the printer.
- ◆ Remove the four M3x30 screws.
- ◆ Remove fan grid assembly with thermistor and both fans.

⚠ There is a grommet in the hole on the back panel. The grommet must stay in place.

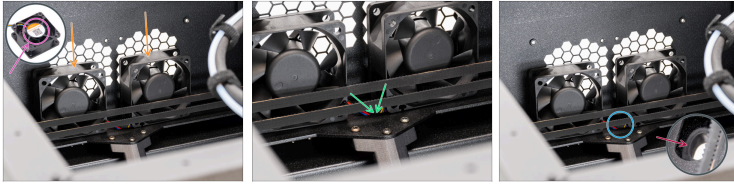
- ◆ Pull out the fan grid assembly with the thermistor. Carefully pull the thermistor cable out through the holes in the back panel and in the coreXY.
- ◆ Remove both fans. Carefully pull the cables out through the holes on the back panel and the coreXY.
- ① Move the turbines you are replacing away from your workspace to prevent mixing them up with the new parts.

PASO 12 Preparing parts



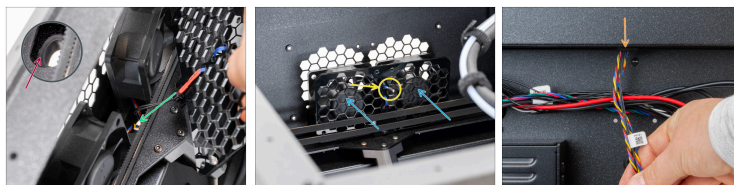
- Para los siguientes pasos, prepara:
- Chamber fan (1x or 2x depending on your needs)
new one or from the previous steps
- ⓘ Can be purchased on Prusa E-shop
- Zip tie (1x)

PASO 13 Placing the chamber fans



- ✦ Place both chamber fans on top of the coreXY assembly.
- ✦ The side of the fans without the sticker must be facing forward.
- ✦ Orienta los ventiladores de forma que los cables pasen de las esquinas al centro.
- ✦ The grommet in the back panel must stay in place.
- ✦ Push the fan cables through the oval hole in the coreXY assembly.

PASO 14 Placing the fan grid assembly



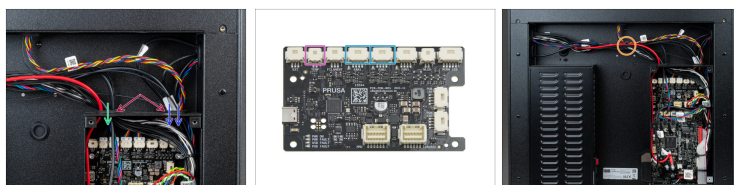
- The grommet in the back panel must stay in place.
- Guide the thermistor cable through the hole in the coreXY assembly, towards the back panel.
- Place the fan grid assembly in front of the chamber fans.
 - Install the fan grid with the thermistor facing forward. **The metal part of the sensor should not touch the grid.**
- From the back of the printer, ensure that all cables are fully routed through the holes. Verify that the grommet remains in place; if not, replace it.

PASO 15 Securing the fans



- ◆ Insert one M3x30 screw through the fan cover and the chamber fan.
 - ◆ Attach the one screw to the back of the printer. Do not fully tighten yet.
 - ◆ Use your other hand to help guide the chamber fans into the correct position. Attach the three M3x30 screws through the fan cover and the chamber fans to the back of the printer. Do not tighten them yet.
 - ◆ Carefully tighten all four screws. **Keep the following in mind:**
 - ◆ The screws should be tightened just slightly. Check from the other side of the printer to ensure proper alignment.
- ⚠ Overtightening may damage the print fan grid.**

PASO 16 Connecting the cables



- ◆ Now turn the printer around. The following steps will take place at the back of the printer.
- ◆ The grommets in the xBuddy box must stay in place.
- ◆ Route the print fan cables through the right hole on top of the xBuddy box.
 - ◆ Connect the cables to the FAN1 and FAN2 connector. It does not matter which cable is connected to which connector.
- ◆ Route the thermistor cable through the left hole at the top of the buddy box.
 - ◆ Connect the cable to the TEMP connector.
- ◆ Secure all cables with a zip tie.

PASO 17 Covering the buddy box



- ◆ Cubre con cuidado la caja xBuddy deslizando primero la parte doblada de la cubierta dentro de la caja.
- ◆ Fija la tapa de la caja xBuddy con los seis tornillos M3x4rT.

PASO 18 Installing the back cover



- ◆ Align the rear sheet metal cover so that the cables run over the "tray" part.
- ◆ Coloca la cubierta de chapa posterior en el hueco. Empújala hacia la impresora y, a continuación, muévela hacia arriba para encajarla.
- ◆ Hay cuatro pestañas que deben encajar en el chasis de la impresora.
- ◆ Fija la cubierta posterior en su sitio utilizando dos tornillos M3x4rT desde el interior de la impresora.

PASO 19 Installing the side cover



- Añade el panel de chapa lateral a la impresora y alinéalo con la abertura.
- Fija el panel en su sitio con 11 remaches de nylon en los puntos marcados.
- Coloca la cubierta de plástico en la parte superior y alinéala con la abertura.
- Fijala en su sitio con 5 remaches de nylon.

PASO 20 Encendiendo la impresora



- Conecta la impresora a la corriente.
- Enciende la impresora mediante el interruptor situado en la parte posterior.

PASO 21 Final check



- ◆ The chamber fan replacement is finished. Compare your assembly with the reference image to ensure everything is positioned correctly.
- ◆ To test out the chamber fan functionality, visit the menu **Control -> Calibrations & Tests -> Fan Test**
- ⓘ Great job! You can now resume using your printer.
