

# Table of Contents

<b>How to replace a Hotend Heater (CORE One L)</b>	<b>3</b>
.....	3
Step 1 - Introduction .....	4
Step 2 - Tools necessary for this guide .....	4
Step 3 - Printer preparation (part 1) .....	5
Step 4 - Printer preparation (part 2) .....	5
Step 5 - Removing the printer top cover .....	6
Step 6 - Protecting the heatbed .....	7
Step 7 - Accessing the hotend cables .....	7
Step 8 - Disconnecting the hotend cables	
.....	8
Step 9 - Removing the hotend assembly .....	8
Step 10 - Silicone Sock Removal .....	9
Step 11 - Heater Removal .....	9
Step 12 - Heater Preparation .....	10
Step 13 - Heater Assembly .....	10
Step 14 - Inserting the hotend .....	11
Step 15 - Connecting the hotend cables .....	11
Step 16 - Guiding the hotend cables .....	12
Step 17 - Attaching the Printhead-cover-left	
.....	12
Step 18 - Attaching the printer top cover .....	13
Step 19 - Turning the printer on .....	14
Step 20 - Final check .....	15

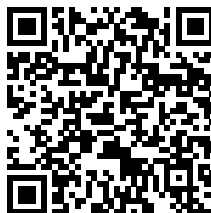


# How to replace a Hotend Heater (CORE One L)



[help.prusa3d.com/g944822](https://help.prusa3d.com/g944822)

Scan the QR code to  
display the latest  
version of this  
chapter.



## STEP 1 Introduction



- This guide will take you through the **Hotend heater** replacement on your **Original Prusa CORE One L**.

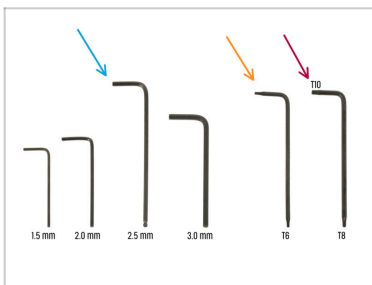
**i** All necessary parts are available in our eshop [prusa3d.com](https://prusa3d.com).



Note that you have to be logged in to have access to the spare parts section.

---

## STEP 2 Tools necessary for this guide



- **Please prepare tools for this guide:**

- 2.5mm Allen key
- T6 Key
- T10 Key / Screwdriver

### STEP 3 Printer preparation (part 1)



- 🟠 Close the door.
- 🟡 Navigate the screen to **Filament -> Unload filament**
- 🟢 Unload the filament from the printer.
- ⬛ Remove the filament spool from the printer.
- ⚠️ **Ensure that the printer has completely cooled down.**
  - ⬛ On the printer screen, navigate to **Preheat -> Cooldown** and wait for the temperatures to drop to ambient levels. This may take several minutes.

### STEP 4 Printer preparation (part 2)



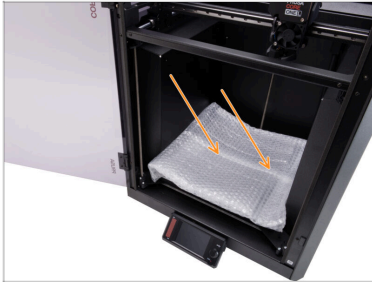
- 🟡 Open the menu **Control -> Move Axis -> Move Z** and move the heatedbed all the way down.
- 🟠 Wait until the heatedbed moves down.
- 🟢 From the rear side of the printer, unplug the PSU cable.
- 🟢 Flip the power switch OFF (symbol "O").

## STEP 5 Removing the printer top cover



- ◆ Open the door and reach in to the front of the top cover.
- ⓘ The cover is held in place by a set of plastic security latches.
- ◆ Locate two of the plastic latches at the bottom front of the cover. Squeeze them together simultaneously.
- ◆ Lift the front of the cover just enough to unhook it from the printer and pull the cover 2 cm / 0.8 inch towards you.
- ◆ Remove the top cover from the outside.

## STEP 6 Protecting the heatbed



**!** Before proceeding any further, it is recommended to protect the heatbed first!

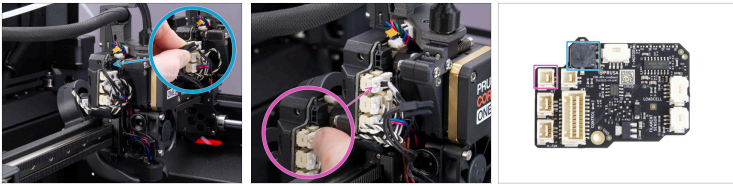
- Use a piece of fabric, cardboard, bubble wrap, or any soft material to cover the heatbed. This will prevent damaging the heatbed/print sheet during the process.


## STEP 7 Accessing the hotend cables





- Adjust the printer so you have access to the left side of the Nextruder.
- Using the 2.5mm Allen key, remove the M3x10 screw on the top of the Printhead-cover-left (cover).
- Unhook the cover from the bottom slot and remove the cover.

## STEP 8 Disconnecting the hotend cables







 Each connector has a safety latch. **It is necessary to press the latch before disconnecting.** Otherwise, the connector may get damaged.

-  Press the safety latch to disconnect the hotend heater cable.
-  Press the safety latch to disconnect the hotend thermistor cable.

## STEP 9 Removing the hotend assembly



-  Unhook the hotend cables from the plastic cable guide behind the two thumb screws.
-  Hold the hotend with your hand to prevent it from falling down.
-  Use your other hand to loosen the two thumb screws with a few turns. **Do not remove them completely.**
-  Pull the hotend assembly down from the heatsink.

## STEP 10 Silicone Sock Removal



- Remove the Silicone sock, if you are using one.

---

## STEP 11 Heater Removal



- Using the T6 Torx key loose the marked screws holding the heater.
- Remove the heater from the heaterblock.

## STEP 12 Heater Preparation



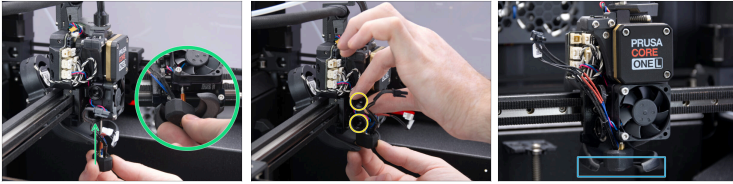
- **For the following steps, prepare:**
- New hotend heater (1x)
- New grub screws M3x4bT (2x)

## STEP 13 Heater Assembly



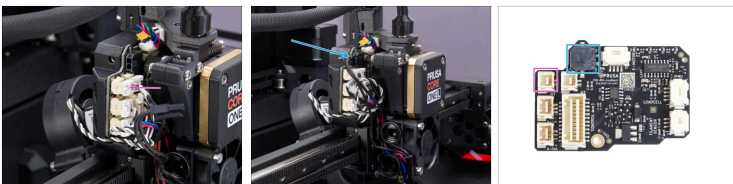
- Insert new grub screws and screw them in using the TX6 key. A few turns are enough for now.
- Insert the new heater all the way into the heaterblock.
- Align the bottom surface of the heater with the bottom surface of the heaterblock.  
**⚠ Make sure your heater is aligned with the bottom side of the heaterblock.**
- Using the longer side of the TX6 key, gently tighten two grub screws while keeping the heater in position. Do not overtighten.
- Reinstall the silicone sock, if you are using one.

## STEP 14 Inserting the hotend



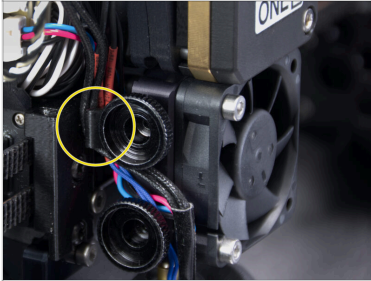
- ◆ Locate the hole on the bottom of the extruder heatsink and insert the hotend assembly.
- ⓘ Ensure that there is enough free space between the new hotend assembly and the fan shroud.
- ◆ Tighten both thumbscrews once the hotend assembly is completely inserted in the nextruder.
- ◆ Double-check that the hotend is fully inserted into the heatsink. It has to align with the fan shroud.

## STEP 15 Connecting the hotend cables



- ◆ Connect the hotend thermistor cable to the top left slot on the love board.
- ◆ Connect the hotend heater to the black slot on the upper part of the love board.

## STEP 16 Guiding the hotend cables



- Insert the hotend cables behind the plastic cable guide hook. Guide the thermistor cable first, then the hotend heater cable.

## STEP 17 Attaching the Printhead-cover-left



- Organize the cables to ensure they are not sticking out to prevent pinching them once you attach the Printhead-cover-left (cover).
- Ensure that the print fan cable is led through the ridge in the Printhead-cover-rear.
- Tip: Prepare the M3x10 screw and set it up in the cover before attaching the cover.
- Insert the cover into the bottom slot in the Printhead-cover-rear first.
- Place the cover on the Nextrunder.
- Fix the cover in place using the M3x10 screw.
- Remove the protective material from the heatedbed.

## STEP 18 Attaching the printer top cover



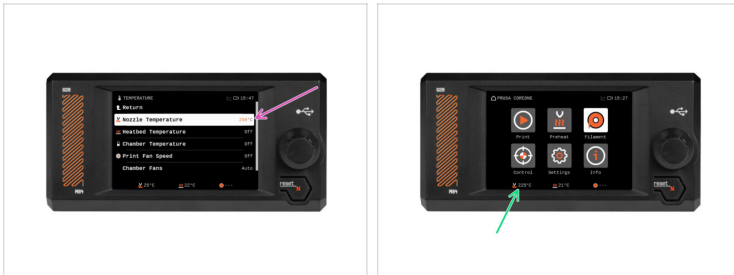
- Place the cover on the printer with the ventilation grille in the front and slide the cover towards the back.
- Align the cover so that the two plastic latches at the rear of the cover slide in and lock the cover in place.
- Once the back is secured in place, lower the front of the cover and gently push the cover down, so the front latches will snap in place.

## STEP 19 Turning the printer on



- ⚠ Make sure that the printer is placed in a stable place where no ambient vibrations are transmitted (for example, where other printers are printing).
- Close the door.
- From the rear side of the printer, plug in the PSU cable.
- Turn the power switch ON (symbol "I").

## STEP 20 Final check



- ◆ To verify the correct connection of the cables, navigate the screen to **Control -> Temperature -> Nozzle Temperature** and set it to above 200°C.
- ◆ Return to the main screen and check the bottom bar to ensure the temperature is rising as expected.



**Great job!**



---

---

---

---

---

---

---

---

---

---



---

---

---

---

---

---

---

---

---

---

