

# Table of Contents

<b>How to replace the print fan (CORE One L) .....</b>	<b>3</b>
Step 1 - Introduction .....	4
Step 2 - Tools necessary for this guide .....	4
Step 3 - Printer preparation (part 1) .....	5
Step 4 - Printer preparation (part 2) .....	5
Step 5 - Removing the printer top cover .....	6
Step 6 - Protecting the heatbed .....	7
Step 7 - Accessing the hotend fan cable .....	7
Step 8 - Disconnecting the hotend cables .....	8
Step 9 - Print fan removal .....	8
Step 10 - Print fan parts preparation .....	9
Step 11 - Attaching the print fan .....	10
Step 12 - Attaching the Printhead-cover-left .....	11
Step 13 - Attaching the printer top cover .....	12
Step 14 - Turning the printer on .....	13
Step 15 - Final check .....	14

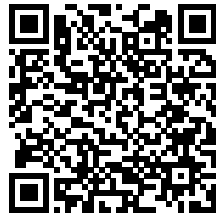


# How to replace the print fan (CORE One L)



[help.prusa3d.com/g944846](https://help.prusa3d.com/g944846)

Scan the QR code to  
display the latest  
version of this  
chapter.

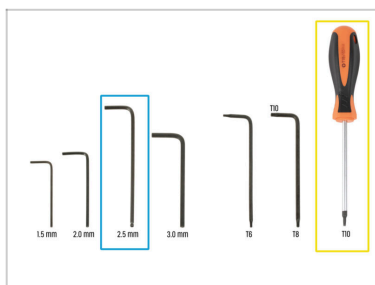


## STEP 1 Introduction



- ◆ This guide will take you through the **print fan** replacement on your **Prusa CORE One L**.
- ◆ All necessary parts are available in our eshop.  
📌 Note that you have to be logged in to have access to the spare parts section.
- ⓘ Keep all the fasteners that you remove from the printer during the replacement process at hand; they will be reused.

## STEP 2 Tools necessary for this guide



- ◆ **Prepare these tools for this guide:**
  - ◆ 2.5mm Allen key
  - ◆ T10 Screwdriver

### STEP 3 Printer preparation (part 1)



- 🟠 Close the door.
- 🟡 Navigate the screen to **Filament -> Unload filament**
- 🟢 Unload the filament from the printer.
- ⬛ Remove the filament spool from the printer.
- ⚠️ **Ensure that the printer has completely cooled down.**
  - ⬛ On the printer screen, navigate to **Preheat -> Cooldown** and wait for the temperatures to drop to ambient levels. This may take several minutes.

### STEP 4 Printer preparation (part 2)



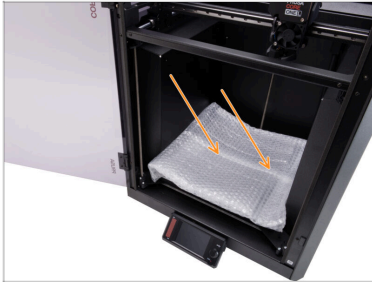
- 🟡 Open the menu **Control -> Move Axis -> Move Z** and move the heated bed all the way down.
- 🟠 Wait until the heated bed moves down.
- 🟢 From the rear side of the printer, unplug the PSU cable.
- 🟢 Flip the power switch OFF (symbol "O").

## STEP 5 Removing the printer top cover



- ◆ Open the door and reach in to the front of the top cover.
- ⓘ The cover is held in place by a set of plastic security latches.
- ◆ Locate two of the plastic latches at the bottom front of the cover. Squeeze them together simultaneously.
- ◆ Lift the front of the cover just enough to unhook it from the printer and pull the cover 2 cm / 0.8 inch towards you.
- ◆ Remove the top cover from the outside.

## STEP 6 Protecting the heatbed



**!** Before proceeding any further, it is recommended to protect the heatbed first!

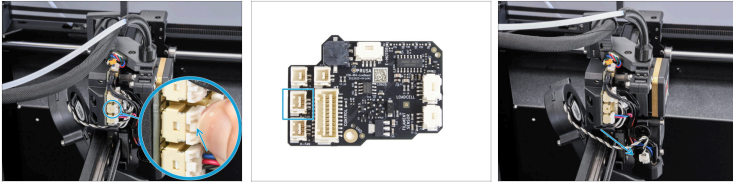
- Use a piece of fabric, cardboard, bubble wrap, or any soft material to cover the heatbed. This will prevent damaging the heatbed/print sheet during the process.


## STEP 7 Accessing the hotend fan cable




- Adjust the printer so you have access to the left side of the Nextruder.
- Using the 2.5mm Allen key, remove the M3x10 screw on top of the Printhead-cover-left (cover).
- Unhook the cover from the bottom slot and remove it.

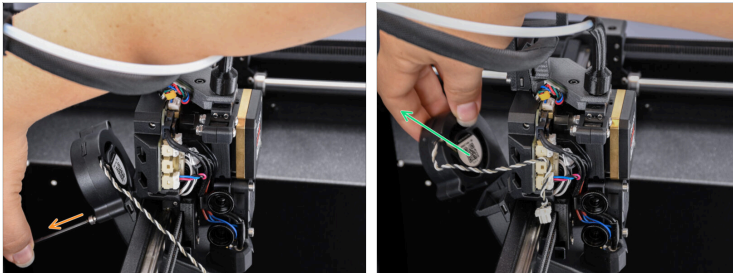
## STEP 8 Disconnecting the hotend cables





 Each connector has a safety latch. **It is necessary to press the latch before pulling the cables out.** Otherwise, the connector may get damaged.

-  Press the safety latch and pull the print fan cable out.

## STEP 9 Print fan removal



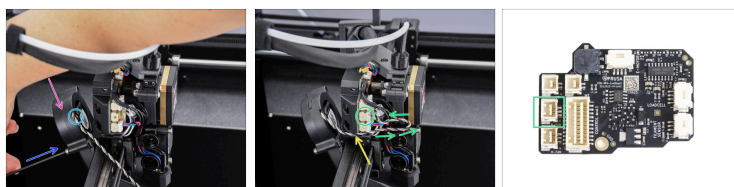
-  Remove the M3x25 screw holding the print fan.
-  Remove the print fan.

## STEP 10 Print fan parts preparation



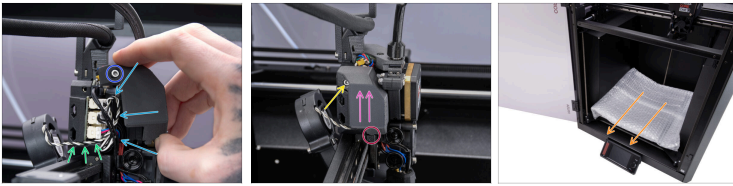
- ◆ For the following steps, please prepare:
- ◆ Print fan (1x)
  - ⓘ Can be obtained on Prusa E-shop.
- 📌 **Keep the removed old fan away** from the work area to avoid reinstalling it by mistake.

## STEP 11 Attaching the print fan



- ✿ Insert the print fan into the fan-shroud as shown. See the correct orientation of the parts.
- ◆ Make sure the cable is pointing to the front.
- ◆ Attach the print fan to the fan-shroud using one M3x25 screw. **Do not overtighten it.** It might damage the part.
- ◆ Guide the hotend fan cable through the channel in the plastic cover.
- ◆ Create a small loop with the print fan cable in the cable area and plug it into the middle connector in the LoveBoard.

## STEP 12 Attaching the Printhead-cover-left



- ◆ Organize the cables to ensure they are not sticking out to prevent pinching them once you attach the Printhead-cover-left (cover).
- ◆ Ensure that the print fan cable is led through the ridge in the Printhead-cover-rear.
- ◆ Tip: Prepare the M3x10 screw and set it up in the cover before attaching the cover.
- ◆ Insert the cover into the bottom slot in the Printhead-cover-rear first.
- ◆ Place the cover onto the nextruder.
- ◆ Fix the cover in place using the M3x10 screw.
- ◆ Remove the protective material from the heatbed.


## STEP 13 Attaching the printer top cover






- Place the cover on the printer with the ventilation grille in the front and slide the cover towards the back.
- Align the cover so that the two plastic latches at the rear of the cover slide in and lock the cover in place.
- Once the back is secured in place, lower the front of the cover and gently push the cover down, so the front latches will snap in place.

## STEP 14 Turning the printer on



 Make sure that the printer is placed in a stable place where no ambient vibrations are transmitted (for example, where other printers are printing).

-  Close the door.
-  From the rear side of the printer, plug in the PSU cable.
-  Turn the power switch ON (symbol "I").

## STEP 15 Final check



◆ To test out the print fan functionality, visit the menu **Control -> Calibrations & Tests -> Fan test.**

ⓘ The test will take just a moment.

📌 **Great job!** You just replaced the print fan on your PRUSA CORE One L.



---

---

---

---

---

---

---

---

---

---



---

---

---

---

---

---

---

---

---

---



---

---

---

---

---

---

---

---

---

---