

Table of Contents

How to replace the Accelerometer (CORE One L)	3
Step 1 - Introduction	4
Step 2 - Tools Required	4
Step 3 - Printer Preparation	5
Step 4 - Printer Preparation 2	5
Step 5 - Top Cover Removal	6
Step 6 - Heatbed Protection	7
Step 7 - PTFE Disconnection	7
Step 8 - Left Cover Removal	8
Step 9 - Print Head Preparation	8
Step 10 - Print Head Preparation 2	9
Step 11 - Accelerometer Removal	10
Step 12 - Accelerometer Preparation	10
Step 13 - Accelerometer Installation	11
Step 14 - Cable Guidance	11
Step 15 - Rear Cover Installation	12
Step 16 - Print Head Covering	12
Step 17 - Top Cover Attachment	13
Step 18 - Power Up	14
Step 19 - Final check	15

How to replace the Accelerometer (CORE One L)

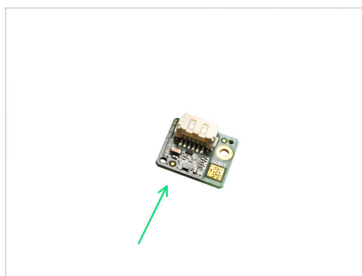


help.prusa3d.com/g947938

Scan the QR code to
display the latest
version of this
chapter.

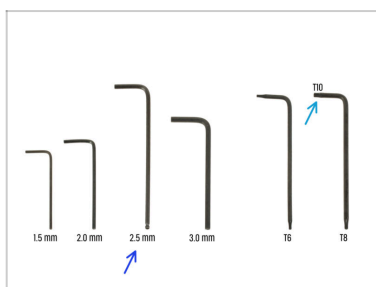


STEP 1 Introduction



- ◆ This guide will take you through the **Accelerometer replacement** on your Original Prusa **CORE One L**.
- ◆ All necessary parts are available in our eshop prusa3d.com.
- 📌 Note that you have to be logged in to have access to the spare parts section.

STEP 2 Tools Required



- ◆ **Prepare these tools for this guide:**
 - ◆ 2.5mm Allen key
 - ◆ T10 Key / Screwdriver

STEP 3 Printer Preparation



- 🟠 Close the door.
- 🟢 Navigate to menu **Filament** -> **Unload filament**
- 🟡 Pull out the filament.
- ⬛ Remove the filament spool from the printer.
- ⚠️ **Ensure that the printer has cooled down.**
 - ⬛ Navigate to **Preheat** -> **Cooldown** and wait for the temperatures to drop. This may take several minutes.

STEP 4 Printer Preparation 2



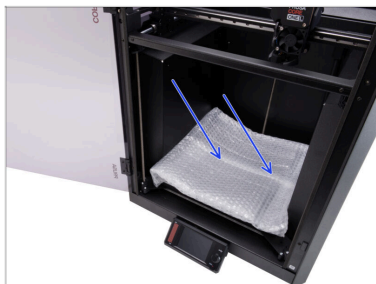
- 🟢 Open the menu **Control** -> **Move Axis** -> **Move Z** and move the heatbed all the way down.
- 🟠 Wait until the heatbed moves down.
- 🟢 Turn off the printer using the switch on the back.
- 🟡 Unplug the mains cable.


STEP 5 Top Cover Removal




- ◆ Open the door and reach in to the bottom side of the top cover.
- ⓘ The cover is held in place by a set of plastic latches.
- ◆ Locate two of the latches at the bottom front. Squeeze them together simultaneously.
- ◆ Lift the cover to unhook it. Pull the cover to the front.
- ◆ Remove the top cover.

STEP 6 Heatbed Protection





 Before proceeding, it is recommended to protect the heatbed!

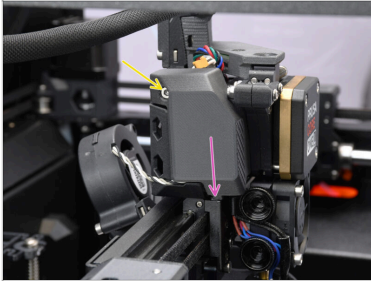
-  Use a piece of fabric, cardboard, bubble wrap, or another suitable material to cover the heatbed to prevent any damage.

STEP 7 PTFE Disconnection



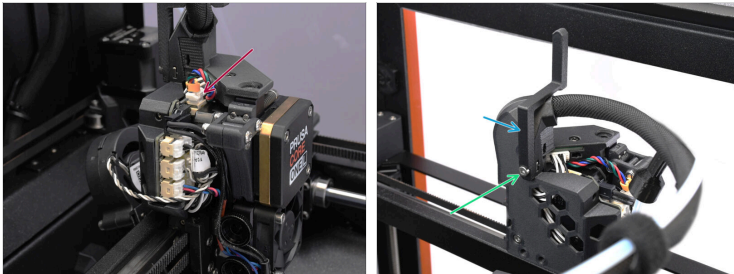
-  Pull up the fitting cover on the extruder PTFE tube.
-  Unscrew the PTFE fitting from the extruder and set the tube aside.

STEP 8 Left Cover Removal



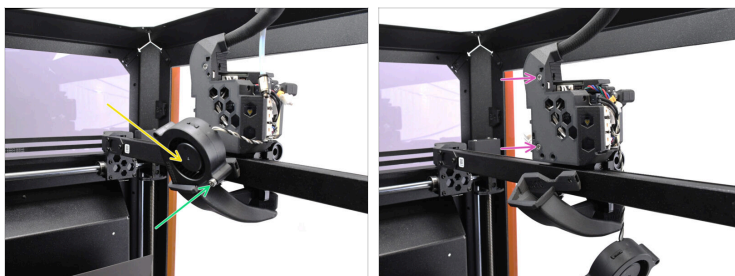
- Using the 2.5mm Allen key, remove the M3x10 screw on top of the Printhead-cover-left (cover).
- Unhook the cover from the bottom and remove it.

STEP 9 Print Head Preparation



- On top of the print head, disconnect the E-motor cable from the Loveboard.
 - ⚠ Note that each connector has a safety latch that must be pressed when disconnecting the cable; failing to do so may damage the connector.
- On the back of the print head, remove the M3x10 screw holding the lever.
- Remove the lever and set it aside.

STEP 10 Print Head Preparation 2



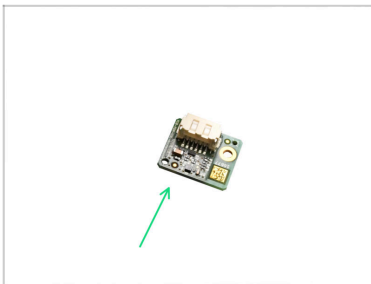
- On the back, remove the M3x20 screw holding the print fan.
- Remove the print fan.
 - ⚠ You may leave the print fan hanging by the cable temporarily, but handle it carefully to avoid damaging the connector.
- Remove the two M3x10 screws holding the rear cover. Then, remove the cover.

STEP 11 Accelerometer Removal



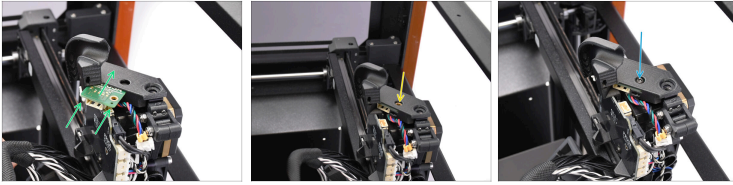
- Using the T10 key, remove the M3x10bT screw on top of the print head, holding the Accelerometer in place.
 - Gently pull by the accelerometer cable to remove its PCB from the print head.
 - Disconnect the accelerometer from the cable and set it aside.
- i** Note that each connector has a safety latch that must be pressed when disconnecting the cable; failing to do so may damage the connector.

STEP 12 Accelerometer Preparation



- **For the following steps, prepare:**
- Core One L Accelerometer (1x)

STEP 13 Accelerometer Installation



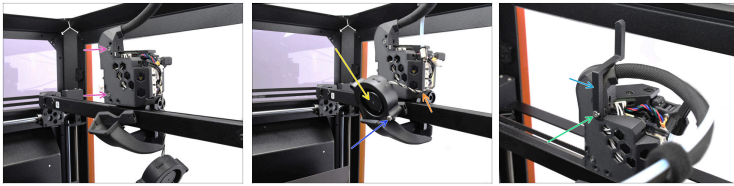
- Insert the new accelerometer PCB into the dedicated opening on the top of the print head.
- Once fully inserted, verify the screw opening aligns with the hole on top of the plastic part.
- Fix the accelerometer in place using the previously removed M3x10bT screw.

STEP 14 Cable Guidance



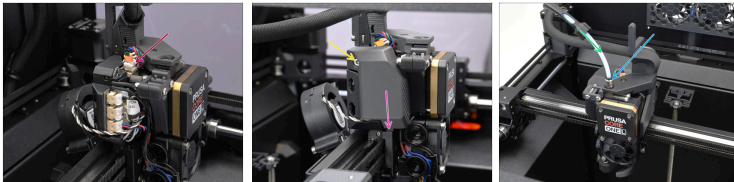
- Connect the Accelerometer cable.
- Guide the extruder main cable bundle through the groove on the back of the print head.

STEP 15 Rear Cover Installation



- ◆ Reinstall the rear cover onto the print head and fix it in place using the two M3x10 screws.
- ◆ Reinstall the print fan into the holder at the back.
- ◆ Guide the print fan cable through the groove on the side of the print head.
- ◆ Reinstall the ventilation control lever.
 - ◆ Fix it in place using the M3x10 screw.

STEP 16 Print Head Covering



- ◆ Connect the E-motor cable into the top of the LoveBoard.
- ◆ Install the side cover onto the print head. First, hook it up at the bottom.
 - ◆ Then, fix it in place using the M3x10 screw.
- ◆ Install the PTFE tube fitting to the extruder.
- ◆ Slide the cover down, to protect the fitting.


STEP 17 Top Cover Attachment







- ◆ Place the back of the cover onto the printer, with the ventilation grille facing you.
- ◆ Slide the cover backward until the rear part hooks into place.
- ◆ Once the back is secured, lower the front of the cover and gently push it down until the front latches snap into place.

STEP 18 Power Up



 Ensure the printer is placed on a stable surface where ambient vibrations, such as those from other printers, are minimized.

-  Remove the heatbed protection material.
-  Close the door.
-  On the back of the printer, plug in the mains cable.
-  Turn the power switch ON.

STEP 19 Final check



Visit the menu
**Control ->
Calibrations &
Tests**

and run the Selftest.



Follow the on-screen instructions, and once all tests pass with a green check mark, you may continue using the printer as usual.
