

# Table of Contents

## How to replace the Belt Tensioner Pulley

- (CORE One)** ..... 3
  - Step 1 - Introduction ..... 4
  - Step 2 - Tools necessary for this guide ..... 5
  - Step 3 - Printer Preparation ..... 5
  - Step 4 - Tensioner Pulley Info ..... 6
  - Step 5 - Tensioner Pulley Removal ..... 6
  - Step 6 - Pulley Assembly Disassembly ..... 7
  - Step 7 - Belt-Tensioner-Pulley Preparation  
..... 7
  - Step 8 - Tensioner Preparation ..... 8
  - Step 9 - Pulley Assembly ..... 9
  - Step 10 - Tensioning Bolt Lubrication ..... 10
  - Step 11 - Tensioner Installation ..... 11
  - Step 12 - Belt Tensioning ..... 11
  - Step 13 - Finish ..... 12



# How to replace the Belt Tensioner Pulley (CORE One)



[help.prusa3d.com/g948766](https://help.prusa3d.com/g948766)

Scan the QR code to  
display the latest  
version of this  
chapter.

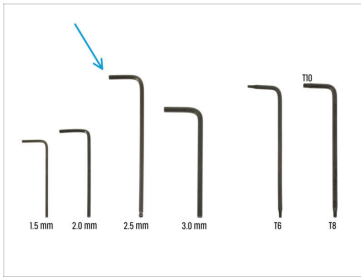


## STEP 1 Introduction



- ◆ This guide will take you through the **Belt-tensioner-pulley** assembly replacement on your Prusa **CORE One**.
- ◆ All necessary parts are available in our eshop [prusa3d.com](https://prusa3d.com).
- 📌 Note that you have to be logged in to have access to the spare parts section.
- ⚠️ **Warning: You will be handling metal sheets in this guide. Be careful!**

## STEP 2 Tools necessary for this guide



### ◆ Please prepare tools for this guide:

- ◆ 2.5mm Allen key
- ◆ Prusa lubricant or another suitable grease (available in e-shop)

## STEP 3 Printer Preparation



- ◆ On the printer, visit the menu **Control** and trigger the **Auto Home**.
- ◆ Turn the printer off using the switch on the back.
- ◆ Disconnect the printer from power.

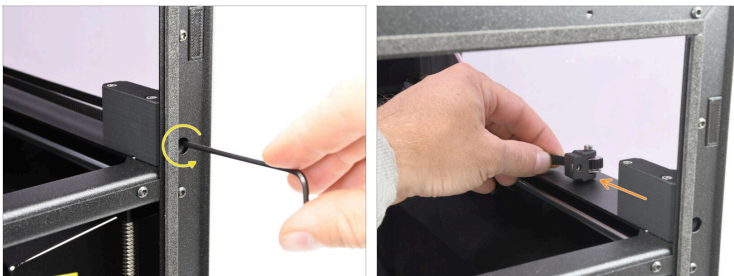
## STEP 4 Tensioner Pulley Info



- There are two belt tensioner pulleys on each side.
- i** In this guide, we demonstrate the replacement of the component on the right side of the printer, but the process is the same for the left side as well.

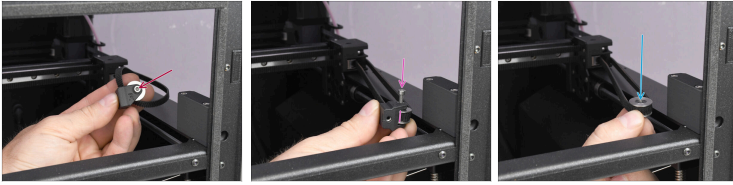
---

## STEP 5 Tensioner Pulley Removal



- Fully loosen the belt tensioning screw.
- On the inside of the printer, pull by the belt to disengage the belt-tensioner-pulley assembly.

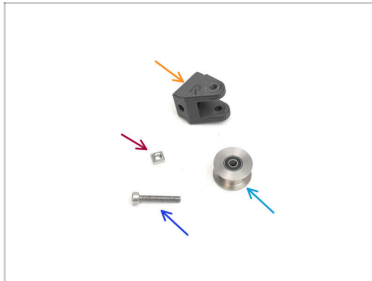
## STEP 6 Pulley Assembly Disassembly



- ◆ On the pulley assembly, remove the M3x18 screw.
- ◆ The plastic part and the GT2-20 Idler Pulley will separate.
- ◆ Remove the GT2-20 Idler Pulley from the belt.

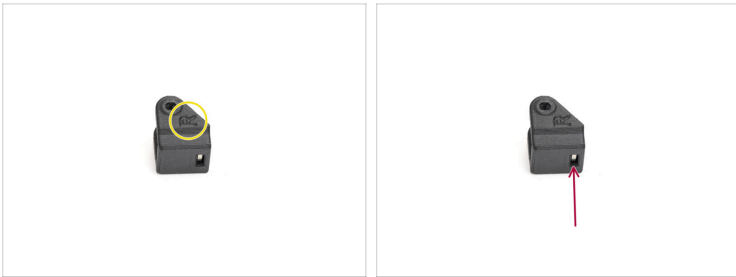
---

## STEP 7 Belt-Tensioner-Pulley Preparation



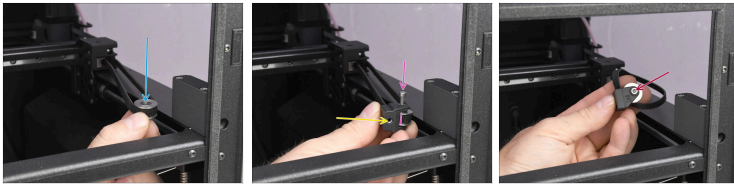
- ◆ **For the following steps, prepare:**
- ◆ Belt-tensioner-pulley plastic part (1x)
- ◆ M3nS nut (1x)
- ◆ M3x18 screw (1x)
- ◆ GT2-20 Idler Pulley (1x)

## STEP 8 Tensioner Preparation



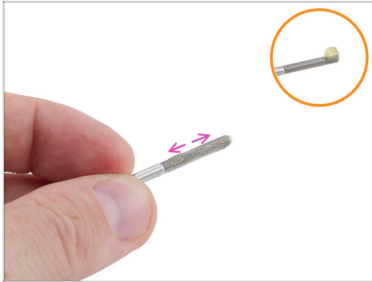
- ⬢ Note that the Belt-tensioner-pulley part has "R" and "L" markings; for use on the right side, ensure the "R" is facing up, and for the left side, the "L" should face up.
- ⬢ Insert the M3nS nut into the corresponding opening in the plastic part and push it all the way in.

## STEP 9 Pulley Assembly



- ◆ Hook the Idler Pulley by the belt on the inside of the printer.
  - ⚠ **Make sure the belt is straight and not twisted!**
- ◆ Attach the Belt-tensioner-pulley plastic part onto the pulley itself.
  - ⚠ **Make sure the part with the nut is pointing towards the center of the printer!!**
- ◆ Align both parts and fix them together using the M3x18 screw.
  - ◆ Tighten the screw.
  - ⓘ There should be either the "R" or "L" marking visible on top, depending on the side you are working on.


## STEP 10 Tensioning Bolt Lubrication



- Before re-installing the M3x30 **belt tensioning bolt**, it should be lubricated to ensure smooth belt adjustment and to prevent the tensioner from seizing.
- Apply a small amount of Prusa lubricant to the tip of the M3x30 screw.
- Spread the lubricant evenly around the entire thread.

## STEP 11 Tensioner Installation



- ✦ Push the assembly into the belt-tensioner plastic part in the printer.
  - ✦ The opening with the nut on the pulley assembly must align with the tensioning bolt.
  - ✦ Tighten the M3x30 tensioning bolt to fix the assembly in place.
-  Do not tighten the screw fully yet.

## STEP 12 Belt Tensioning



- ✦ Connect the printer to power.
- ✦ Turn the printer on using the switch on the back.
- ✦ Visit the [Adjusting belt tension](#) article and tighten both the belts to the correct tension.

## STEP 13 Finish



- ◆ To finish the repair, we recommend to visit the menu ***Control -> Calibrations & Tests*** and run the Selftest.
- ◆ Congratulations. Your printer is ready for use again.



---

---

---

---

---

---

---

---

---

---



---

---

---

---

---

---

---

---

---

---



---

---

---

---

---

---

---

---

---

---



---

---

---

---

---

---

---

---

---

---