

Table of Contents

How to reverse the door orientation (CORE One L)	3
Step 1 - Introduction	5
Step 2 - Tools necessary for this chapter	6
Step 3 - Removing the door panel	6
Step 4 - Removing the hinges	7
Step 5 - Magnet holders: parts preparation	8
Step 6 - Installing the door magnets	8
Step 7 - Door hinges: parts preparation	9
Step 8 - Installing the inner hinges	9
Step 9 - Installing the outer hinges	10
Step 10 - Door panel: parts preparation	11
Step 11 - Mounting the door panel	12
Step 12 - Well done!	12

How to reverse the door orientation (CORE One L)



help.prusa3d.com/g948798

**Scan the QR code to
display the latest
version of this
chapter.**

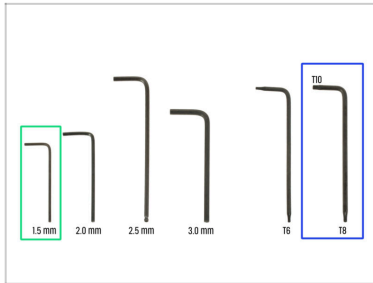


STEP 1 Introduction



- ◆ This guide will walk you through the steps to **reverse the door orientation** on the **Prusa CORE One L**.
- ⓘ By default, the door on the Prusa CORE One L is configured with the handle on the right-hand side.
- ⚠ **Be cautious when handling the parts to prevent damage to the door or printer components.**
- 📌 Keep all the fasteners and parts that you remove from the printer during the process at hand; they will be reused.

STEP 2 Tools necessary for this chapter



For this guide,
please prepare:

- 1.5mm Allen key
- T8-10 Torx key

STEP 3 Removing the door panel



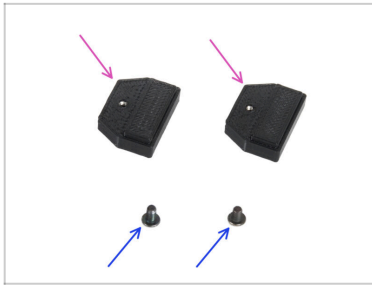
- Open the door all the way.
- Use the T10 Torx key to completely unscrew both of the M3x4rT screws and remove the Magnet-holders
- Hold the door panel in place while loosening the screws in the next step to prevent the door panel from falling down.**
- Use the T10 Torx key to remove the two M3x4rT screws securing the door panel in both hinges.
- Carefully slide the door panel out of the hinges.
- Place the door panel on a clean and secure surface to avoid any damage.

STEP 4 Removing the hinges



- i** This step will demonstrate how to remove the door hinges.
- Using the 1.5mm Allen key, push down the pin in the door hinge and remove it.
 - Make sure your hand is catching the pin at the bottom. We will need the pin later on.
 - Remove the outer door hinge from the printer.
 - Use the T8-10 Torx key to remove the M3x4rT screw.
 - Remove the inner part of the door hinge.
 - Use the same process to remove the bottom door hinge.

STEP 5 Magnet holders: parts preparation



● For the following steps, please prepare:

● Magnet-holder (2x)

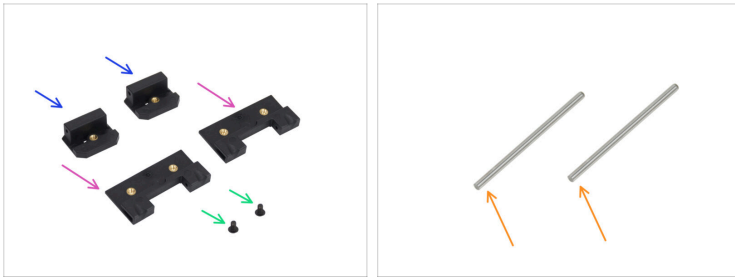
● M3x4T screw (2x)

STEP 6 Installing the door magnets







- Insert the Magnet-holder into the top rectangular hole in the printer frame from the inside.
- Ensure that the part is oriented as shown in the detail.
- Secure the Magnet-holder with the M3x4rT screw, and tighten it firmly.
- Use the same process to attach the top Magnet-holder.

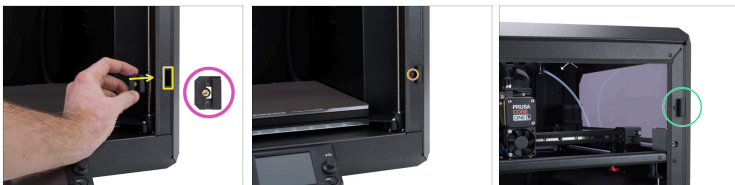
STEP 7 Door hinges: parts preparation







For the following steps, please prepare:

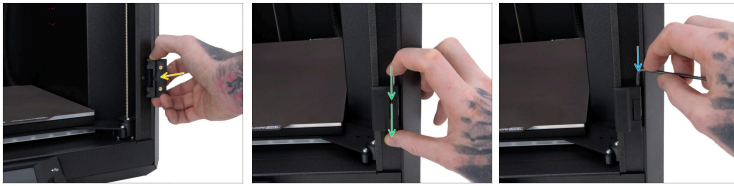
-  The outer door hinge (2x)
-  The inner door hinge (2x)
-  M3x4rT screw (2x)
-  Pin 2x40 (2x)

STEP 8 Installing the inner hinges



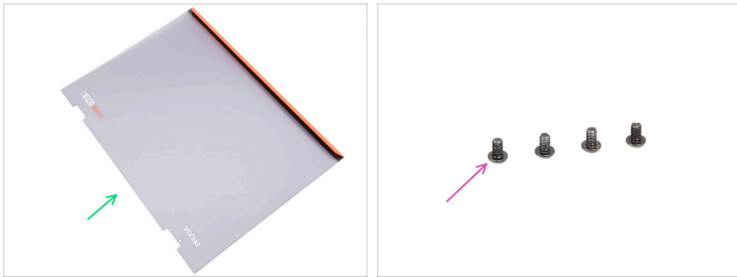
-  Insert the inner door hinge from the inside into the bottom rectangular hole in the printer frame.
-  Ensure the part is oriented as shown in the detailed illustration.
-  Secure the inner door hinge with the M3x4rT screw and tighten it firmly.
-  Use the same process for the top inner hinge.

STEP 9 Installing the outer hinges



- ◆ Attach the outer door hinge to the inner door hinge. Ensure that the hinge is oriented correctly.
- ◆ Join both parts together by carefully pushing the pin 2x40 into place.
- ⓘ It is easier to slide the pin inside when the hinge is in the closed door position.
 - ◆ Ensure the hinge parts are properly aligned with each other before inserting the pin.
 - ◆ Use the T8-10 Torx key to fully insert the pin until it is flush.
 - ◆ Use the same process to attach the top outer hinge.

STEP 10 Door panel: parts preparation



● For the following steps, please prepare:

● Door panel (1x)

⚠ Handle the door panel carefully to prevent scratching or bending.

● M3x5rT screw (4x)

STEP 11 Mounting the door panel



- ◆ Insert the door panel fully into the hinges.
 - ⓘ **Ensure the door panel is oriented correctly, with the handle facing outward.** Use the V-shaped cutouts on the inner side of the door handle as a guide.
- ◆ Insert two M3x5rT screws into each door hinge and tighten them to secure the door panel in place.
 - ⚠ **Tighten the screws gently to avoid over-tightening or damaging the door panel.**

STEP 12 Well done!



- ◆ Well done! The door orientation is successfully reversed.
- ◆ You can now resume normal use of the printer.
