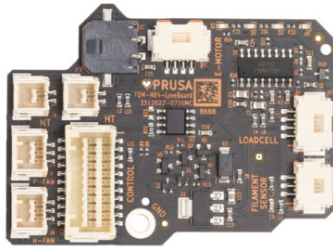


# Table of Contents

<b>How to replace Loveboard (CORE One L)</b> .....	3
Step 1 - Introduction .....	4
Step 2 - Tools Required .....	4
Step 3 - Printer Preparation .....	5
Step 4 - Printer Preparation 2 .....	5
Step 5 - Top Cover Removal .....	6
Step 6 - Heatbed Protection .....	7
Step 7 - Nextruder Cover Removal .....	7
Step 8 - Hotend Disconnecting .....	8
Step 9 - Hotend Assembly Removal .....	8
Step 10 - PTFE Disconnection .....	9
Step 11 - Cover Right Removal .....	9
Step 12 - Extruder Disconnecting .....	10
Step 13 - Extruder Removal .....	10
Step 14 - Print Head Disassembly .....	11
Step 15 - Print Head Disassembly 2 .....	11
Step 16 - Loveboard Removal .....	12
Step 17 - Loveboard Preparation .....	12
Step 18 - Loveboard Installation .....	13
Step 19 - Print Head Assembly .....	14
Step 20 - Print Head Assembly 2 .....	15
Step 21 - Extruder Installation .....	16
Step 22 - Fan Installation .....	17
Step 23 - Extruder Connection .....	17
Step 24 - Extruder Connection 2 .....	18
Step 25 - Cover Right Installation .....	18
Step 26 - LoveBoard Connection Check .....	19
Step 27 - PTFE Installation .....	19
Step 28 - Hotend Assembly Installation .....	20
Step 29 - Nozzle Check .....	21
Step 30 - Hotend Connection .....	22
Step 31 - Hotend Cables Guidance .....	22
Step 32 - Cover Left Attachment .....	23
Step 33 - Top Cover Attachment .....	24
Step 34 - Power Up .....	25

Step 35 - Final check ..... 26

# How to replace Loveboard (CORE One L)

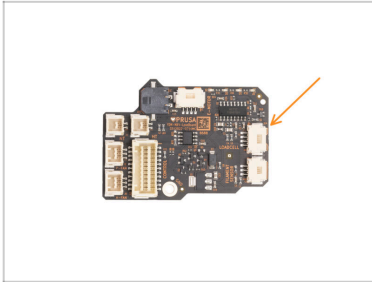


[help.prusa3d.com/g958914](https://help.prusa3d.com/g958914)

Scan the QR code to display the latest version of this chapter.



## STEP 1 Introduction

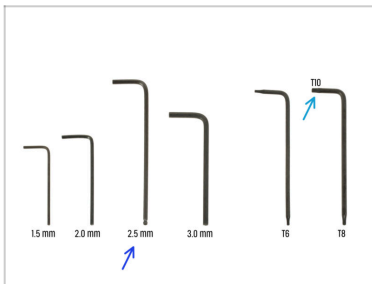


- 🟡 This guide will take you through the **Loveboard replacement** on your Prusa **CORE One L**.
- ⬛ All necessary parts are available in our eshop [prusa3d.com](https://prusa3d.com).



Note that you have to be logged in to have access to the spare parts section.

## STEP 2 Tools Required



- ⬛ **Prepare these tools for this guide:**
  - 🟡 2.5mm Allen key
  - 🟡 T10 Key / Screwdriver

## STEP 3 Printer Preparation



- 🟠 Close the door.
- 🟡 Navigate to menu **Filament** -> **Unload filament**
- 🟢 Pull out the filament.
- 🟢 Remove the filament spool from the printer.
- ⚠️ **Ensure that the printer has cooled down.**
  - ⬛ Navigate to **Preheat** -> **Cooldown** and wait for the temperatures to drop. This may take several minutes.

## STEP 4 Printer Preparation 2



- 🟡 Open the menu **Control** -> **Move Axis** -> **Move Z** and move the heatbed all the way down.
- 🟠 Wait until the heatbed moves down.
- 🟢 Turn off the printer using the switch on the back.
- 🟡 Unplug the mains cable.

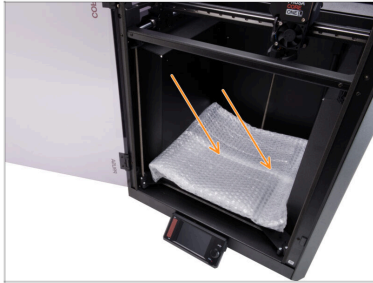
## STEP 5 Top Cover Removal




- ◆ Open the door and reach in to the bottom side of the top cover.
- ⓘ The cover is held in place by a set of plastic latches.
- ◆ Locate two of the latches at the bottom front. Squeeze them together simultaneously.
- ◆ Lift the cover to unhook it. Pull the cover to the front.
- ◆ Remove the top cover.

---

## STEP 6 Heatbed Protection



 Before proceeding, it is recommended to protect the heatbed!

- Use a piece of fabric, cardboard, bubble wrap, or another suitable material to cover the heatbed to prevent any damage.

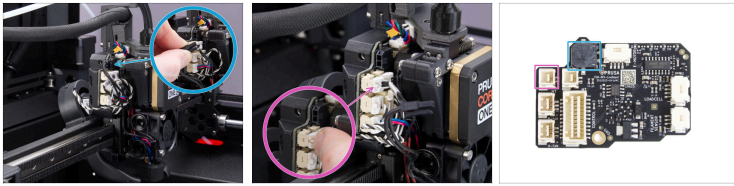
---


## STEP 7 Nextruder Cover Removal





- Adjust the printer so that you can access the Nextruder from all sides easily.
- Using the 2.5mm Allen key, remove the M3x10 screw on top of the Printhead-cover-left (cover).
- Unhook the cover from the bottom and remove it.

## STEP 8 Hotend Disconnecting







 Each connector has a safety latch; **press the latch to remove the connector**, as pulling without pressing the latch may cause a damage.

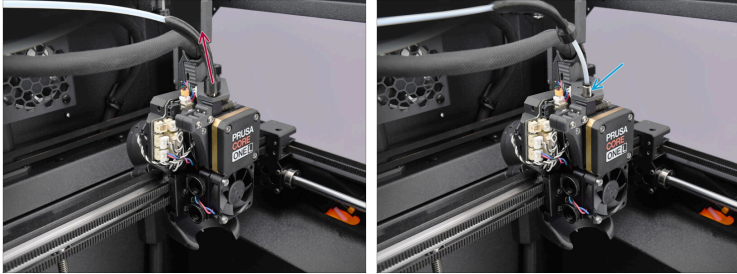
-  Disconnect the hotend heater cable.
-  Disconnect the hotend thermistor cable.

## STEP 9 Hotend Assembly Removal



-  Unhook the hotend cables from the plastic cable guide behind the two thumb screws.
-  Hold the hotend securely with your hand to prevent it from falling.
-  Using your other hand, loosen the two thumb screws by a few turns. **Do not remove them completely.**
-  Pull the hotend assembly down and out of the heatsink.

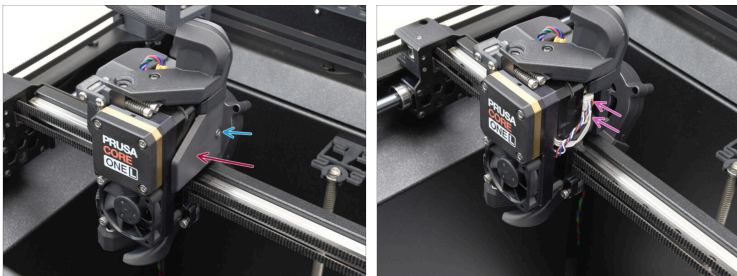
## STEP 10 PTFE Disconnection



- ◆ Pull up the fitting cover on the extruder PTFE tube.
- ◆ Unscrew the PTFE fitting from the extruder and set the tube aside.

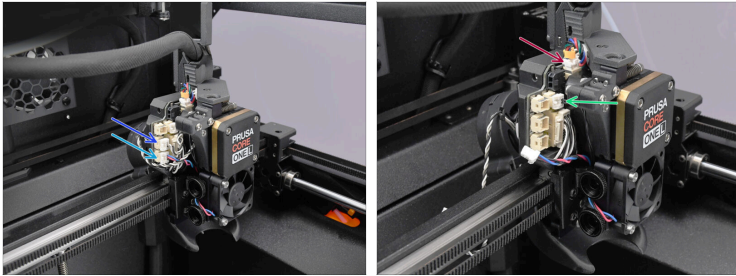
---

## STEP 11 Cover Right Removal



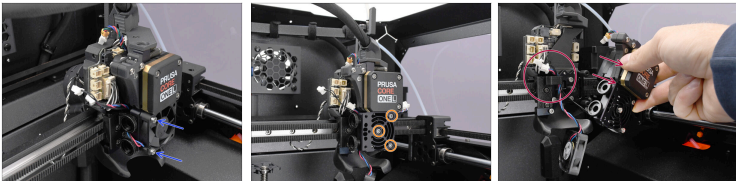
- ◆ Loosen the M3x6 screw on the right side of the Nextruder.
- ◆ Remove the extruder-side-cover-right.
- ◆ Disconnect the Loadcell and Filament Sensor cables.

## STEP 12 Extruder Disconnecting



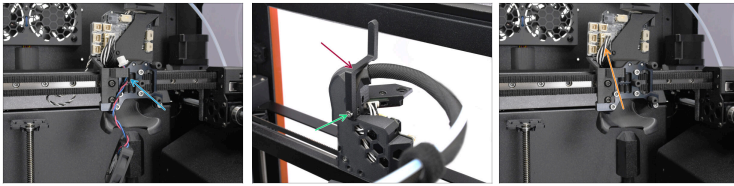
- ◆ Disconnect the print fan cable.
- ◆ Disconnect the extruder heatsink fan cable.
- ◆ Disconnect the Extruder motor cable.
- ◆ Disconnect the heatsink thermistor cable.

## STEP 13 Extruder Removal



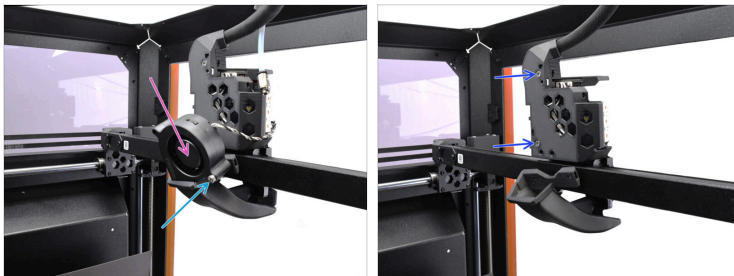
- ◆ Remove the two M3x18 screws securing the hotend heatsink fan, then remove the fan.
- ◆ Remove the three M3x10 screws securing the heatsink, then start removing the extruder **slowly and carefully**.
- ◆ Dislodge the heatsink thermistor cable from the hook behind, then remove the extruder completely.

## STEP 14 Print Head Disassembly



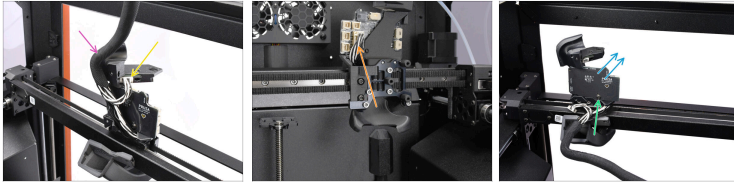
- ◆ Remove the extruder heatsink fan, whose cable should be held by the hook on the carriage.
- ◆ On the back of the print head, remove the M3x10 screw holding the lever.
- ◆ Remove the lever and set it aside.
- ◆ Disconnect the extruder main cable connector from the Loveboard.

## STEP 15 Print Head Disassembly 2



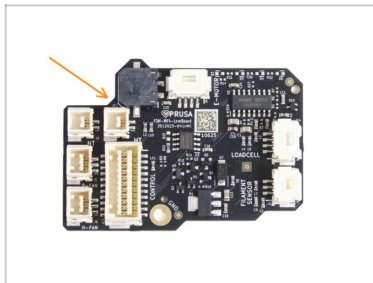
- ◆ On the back, remove the M3x20 screw holding the print fan.
- ◆ Remove the print fan.
- ◆ Remove the two M3x10 screws holding the rear cover. Then, remove the cover.

## STEP 16 Loveboard Removal



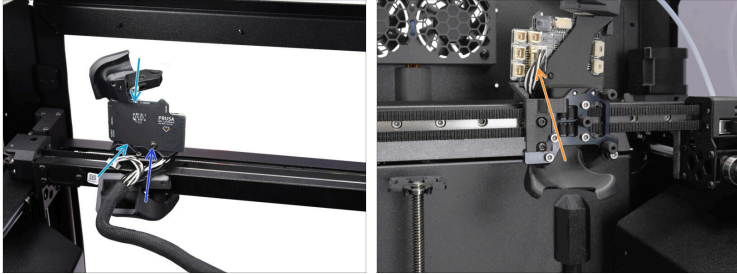
- ◆ Disconnect the Accelerometer connector.
- ◆ Remove the cable bundle from the top of the carriage.
- ◆ Disconnect the extruder main cable from the loveboard at the front.
- ◆ Using the T10 key, remove the M3x10rT screw holding the Loveboard.
- ◆ Remove the Loveboard.

## STEP 17 Loveboard Preparation



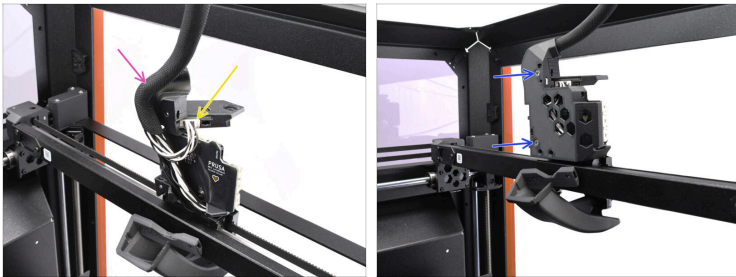
- ◆ **For the following steps, prepare:**
- ◆ LoveBoard (1x)

## STEP 18 Loveboard Installation



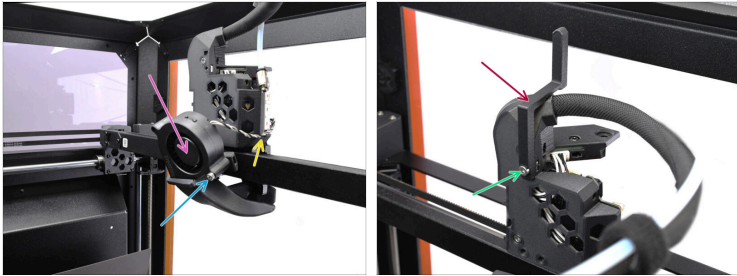
- ◆ Install the Loveboard onto the back of the extruder carriage and seat it in the dedicated area.
  - ◆ Fix it in place using the M3x10rT screw.
  - ◆ Connect the extruder main cable into the Loveboard.
- ⚠ Tidy up the cable to make sure there is no overhang on the front side of the extruder carriage, as seen in the picture. Otherwise, the other components might not fit properly.

## STEP 19 Print Head Assembly



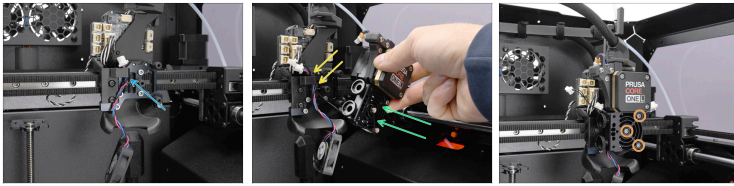
- Connect the Accelerometer cable.
  - Guide the extruder cable bundle through the dedicated channel on top of the print head.
  - Reattach the back cover onto the print head using two M3x10 screws.
- ⚠ Make sure none of the cables is getting pinched behind the cover!**

## STEP 20 Print Head Assembly 2



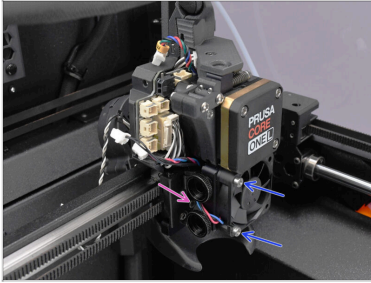
- ◆ Reinstall the vent lever onto the back of the print head.
- ◆ Fix the lever in place using the M3x10 screw.
- ◆ Reinstall the print fan back into place.
- ◆ Guide the print fan cable towards the front, through the dedicated channel.
- ◆ Fix the fan in place using the M3x20 screw.

## STEP 21 Extruder Installation



- ◆ Before installing the extruder, guide the hotend heatsink fan cable through the right side of the hook on the carriage, as pictured.
- ◆ Move the Nextruder to the inside of the printer.
  - ◆ Guide the heatsink thermistor cable by the same hook.
- ◆ Align the heatsink with the carriage and fix it in place using three M3x10 screws.
  - ⚠ **Verify none of the cables and connectors behind the extruder is getting pinched.**
  - ⚠ **Tighten the screws carefully — they thread into plastic, so stop when snug to avoid stripping or otherwise damaging the threads.**

## STEP 22 Fan Installation

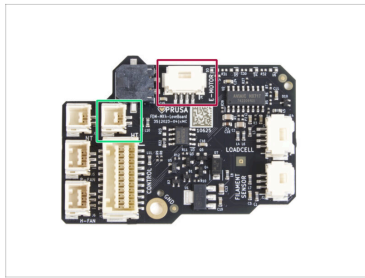
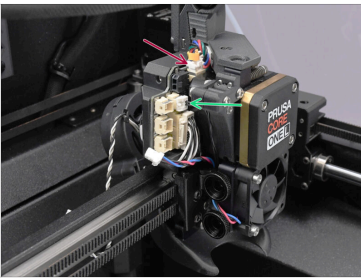


- ◆ Guide the hotend heatsink fan cable between the thumb screws.

⚠ **Make sure the fan is positioned so that the cable is guided toward its left side.**

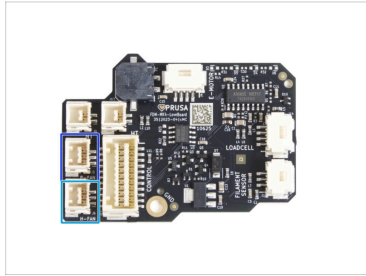
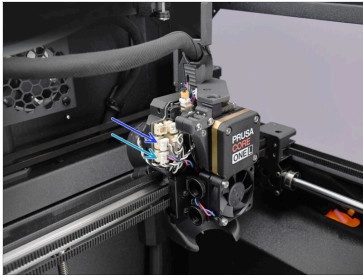
- ◆ Attach the fan to the heatsink using two M3x18 screws.

## STEP 23 Extruder Connection



- ◆ Connect the extruder motor cable into the top of the LoveBoard.
- ◆ Connect the heatsink NTC thermistor into the corresponding plug on the LoveBoard.

## STEP 24 Extruder Connection 2



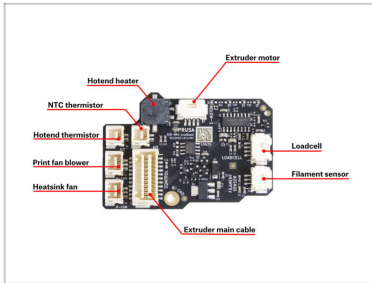
- ◆ Connect the Hotend heatsink fan into the bottom left connector on the LoveBoard.
- ◆ Guide the print fan cable from the back toward the LoveBoard and plug it into the connector directly above.

## STEP 25 Cover Right Installation



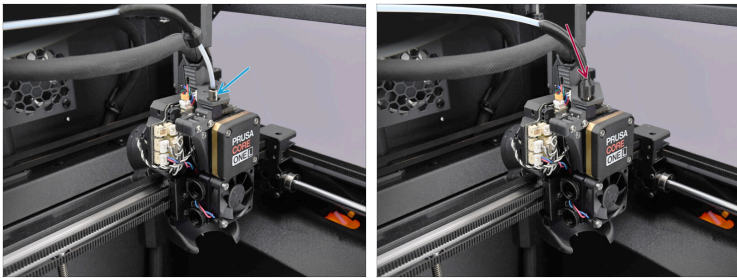
- ◆ Move to the right side of the extruder.
- ◆ Connect the Loadcell and Hall Filament Sensor cables into the right side of the LoveBoard.
- ◆ Cover the cables with the extruder-cover-right, center the cover, and secure it with one M3x6 screw.

## STEP 26 LoveBoard Connection Check



- i** Check the connections to the LoveBoard according to the diagram.

## STEP 27 PTFE Installation



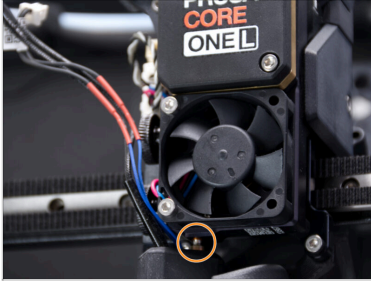
- Screw the PTFE fitting into the top of the extruder and tighten it until snug.
- Slide down the plastic cover to conceal the PTFE joint.

## STEP 28 Hotend Assembly Installation



- ◆ Locate the hole on the bottom of the heatsink and insert the hotend assembly.
- ⓘ Position the assembly to maintain a consistent gap between the fan shroud and the hotend.
- ◆ Once fully inserted, keep pushing the assembly upward and tighten both thumbscrews.
- ◆ Double-check that the hotend is fully inserted into the heatsink and properly aligned with the fan shroud.

## STEP 29 Nozzle Check

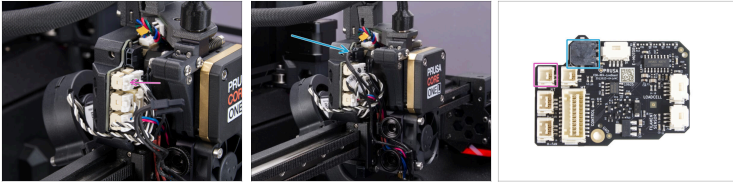


- Verify that the **nozzle is fully inserted** into the heatsink, with the copper ring on the nozzle barely visible.

**⚠** If not inserted properly, the nozzle may suffer from a poor heat transfer potentially leading to clogs.

- i** To adjust the nozzle position, loosen the thumbscrews, push the hotend assembly upward, and then retighten the thumbscrews.

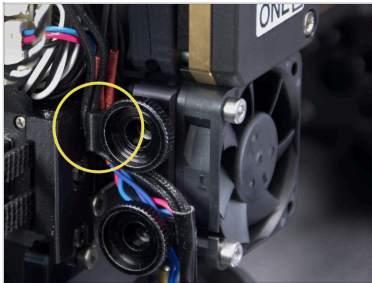
## STEP 30 Hotend Connection



- ◆ Plug the hotend thermistor cable to the top left connector on the love board.
- ◆ Plug the hotend heater to the black connector on the upper part of the love board.

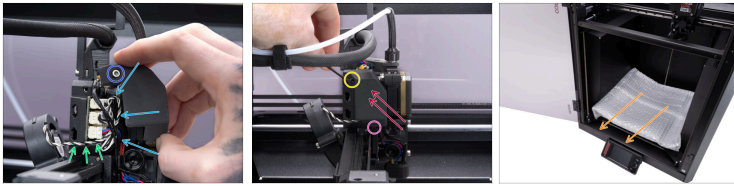
---

## STEP 31 Hotend Cables Guidance



- ◆ Guide the hotend cables between the thumb screws. Hook them behind the plastic notch on the carriage. First, hook up the thinner thermistor cables, followed by the thicker heater cables.

## STEP 32 Cover Left Attachment



- ◆ Organize the cables so they do not stick out, preventing them from being pinched when attaching the Printhead-cover-left.
- ◆ Ensure the print fan cable is routed through the ridge in the Printhead-cover-rear.
- ◆ Tip: Prepare the M3x10 screw and set it up in the cover before attaching it.
- ◆ Insert the bottom of the cover into the slot on the Printhead first.
- ◆ Press the cover towards the nextruder.
- ◆ Fix it in place using the M3x10 screw.
- ◆ Remove the protective material from the heatbed.


## STEP 33 Top Cover Attachment






- ◆ Place the back of the cover onto the printer, with the ventilation grille facing you.
- ◆ Slide the cover backward until the rear part hooks into place.
- ◆ Once the back is secured, lower the front of the cover and gently push it down until the front latches snap into place.

## STEP 34 Power Up



 Ensure the printer is placed on a stable surface where ambient vibrations, such as those from other printers, are minimized.

-  Close the door.
-  On the back of the printer, plug in the mains cable.
-  Turn the power switch ON.

## STEP 35 Final check



⚠ Visit the menu **Control -> Calibrations & Tests** and run the **Selftest**.

🟢 Follow the on-screen instructions, and once all tests pass with a green check mark, you may continue using the printer as usual.



---

---

---

---

---

---

---

---

---

---



---

---

---

---

---

---

---

---

---

---



---

---

---

---

---

---

---

---

---

---