

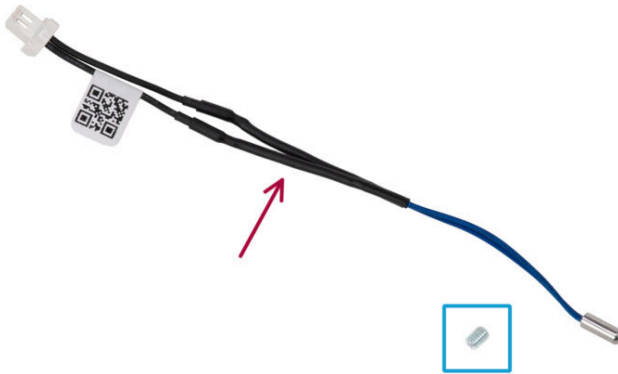
# Table of Contents

## How to replace a Hotend Thermistor (CORE

<b>One L)</b> .....	3
Step 1 - Tools necessary for this guide .....	4
Step 2 - Printer preparation (part 1) .....	4
Step 3 - Printer preparation (part 2) .....	5
Step 4 - Removing the printer top cover .....	5
Step 5 - Protecting the heatbed .....	6
Step 6 - Accessing the hotend cables .....	6
Step 7 - Disconnecting the hotend cables .....	7
Step 8 - Removing the hotend assembly .....	7
Step 9 - Silicone Sock Removal .....	8
Step 10 - Thermistor Removal .....	8
Step 11 - Thermistor Preparation .....	9
Step 12 - Thermistor Installation .....	9
Step 13 - Inserting the hotend .....	10
Step 14 - Connecting the hotend cables .....	10
Step 15 - Guiding the hotend cables .....	11
Step 16 - Attaching the Printhead-cover-left .....	11
Step 17 - Attaching the printer top cover .....	12
Step 18 - Turning the printer on .....	13
Step 19 - Final check .....	14



# How to replace a Hotend Thermistor (CORE One L)

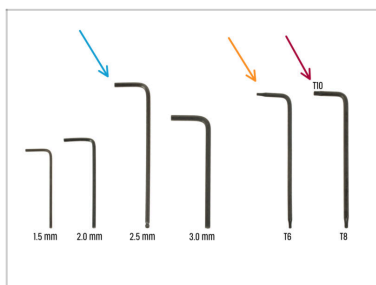


[help.prusa3d.com/g958930](https://help.prusa3d.com/g958930)

Scan the QR code to  
display the latest  
version of this  
chapter.



## STEP 1 Tools necessary for this guide



● Please prepare tools for this guide:

- 2.5mm Allen key
- T6 Key
- T10 Key / Screwdriver

## STEP 2 Printer preparation (part 1)



- Close the door.
- Navigate the screen to **Filament** -> **Unload filament**
- Unload the filament from the printer.
- Remove the filament spool from the printer.
- ⚠ **Ensure that the printer has completely cooled down.**
  - On the printer screen, navigate to **Preheat** -> **Cooldown** and wait for the temperatures to drop to ambient levels. This may take several minutes.

### STEP 3 Printer preparation (part 2)



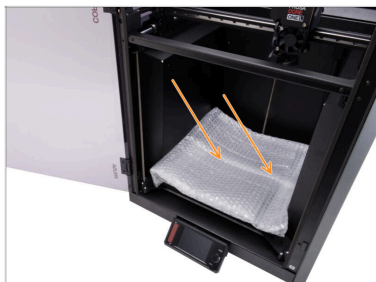
- ◆ Open the menu **Control -> Move Axis -> Move Z** and move the heatbed all the way down.
- ◆ Wait until the heatbed moves down.
- ◆ From the rear side of the printer, unplug the PSU cable.
- ◆ Flip the power switch OFF (symbol "O").

### STEP 4 Removing the printer top cover



- ◆ Open the door and reach in to the front of the top cover.
- ◆ **i** The cover is held in place by a set of plastic security latches.
- ◆ Locate two of the plastic latches at the bottom front of the cover. Squeeze them together simultaneously.
- ◆ Lift the front of the cover just enough to unhook it from the printer and pull the cover 2 cm / 0.8 inch towards you.
- ◆ Remove the top cover from the outside.

## STEP 5 Protecting the heatbed



**⚠** Before proceeding any further, it is recommended to protect the heatbed first!

- Use a piece of fabric, cardboard, bubble wrap, or any soft material to cover the heatbed. This will prevent damaging the heatbed/print sheet during the process.


## STEP 6 Accessing the hotend cables





- Adjust the printer so you have access to the left side of the Nextruder.
- Using the 2.5mm Allen key, remove the M3x10 screw on the top of the Printhead-cover-left (cover).
- Unhook the cover from the bottom slot and remove the cover.

## STEP 7 Disconnecting the hotend cables







 Each connector has a safety latch. **It is necessary to press the latch before disconnecting.** Otherwise, the connector may get damaged.

-  Press the safety latch to disconnect the hotend heater cable.
-  Press the safety latch to disconnect the hotend thermistor cable.

## STEP 8 Removing the hotend assembly



-  Unhook the hotend cables from the plastic cable guide behind the two thumb screws.
-  Hold the hotend with your hand to prevent it from falling down.
-  Use your other hand to loosen the two thumb screws with a few turns. **Do not remove them completely.**
-  Pull the hotend assembly down from the heatsink.

## STEP 9 Silicone Sock Removal



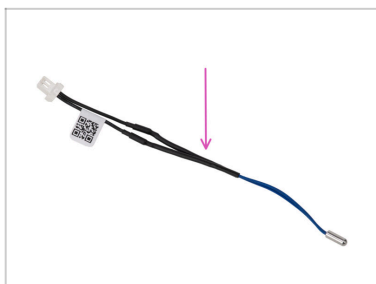
- Remove the Silicone sock, if you are using one.

## STEP 10 Thermistor Removal



- Using the TX6 Torx key loose the screw. **Do not remove the screw**, a few turns are enough!
- i** If the thermistor cannot be pulled out, loosen the screw more.
- Remove the thermistor from the heaterblock.

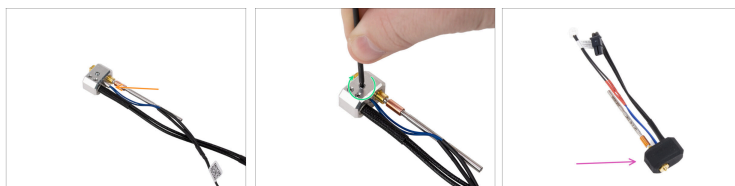
## STEP 11 Thermistor Preparation



● For the following steps, prepare:

● New hotend thermistor (1x)

## STEP 12 Thermistor Installation



- Insert the new hotend thermistor all the way into the hole in the middle of the heaterblock.
- Using the longer side of the TX6 key, tighten the thermistor.
- ⚠ Use a reasonable force to prevent damaging the thermistor.
- Reinstall the silicone sock, if you are using one.

## STEP 13 Inserting the hotend



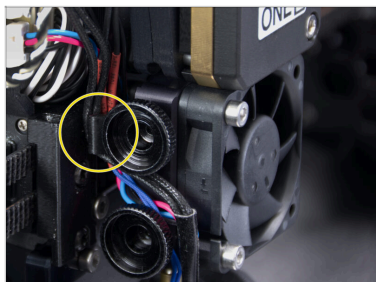
- ◆ Locate the hole on the bottom of the extruder heatsink and insert the hotend assembly.
- ⓘ Ensure that there is enough free space between the new hotend assembly and the fan shroud.
- ◆ Tighten both thumbscrews once the hotend assembly is completely inserted in the nextruder.
- ◆ Double-check that the hotend is fully inserted into the heatsink. It has to align with the fan shroud.

## STEP 14 Connecting the hotend cables



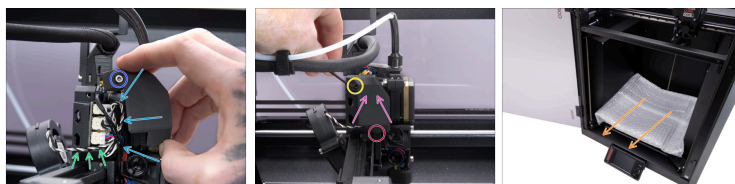
- ◆ Connect the hotend thermistor cable to the top left slot on the love board.
- ◆ Connect the hotend heater to the black slot on the upper part of the love board.

## STEP 15 Guiding the hotend cables



- Insert the hotend cables behind the plastic cable guide hook. Guide the thermistor cable first, then the hotend heater cable.

## STEP 16 Attaching the Printhead-cover-left



- Organize the cables to ensure they are not sticking out to prevent pinching them once you attach the Printhead-cover-left (cover).
- Ensure that the print fan cable is led through the ridge in the Printhead-cover-rear.
- Tip: Prepare the M3x10 screw and set it up in the cover before attaching the cover.
- Insert the cover into the bottom slot in the Printhead-cover-rear first.
- Place the cover on the Nextruder.
- Fix the cover in place using the M3x10 screw.
- Remove the protective material from the heatbed.


## STEP 17 Attaching the printer top cover






- Place the cover on the printer with the ventilation grille in the front and slide the cover towards the back.
- Align the cover so that the two plastic latches at the rear of the cover slide in and lock the cover in place.
- Once the back is secured in place, lower the front of the cover and gently push the cover down, so the front latches will snap in place.

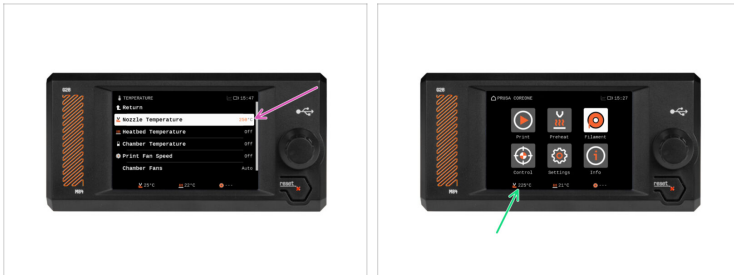
## STEP 18 Turning the printer on



 Make sure that the printer is placed in a stable place where no ambient vibrations are transmitted (for example, where other printers are printing).

-  Close the door.
-  From the rear side of the printer, plug in the PSU cable.
-  Turn the power switch ON (symbol "I").

## STEP 19 Final check



- ◆ To verify the correct connection of the cables, navigate the screen to **Control -> Temperature -> Nozzle Temperature** and set it to above 200°C.
- ◆ Return to the main screen and check the bottom bar to ensure the temperature is rising as expected.



**Great job!**



---

---

---

---

---

---

---

---

---

---



---

---

---

---

---

---

---

---

---

---



---

---

---

---

---

---

---

---

---

---