

Table of Contents

Troubleshooting the MINI/MINI+ assembly ...	3
Step 1 - Introduction	4
Step 2 - Adjusting M.I.N.D.A./SuperPINDA sensor height	5
Step 3 - Checking the cable bundle position	6
Step 4 - Checking the hotend PTFE tube.	7
Step 5 - More troubleshooting for MINI/MINI+	7

Troubleshooting the MINI/MINI+ assembly

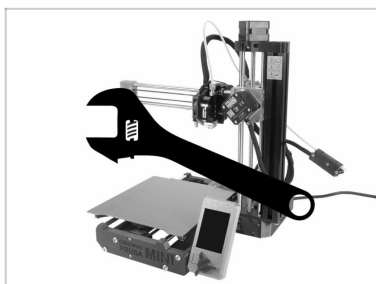


help.prusa3d.com/g7848

Scan the QR code to
display the latest
version of this
chapter.



STEP 1 Introduction



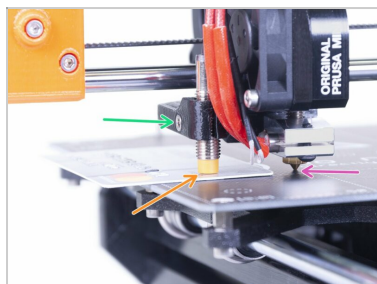
- ◆ This guide will take you through the most common hardware issues with your **Original Prusa MINI and MINI+**.

ⓘ Some parts might slightly differ. However, it does not affect the procedure.

⚠ Before you start the repair process, please let the printer cool down and unplug it from the outlet!

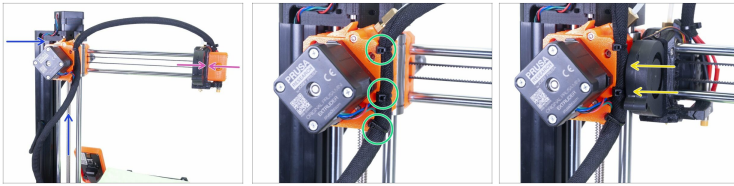
- ◆ Use the following links to solve your issue:
 - ◆ [Adjusting the M.I.N.D.A./SuperPINDA sensor](#)
 - ◆ [Adjusting the cable bundle length](#)
 - ◆ [Adjusting the hotend PTFE tube](#)

STEP 2 Adjusting M.I.N.D.A./SuperPINDA sensor height



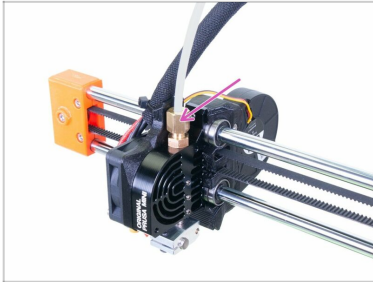
- i** The M.I.N.D.A./SuperPINDA sensor height is set during the production. You can check its proper position by following this step.
- Correct height between nozzle's tip and the sensor is 0.8-1.0 mm.**
- Carefully lower down the entire X-axis by rotating the lead screw. Until the tip of the nozzle touches the surface of the heatbed. **Avoid bending the heatbed!**
- Release the screw so you are able to adjust the sensor.
- Use your old credit card (new might be demagnetised), or the tip of the zip tie to set the correct height.
- Tighten the screw. Then carefully move the axis around 5 mm up, before you turn the printer on.
- i** In case you have an embossed card, avoid using the area with symbols, as this part is thicker.

STEP 3 Checking the cable bundle position



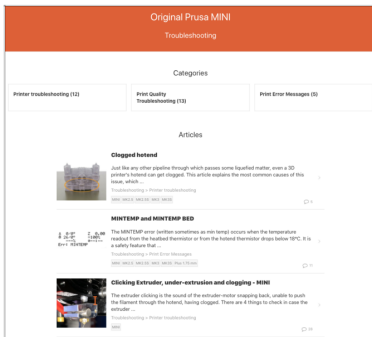
- i** In rare scenarios, it might happen that the length of the cable bundle is not distributed properly and some wires are being pulled, when the print head is in its maximum range. Let's fix that :)
- ◆** First, before you disassemble anything, let's do a final check. Rotate the lead screw until the X-axis is all the way up.
- ◆** Move the print head all the way to the right and ensure it is touching the printed part.
- ⚠** **The print head must stay in this position on its own. If not, then the entire cable bundle above the X-axis is too short.**
- ◆** To fix the cable redistribution, cut all three marked zip ties. Make an adjustment, so the print head can touch the end of the axis freely. Don't be too generous with the length of the cables above the axis, as you might overstretch the cables leading from the electronics box.
- ◆** When satisfied, reapply the zip ties and ensure the heads aren't in collision with the fan's casing.

STEP 4 Checking the hotend PTFE tube.



i The printer is clogging, prints are damaged and layers are torn. To fix this case, follow these instructions: Clogged nozzle/hotend (MINI/MINI+)

STEP 5 More troubleshooting for MINI/MINI+



◆ Haven't you found, what you were looking for? Try other articles in this section

Notes:

Notes:
