

Table of Contents

How to assemble the Prusa Face Shield -

RC2/RC3	3
Step 1 - Introduction	4
Step 2 - Preparing the face shield parts	5
Step 3 - Assembling the headband (upper part) on the shield	6
Step 4 - Assembling the chin (lower part) on the shield	7
Step 5 - Assembling the elastic band and final check	8
Step 6 - Video guide - the face shield assembly	9

How to assemble the Prusa Face Shield - RC2/RC3



help.prusa3d.com/g125495

Scan the QR code to
display the latest
version of this
chapter.





STEP 1 Introduction

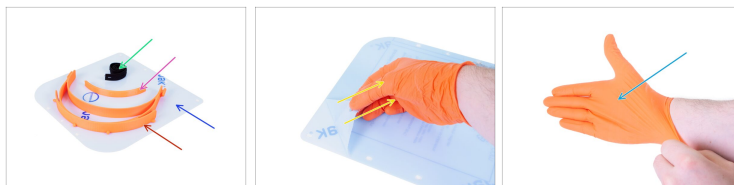


- This guide will take you through the assembly for the face shield designed by Prusa Research, which serves as personal protection. A short version can be downloaded here: [Shield Assembly PDF](#)

 **WARNING:** The design of the shield is currently being verified with the professionals!

-  Recommended for a single use. The effectivity of repeated disinfection is currently being verified.
- The printable files including the description of the changes are available at prusaprinters.org
- Starting with the version RC2, you need to carefully split the headbands from each other, break off the four supports and clean the pins, on which the plexiglass will be mounted.
- **For the community version using a laminating film as an example instead of the plexiglass please use this guide** Assembling the Prusa Face Shield RC1/RC2/RC3 - community version
-  This guide is showing assembly of the RC2/RC3 version. For the RC1 version, use this guide [How to assemble the Prusa Face Shield - RC1](#)

STEP 2 Preparing the face shield parts



⚠ WARNING: Wash your hands and your surroundings first, before you start to assemble the face shield. Use the following steps or jump to the last step for a video guide.

⬛ Please prepare the following:

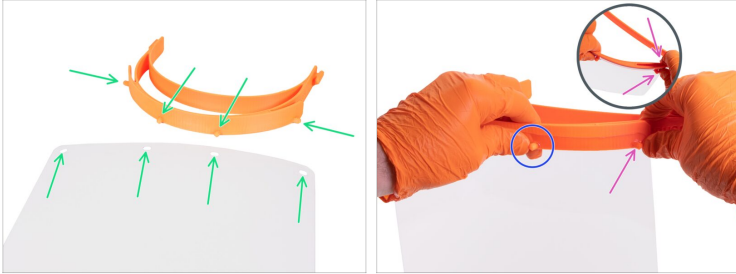
- 🟠** Upper part - headband (1x)
- 🟡** Lower part - chin (1x)
- 🟢** Buttonhole elastic band (1x)
- 🟣** Shield from plexiglass (1x)

🟠 The plexiglass is covered with a protective film from both sides, peel it off carefully. You can use a knife or your fingernail to lift the film up.

🟣 It is recommended to use gloves during the assembly.

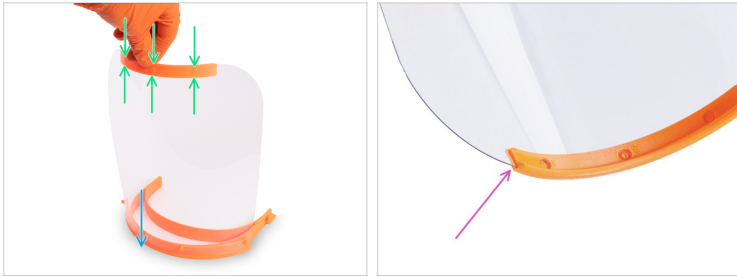
STEP 3 Assembling the headband (upper part) on the shield

How to assemble the Prusa Face Shield - RC2/RC3



- ◆ Place the plexiglass in front of you, turn the side with four holes up. Place the headband near the top edge, see the four pins (protrusions). We will use them to assemble the plexiglass, starting in the middle.
- ⚠ **The headband must be properly oriented. The pins must be on the bottom while the plexiglass is assembled. For better orientation, use the "PRUSA" sign on the sides.**
- ⓘ For easier assembly, it is recommended to push your hand through the headband.
- ◆ Mount the plexiglass on the headband using the second hole from the right. Hold it with your thumb.
- ◆ Carefully straighten the right side of the headband along the plexiglass and insert the pin. As soon as the pin is through, you can release the thumb.
- ◆ Continue on the other side of the headband, apply the same approach. Straighten the headband, avoid bending the plexiglass.

STEP 4 Assembling the chin (lower part) on the shield



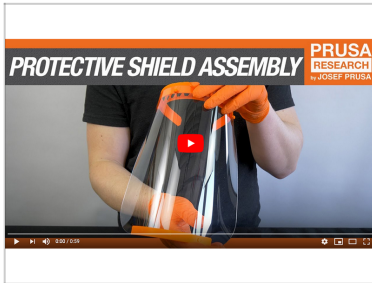
- Push the plexiglass against your body (make sure it is clean/disinfected) or other solid surface.
- Assemble the chin on the lower edge with three holes and push it gently. Both parts should "click".
- Ensure that the chin is fully seated. There should be no gap between both parts.

STEP 5 Assembling the elastic band and final check



- ◆ Take either end of the elastic band and hook it around the protrusion on the end of the headband.
- ◆ Place the other end of the elastic band on the opposite side of the headband. Adjust the length if needed.
- ◆ **The face shield is ready!!! Disinfect the shield before the use.**
- ⓘ **To disinfect the shield** you can use Prusa Face Shield disinfection
- ⓘ In case you have an idea for any improvement, please contact us using covid@prusa3d.com. Thank you ;)

STEP 6 Video guide - the face shield assembly



- ◆ Use this video guide to assemble the face shield.
- ◆ **Disinfect the shield before the use.**
- ⓘ **To disinfect the shield** you can use Prusa Face Shield disinfection
- ⓘ In case you have an idea for any improvement, please contact us using **covid@prusa3d.com**. Thank you ;)
