

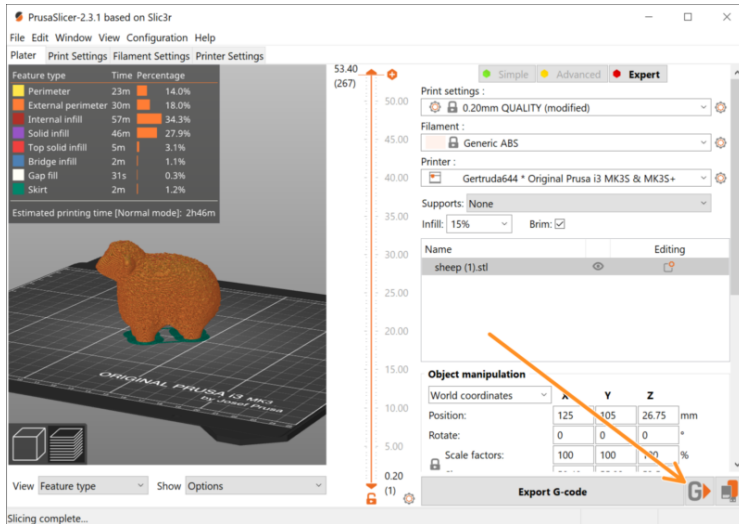
Table of Contents

Sending files from PrusaSlicer to PrusaLink ..

3

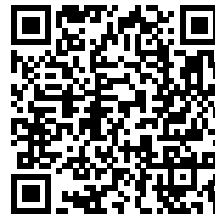
Step 1 - Credentials on the printer	4
Step 2 - Credentials in PrusaConnect	5
Step 3 - Adding a physical printer	6
Step 4 - Configuring a physical printer profile	7
Step 5 - Printing wirelessly from PrusaSlicer	8
Step 6 - Checking the print via PrusaConnect	9
Step 7 - Enjoy PrusaConnect!	9

Sending files from PrusaSlicer to PrusaLink



help.prusa3d.com/g222961

Scan the QR code to display the latest version of this chapter.

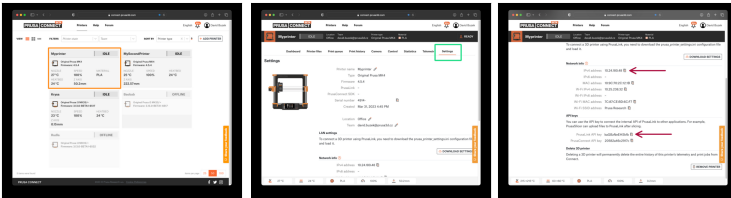


STEP 1 Credentials on the printer



- On the **MK4** or **XL** printers, the IP Address is available in the menu **Settings > Network > IPv4 Address**.
- In the menu **Settings > Network > Prusalink**, the **password** item is your PrusaLink API key.
- Note down both of these credentials, the **IP address** and the **PrusaLink API key**.
- For **MK3S+** printer, skip to the next step.
- ⓘ Note, this IP address is accessible on your local network only and might change over time according to your network setup.
- If you want to control the printer from the Internet, you can use **PrusaConnect** or **VPN** connection.

STEP 2 Credentials in PrusaConnect



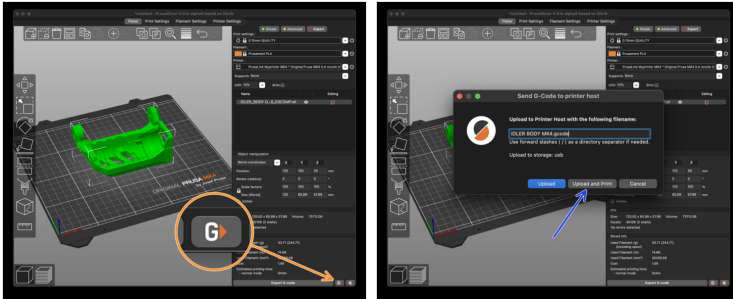
- 🟠 The credentials are also available in **PrusaConnect**. Open up the printer detail.
- 🟢 Navigate to **Settings** of your printer.
- ⬛ Note down these credentials:
 - 🟠 **IP Address**
 - 🟠 **PrusaLink API key**
- 📘 On **MK3/S/+** printer, the IP Address is also in **LCD menu > Support**. **API key** can be found in PrusaLink.

STEP 3 Adding a physical printer



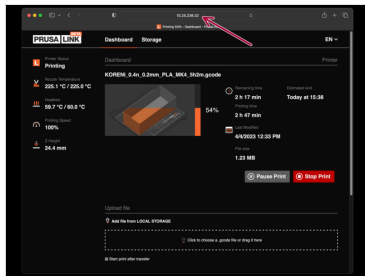
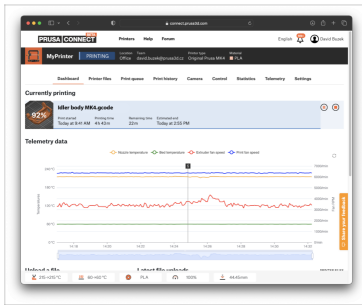
- in **PrusaSlicer**, select your printer model in the **Printer:** menu.
- in the **Printer:** menu, navigate to **Add/Remove printers > Add physical printer**
- in the Physical Printer window, assign a **name** to the printer profile.
- Verify you have selected the correct printer type.

STEP 5 Printing wirelessly from PrusaSlicer



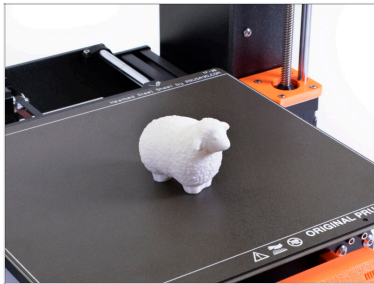
- **Slice an object** you wish to print.
- Hit the new **G>** button on the bottom right to send the G-code file to **PrusaLink** directly.
- **Name** your G-code file and select **Upload and print**. The G-code will now be uploaded directly to your printer and the printer should start printing.
- ⓘ If you want to see the progress of the upload to your printer, go to the **Window** menu and click the **Print Host Upload Queue**.
- ⚠ **If the printer is printing another file during the upload, the data transfer might be slower. Consider uploading files when the printer isn't busy.**

STEP 6 Checking the print via PrusaConnect



- Now go back to the **PrusaConnect** or **PrusaLink** to observe the print progress.

STEP 7 Enjoy PrusaConnect!



- Happy printing.
- If you want to explore more about the Prusa printer remote control services, visit the [Prusa Connect and PrusaLink explained](#) article.
