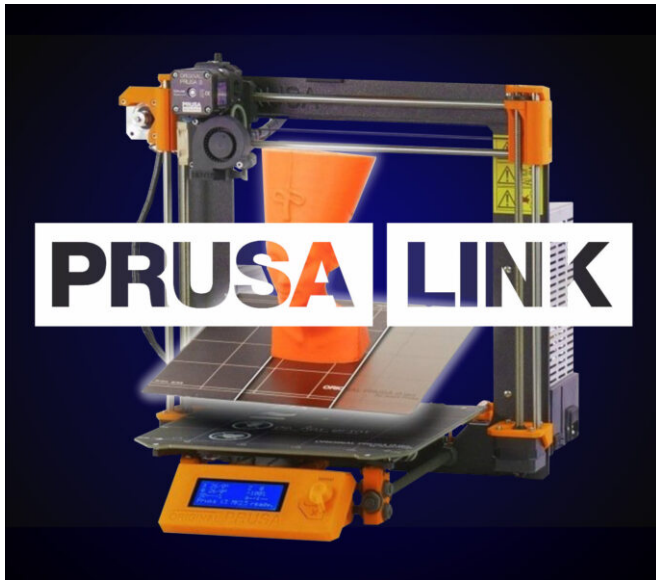


# Table of Contents

<b>PrusaLink / Prusa Connect with RPi 3/4 USB (MK2.5/S MK3/S/+)</b> .....	3
Step 1 - Introduction .....	5
Step 2 - Parts preparation: Raspberry Pi .....	6
Step 3 - RPi Imager Download .....	7
Step 4 - Preparing necessary software .....	8
Step 5 - Setting up the SD card in Pi Imager .....	9
Step 6 - Setting up the SD card in Pi Imager 2 .....	10
Step 7 - Inserting the SD card .....	11
Step 8 - Connecting the RPi to the printer .....	11
Step 9 - Powering up the Raspberry Pi .....	12
Step 10 - Setting the printer up .....	13
Step 11 - Setting the printer up .....	14
Step 12 - Prusa Connect Log in .....	15
Step 13 - Opening up PrusaLink Wizard .....	16
Step 14 - PrusaLink Wizard - Credentials .....	17
Step 15 - PrusaLink Wizard - Printer Info .....	18
Step 16 - PrusaLink Wizard - Recap .....	19
Step 17 - Adding the printer into Prusa Connect .....	20
Step 18 - Printing a file from PrusaLink .....	21
Step 19 - Printing a file from PrusaLink .....	21
Step 20 - Printing a file from Prusa Connect .....	22
Step 21 - Prusa Connect file management .....	23
Step 22 - You are set! .....	24



# PrusaLink / Prusa Connect with RPi 3/4 USB (MK2.5/S MK3/S/+)

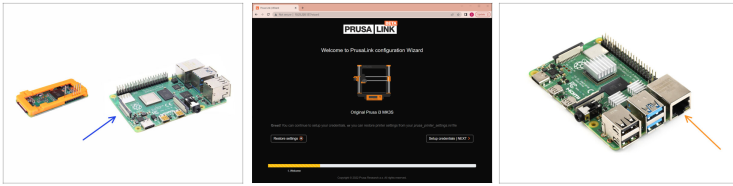


[help.prusa3d.com/g469341](http://help.prusa3d.com/g469341)

**Scan the QR code to  
display the latest  
version of this  
chapter.**



## STEP 1 Introduction



- ◆ In this guide, we will get **PrusaLink** running on the full **Raspberry Pi 3/4** board and connect it to your **MK2.5/S** or **MK3/S/+** printer using **USB**.
- ◆ If you want to use **PrusaLink** with the smaller RPi Zero connected via **GPIO**, use another printer type or just crave for more info, visit the [Prusa Connect and PrusaLink explained](#) article.
- ⓘ **PrusaLink** enables your Original Prusa MK3/S/+ printer to be connected to a 2.4Ghz Wi-Fi network and be managed remotely via **Prusa Connect**.
  - ◆ If you prefer a wired network, there is an Ethernet port you can use.
  - ◆ Make sure you are running **the latest firmware (3.10.1 and up)** on your printer.
- ⚠ **This guide is intended for experienced users.**

## STEP 2 Parts preparation: Raspberry Pi



● For the following steps, please get:

● **Raspberry Pi (RPi) model 3, 3+ or 4 board.**

● **Get RPi 4B from our e-shop.**



Make sure you are getting the original Raspberry Pi. This guide isn't covering any other fruit alternatives like Banana Pi, Orange Pi, etc.

● **Raspberry Pi case** of your choice. (you can for example print one from [Printables.com](https://www.printables.com))

● **Corresponding Raspberry Pi power supply.** (Pi model 3 uses microUSB while the model 4 uses USB-C plug)

● **MicroSD card.** (8GB or larger SDHC card, Class10, preferably a name brand one)

● **USB A to USB B cable.** (supplied with your printer)

## STEP 3 RPi Imager Download

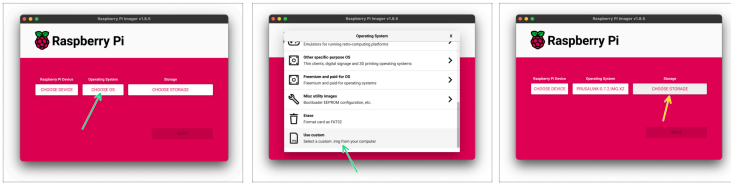


Download and install Raspberry Pi Imager from [raspberrypi.org/software](https://raspberrypi.org/software)

**i** There have been reported issues with version 2.0.0.

**📌** We recommend using version 1.8.5, which has been tested and confirmed to work. It can be downloaded here:  
<https://github.com/raspberrypi/rpi-imager/releases/tag/v1.8.5>

## STEP 4 Preparing necessary software

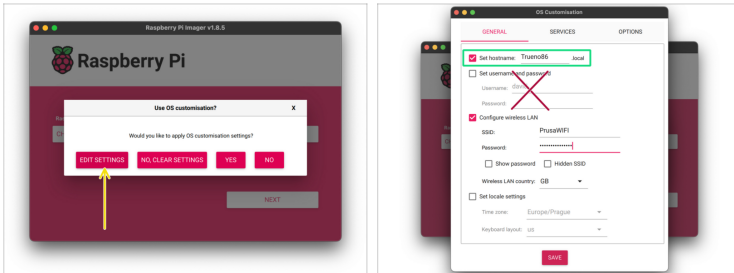


- ◆ Download the **PrusaLink SD card image**
  - ① The latest releases are always available at [Github.com/prusa3d/Prusa-Link/releases](https://github.com/prusa3d/Prusa-Link/releases)
    - 📌 Look for the Assets under the latest release. The image file has a filename such as "*prusalink-0.7.2.img.xz*".
- ◆ Insert an empty micro SD Card into your computer.
- ◆ Open the Raspberry Pi Imager. Hit the **CHOOSE OS**, navigate to **Use Custom** and select the downloaded PrusaLink SD card image file.
- ◆ Click **CHOOSE STORAGE** and select the micro SD card.
- ① Don't hit the **WRITE** button yet! We must set up the Wi-Fi and other things first :)

PrusaLink / Prusa Connect with RPi 3/4 USB (MK2.5/S  
MK3/S/+)

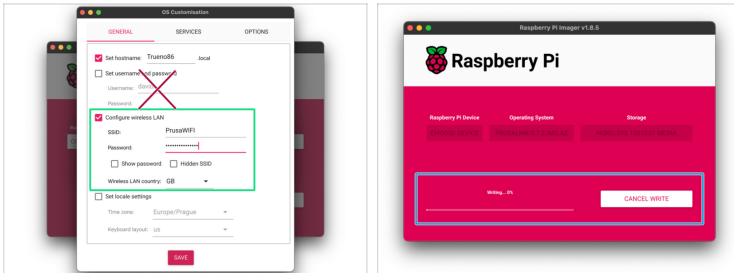
---


## STEP 5 Setting up the SD card in Pi Imager







- Choose to EDIT the OS Customisation settings.
- You can set a hostname. Preferably, use a unique hostname for the given printer, for example, **gertruda.local** - Use just plain text with **no special characters**.
- i** A hostname will allow you to access the printer more easily by typing just **http://gertruda.local** into your browser instead of the printer's IP address. If you leave the default **PrusaLink.local** hostname, there is a chance more printers are using the same hostname on one network. Remember the hostname now, you won't be able to change or view it easily later. Depending on your local network settings, the hostname might not work and you might need to use the IP Address instead.
- !** There is no need to set a device username and password in this dialog! SSH is for experienced users only.

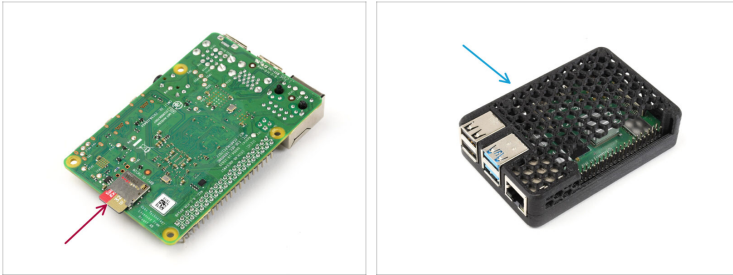
## STEP 6 Setting up the SD card in Pi Imager 2



 There is no need to set a device username and password in this dialog! SSH is for experienced users only.

-  **Configure wireless LAN (Wi-Fi)** if you plan to use the wireless network.
  -  Set the **SSID** (the name of the local Wi-Fi network you are using) and **Password**.
-  Save the settings, hit **WRITE** and confirm formatting of the micro SD card.
-  **Follow the instructions in the Pi Imager app only.** Don't follow your operating system's notifications about the microSD Card and its formatting if there are any.

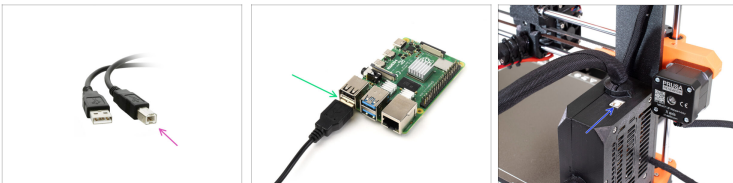
## STEP 7 Inserting the SD card



- ◆ Insert the **microSD card with PrusaLink** image into the Raspberry Pi.
- ◆ Install the Raspberry Pi into a protective cover.

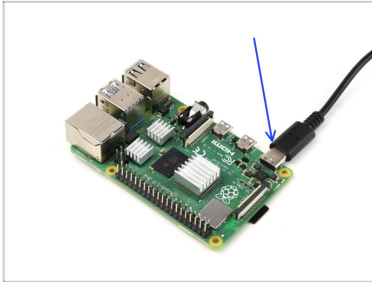
---

## STEP 8 Connecting the RPi to the printer



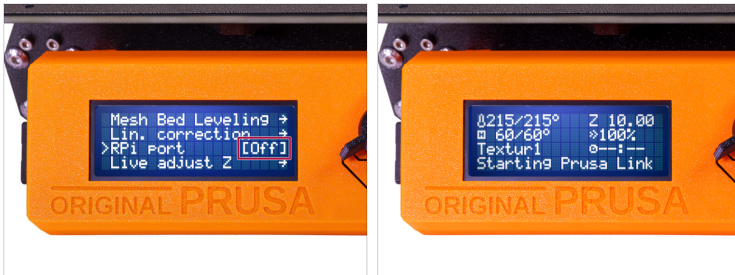
- ◆ Take the USB-A to USB-B cable.
- ◆ Connect the **USB-A** part into one of the USB ports on the Raspberry Pi.
- ◆ Connect the **USB-B** part into the top of the electronics box on the printer.

## STEP 9 Powering up the Raspberry Pi



- Turn on the printer.
- Connect the Raspberry Pi power supply.

## STEP 10 Setting the printer up



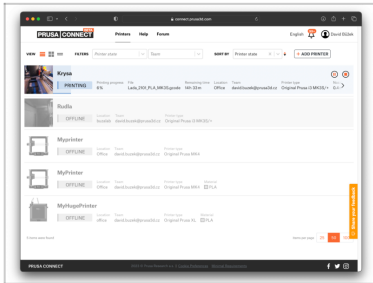
- On the printer, visit the menu > Support, scroll down to check that you have **firmware version 3.10.1 or newer**. If not, please upgrade your firmware to the latest version (3.10.1 and up)
- Go to the menu > Settings > **RPI port** and make sure it is set to **OFF**
  - ⚠ The RPI port setting must be **OFF** if you're connecting the RPi using **USB**. To use RPi Zero connected to GPIO, it must be set to **ON**.
- **Wait for a moment until the Raspberry Pi boots up.**
- You might see "**RPI Booting...**" or "**Starting Prusa Link**" messages on your LCD before PrusaLink boots up.

## STEP 11 Setting the printer up



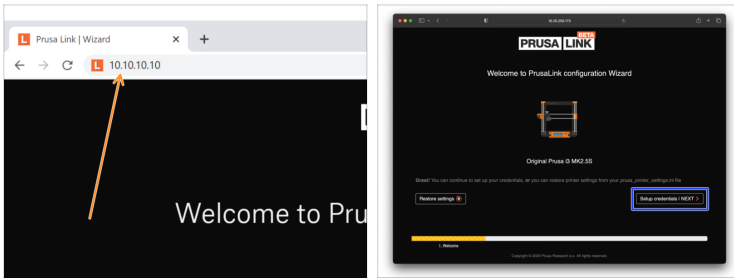
- ◆ After your PrusaLink boots up, you should see a **number** on the bottom of your LCD. This is the **IP Address** of your printer.
- ◆ From now on, the IP Address can be also found in the Support menu of your printer.
- 📌 This IP address is available on your local network only and might change over time according to your network setup.
- ⚠️ If the LCD shows **NO IP**, it means you may have poor signal or other network issues. Try moving the printer closer to the Wi-Fi access point.
- 📘 If the LCD indicates **NO LAN ACCESS** or another network error, re-visit step 9 to configure the Wi-Fi settings again.
- ◆ If you have trouble with the wireless network, you can use the wired **Ethernet connection**. PrusaLink will then prefer the wired network over the Wi-Fi.

## STEP 12 Prusa Connect Log in



- ❖ Open up your web browser. We suggest using Chrome.
- ❖ Visit the **Connect.Prusa3D.com** site.
- ❖ Log in with your **PrusaAccount**

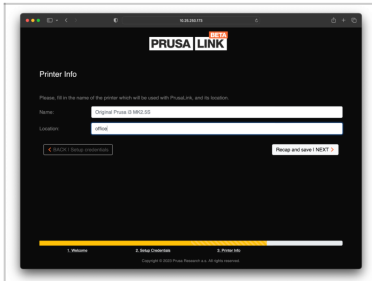
## STEP 13 Opening up PrusaLink Wizard



- 🟡 Write down the **IP Address** from your printer's LCD into the address field of your web browser.
- ⓘ Use just the four numbers separated by dots. In case you have set up a hostname earlier, you might be able to access the printer as *http://yourhostname.local* (if the local network allows you to.)
- 🟡 The **PrusaLink Wizard** site will open in your browser. Click **Setup credentials|NEXT**.
- ⓘ PrusaLink verifies your printer's serial number with Prusa servers. If you have trouble configuring the PrusaLink because of an issue with your printer's serial number, please contact support.

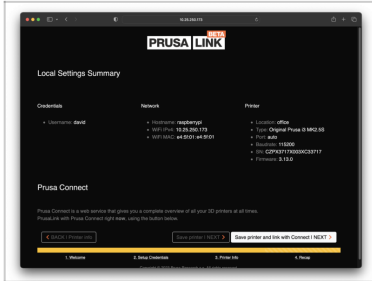


## STEP 15 PrusaLink Wizard - Printer Info





- Fill in the name of your printer.
- Name the location of your printer.
- Hit **Recap and save | NEXT**

## STEP 16 PrusaLink Wizard - Recap

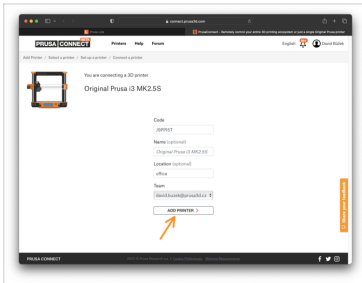


- Check the entered information.
- If everything is correct, hit **Save printer and link with Connect | NEXT**

 You will be redirected to the PrusaConnect site

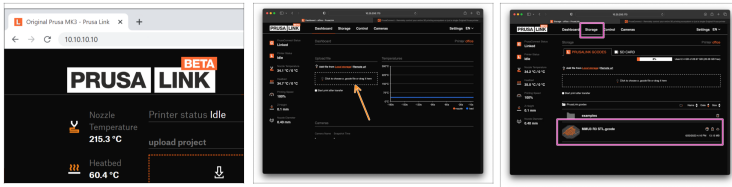
 If you plan to use PrusaLink over the local network only - without the Prusa Connect cloud service or an internet connectivity, you can select **Save printer|NEXT** instead.

## STEP 17 Adding the printer into Prusa Connect



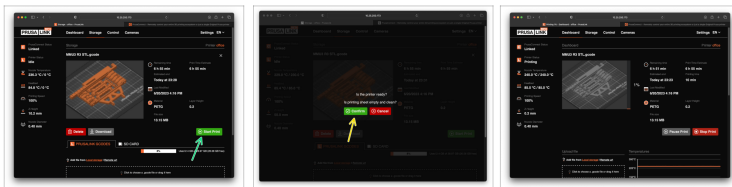
- Now you are looking at the Prusa Connect site.
- Confirm the details and hit **ADD PRINTER**
- From now on, there should be the IP address visible on the LCD of your printer on Idle - meaning PrusaLink is active and set up.

## STEP 18 Printing a file from PrusaLink



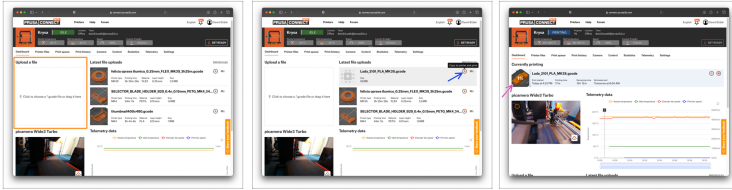
- From now on, to print a file over the local network using PrusaLink, simply open **PrusaLink** by typing the **IP address** into the web browser. Log in using the credentials you set in the Wizard.
- Log in using the credentials you have set in the Wizard.
- Select or drop in a **G-Code** file into the marked area.
- Navigate to **Storage** and open up **file details** for the just uploaded file.

## STEP 19 Printing a file from PrusaLink



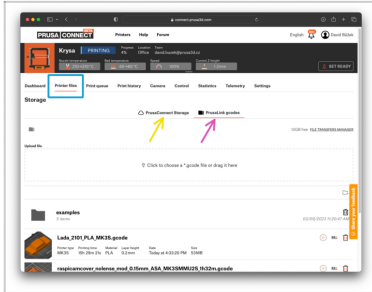
- Hit **Start Print**
- Verify in person, that the printer is ready to print and **Confirm** that the printing sheet is empty and clean.
- From now on, you can observe the print progress in PrusaLink.

## STEP 20 Printing a file from Prusa Connect



- To print a file using Prusa Connect, open up [connect.prusa3d.com](https://connect.prusa3d.com), navigate to printer details page.
- Select or drop in a **G-code** file.
- In the Latest file uploads section, select **Copy to printer and print**. Verify the printer is ready to print. Confirm the steel sheet is clean and empty. The file will be copied over from Prusa Connect cloud onto the printer (PrusaLink).
- Once the file is copied over to the printer, it will start printing.

## STEP 21 Prusa Connect file management

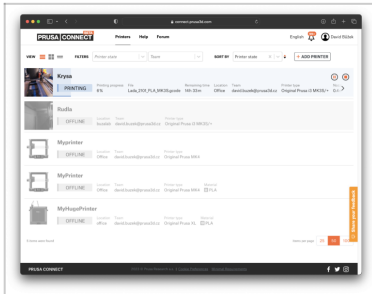


➡ If you navigate to the Printer files section for the given printer, there are two tabs:

➡ **Prusa Connect storage** shows the files stored on the cloud. These can be copied over and printed on any of the printers in Prusa Connect.

➡ **PrusaLink g-codes** shows local files on the given printer (stored on the RPi microSD card). These can be printed immediately.

## STEP 22 You are set!



- ◆ **Congratulations!  
You are all set!**
- ◆ If you plan to also use another printer type or just crave for more info, visit the Prusa Connect and PrusaLink explained article.
- ◆ Did you know you can also connect a camera to RPi or print wirelessly from PrusaSlicer ?



---

---

---

---

---

---

---

---

---

---



---

---

---

---

---

---

---

---

---

---



---

---

---

---

---

---

---

---

---

---



---

---

---

---

---

---

---

---

---

---