

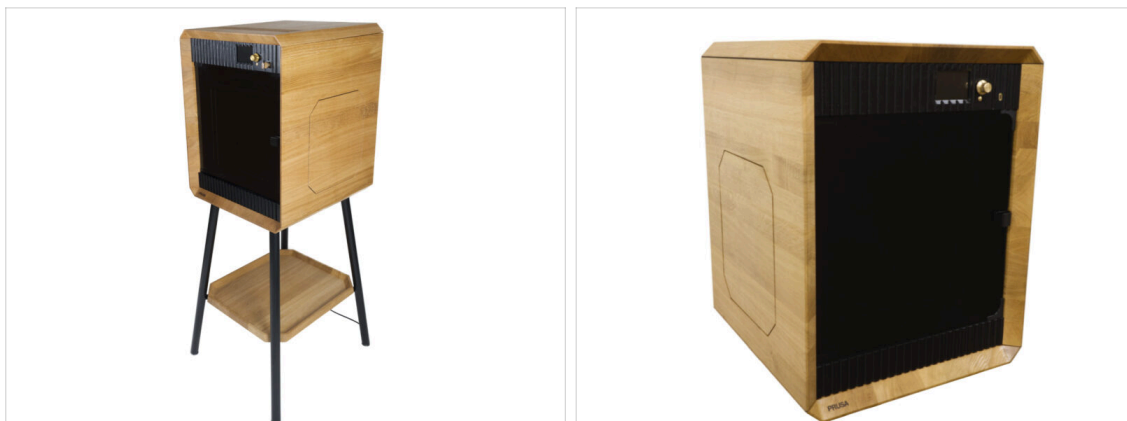
Tabla de Contenido

1. Introducción	3
Paso 1 - Introduction	4
Paso 2 - Navegando por el manual	5
Paso 3 - Ver imágenes de alta resolución	5
Paso 4 - Herramientas incluidas en el paquete	6
Paso 5 - Additional accessories	7
Paso 6 - Additional information	8
2. Desembalaje de la impresora	9
Paso 1 - Prusa Cheatsheet	10
Paso 2 - Abriendo la caja principal	10
Paso 3 - Accessing the printer	11
Paso 4 - Removing the padding	11
Paso 5 - Unpacking the printer	12
Paso 6 - Contents of the accessories box	12
Paso 7 - Attaching the tool organizers	13
Paso 8 - Removing the door tabs	13
3. First run	14
Paso 1 - Firmware update	15
Paso 2 - ENCIENDE la impresora	15
Paso 3 - Printer setup	16
Paso 4 - Network setup	16
Paso 5 - Door sensor calibration	17
Paso 6 - Handbook	17
Paso 7 - Give us feedback	18
Paso 8 - Prusa Cheatsheet	18
Paso 9 - Prusa knowledge base	19
Paso 10 - Join Printables!	19
Paso 11 - Well done!	20

1. Introducción

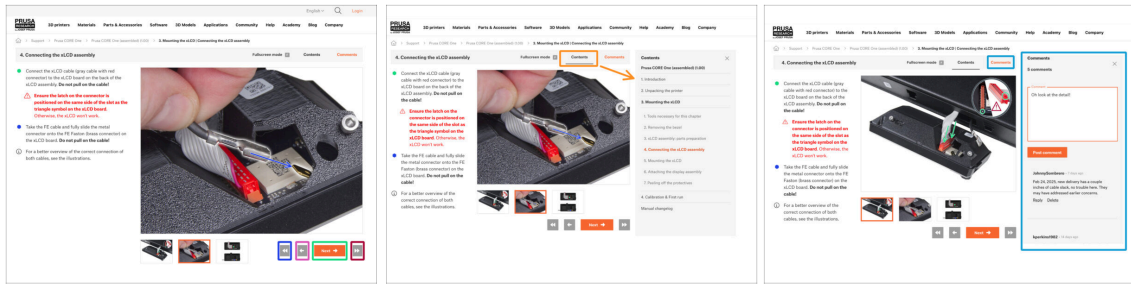


PASO 1 Introduction



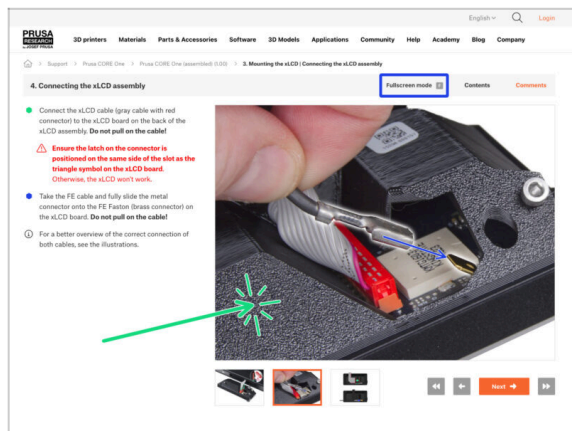
- Welcome to the guide for unboxing and setting up your **Prusa Signature Oak**. Follow these steps to ensure your printer is ready for its first print.
- ① Although the Prusa Signature Oak comes preassembled, there are a few steps that need to be taken before you can start printing.
- 📌 **We strongly recommend keeping all the packaging material in case you decide to send the printer for service.**
- This guide will show you the unpacking process of both versions of the PRUSA Signature Oak printer (with and without legs).

PASO 2 Navegando por el manual



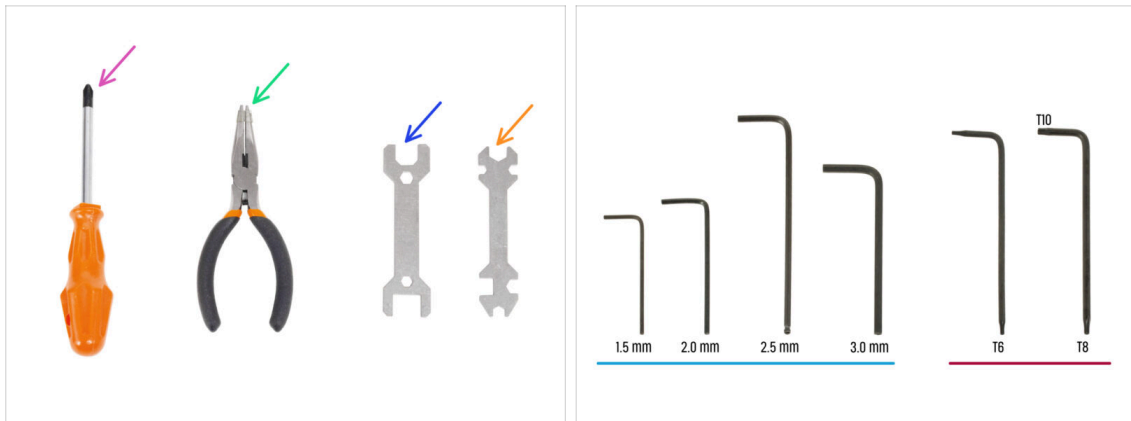
- Utiliza los botones gráficos de navegación de la esquina inferior derecha o las teclas de flecha del teclado:
 - **Botón siguiente / Tecla de flecha derecha** - Pasa a la siguiente imagen, o al siguiente paso si es la última imagen del paso.
 - **Botón de flecha izquierda / Tecla de flecha izquierda** - Se mueve a la imagen anterior, o al paso anterior si es la primera imagen del paso.
 - **Botón de reproducción hacia atrás / Flecha arriba** -Va al paso anterior.
 - **Botón de reproducción hacia adelante (Siguiente) / Tecla de flecha abajo** - Se mueve al siguiente paso.
 - Haz clic en **Contenidos** para ampliar la lista completa de pasos de esta guía. Esto te permite saltar a cualquier paso.
 - Haz clic en **Comentarios** para abrir el debate sobre un paso concreto y dejar tu opinión.

PASO 3 Ver imágenes de alta resolución



- Cuando navegas por la guía en **help.prusa3d.com**, puedes ver las imágenes originales en alta resolución para mayor claridad.
- Haz clic en la imagen para abrirla en alta resolución y verla en detalle.
- Haz clic en el modo **Pantalla completa** o pulsa la tecla F para maximizar el espacio de tu pantalla y centrarte por completo en las instrucciones.

PASO 4 Herramientas incluidas en el paquete



● Your Prusa Signature Oak package includes all the tools for printer operation and maintenance:

- Destornillador Philips (PH2) (1x)
- Needle-nose pliers (1x)
- Llave tamaño 13 mm (1x)
- Universal wrench (1x)
- Set de Llaves Allen 1.5 mm - 3.0 mm
- Set de llaves Torx T6 - T10

ⓘ The tools are packed in the accessories box.

PASO 5 Additional accessories



● The Nozzle service & expansion kit bag contains:

● 4mm hex access key

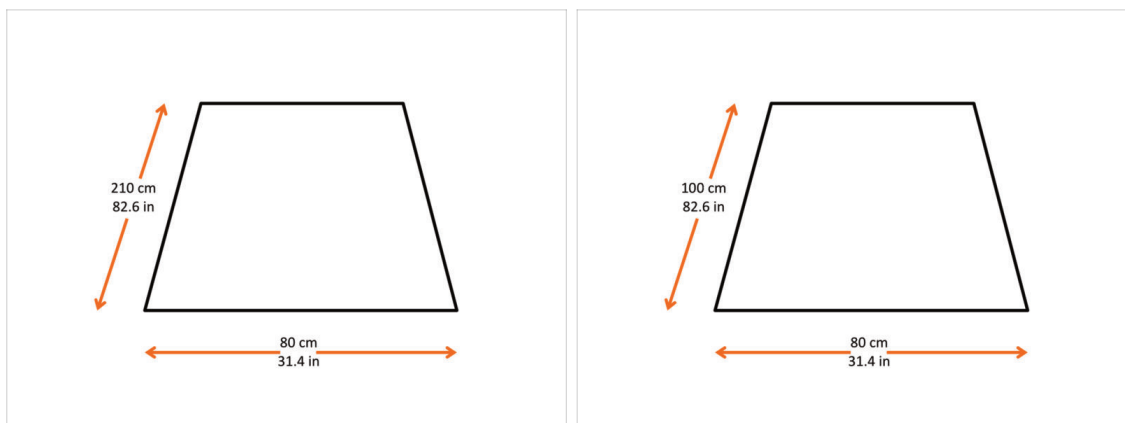
● Nozzle brush

● Nozzle cleaning tool

● Prusa nozzles (4x)

📌 The additional nozzle diameters are: 0.25 mm, 0.4 mm (hardened nozzle), 0.6 mm, and 0.8 mm

ⓘ The Nozzle service & expansion kit is packed in the accessories box.

PASO 6 Additional information

⚠ CAUTION: The package is bulky and heavy - handle with care and never try to move the box by yourself!

● Asegúrate de que dispones de espacio suficiente para establecer la impresora. **Un espacio limpio es esencial.**

① A minimum of 210 x 80 centimeters (82.6 x 31.4 inches) is recommended for the **printer with legs**.

① A minimum of 100 x 80 centimeters (39.4 x 31.4 inches) is recommended for the **printer without legs**.

2. Desembalaje de la impresora



PASO 1 Prusa Cheatsheet

- Our cheatsheet will help you every time you are not sure if you are using the correct tool type or size. Place the fastener on the corresponding print to compare its type and size.
- 📌 You can download the cheatsheet on prusa.io/col-cheatsheet.
- Print the cheatsheet at a 1:1 scale. Or **check the other side of the welcome letter** you received with your CORE One L.
- ⓘ This guide does not involve screws or nuts. However, the cheatsheet will be useful for future maintenance.

PASO 2 Abriendo la caja principal



- ⓘ The unpacking process for the version with no legs is very similar. Follow this guide for both printer versions.
- ⚠ **CAUTION: The package is bulky and heavy. Never move the box on your own! Handle with care!**
- Las fijaciones del paquete y los insertos de espuma pueden variar ligeramente.
- ⓘ Cut the transport safety straps.
- Lift the lid off the box.
- Ensure that there is sufficient free space on the outside of the box, near the feet. The printer will be placed there from the box later.

PASO 3 Accessing the printer



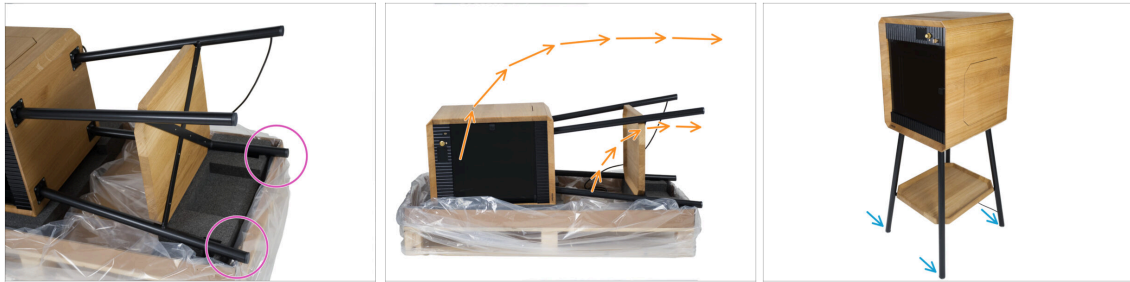
- ◆ Remove the middle section of the box.
- ⓘ The plastic film is not taped together and can be easily opened. No need for scissors or any sharp tools.
- Pull the plastic film down on all sides.
- ◆ Remove the two graphic inserts.
- Remove the wood care and repair kit.

PASO 4 Removing the padding



- ◆ Remove the bottom foam padding.
- ◆ Remove the box with accessories.
- Remove the box with the USB drive, the documentation, and all three print sheets from the top.
- ⓘ Documentation for this printer contains: Welcome letter, artbook, handbook, and regular cleaning manual.
- Remove the top foam padding.

PASO 5 Unpacking the printer



- ◆ Lift the legs up from the foam casing and move the printer so the legs are sticking out over the side of the box.
- ◆ Carefully lift the top part of the printer. **Ensure that the printer's legs touch the floor.** Proceed to tip the printer over until the printer stands on its own.
- ◆ Make sure that the printer is on a flat surface.
- ◆ The pegs at the bottom of the feet are adjustable. Turn the lower part of the peg to adjust its height.

PASO 6 Contents of the accessories box



- ◆ The accessories box contains:
 - ◆ Tools bag
 - ◆ Nozzle service & expansion kit bag
 - ◆ Side Door Organizer Inserts bag
 - ◆ Prusament box (3x)
 - ◆ Accelerometer

PASO 7 Attaching the tool organizers



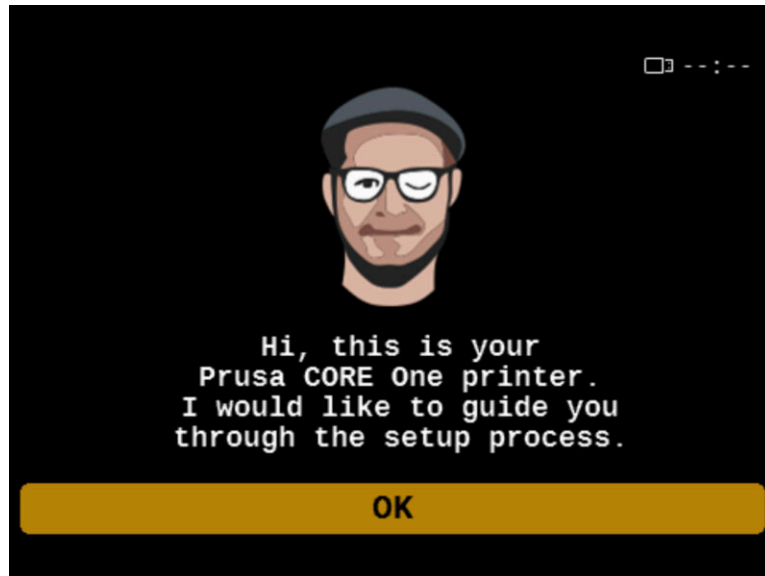
- ◆ Gently push the side door in to open it.
- ◆ Slide the additional print sheets into the two ridges in the side door panel.
- ◆ Insert the tools and accessories into each tool organizer as shown in the photo.
 - ◆ Hotend assembly (not included with the printer), needle-nose pliers, Allen keys, and nozzles.
 - ◆ Phillips screwdriver, wrench size 13 mm, and the universal wrench.
 - ◆ Nozzle brush.
- ⓘ For clarity, we are showing the tools inserted in the organizers outside of the printer.

PASO 8 Removing the door tabs

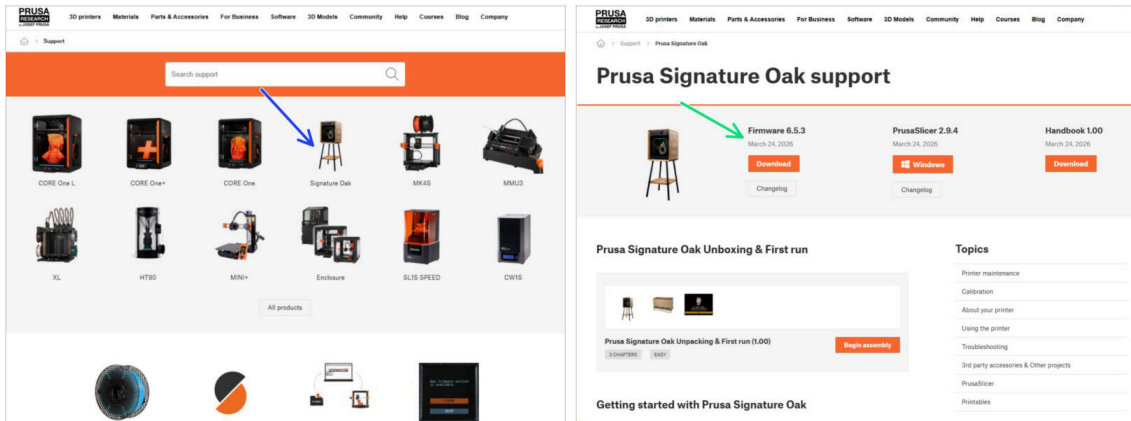


- ◆ The doors are secured with two printed tabs. Remove these before opening the door.

3. First run



PASO 1 Firmware update



- i All printers are shipped with the latest firmware. However, it is recommended to check and possibly upgrade the firmware version.
- 📍 Visita la página help.prusa3d.com.
- 🔵 Navigate to the Prusa Signature Oak page.
- 🟢 Save the firmware file (.bbf) onto the USB-C drive.
- i Pro tip: To access the Prusa Signature Oak homepage, you can use the URL: prusa.io/signature-oak

PASO 2 ENCIENDE la impresora



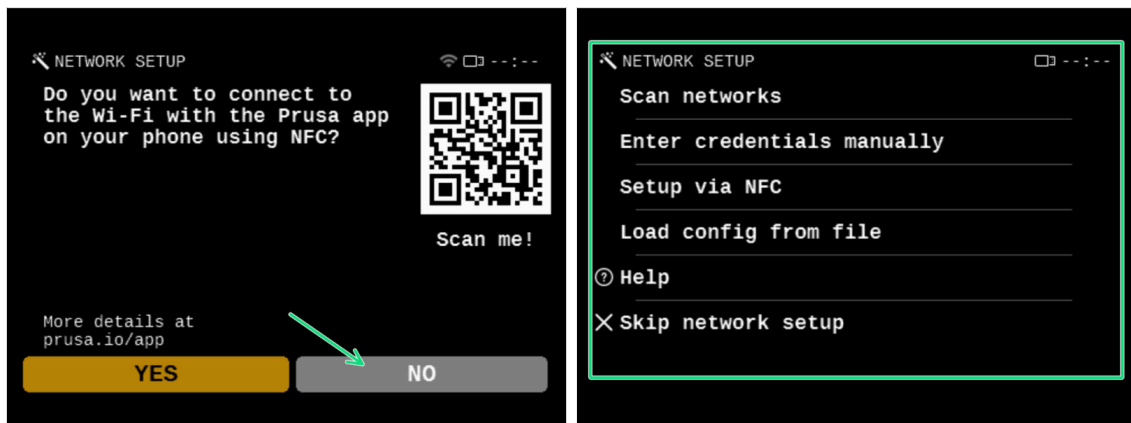
- 🟣 Inserta la unidad USB incluida en tu kit en la impresora.
- i La unidad USB incluida contiene el archivo de firmware más reciente.
- 🟡 On the back of the printer, connect the power cable and plug the printer into a wall outlet.
- 🟢 Turn the printer on (symbol "I") using the switch on the back.
- i La impresora detectará ahora si hay un nuevo archivo de firmware disponible en la unidad USB.
- 🔵 Si aparece la pantalla "Nuevo firmware disponible", pulsa **FLASH** pulsando el dial giratorio para actualizar al firmware más reciente.
- 📍 Si no aparece tal mensaje, la impresora ya está ejecutando el firmware más reciente. Continúa con el siguiente paso.

PASO 3 Printer setup



- ◆ Once the printer is on, select your language. Use the control knob or touchscreen to set your preference.
- ◆ Tras seleccionar el idioma, la impresora mostrará la pantalla de bienvenida. Pulsa **OK** para continuar con el proceso de configuración.
- ◆ The next screen will prompt you to select your printer model and other settings. All of these are pre-configured from the factory. Hit **Done** to continue.
- ⓘ The printer was configured and thoroughly tested at our facility. Once you select **Done**, the printer will only ask you if you want to set up the network and the door sensor.

PASO 4 Network setup



- ◆ La pantalla de configuración de red te pedirá que te conectes a una red Wi-Fi utilizando nuestra aplicación móvil oficial Prusa.
- ⓘ Lee más en prusa.io/app.
- ◆ Si seleccionas **No**, la impresora mostrará formas alternativas de conectarse al Wi-Fi. Este paso es opcional y puede realizarse más tarde.
- ⓘ Puedes omitir esta pantalla y configurar la conexión de red más tarde.

PASO 5 Door sensor calibration



- The printer will prompt you to enable the optional door sensor safety feature.
- ① We recommend that you enable this function. However, it is optional, and you can activate or disable it at any point.
 - When you select YES, follow the on-screen instructions to make sure that the door sensor is calibrated.
 - When you select NO, the caution screen appears, informing you of the risks of disabling the door sensor safety feature.

PASO 6 Handbook



- Lee el **Manual de impresión 3D** dedicado a tu impresora y sigue las instrucciones para configurar la impresora y prepararla para tu primera impresión.
- 📌 The latest version is always available at prusa.io/core-one-plus.
xxx **UPDATE THE LINK** xxx
- ⚠️ Lee los capítulos de **Descargo de Responsabilidad y las instrucciones de Seguridad**.

PASO 11 Well done!



- ◆ Congratulations! Your Prusa Signature Oak setup is complete.
- ◆ Happy printing!

